

Converting Colors

HunterLab(19.7464, 5.5338,
1.3166)

Have a look what the booklet for
HunterLab(19.7464, 5.5338, 1.3166)
contains.

HunterLab(19.7399, 5.5024, 1.4038)	3
<i>Conversions</i>	4
<i>Details</i>	6
<i>Harmonies</i>	12
<i>Previews</i>	24
<i>Color Blindness Simulation</i>	28
<i>CSS Examples</i>	31

Color

**HunterLab(19.7399, 5.5024,
1.4038)**

Conversions

Conversions Part 1

Format	Color
Hex	473237
RGB	71, 50, 55
RGB Percent	28%, 20%, 22%
CMY	0.7216, 0.8039, 0.7843
CMYK	0.00, 0.30, 0.23, 0.72
HSL	346°, 17%, 24%
HSV	346°, 30%, 28%
XYZ	4.4287, 3.8966, 4.1331
YIQ	56.8490, 10.9110, 6.0070

Conversions

Conversions Part 2

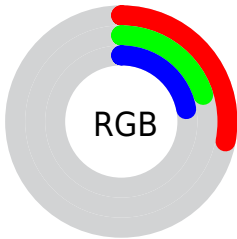
Format	Color
R_{YB}	71, 50, 55
Decimal	4665911
CIE Lab	23.33, 10.41, 0.59
CIE LCh	23, 10.425, 3.243
Yxy	3.8968, 0.3555, 0.3128
Android (android.graphics.Color)	4282855991 (0xFF473237)
YUV	56.8490, -0.9116, 12.4104
Hunter-Lab	19.7399, 5.5024, 1.4038

Details

The HunterLab color **19.7399, 5.5024, 1.4038** is a dark color, and the websafe version is hex **333333**. A complement of this color would be **23.6179, -6.9267, 1.4921**, and the grayscale version is **20.1767, -1.0766, 1.0962**.

A 20% lighter version of the original color is **36.4940, 6.2113, 2.1737**, and **6.1009, 7.1861, 0.8082** is the 20% darker color. If you saturate the color by 10%, you get **18.1301, 7.9083, 1.5926**, and if you desaturate by 10%, it is **21.4629, 3.1354, 1.3132**.

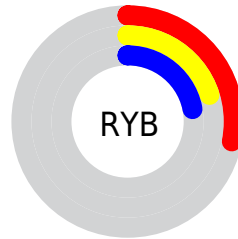
Distribution



 Red (28%)

 Green (20%)

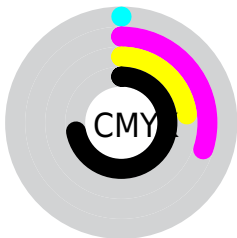
 Blue (22%)



 Red (28%)

 Yellow (20%)

 Blue (22%)

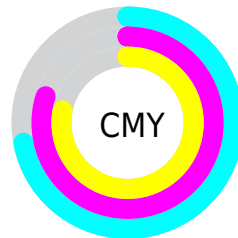


 Cyan (0%)

 Magenta (30%)

 Yellow (23%)

 Black (72%)



 Cyan (72%)

 Magenta (80%)

 Yellow (78%)

Brightness & Saturation Gradients

These gradients show how the HunterLab color 19.7399, 5.5024, 1.4038 changes by changing the brightness by 10 percent. The first figure shows a shift by +10% for each color and the second figure -10%.

Similar to the brightness gradients but the following saturation gradients show a change of the HunterLab color 19.7399, 5.5024, 1.4038 by changing the saturation by 10% instead.

■ 19.7399, 5.5024,
1.4038

■ 19.7399, 5.5024,
1.4038

■ 117.7195, 5.1104,
7.0092

■ 12.7122, 5.0994,
0.9758

■ 36.5759, 5.9366,
2.3970

■ 6.0692, 7.1489,
0.7332

■ 46.2030, 6.0121,
2.9543

0.0000, NaN, NaN

0.0000, NaN, NaN

■ 56.5519, 6.0111,
3.5485

0.0000, NaN, NaN

■ 67.5756, 5.9424,
4.1776

0.0000, NaN, NaN

■ 79.2349, 5.8130,
4.8396

0.0000, NaN, NaN

0.0000, NaN, NaN

■ 91.4969, 5.6283,

5.5331

0.0000, NaN, NaN

104.3333, 5.3929,
6.2567

■ 19.7399, 5.5024,
1.4038

■ 19.7399, 5.5024,
1.4038

■ 18.1301, 7.9083,
1.5926

■ 21.4629, 3.1354,
1.3132

■ 16.6512, 10.3258,
1.8929

■ 23.2819, 0.8224,
1.3053

■ 15.3257, 12.6996,
2.3170

■ 25.1843, -1.4342,
1.3678

■ 14.1780, 14.9413,
2.8696

■ 27.1596, -3.6366,
1.4896

■ 13.2324, 16.9271,
3.5414

■ 29.1992, -5.7899,
1.6617

■ 12.4913, 18.5664,
4.2881

■ 31.2959, -7.8997,
1.8764

■ 11.7773, 20.3731,
4.9169

■ 33.4439, -9.9721,
2.1277

■ 11.7463, 20.4579,
4.9399

■ 35.6384, -12.0127,
2.4104

■ 37.8753, -14.0267,
2.7205

Harmonies

Analogous

The Analogous color harmony consists of three colors that are next to each other on the color wheel.



19.7404, 4.7719, -1.7593



19.7399, 5.5024, 1.4038



19.7404, 4.3841, 4.0329

Triad

The Triadic color harmony groups three colors that are evenly spaced from another and form a triangle on the color wheel.



19.7404, 5.5017, 1.4042



19.7404, -4.3289, 5.3857



19.7404, -3.7600, -4.9279

Complementary

The Complementary color scheme is a pair of colors which are on the opposite of each other on the color wheel.



19.7399, 5.5024, 1.4038



23.6179, -6.9267, 1.4921

Split Complementary

Split-complementary colors differ from the complementary color scheme. The scheme consists of three colors, the original color and two neighbors of the complement color.



19.7404, -5.9612, -2.4271



19.7399, 5.5024, 1.4038



19.7404, -6.2746, 3.5420

Square

The Square scheme is like the rectangle color scheme, but the four colors are evenly spaced on the color wheel.



19.7404, 5.5017, 1.4042



19.7404, -1.4027, 6.0885



19.7404, -6.8527, 0.7391



19.7404, -0.7036, -5.7413

Rectangle

The Rectangle color scheme consists of four colors that form a rectangle on the color wheel.



19.7399, 5.5024, 1.4038



19.7404, 2.7813, 5.2277



19.7404, -6.8527, 0.7391



19.7404, -4.6178, -4.2390

Sweetspot

The Sweet Spot groups the original color and five complimentary colors.



19.7404, 5.5017, 1.4042



30.3284, 1.0024, 1.6982



19.7127, 6.3232, -5.6722



15.2370, 0.6178, 0.8569



64.8100, -3.4581, 3.5212



16.4960, -0.8802, 0.8963

Same Dimension

The Same Dimension uses a secret algorithm to generate beautiful new colors.



19.7404, 5.5017, 1.4042



24.2309, 9.2729, 1.9771



20.7996, 2.6696, 4.2609



12.3265, 0.3149, 0.6874



16.5610, 28.7512, 7.6778



40.7300, 70.4058, 21.2457

Inverse Universe

The Inverse Universe completely reimagines the original color for something new.



19.7404, 5.5017, 1.4042



24.2309, 9.2729, 1.9771



22.3617, -4.1181, -2.0987



12.3265, 0.3149, 0.6874



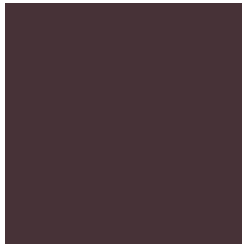
16.5610, 28.7512, 7.6778



40.7300, 70.4058, 21.2457

Previews

White Background



This preview shows how the HunterLab color 19.7399, 5.5024, 1.4038 looks on a white background.

Color Contrast Check

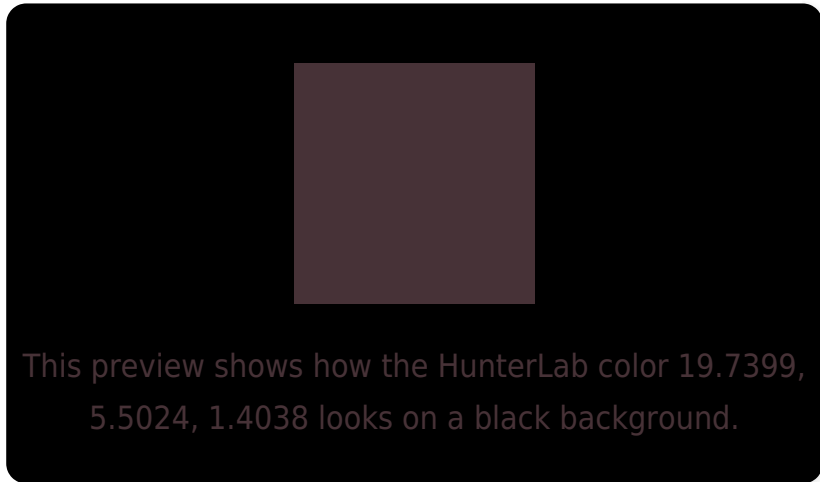
Large Text (above 18pt) WCAG AA ✓ Pass

Any Text WCAG AA ✓ Pass

Large Text (above 18pt) WCAG AAA ✓ Pass

Any Text WCAG AAA ✓ Pass

Black Background



Color Contrast Check

Large Text (above 18pt) WCAG AA × Fail

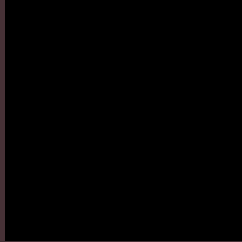
Any Text WCAG AA × Fail

Large Text (above 18pt) WCAG AAA × Fail

Any Text WCAG AAA × Fail

If you want to check with other color combinations, try the [Color Contrast Checker](#).

HunterLab 19.7399, 5.5024, 1.4038 Background



This preview shows how black text looks on a background with the HunterLab color 19.7399, 5.5024, 1.4038.

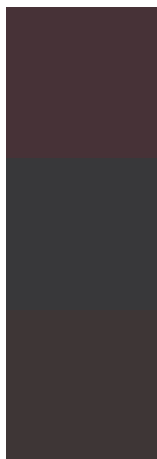


This preview shows how white text looks on a background with the HunterLab color 19.7399, 5.5024,

Color Blindness Simulation

Color vision deficiency is a very complex topic, and I could not describe the different causes any better than Wikipedia does, so if you want to learn more, you should check out their [article about color blindness](#).

Dichromacy



Original Color

19.7399, 5.5024, 1.4038

Protanopia

19.9364, -0.7868, 0.3662

Deuteranopia

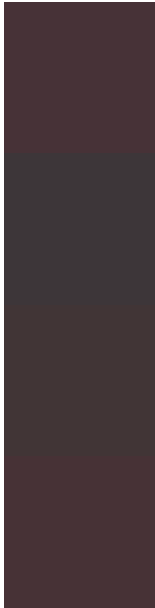
19.8212, 1.0793, 1.7931



Tritanopia

19.7158, 5.3785, 1.7477

Trichromacy



Original Color

19.7399, 5.5024, 1.4038

Protanomaly

19.8137, 1.2008, 0.6470

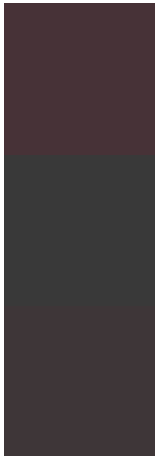
Deuteranomaly

19.8403, 2.3369, 1.8369

Tritanomaly

19.7158, 5.3785, 1.7477

Monochromacy



Original Color

19.7399, 5.5024, 1.4038

Achromatopsia

20.2275, -1.0793, 1.0990

Achromatomaly

19.8696, 1.3386, 1.1028

CSS Examples

Text

The CSS property to change the color of the text to HunterLab 19.7399, 5.5024, 1.4038 is called "color". The color property can be set on classes, ids or directly on the HTML element.

This example shows how text in the color `rgb(71, 50, 55)` looks like.

```
.text, #text, p{  
    color:rgb(71, 50, 55)  
}
```

If you want to add a text shadow in that color use the text-shadow property, you can generate a text shadow directly with our [CSS Text Shadow Generator](#).

Here you see how black text with a 4 pixel rgb(71, 50, 55) colored shadow looks like.

```
.shadow{ text-shadow: 4px 4px 2px rgb(71, 50, 55) }
```

Border

The CSS property to change the border of an element to HunterLab 19.7399, 5.5024, 1.4038 is called "border".

The border property can be set on classes, ids or directly on the HTML element.

This example shows the color as border, it can be applied via the CSS property "border" or "border-color".

```
.border, #border, table{ border:4px solid rgb(71, 50, 55) }
```


If only the border color should be changed use the property `border-color`.

```
.border{ border-color:rgb(71, 50, 55) }
```

If you want to add a box shadow in that color use:

Here you see how a box with a 4 pixel `rgb(71, 50, 55)` colored shadow looks like.

```
.boxshadow{ -moz-box-shadow:4px 4px 4px  
4px rgb(71, 50, 55); -webkit-box-  
shadow:4px 4px 4px 4px rgb(71, 50, 55);  
box-shadow:4px 4px 4px 4px rgb(71, 50, 55)  
}
```

Background

The CSS property to change the background color of an element to HunterLab 19.7399, 5.5024, 1.4038 is called "background". The background property can be set on classes, ids or directly on the HTML element.

```
.background, #background, body{  
background: rgb(71, 50, 55) }
```

If only the background color should be changed can be used:

```
.background{ background-color: rgb(71, 50,  
55) }
```

This example shows the color as background, it is applied via the CSS property "background".

To optimize and compress your CSS code, you can use our [online CSS compressor and optimizer](#) based on csstidy. If you want to create a linear or radial gradient as background or border, check our [CSS Gradient Generator](#).

Hey! You found this booklet interesting? Support Converting Colors with the new Membership Option!

The pro membership hides all ads, plus gives you double the colors in the color bucket, and more awesome pro features!

[Learn more, Memberships starting at \\$2.50/m!](#)

**Follow me
on Twitter!**

@ConvertingColor