

Converting Colors

HunterLab(19.8306, 6.5831,
5.5016)

Have a look what the booklet for
HunterLab(19.8306, 6.5831, 5.5016)
contains.

HunterLab(19.8716, 6.4992, 5.5395)	3
<i>Conversions</i>	4
<i>Details</i>	6
<i>Harmonies</i>	12
<i>Previews</i>	24
<i>Color Blindness Simulation</i>	28
<i>CSS Examples</i>	31

Color

**HunterLab(19.8716, 6.4992,
5.5395)**

Conversions

Conversions Part 1

Format	Color
Hex	4D312B
RGB	77, 49, 43
RGB Percent	30%, 19%, 17%
CMY	0.6980, 0.8078, 0.8314
CMYK	0.00, 0.36, 0.44, 0.70
HSL	11°, 28%, 24%
HSV	11°, 44%, 30%
XYZ	4.5949, 3.9488, 2.8055
YIQ	56.6880, 18.6140, 4.0700

Conversions

Conversions Part 2

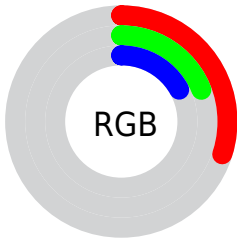
Format	Color
R_{YB}	77, 50, 43
Decimal	5058859
CIE Lab	23.50, 11.88, 9.03
CIE LCh	24, 14.924, 37.258
Yxy	3.9490, 0.4049, 0.3479
Android (android.graphics.Color)	4283248939 (0xFF4D312B)
YUV	56.6880, -6.7482, 17.8136
Hunter-Lab	19.8716, 6.4992, 5.5395

Details

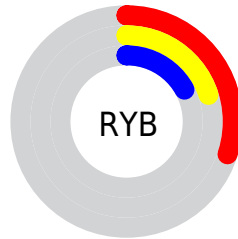
The HunterLab color **19.8716, 6.4992, 5.5395** is a dark color, and the websafe version is hex **663333**. A complement of this color would be **23.5704, -6.4959, -3.2511**, and the grayscale version is **20.1391, -1.0746, 1.0942**.

A 20% lighter version of the original color is **36.6074, 7.1571, 7.7295**, and **6.2326, 7.9882, 3.9804** is the 20% darker color. If you saturate the color by 10%, you get **18.4503, 8.5390, 6.3333**, and if you desaturate by 10%, it is **21.3991, 4.5428, 4.6836**.

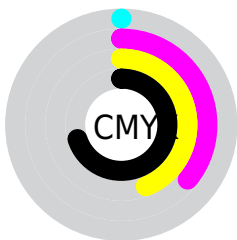
Distribution



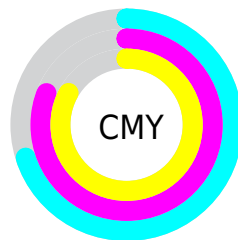
- Red (30%)
- Green (19%)
- Blue (17%)



- Red (30%)
- Yellow (20%)
- Blue (17%)



- Cyan (0%)
- Magenta (36%)
- Yellow (44%)
- Black (70%)



- Cyan (70%)
- Magenta (81%)
- Yellow (83%)

Brightness & Saturation Gradients

These gradients show how the HunterLab color 19.8716, 6.4992, 5.5395 changes by changing the brightness by 10 percent. The first figure shows a shift by +10% for each color and the second figure -10%.

Similar to the brightness gradients but the following saturation gradients show a change of the HunterLab color 19.8716, 6.4992, 5.5395 by changing the saturation by 10% instead.

■ 19.8716, 6.4992,
5.5395

■ 19.8716, 6.4992,
5.5395

■ 117.9582, 6.7492,
15.2958

■ 12.8260, 6.0001,
4.3730

■ 36.7377, 7.1050,
7.7301

■ 6.2266, 7.9800,
4.3586

■ 46.3778, 7.2583,
8.7988

0.0000, NaN, NaN

■ 56.7389, 7.3305,
9.8644

0.0000, NaN, NaN

■ 67.7740, 7.3314,
10.9329

0.0000, NaN, NaN

■ 79.4441, 7.2684,
12.0080

0.0000, NaN, NaN

■ 91.7163, 7.1473,

0.0000, NaN, NaN

104.5626, 6.9729,
14.1879

19.8716, 6.4992,
5.5395

19.8716, 6.4992,
5.5395

18.4503, 8.5390,
6.3333

21.3991, 4.5428,
4.6836

17.1492, 10.6452,
7.0416

23.0180, 2.6798,
3.7815

15.9858, 12.7780,
7.6367

24.7174, 0.9083,
2.8459

14.9777, 14.8743,
8.0871

26.4876, -0.7769,
1.8852

14.1346, 16.8168,
8.4620

28.3207, -2.3833,
0.9055

■ 13.7150, 17.8051,
8.7628

■ 30.2098, -3.9191,
-0.0891

■ 32.1494, -5.3921,
-1.0957

■ 34.1346, -6.8101,
-2.1125

■ 36.1615, -8.1797,
-3.1382

Harmonies

Analogous

The Analogous color harmony consists of three colors that are next to each other on the color wheel.



19.8721, 8.5195, 2.1178



19.8716, 6.4992, 5.5395



19.8721, 2.4832, 7.3934

Triad

The Triadic color harmony groups three colors that are evenly spaced from another and form a triangle on the color wheel.



19.8721, 6.4983, 5.5398



19.8721, -8.5942, 4.0735



19.8721, 0.0710, -9.2341

Complementary

The Complementary color scheme is a pair of colors which are on the opposite of each other on the color wheel.



19.8716, 6.4992, 5.5395



23.5704, -6.4959, -3.2511

Split Complementary

Split-complementary colors differ from the complementary color scheme. The scheme consists of three colors, the original color and two neighbors of the complement color.



19.8721, -4.3737, -8.3734



19.8716, 6.4992, 5.5395



19.8721, -9.1131, -0.0134

Square

The Square scheme is like the rectangle color scheme, but the four colors are evenly spaced on the color wheel.



19.8721, 6.4983, 5.5398



19.8721, -6.1486, 6.6913



19.8721, -7.6366, -4.7310



19.8721, 4.5954, -6.8691

Rectangle

The Rectangle color scheme consists of four colors that form a rectangle on the color wheel.



19.8716, 6.4992, 5.5395



19.8721, -0.6354, 7.7961



19.8721, -7.6366, -4.7310



19.8721, -1.4838, -9.3200

Sweetspot

The Sweet Spot groups the original color and five complimentary colors.



19.8721, 6.4983, 5.5398



32.3582, 1.0291, 3.6226



19.4030, 12.7097, -6.2091



16.4298, 0.6852, 1.9437



66.9319, -3.5713, 3.6365



18.1947, -0.9708, 0.9886

Same Dimension

The Same Dimension uses a secret algorithm to generate beautiful new colors.



19.8721, 6.4983, 5.5398



23.9041, 11.3294, 8.3251



23.6850, -0.5606, 8.8635



13.2014, -0.0153, 1.1923



18.0488, 24.7462, 11.5548



42.7701, 63.9167, 27.4737

Inverse Universe

The Inverse Universe completely reimagines the original color for something new.



23.5704, -6.4959, -3.2511



29.7398, -9.4148, -5.5982



19.2844, 0.2276, -9.6996



13.5945, -1.3732, 0.2628



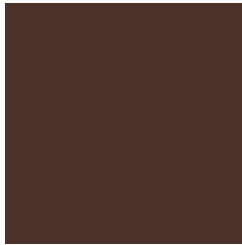
27.0167, -10.4905, -11.1226



64.8649, -24.3322, -28.5492

Previews

White Background



This preview shows how the HunterLab color 19.8716, 6.4992, 5.5395 looks on a white background.

Color Contrast Check

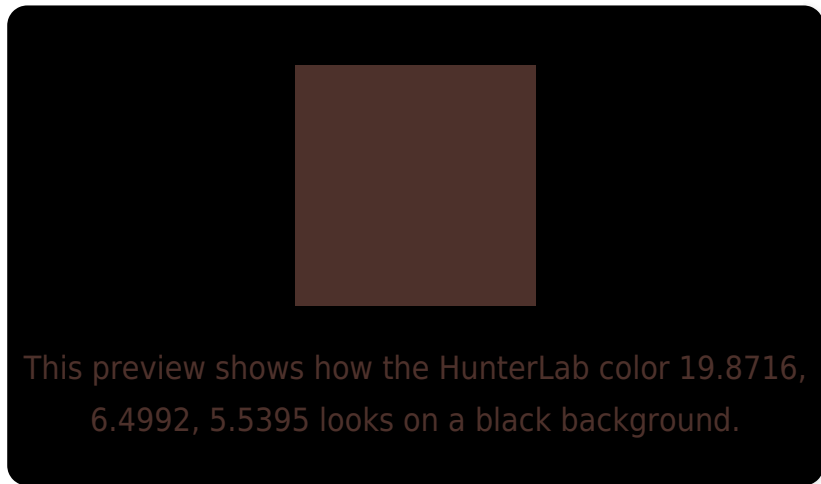
Large Text (above 18pt) WCAG AA ✓ Pass

Any Text WCAG AA ✓ Pass

Large Text (above 18pt) WCAG AAA ✓ Pass

Any Text WCAG AAA ✓ Pass

Black Background



Color Contrast Check

Large Text (above 18pt) WCAG AA × Fail

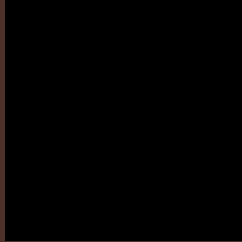
Any Text WCAG AA × Fail

Large Text (above 18pt) WCAG AAA × Fail

Any Text WCAG AAA × Fail

If you want to check with other color combinations, try the [Color Contrast Checker](#).

HunterLab 19.8716, 6.4992, 5.5395 Background



This preview shows how black text looks on a background with the HunterLab color 19.8716, 6.4992, 5.5395.



This preview shows how white text looks on a background with the HunterLab color 19.8716, 6.4992,

Color Blindness Simulation

Color vision deficiency is a very complex topic, and I could not describe the different causes any better than Wikipedia does, so if you want to learn more, you should check out their [article about color blindness](#).

Dichromacy



Original Color

19.8716, 6.4992, 5.5395

Protanopia

19.9656, -1.2276, 4.6055

Deuteranopia

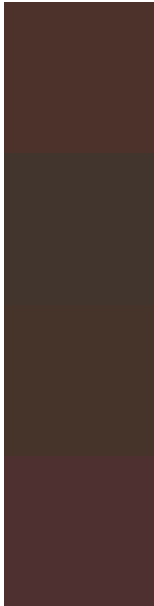
19.9092, 0.8770, 5.7600



Tritanopia

19.9314, 8.0749, 3.1064

Trichromacy



Original Color

19.8716, 6.4992, 5.5395

Protanomaly

19.7330, 1.5917, 4.7279

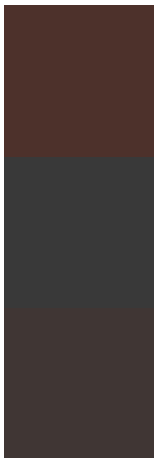
Deuteranomaly

19.8122, 2.9139, 5.7040

Tritanomaly

19.8671, 7.7513, 4.0326

Monochromacy



Original Color

19.8716, 6.4992, 5.5395

Achromatopsia

20.2275, -1.0793, 1.0990

Achromatomaly

19.9406, 1.3881, 2.6518

CSS Examples

Text

The CSS property to change the color of the text to HunterLab 19.8716, 6.4992, 5.5395 is called "color". The color property can be set on classes, ids or directly on the HTML element.

This example shows how text in the color `rgb(77, 49, 43)` looks like.

```
.text, #text, p{  
    color:rgb(77, 49, 43)  
}
```

If you want to add a text shadow in that color use the text-shadow property, you can generate a text shadow directly with our [CSS Text Shadow Generator](#).

Here you see how black text with a 4 pixel rgb(77, 49, 43) colored shadow looks like.

```
.shadow{ text-shadow: 4px 4px 2px rgb(77, 49, 43) }
```

Border

The CSS property to change the border of an element to HunterLab 19.8716, 6.4992, 5.5395 is called "border". The border property can be set on classes, ids or directly on the HTML element.

This example shows the color as border, it can be applied via the CSS property "border" or "border-color".

```
.border, #border, table{ border:4px solid rgb(77, 49, 43) }
```


If only the border color should be changed use the property `border-color`.

```
.border{ border-color:rgb(77, 49, 43) }
```

If you want to add a box shadow in that color use:

Here you see how a box with a 4 pixel `rgb(77, 49, 43)` colored shadow looks like.

```
.boxshadow{ -moz-box-shadow:4px 4px 4px  
4px rgb(77, 49, 43); -webkit-box-  
shadow:4px 4px 4px 4px rgb(77, 49, 43);  
box-shadow:4px 4px 4px 4px rgb(77, 49, 43)  
}
```

Background

The CSS property to change the background color of an element to HunterLab 19.8716, 6.4992, 5.5395 is called "background". The background property can be set on classes, ids or directly on the HTML element.

```
.background, #background, body{  
background: rgb(77, 49, 43) }
```

If only the background color should be changed can be used:

```
.background{ background-color: rgb(77, 49,  
43) }
```

This example shows the color as background, it is applied via the CSS property "background".

To optimize and compress your CSS code, you can use our [online CSS compressor and optimizer](#) based on csstidy. If you want to create a linear or radial gradient as background or border, check our [CSS Gradient Generator](#).

Hey! You found this booklet interesting? Support Converting Colors with the new Membership Option!

The pro membership hides all ads, plus gives you double the colors in the color bucket, and more awesome pro features!

[Learn more, Memberships starting at \\$2.50/m!](#)

**Follow me
on Twitter!**

@ConvertingColor