

Converting Colors

HunterLab(19.9124, 10.2118,
6.3513)

Have a look what the booklet for
HunterLab(19.9124, 10.2118,
6.3513) contains.

HunterLab(19.7858, 10.2803, 6.3563)	3
<i>Conversions</i>	4
<i>Details</i>	6
<i>Harmonies</i>	12
<i>Previews</i>	24
<i>Color Blindness Simulation</i>	28
<i>CSS Examples</i>	31

Color

**HunterLab(19.7858, 10.2803,
6.3563)**

Conversions

Conversions Part 1

Format	Color
Hex	542D28
RGB	84, 45, 40
RGB Percent	33%, 18%, 16%
CMY	0.6706, 0.8235, 0.8431
CMYK	0.00, 0.46, 0.52, 0.67
HSL	7°, 35%, 24%
HSV	7°, 52%, 33%
XYZ	4.9775, 3.9148, 2.5008
YIQ	56.0910, 24.8490, 6.7130

Conversions

Conversions Part 2

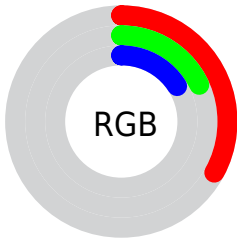
Format	Color
RYB	84, 46, 40
Decimal	5516584
CIELab	23.39, 17.29, 11.06
CIELCh	23, 20.525, 32.606
Yxy	3.9150, 0.4369, 0.3436
Android (android.graphics.Color)	4283706664 (0xFF542D28)
YUV	56.0910, -7.9329, 24.4762
Hunter-Lab	19.7858, 10.2803, 6.3563

Details

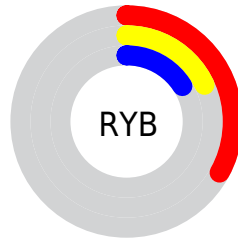
The HunterLab color **19.7858, 10.2803, 6.3563** is a dark color, and the websafe version is hex **663333**. A complement of this color would be **25.8512, -8.8430, -3.4622**, and the grayscale version is **19.9379, -1.0638, 1.0833**.

A 20% lighter version of the original color is **36.5681, 11.8324, 8.8058**, and **6.4193, 10.9932, 4.1480** is the 20% darker color. If you saturate the color by 10%, you get **18.2894, 12.7956, 7.1557**, and if you desaturate by 10%, it is **21.4421, 7.8128, 5.4969**.

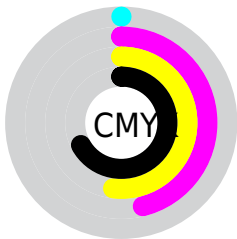
Distribution



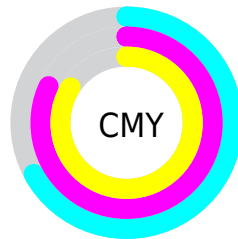
- Red (33%)
- Green (18%)
- Blue (16%)



- Red (33%)
- Yellow (18%)
- Blue (16%)



- Cyan (0%)
- Magenta (46%)
- Yellow (52%)
- Black (67%)



- Cyan (67%)
- Magenta (82%)
- Yellow (84%)

Brightness & Saturation Gradients

These gradients show how the HunterLab color 19.7858, 10.2803, 6.3563 changes by changing the brightness by 10 percent. The first figure shows a shift by +10% for each color and the second figure -10%.

Similar to the brightness gradients but the following saturation gradients show a change of the HunterLab color 19.7858, 10.2803, 6.3563 by changing the saturation by 10% instead.

■ 19.7858, 10.2803,
6.3563

■ 19.7858, 10.2803,
6.3563

■ 117.8028, 12.8787,
17.1719

■ 12.7519, 9.4421,
5.0180

■ 36.6324, 11.5067,
8.8592

■ 6.1246, 11.9743,
4.2872

■ 46.2640, 11.9436,
10.0593

0.0000, NaN, NaN

0.0000, NaN, NaN

■ 56.6172, 12.2845,
11.2452

0.0000, NaN, NaN

■ 67.6448, 12.5410,
12.4250

0.0000, NaN, NaN

■ 79.3079, 12.7221,
13.6043

0.0000, NaN, NaN

0.0000, NaN, NaN

■ 91.5735, 12.8349,

14.7868

0.0000, NaN, NaN

104.4133, 12.8855,
15.9754

19.7858, 10.2803,
6.3563

19.7858, 10.2803,
6.3563

18.2894, 12.7956,
7.1557

21.4421, 7.8128,
5.4969

16.9757, 15.2964,
7.8600

23.2351, 5.4320,
4.6014

15.8695, 17.6792,
8.4274

25.1463, 3.1518,
3.6869

14.9893, 19.7972,
8.8559

27.1598, 0.9739,
2.7637

14.4641, 21.0868,
9.2819

29.2626, -1.1068,
1.8380

■ 31.4437, -3.0989,
0.9132

■ 33.6942, -5.0120,
-0.0091

■ 36.0068, -6.8559,
-0.9285

■ 38.3752, -8.6397,
-1.8449

Harmonies

Analogous

The Analogous color harmony consists of three colors that are next to each other on the color wheel.



19.7863, 12.6334, 1.5964



19.7858, 10.2803, 6.3563



19.7863, 4.8623, 8.8474

Triad

The Triadic color harmony groups three colors that are evenly spaced from another and form a triangle on the color wheel.



19.7863, 10.2792, 6.3566



19.7863, -10.7476, 5.6991



19.7863, -0.5002, -14.3372

Complementary

The Complementary color scheme is a pair of colors which are on the opposite of each other on the color wheel.



19.7858, 10.2803, 6.3563



25.8512, -8.8430, -3.4622

Split Complementary

Split-complementary colors differ from the complementary color scheme. The scheme consists of three colors, the original color and two neighbors of the complement color.



19.7863, -6.3527, -12.2119



19.7858, 10.2803, 6.3563



19.7863, -11.8094, 0.5432

Square

The Square scheme is like the rectangle color scheme, but the four colors are evenly spaced on the color wheel.



19.7863, 10.2792, 6.3566



19.7863, -7.1992, 8.5602



19.7863, -10.3038, -6.2353



19.7863, 5.9403, -11.3740

Rectangle

The Rectangle color scheme consists of four colors that form a rectangle on the color wheel.



19.7858, 10.2803, 6.3563



19.7863, 0.5345, 9.4638



19.7863, -10.3038, -6.2353



19.7863, -2.5994, -14.1945

Sweetspot

The Sweet Spot groups the original color and five complimentary colors.



19.7863, 10.2792, 6.3566



34.7713, 2.4724, 4.1628



19.9392, 17.4606, -9.7456



17.4410, 1.4238, 2.1803



69.0652, -3.6851, 3.7524



19.9203, -1.0629, 1.0823

Same Dimension

The Same Dimension uses a secret algorithm to generate beautiful new colors.



19.7863, 10.2792, 6.3566



23.6610, 17.8449, 9.7334



24.4568, 1.0711, 10.2222



13.9059, 0.0966, 1.2058



17.9896, 27.0907, 11.5594



42.3320, 67.9064, 27.2736

Inverse Universe

The Inverse Universe completely reimagines the original color for something new.



25.8512, -8.8430, -3.4622



33.2320, -12.9063, -5.8898



20.1920, -0.2558, -12.1905



14.4472, -1.5618, 0.3405



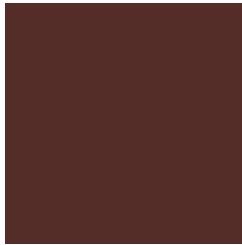
29.6320, -13.2329, -8.4715



70.5780, -31.0360, -21.2185

Previews

White Background



This preview shows how the HunterLab color 19.7858, 10.2803, 6.3563 looks on a white background.

Color Contrast Check

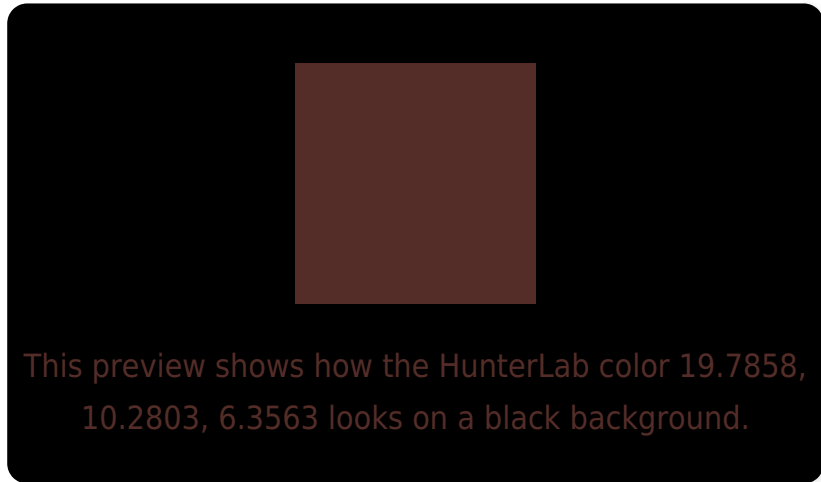
Large Text (above 18pt) WCAG AA ✓ Pass

Any Text WCAG AA ✓ Pass

Large Text (above 18pt) WCAG AAA ✓ Pass

Any Text WCAG AAA ✓ Pass

Black Background



Color Contrast Check

Large Text (above 18pt) WCAG AA × Fail

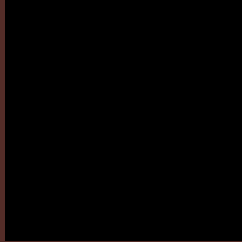
Any Text WCAG AA × Fail

Large Text (above 18pt) WCAG AAA × Fail

Any Text WCAG AAA × Fail

If you want to check with other color combinations, try the [Color Contrast Checker](#).

HunterLab 19.7858, 10.2803, 6.3563 Background



This preview shows how black text looks on a background with the HunterLab color 19.7858, 10.2803, 6.3563.

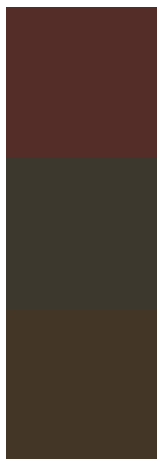


This preview shows how white text looks on a background with the HunterLab color 19.7858, 10.2803,

Color Blindness Simulation

Color vision deficiency is a very complex topic, and I could not describe the different causes any better than Wikipedia does, so if you want to learn more, you should check out their [article about color blindness](#).

Dichromacy



Original Color

19.7858, 10.2803, 6.3563

Protanopia

19.9461, -1.3348, 4.8877

Deuteranopia

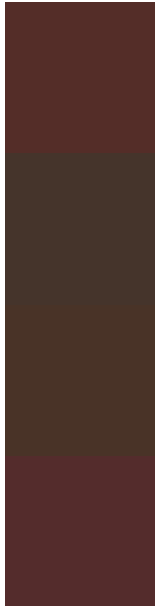
19.9288, 0.8067, 6.8387



Tritanopia

19.7267, 11.3544, 4.2713

Trichromacy



Original Color

19.7858, 10.2803, 6.3563

Protanomaly

19.7373, 2.7046, 5.3438

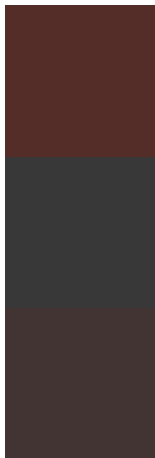
Deuteranomaly

19.8258, 3.9989, 6.5463

Tritanomaly

19.6673, 11.0661, 5.1291

Monochromacy



Original Color

19.7858, 10.2803, 6.3563

Achromatopsia

19.8862, -1.0611, 1.0805

Achromatomaly

19.6075, 2.5612, 3.0021

CSS Examples

Text

The CSS property to change the color of the text to HunterLab 19.7858, 10.2803, 6.3563 is called "color". The color property can be set on classes, ids or directly on the HTML element.

This example shows how text in the color `rgb(84, 45, 40)` looks like.

```
.text, #text, p{  
    color:rgb(84, 45, 40)  
}
```

If you want to add a text shadow in that color use the text-shadow property, you can generate a text shadow directly with our [CSS Text Shadow Generator](#).

Here you see how black text with a 4 pixel rgb(84, 45, 40) colored shadow looks like.

```
.shadow{ text-shadow: 4px 4px 2px rgb(84, 45, 40) }
```

Border

The CSS property to change the border of an element to HunterLab 19.7858, 10.2803, 6.3563 is called "border". The border property can be set on classes, ids or directly on the HTML element.

This example shows the color as border, it can be applied via the CSS property "border" or "border-color".

```
.border, #border, table{ border:4px solid rgb(84, 45, 40) }
```


If only the border color should be changed use the property `border-color`.

```
.border{ border-color:rgb(84, 45, 40) }
```

If you want to add a box shadow in that color use:

Here you see how a box with a 4 pixel `rgb(84, 45, 40)` colored shadow looks like.

```
.boxshadow{ -moz-box-shadow:4px 4px 4px  
4px rgb(84, 45, 40); -webkit-box-  
shadow:4px 4px 4px 4px rgb(84, 45, 40);  
box-shadow:4px 4px 4px 4px rgb(84, 45, 40)  
}
```

Background

The CSS property to change the background color of an element to HunterLab 19.7858, 10.2803, 6.3563 is called "background". The background property can be set on classes, ids or directly on the HTML element.

```
.background, #background, body{  
background: rgb(84, 45, 40) }
```

If only the background color should be changed can be used:

```
.background{ background-color: rgb(84, 45,  
40) }
```

This example shows the color as background, it is applied via the CSS property "background".

To optimize and compress your CSS code, you can use our [online CSS compressor and optimizer](#) based on csstidy. If you want to create a linear or radial gradient as background or border, check our [CSS Gradient Generator](#).

Hey! You found this booklet interesting? Support Converting Colors with the new Membership Option!

The pro membership hides all ads, plus gives you double the colors in the color bucket, and more awesome pro features!

[Learn more, Memberships starting at \\$2.50/m!](#)

**Follow me
on Twitter!**

@ConvertingColor