

Converting Colors

HunterLab(19.9185, 8.4919,
4.1986)

Have a look what the booklet for
HunterLab(19.9185, 8.4919, 4.1986)
contains.

HunterLab(19.8794, 8.8343, 4.0643)	3
<i>Conversions</i>	4
<i>Details</i>	6
<i>Harmonies</i>	12
<i>Previews</i>	24
<i>Color Blindness Simulation</i>	28
<i>CSS Examples</i>	31

Color

**HunterLab(19.8794, 8.8343,
4.0643)**

Conversions

Conversions Part 1

Format	Color
Hex	502F30
RGB	80, 47, 48
RGB Percent	31%, 18%, 19%
CMY	0.6863, 0.8157, 0.8118
CMYK	0.00, 0.41, 0.40, 0.69
HSL	358°, 26%, 25%
HSV	358°, 41%, 31%
XYZ	4.8583, 3.9519, 3.3030
YIQ	56.9810, 19.3470, 7.3070

Conversions

Conversions Part 2

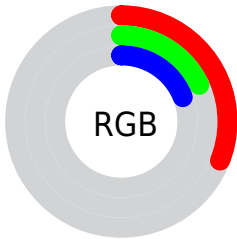
Format	Color
RYB	80, 47, 48
Decimal	5254960
CIELab	23.51, 15.25, 5.75
CIElCh	24, 16.297, 20.656
Yxy	3.9521, 0.4011, 0.3263
Android (android.graphics.Color)	4283445040 (0xFF502F30)
YUV	56.9810, -4.4276, 20.1877
Hunter-Lab	19.8794, 8.8343, 4.0643

Details

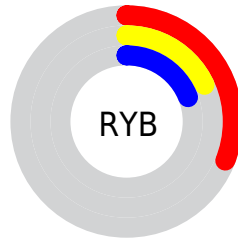
The HunterLab color **19.8794, 8.8343, 4.0643** is a dark color, and the websafe version is hex **663333**. A complement of this color would be **26.2798, -8.9552, -0.6529**, and the grayscale version is **20.2314, -1.0795, 1.0992**.

A 20% lighter version of the original color is **36.6908, 10.2000, 5.6750**, and **6.1243, 10.4880, 3.9574** is the 20% darker color. If you saturate the color by 10%, you get **18.1976, 11.5198, 4.8037**, and if you desaturate by 10%, it is **21.7284, 6.1926, 3.3726**.

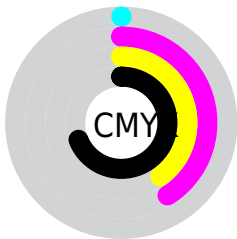
Distribution



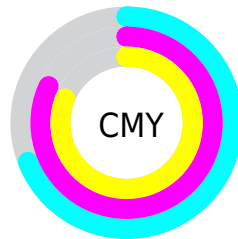
- Red (31%)
- Green (18%)
- Blue (19%)



- Red (31%)
- Yellow (18%)
- Blue (19%)



- Cyan (0%)
- Magenta (41%)
- Yellow (40%)
- Black (69%)



- Cyan (69%)
- Magenta (82%)
- Yellow (81%)

Brightness & Saturation Gradients

These gradients show how the HunterLab color 19.8794, 8.8343, 4.0643 changes by changing the brightness by 10 percent. The first figure shows a shift by +10% for each color and the second figure -10%.

Similar to the brightness gradients but the following saturation gradients show a change of the HunterLab color 19.8794, 8.8343, 4.0643 by changing the saturation by 10% instead.

■ 19.8794, 8.8343,
4.0643

■ 19.8794, 8.8343,
4.0643

■ 117.9724, 10.5534,
12.1536

■ 12.8328, 8.1205,
3.2012

■ 36.7472, 9.8300,
5.7684

■ 6.2358, 10.3230,
4.1609

■ 46.3881, 10.1609,
6.6310

0.0000, NaN, NaN

0.0000, NaN, NaN

■ 56.7500, 10.4011,
7.5074

0.0000, NaN, NaN

■ 67.7857, 10.5616,
8.4000

0.0000, NaN, NaN

■ 79.4564, 10.6510,
9.3103

0.0000, NaN, NaN

0.0000, NaN, NaN

■ 91.7293, 10.6759,

104.5762, 10.6418,
11.1867

■ 19.8794, 8.8343,
4.0643

■ 19.8794, 8.8343,
4.0643

■ 18.1976, 11.5198,
4.8037

■ 21.7284, 6.1926,
3.3726

■ 16.7108, 14.1843,
5.5737

■ 23.7180, 3.6312,
2.7328

■ 15.4511, 16.7129,
6.3435

■ 25.8277, 1.1604,
2.1444

■ 14.4484, 18.9445,
7.0638

■ 28.0406, -1.2204,
1.6033

■ 13.7028, 20.7628,
7.6627

■ 30.3430, -3.5180,
1.1043

■ 13.0797, 22.4399,
8.1375

■ 32.7236, -5.7417,
0.6421

■ 35.1736, -7.9015,
0.2118

■ 37.6856, -10.0066,
-0.1913

■ 40.2536, -12.0656,
-0.5709

Harmonies

Analogous

The Analogous color harmony consists of three colors that are next to each other on the color wheel.



19.8799, 9.4223, -0.4721



19.8794, 8.8343, 4.0643



19.8799, 5.4563, 6.9685

Triad

The Triadic color harmony groups three colors that are evenly spaced from another and form a triangle on the color wheel.



19.8799, 8.8333, 4.0647



19.8799, -8.0091, 6.0805



19.8799, -2.6095, -10.3200

Complementary

The Complementary color scheme is a pair of colors which are on the opposite of each other on the color wheel.



19.8794, 8.8343, 4.0643



26.2798, -8.9552, -0.6529

Split Complementary

Split-complementary colors differ from the complementary color scheme. The scheme consists of three colors, the original color and two neighbors of the complement color.



19.8799, -6.8352, -7.4397



19.8794, 8.8343, 4.0643



19.8799, -9.7418, 2.5202

Square

The Square scheme is like the rectangle color scheme, but the four colors are evenly spaced on the color wheel.



19.8799, 8.8333, 4.0647



19.8799, -4.3632, 7.9152



19.8799, -9.3346, -2.4488



19.8799, 2.4702, -9.6092

Rectangle

The Rectangle color scheme consists of four colors that form a rectangle on the color wheel.



19.8794, 8.8343, 4.0643



19.8799, 2.2480, 7.9585



19.8799, -9.3346, -2.4488



19.8799, -4.1683, -9.7174

Sweetspot

The Sweet Spot groups the original color and five complimentary colors.



19.8799, 8.8333, 4.0647



33.7794, 1.9144, 2.9217



20.6649, 12.9055, -8.8154



17.1157, 1.0740, 1.5111



67.9972, -3.6282, 3.6944



19.0543, -1.0167, 1.0353

Same Dimension

The Same Dimension uses a secret algorithm to generate beautiful new colors.



19.8799, 8.8333, 4.0647



24.1375, 15.0510, 6.2987



23.2374, 2.0896, 7.4930



13.8046, 0.2915, 1.0494



17.2714, 29.6179, 10.8493



41.4482, 71.0185, 26.4952

Inverse Universe

The Inverse Universe completely reimagines the original color for something new.



19.8799, 8.8333, 4.0647



24.1375, 15.0510, 6.2987



22.1778, -2.6902, -6.6708



13.8046, 0.2915, 1.0494



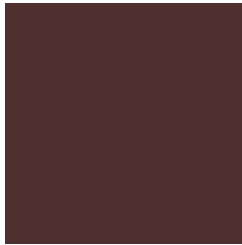
17.2714, 29.6179, 10.8493



41.4482, 71.0185, 26.4952

Previews

White Background



This preview shows how the HunterLab color 19.8794, 8.8343, 4.0643 looks on a white background.

Color Contrast Check

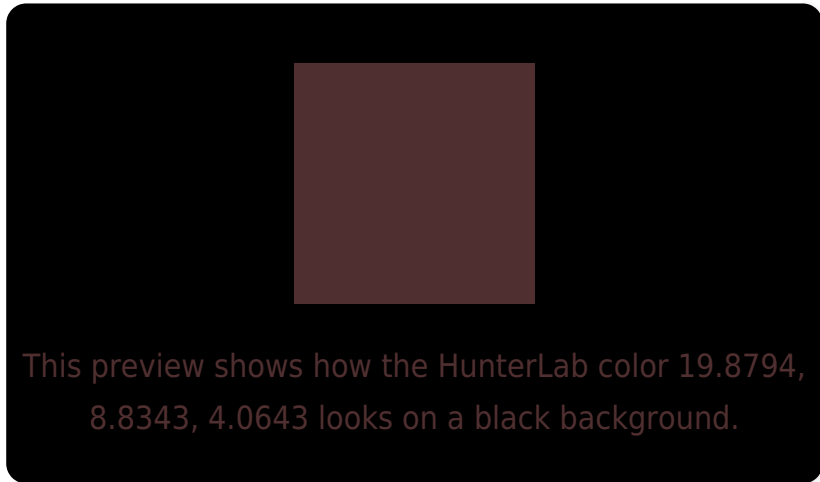
Large Text (above 18pt) WCAG AA ✓ Pass

Any Text WCAG AA ✓ Pass

Large Text (above 18pt) WCAG AAA ✓ Pass

Any Text WCAG AAA ✓ Pass

Black Background



Color Contrast Check

Large Text (above 18pt) WCAG AA × Fail

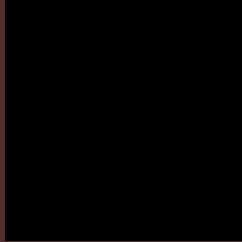
Any Text WCAG AA × Fail

Large Text (above 18pt) WCAG AAA × Fail

Any Text WCAG AAA × Fail

If you want to check with other color combinations, try the [Color Contrast Checker](#).

HunterLab 19.8794, 8.8343, 4.0643 Background



This preview shows how black text looks on a background with the HunterLab color 19.8794, 8.8343, 4.0643.

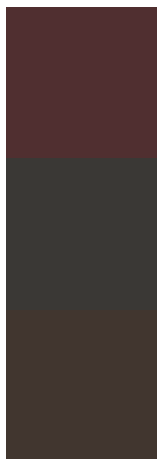


This preview shows how white text looks on a background with the HunterLab color 19.8794, 8.8343,

Color Blindness Simulation

Color vision deficiency is a very complex topic, and I could not describe the different causes any better than Wikipedia does, so if you want to learn more, you should check out their [article about color blindness](#).

Dichromacy



Original Color

19.8794, 8.8343, 4.0643

Protanopia

19.9623, -0.9397, 2.2804

Deuteranopia

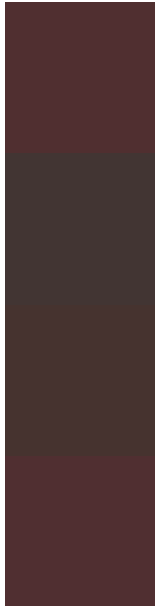
19.9183, 1.0990, 4.2876



Tritanopia

19.9218, 9.0454, 3.4533

Trichromacy



Original Color

19.8794, 8.8343, 4.0643

Protanomaly

19.8582, 2.2585, 2.9250

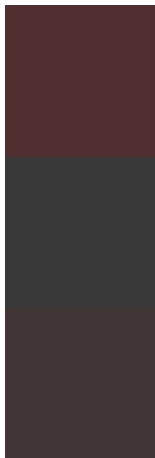
Deuteranomaly

19.6850, 3.8421, 4.0970

Tritanomaly

19.9004, 8.9388, 3.7619

Monochromacy



Original Color

19.8794, 8.8343, 4.0643

Achromatopsia

20.2275, -1.0793, 1.0990

Achromatomaly

19.8403, 2.3369, 1.8369

CSS Examples

Text

The CSS property to change the color of the text to HunterLab 19.8794, 8.8343, 4.0643 is called "color". The color property can be set on classes, ids or directly on the HTML element.

This example shows how text in the color `rgb(80, 47, 48)` looks like.

```
.text, #text, p{  
    color:rgb(80, 47, 48)  
}
```

If you want to add a text shadow in that color use the text-shadow property, you can generate a text shadow directly with our [CSS Text Shadow Generator](#).

Here you see how black text with a 4 pixel rgb(80, 47, 48) colored shadow looks like.

```
.shadow{ text-shadow: 4px 4px 2px rgb(80, 47, 48) }
```

Border

The CSS property to change the border of an element to HunterLab 19.8794, 8.8343, 4.0643 is called "border".

The border property can be set on classes, ids or directly on the HTML element.

This example shows the color as border, it can be applied via the CSS property "border" or "border-color".

```
.border, #border, table{ border:4px solid rgb(80, 47, 48) }
```


If only the border color should be changed use the property border-color.

```
.border{ border-color:rgb(80, 47, 48) }
```

If you want to add a box shadow in that color use:

Here you see how a box with a 4 pixel rgb(80, 47, 48) colored shadow looks like.

```
.boxshadow{ -moz-box-shadow:4px 4px 4px  
4px rgb(80, 47, 48); -webkit-box-  
shadow:4px 4px 4px 4px rgb(80, 47, 48);  
box-shadow:4px 4px 4px 4px rgb(80, 47, 48)  
}
```

Background

The CSS property to change the background color of an element to HunterLab 19.8794, 8.8343, 4.0643 is called "background". The background property can be set on classes, ids or directly on the HTML element.

```
.background, #background, body{  
background: rgb(80, 47, 48) }
```

If only the background color should be changed can be used:

```
.background{ background-color: rgb(80, 47,  
48) }
```

This example shows the color as background, it is applied via the CSS property "background".

To optimize and compress your CSS code, you can use our [online CSS compressor and optimizer](#) based on csstidy. If you want to create a linear or radial gradient as background or border, check our [CSS Gradient Generator](#).

Hey! You found this booklet interesting? Support Converting Colors with the new Membership Option!

The pro membership hides all ads, plus gives you double the colors in the color bucket, and more awesome pro features!

[Learn more, Memberships starting at \\$2.50/m!](#)

**Follow me
on Twitter!**

@ConvertingColor