

Converting Colors

HunterLab(19.9391, 1.9660,
7.3577)

Have a look what the booklet for
HunterLab(19.9391, 1.9660, 7.3577)
contains.

HunterLab(19.9391, 1.9660, 7.3577)	3
<i>Conversions</i>	4
<i>Details</i>	6
<i>Harmonies</i>	12
<i>Previews</i>	24
<i>Color Blindness Simulation</i>	28
<i>CSS Examples</i>	31

Color

**HunterLab(19.9391, 1.9660,
7.3577)**

Conversions

Conversions Part 1

Format	Color
Hex	463524
RGB	70, 53, 36
RGB Percent	27%, 21%, 14%
CMY	0.7255, 0.7921, 0.8588
CMYK	0.00, 0.24, 0.49, 0.73
HSL	30°, 32%, 21%
HSV	30°, 49%, 27%
XYZ	4.1173, 3.9757, 2.2195
YIQ	56.1450, 15.5890, -1.6830

Conversions

Conversions Part 2

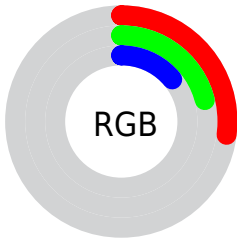
Format	Color
R_{YB}	70, 70, 36
Decimal	4601124
CIE Lab	23.59, 4.95, 13.63
CIE LCh	24, 14.498, 70.036
Yxy	3.9759, 0.3993, 0.3855
Android (android.graphics.Color)	4282791204 (0xFF463524)
YUV	56.1450, -9.9315, 12.1508
Hunter-Lab	19.9391, 1.9660, 7.3577

Details

The HunterLab color **19.9391, 1.9660, 7.3577** is a dark color, and the websafe version is hex **333333**. A complement of this color would be **18.3395, -1.8619, -7.4645**, and the grayscale version is **19.9651, -1.0653, 1.0847**.

A 20% lighter version of the original color is **36.6602, 1.8435, 10.0322**, and **6.4419, 3.2375, 4.0262** is the 20% darker color. If you saturate the color by 10%, you get **19.0517, 2.8903, 8.1726**, and if you desaturate by 10%, it is **20.8656, 1.1299, 6.3826**.

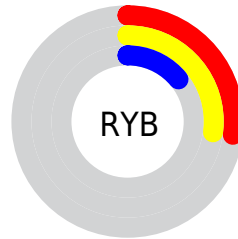
Distribution



Red (27%)

Green (21%)

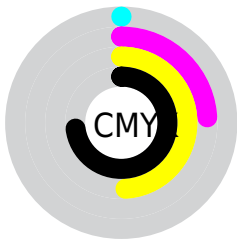
Blue (14%)



Red (27%)

Yellow (27%)

Blue (14%)

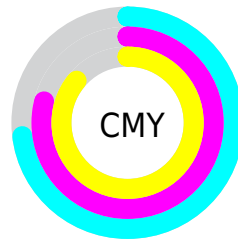


Cyan (0%)

Magenta (24%)

Yellow (49%)

Black (73%)



Cyan (73%)

Magenta (79%)

Yellow (86%)

Brightness & Saturation Gradients

These gradients show how the HunterLab color 19.9391, 1.9660, 7.3577 changes by changing the brightness by 10 percent. The first figure shows a shift by +10% for each color and the second figure -10%.

Similar to the brightness gradients but the following saturation gradients show a change of the HunterLab color 19.9391, 1.9660, 7.3577 by changing the saturation by 10% instead.

■ 19.9391, 1.9660,
7.3577

■ 19.9391, 1.9660,
7.3577

■ 118.0804, -0.9333,
19.5415

■ 12.8844, 1.9570,
5.8641

■ 36.8205, 1.7152,
10.2633

■ 6.3056, 3.0841,
4.4139

■ 46.4673, 1.4860,
11.6333

0.0000, NaN, NaN

0.0000, NaN, NaN

■ 56.8346, 1.1990,
12.9747

0.0000, NaN, NaN

■ 67.8755, 0.8603,
14.2985

0.0000, NaN, NaN

■ 79.5511, 0.4743,
15.6124

0.0000, NaN, NaN

0.0000, NaN, NaN

■ 91.8287, 0.0448,

16.9218

0.0000, NaN, NaN

104.6799, -0.4252,
18.2305

19.9391, 1.9660,
7.3577

19.9391, 1.9660,
7.3577

19.0517, 2.8903,
8.1726

20.8656, 1.1299,
6.3826

18.2050, 3.9070,
8.8140

21.8272, 0.3813,
5.2594

17.4024, 5.0146,
9.2712

22.8216, -0.2850,
4.0009

16.6460, 6.2055,
9.5475

23.8467, -0.8738,
2.6189

15.9255, 7.4060,
9.8359

24.9002, -1.3900,
1.1244

■ 15.8252, 7.5760,
9.8840

■ 25.9802, -1.8388,
-0.4725

■ 27.0849, -2.2249,
-2.1631

■ 28.2127, -2.5531,
-3.9390

■ 29.3621, -2.8277,
-5.7933

Harmonies

Analogous

The Analogous color harmony consists of three colors that are next to each other on the color wheel.



19.9396, 5.9753, 5.6734



19.9391, 1.9660, 7.3577



19.9396, -2.5454, 7.5905

Triad

The Triadic color harmony groups three colors that are evenly spaced from another and form a triangle on the color wheel.



19.9396, 1.9652, 7.3580



19.9396, -8.8648, -0.3975



19.9396, 4.7900, -6.2711

Complementary

The Complementary color scheme is a pair of colors which are on the opposite of each other on the color wheel.



19.9391, 1.9660, 7.3577



18.3395, -1.8619, -7.4645

Split Complementary

Split-complementary colors differ from the complementary color scheme. The scheme consists of three colors, the original color and two neighbors of the complement color.



19.9396, 0.4599, -8.7982



19.9391, 1.9660, 7.3577



19.9396, -7.2465, -4.9444

Square

The Square scheme is like the rectangle color scheme, but the four colors are evenly spaced on the color wheel.



19.9396, 1.9652, 7.3580



19.9396, -8.5391, 3.6877



19.9396, -3.9244, -8.2652



19.9396, 7.7034, -1.9231

Rectangle

The Rectangle color scheme consists of four colors that form a rectangle on the color wheel.



19.9391, 1.9660, 7.3577



19.9396, -5.1998, 6.9604



19.9396, -3.9244, -8.2652



19.9396, 3.4369, -7.4010

Sweetspot

The Sweet Spot groups the original color and five complimentary colors.



19.9396, 1.9652, 7.3580



30.4947, -0.6154, 4.7551



16.7956, 10.9856, -1.3483



15.3485, -0.2734, 2.4871



64.8100, -3.4581, 3.5212



16.4960, -0.8802, 0.8963

Same Dimension

The Same Dimension uses a secret algorithm to generate beautiful new colors.



19.9396, 1.9652, 7.3580



24.9198, 4.0475, 10.9507



24.1035, -4.8986, 10.6610



12.7039, -0.4642, 1.3991



22.2177, 11.9268, 13.8992



53.1431, 33.3676, 33.3307

Inverse Universe

The Inverse Universe completely reimagines the original color for something new.



18.3395, -1.8619, -7.4645



22.3443, -2.0083, -13.0122



14.4190, 5.2694, -14.8488



12.5455, -0.8517, -0.0593



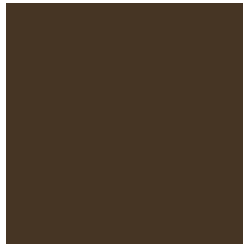
17.7955, 2.9857, -28.6881



41.7818, 11.5361, -77.1268

Previews

White Background



This preview shows how the HunterLab color 19.9391, 1.9660, 7.3577 looks on a white background.

Color Contrast Check

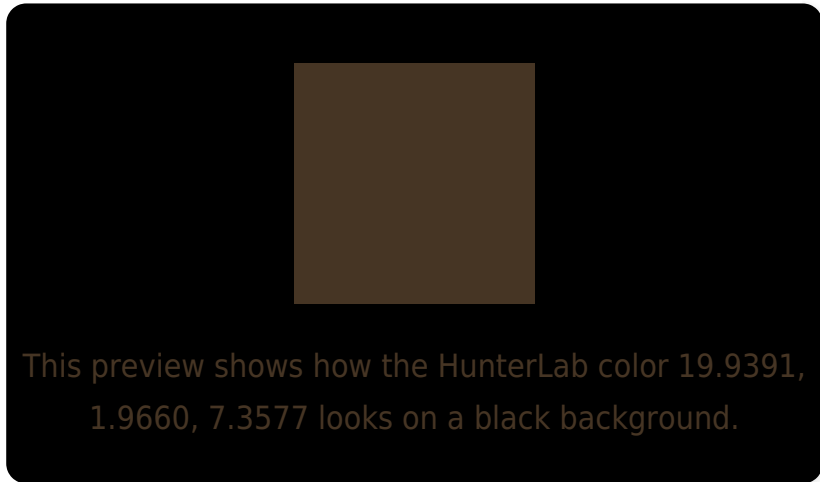
Large Text (above 18pt) WCAG AA ✓ Pass

Any Text WCAG AA ✓ Pass

Large Text (above 18pt) WCAG AAA ✓ Pass

Any Text WCAG AAA ✓ Pass

Black Background



Color Contrast Check

Large Text (above 18pt) WCAG AA × Fail

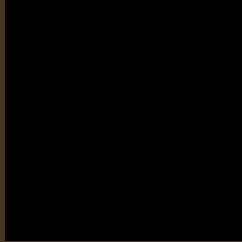
Any Text WCAG AA × Fail

Large Text (above 18pt) WCAG AAA × Fail

Any Text WCAG AAA × Fail

If you want to check with other color combinations, try the [Color Contrast Checker](#).

HunterLab 19.9391, 1.9660, 7.3577 Background



This preview shows how black text looks on a background with the HunterLab color 19.9391, 1.9660, 7.3577.

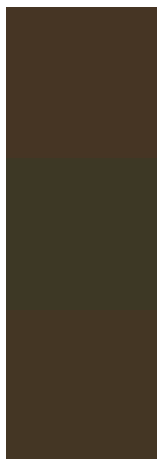


This preview shows how white text looks on a background with the HunterLab color 19.9391, 1.9660,

Color Blindness Simulation

Color vision deficiency is a very complex topic, and I could not describe the different causes any better than Wikipedia does, so if you want to learn more, you should check out their [article about color blindness](#).

Dichromacy



Original Color

19.9391, 1.9660, 7.3577

Protanopia

19.8847, -1.8305, 7.0021

Deuteranopia

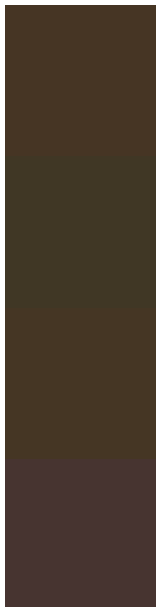
19.9866, 0.9393, 7.3809



Tritanopia

20.0529, 5.3724, 1.7639

Trichromacy



Original Color

19.9391, 1.9660, 7.3577

Protanomaly

19.8895, -0.5735, 7.0283

Deuteranomaly

20.0771, 1.2444, 7.4643

Tritanomaly

20.0224, 3.8304, 4.1244

Monochromacy



Original Color

19.9391, 1.9660, 7.3577

Achromatopsia

19.8862, -1.0611, 1.0805

Achromatomaly

19.8651, -0.2140, 3.5645

CSS Examples

Text

The CSS property to change the color of the text to HunterLab 19.9391, 1.9660, 7.3577 is called "color". The color property can be set on classes, ids or directly on the HTML element.

This example shows how text in the color `rgb(70, 53, 36)` looks like.

```
.text, #text, p{  
    color:rgb(70, 53, 36)  
}
```

If you want to add a text shadow in that color use the text-shadow property, you can generate a text shadow directly with our [CSS Text Shadow Generator](#).

Here you see how black text with a 4 pixel rgb(70, 53, 36) colored shadow looks like.

```
.shadow{ text-shadow: 4px 4px 2px rgb(70, 53, 36) }
```

Border

The CSS property to change the border of an element to HunterLab 19.9391, 1.9660, 7.3577 is called "border". The border property can be set on classes, ids or directly on the HTML element.

This example shows the color as border, it can be applied via the CSS property "border" or "border-color".

```
.border, #border, table{ border:4px solid rgb(70, 53, 36) }
```


If only the border color should be changed use the property `border-color`.

```
.border{ border-color:rgb(70, 53, 36) }
```

If you want to add a box shadow in that color use:

Here you see how a box with a 4 pixel `rgb(70, 53, 36)` colored shadow looks like.

```
.boxshadow{ -moz-box-shadow:4px 4px 4px  
4px rgb(70, 53, 36); -webkit-box-  
shadow:4px 4px 4px 4px rgb(70, 53, 36);  
box-shadow:4px 4px 4px 4px rgb(70, 53, 36)  
}
```

Background

The CSS property to change the background color of an element to HunterLab 19.9391, 1.9660, 7.3577 is called "background". The background property can be set on classes, ids or directly on the HTML element.

```
.background, #background, body{  
background: rgb(70, 53, 36) }
```

If only the background color should be changed can be used:

```
.background{ background-color: rgb(70, 53,  
36) }
```

This example shows the color as background, it is applied via the CSS property "background".

To optimize and compress your CSS code, you can use our [online CSS compressor and optimizer](#) based on csstidy. If you want to create a linear or radial gradient as background or border, check our [CSS Gradient Generator](#).

Hey! You found this booklet interesting? Support Converting Colors with the new Membership Option!

The pro membership hides all ads, plus gives you double the colors in the color bucket, and more awesome pro features!

[Learn more, Memberships starting at \\$2.50/m!](#)

**Follow me
on Twitter!**

@ConvertingColor