

# Converting Colors

HunterLab(20.0638, 1.0375,  
6.9860)

Have a look what the booklet for  
HunterLab(20.0638, 1.0375, 6.9860)  
contains.

<b>HunterLab(20.0180, 1.1081, 6.9232)</b> .....	3
<b><i>Conversions</i></b> .....	4
<b><i>Details</i></b> .....	6
<b><i>Harmonies</i></b> .....	12
<b><i>Previews</i></b> .....	24
<b><i>Color Blindness Simulation</i></b> .....	28
<b><i>CSS Examples</i></b> .....	31

# Color

**HunterLab(20.0180, 1.1081,  
6.9232)**

# Conversions

## Conversions Part 1

<b>Format</b>	<b>Color</b>
Hex	443626
RGB	68, 54, 38
RGB Percent	27%, 21%, 15%
CMY	0.7333, 0.7882, 0.8510
CMYK	0.00, 0.21, 0.44, 0.73
HSL	32°, 28%, 21%
HSV	32°, 44%, 27%
XYZ	4.0529, 4.0072, 2.3936
YIQ	56.3620, 13.4800, -2.0080

# Conversions

## Conversions Part 2

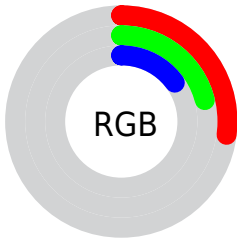
<b>Format</b>	<b>Color</b>
<a href="#">RYB</a>	<a href="#">64, 68, 38</a>
Decimal	<a href="#">4470310</a>
CIELab	<a href="#">23.70, 3.58, 12.41</a>
CIElCh	<a href="#">24, 12.920, 73.915</a>
Yxy	<a href="#">4.0074, 0.3877, 0.3833</a>
Android (android.graphics.Color)	<a href="#">4282660390 (0xFF443626)</a>
YUV	<a href="#">56.3620, -9.0525, 10.2065</a>
Hunter-Lab	<a href="#">20.0180, 1.1081, 6.9232</a>

# Details

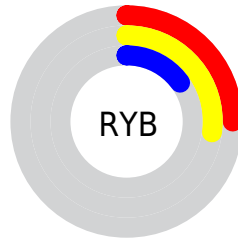
The HunterLab color **20.0180, 1.1081, 6.9232** is a dark color, and the websafe version is hex **333333**. A complement of this color would be **18.1254, -1.4793, -6.7462**, and the grayscale version is **20.0367, -1.0691, 1.0886**.

A 20% lighter version of the original color is **37.0322, 0.5120, 9.7257**, and **6.4131, 2.2830, 3.9917** is the 20% darker color. If you saturate the color by 10%, you get **19.1877, 1.8676, 7.8074**, and if you desaturate by 10%, it is **20.8817, 0.4321, 5.8828**.

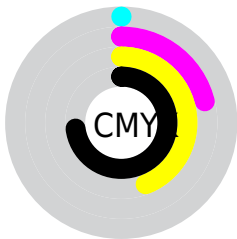
# Distribution



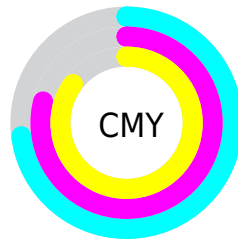
- Red (27%)
- Green (21%)
- Blue (15%)



- Red (25%)
- Yellow (27%)
- Blue (15%)



- Cyan (0%)
- Magenta (21%)
- Yellow (44%)
- Black (73%)



- Cyan (73%)
- Magenta (79%)
- Yellow (85%)

# Brightness & Saturation Gradients

These gradients show how the HunterLab color 20.0180, 1.1081, 6.9232 changes by changing the brightness by 10 percent. The first figure shows a shift by +10% for each color and the second figure -10%.

Similar to the brightness gradients but the following saturation gradients show a change of the HunterLab color 20.0180, 1.1081, 6.9232 by changing the saturation by 10% instead.



■ 20.0180, 1.1081,  
6.9232

■ 20.0180, 1.1081,  
6.9232

■ 118.2231, -2.4367,  
18.4537

■ 12.9526, 1.2039,  
5.4827

■ 36.9173, 0.6788,  
9.6348

■ 6.3965, 2.0969,  
4.4776

■ 46.5719, 0.3708,  
10.9235

0.0000, NaN, NaN

■ 56.9465, 0.0104,  
12.1907

0.0000, NaN, NaN

■ 67.9942, -0.3976,  
13.4460

0.0000, NaN, NaN

■ 79.6762, -0.8492,  
14.6959

0.0000, NaN, NaN

■ 91.9599, -1.3413,

0.0000, NaN, NaN

15.9451

0.0000, NaN, NaN

104.8170, -1.8711,  
17.1968

20.0180, 1.1081,  
6.9232

20.0180, 1.1081,  
6.9232

19.1877, 1.8676,  
7.8074

20.8817, 0.4321,  
5.8828

18.3914, 2.7154,  
8.5234

21.7751, -0.1615,  
4.6968

17.6320, 3.6515,  
9.0614

22.6969, -0.6776,  
3.3769

16.9117, 4.6745,  
9.4138

23.6451, -1.1206,  
1.9338

16.2257, 5.7449,  
9.6789

24.6180, -1.4952,  
0.3775

■ 15.8339, 6.3696,  
9.8683

■ 25.6141, -1.8059,  
-1.2828

■ 26.6320, -2.0569,  
-3.0385

■ 27.6702, -2.2527,  
-4.8821

■ 28.7276, -2.3970,  
-6.8066

# Harmonies

## Analogous

The Analogous color harmony consists of three colors that are next to each other on the color wheel.



20.0185, 4.7800, 5.5302



20.0180, 1.1081, 6.9232



20.0185, -2.8860, 6.9714

# Triad

The Triadic color harmony groups three colors that are evenly spaced from another and form a triangle on the color wheel.



20.0185, 1.1073, 6.9235



20.0185, -8.0031, -0.7515



20.0185, 4.5513, -4.9320

# Complementary

The Complementary color scheme is a pair of colors which are on the opposite of each other on the color wheel.



20.0180, 1.1081, 6.9232



18.1254, -1.4793, -6.7462

# Split Complementary

Split-complementary colors differ from the complementary color scheme. The scheme consists of three colors, the original color and two neighbors of the complement color.



20.0185, 0.8148, -7.3955



20.0180, 1.1081, 6.9232



20.0185, -6.3155, -4.6802

# Square

The Square scheme is like the rectangle color scheme, but the four colors are evenly spaced on the color wheel.



20.0185, 1.1073, 6.9235



20.0185, -7.9382, 3.0132



20.0185, -3.1566, -7.2952



20.0185, 6.8725, -1.0460



# Rectangle

The Rectangle color scheme consists of four colors that form a rectangle on the color wheel.



20.0180, 1.1081, 6.9232



20.0185, -5.1836, 6.2614



20.0185, -3.1566, -7.2952



20.0185, 3.4069, -5.9851

# Sweetspot

The Sweet Spot groups the original color and five complimentary colors.



20.0185, 1.1073, 6.9235



29.9942, -0.9288, 4.3490



16.9208, 9.3872, -0.7930



15.5299, -0.4429, 2.3800



64.8100, -3.4581, 3.5212



16.4960, -0.8802, 0.8963



# Same Dimension

The Same Dimension uses a secret algorithm to generate beautiful new colors.



20.0185, 1.1073, 6.9235



25.1765, 2.5831, 10.4119



23.3826, -4.7983, 9.6744



11.9603, -0.4820, 1.3271



22.2798, 10.1473, 13.9063



54.1021, 29.1913, 33.8485



# Inverse Universe

The Inverse Universe completely reimagines the original color for something new.



18.1254, -1.4793, -6.7462



22.1034, -1.5256, -11.9065



14.9498, 4.5622, -12.3971



11.7653, -0.7560, -0.0700



16.5964, 4.2937, -30.0130

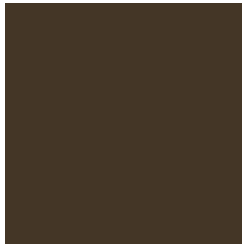


39.3029, 15.3798, -82.3258



# Previews

## White Background



This preview shows how the HunterLab color 20.0180, 1.1081, 6.9232 looks on a white background.

## Color Contrast Check

Large Text (above 18pt) WCAG AA ✓ Pass

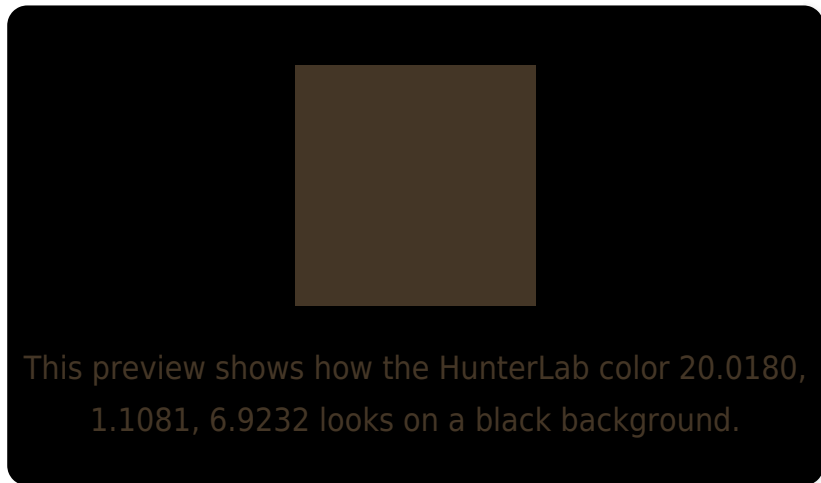
Any Text WCAG AA ✓ Pass

Large Text (above 18pt) WCAG AAA ✓ Pass

Any Text WCAG AAA ✓ Pass



# Black Background



## Color Contrast Check

Large Text (above 18pt) WCAG AA × Fail

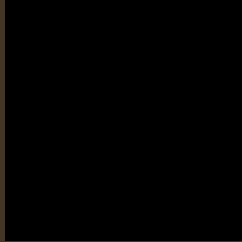
Any Text WCAG AA × Fail

Large Text (above 18pt) WCAG AAA × Fail

Any Text WCAG AAA × Fail

If you want to check with other color combinations, try the [Color Contrast Checker](#).

# HunterLab 20.0180, 1.1081, 6.9232 Background



This preview shows how black text looks on a background with the HunterLab color 20.0180, 1.1081, 6.9232.



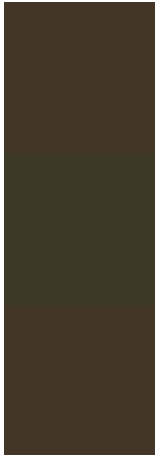
This preview shows how white text looks on a background with the HunterLab color 20.0180, 1.1081,



# Color Blindness Simulation

Color vision deficiency is a very complex topic, and I could not describe the different causes any better than Wikipedia does, so if you want to learn more, you should check out their [article about color blindness](#).

## Dichromacy



### Original Color

20.0180, 1.1081, 6.9232

### Protanopia

20.1614, -2.0481, 6.7429

### Deuteranopia

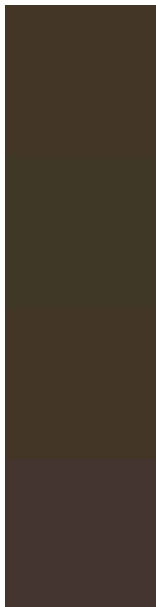
20.0180, 1.1081, 6.9232



## Tritanopia

20.1087, 4.4675, 1.4377

# Trichromacy



## Original Color

20.0180, 1.1081, 6.9232

## Protanomaly

20.1614, -0.8002, 6.7647

## Deuteranomaly

20.0180, 1.1081, 6.9232

## Tritanomaly

20.0827, 2.9121, 3.8473

# Monochromacy



## Original Color

20.0180, 1.1081, 6.9232

## Achromatopsia

19.8862, -1.0611, 1.0805

## Achromatomaly

19.7858, -0.4870, 3.4761

# CSS Examples

## Text

The CSS property to change the color of the text to HunterLab 20.0180, 1.1081, 6.9232 is called "color". The color property can be set on classes, ids or directly on the HTML element.

This example shows how text in the color `rgb(68, 54, 38)` looks like.

```
.text, #text, p{  
    color:rgb(68, 54, 38)  
}
```

If you want to add a text shadow in that color use the text-shadow property, you can generate a text shadow directly with our [CSS Text Shadow Generator](#).

Here you see how black text with a 4 pixel rgb(68, 54, 38) colored shadow looks like.

```
.shadow{ text-shadow: 4px 4px 2px rgb(68, 54, 38) }
```

## Border

The CSS property to change the border of an element to HunterLab 20.0180, 1.1081, 6.9232 is called "border".

The border property can be set on classes, ids or directly on the HTML element.

This example shows the color as border, it can be applied via the CSS property "border" or "border-color".

```
.border, #border, table{ border:4px solid rgb(68, 54, 38) }
```



If only the border color should be changed use the property border-color.

```
.border{ border-color:rgb(68, 54, 38) }
```

If you want to add a box shadow in that color use:

Here you see how a box with a 4 pixel rgb(68, 54, 38) colored shadow looks like.

```
.boxshadow{ -moz-box-shadow:4px 4px 4px  
4px rgb(68, 54, 38); -webkit-box-  
shadow:4px 4px 4px 4px rgb(68, 54, 38);  
box-shadow:4px 4px 4px 4px rgb(68, 54, 38)  
}
```

# Background

The CSS property to change the background color of an element to HunterLab 20.0180, 1.1081, 6.9232 is called "background". The background property can be set on classes, ids or directly on the HTML element.

```
.background, #background, body{  
background: rgb(68, 54, 38) }
```

If only the background color should be changed can be used:

```
.background{ background-color: rgb(68, 54,  
38) }
```

This example shows the color as background, it is applied via the CSS property "background".

To optimize and compress your CSS code, you can use our [online CSS compressor and optimizer](#) based on csstidy. If you want to create a linear or radial gradient as background or border, check our [CSS Gradient Generator](#).

Hey! You found this booklet interesting? Support Converting Colors with the new Membership Option!

The pro membership hides all ads, plus gives you double the colors in the color bucket, and more awesome pro features!

**[Learn more, Memberships starting at \\$2.50/m!](#)**

**Follow me  
on Twitter!**

@ConvertingColor