

Converting Colors

HunterLab(20.1033, 10.2366,
4.4889)

Have a look what the booklet for
HunterLab(20.1033, 10.2366,
4.4889) contains.

HunterLab(19.9956, 10.1547, 4.5247)	3
<i>Conversions</i>	4
<i>Details</i>	6
<i>Harmonies</i>	12
<i>Previews</i>	24
<i>Color Blindness Simulation</i>	28
<i>CSS Examples</i>	31

Color

**HunterLab(19.9956, 10.1547,
4.5247)**

Conversions

Conversions Part 1

Format	Color
Hex	532E2F
RGB	83, 46, 47
RGB Percent	33%, 18%, 18%
CMY	0.6745, 0.8196, 0.8157
CMYK	0.00, 0.45, 0.43, 0.67
HSL	358°, 29%, 25%
HSV	358°, 45%, 33%
XYZ	5.0574, 3.9982, 3.1945
YIQ	57.1770, 21.7310, 8.1550

Conversions

Conversions Part 2

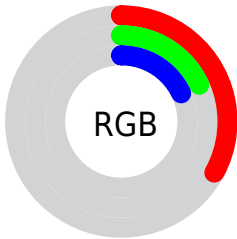
Format	Color
R_{YB}	83, 46, 47
Decimal	5451311
CIE Lab	23.67, 17.09, 6.70
CIE LCh	24, 18.355, 21.425
Yxy	3.9984, 0.4128, 0.3264
Android (android.graphics.Color)	4283641391 (0xFF532E2F)
YUV	57.1770, -5.0173, 22.6468
Hunter-Lab	19.9956, 10.1547, 4.5247

Details

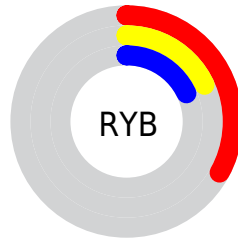
The HunterLab color **19.9956, 10.1547, 4.5247** is a dark color, and the websafe version is hex **663333**. A complement of this color would be **27.1600, -9.7849, -0.8624**, and the grayscale version is **20.2999, -1.0831, 1.1029**.

A 20% lighter version of the original color is **36.9964, 11.1100, 6.3952**, and **6.4193, 10.9932, 4.1480** is the 20% darker color. If you saturate the color by 10%, you get **18.3092, 12.9600, 5.3145**, and if you desaturate by 10%, it is **21.8682, 7.3757, 3.7784**.

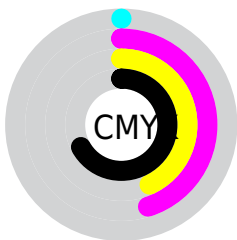
Distribution



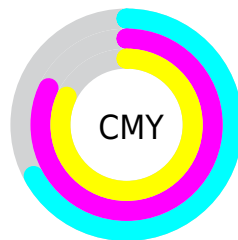
- Red (33%)
- Green (18%)
- Blue (18%)



- Red (33%)
- Yellow (18%)
- Blue (18%)



- Cyan (0%)
- Magenta (45%)
- Yellow (43%)
- Black (67%)



- Cyan (67%)
- Magenta (82%)
- Yellow (82%)

Brightness & Saturation Gradients

These gradients show how the HunterLab color 19.9956, 10.1547, 4.5247 changes by changing the brightness by 10 percent. The first figure shows a shift by +10% for each color and the second figure -10%.

Similar to the brightness gradients but the following saturation gradients show a change of the HunterLab color 19.9956, 10.1547, 4.5247 by changing the saturation by 10% instead.

■ 19.9956, 10.1547,
4.5247

■ 19.9956, 10.1547,
4.5247

■ 118.1826, 12.6456,
13.0936

■ 12.9332, 9.3332,
3.5758

■ 36.8898, 11.3515,
6.3676

■ 6.3709, 11.3467,
4.4596

■ 46.5422, 11.7753,
7.2893

0.0000, NaN, NaN

0.0000, NaN, NaN

■ 56.9147, 12.1039,
8.2202

0.0000, NaN, NaN

■ 67.9605, 12.3488,
9.1636

0.0000, NaN, NaN

■ 79.6408, 12.5188,
10.1215

0.0000, NaN, NaN

0.0000, NaN, NaN

■ 91.9227, 12.6213,

11.0953

0.0000, NaN, NaN

104.7781, 12.6619,
12.0858

■ 19.9956, 10.1547,
4.5247

■ 19.9956, 10.1547,
4.5247

■ 18.3092, 12.9600,
5.3145

■ 21.8682, 7.3757,
3.7784

■ 16.8396, 15.7069,
6.1241

■ 23.8972, 4.6726,
3.0841

■ 15.6207, 18.2548,
6.9135

■ 26.0595, 2.0631,
2.4432

■ 14.6815, 20.4205,
7.6246

■ 28.3359, -0.4502,
1.8527

■ 13.9687, 22.2274,
8.1898

■ 30.7107, -2.8729,
1.3075

■ 13.5790, 23.2907,
8.4944

■ 33.1713, -5.2144,
0.8022

■ 35.7076, -7.4851,
0.3314

■ 38.3113, -9.6952,
-0.1098

■ 40.9757, -11.8539,
-0.5255

Harmonies

Analogous

The Analogous color harmony consists of three colors that are next to each other on the color wheel.



19.9961, 10.9237, -0.5242



19.9956, 10.1547, 4.5247



19.9961, 6.2113, 7.6285

Triad

The Triadic color harmony groups three colors that are evenly spaced from another and form a triangle on the color wheel.



19.9961, 10.1536, 4.5251



19.9961, -8.9132, 6.5454



19.9961, -2.6713, -12.1582

Complementary

The Complementary color scheme is a pair of colors which are on the opposite of each other on the color wheel.



19.9956, 10.1547, 4.5247



27.1600, -9.7849, -0.8624

Split Complementary

Split-complementary colors differ from the complementary color scheme. The scheme consists of three colors, the original color and two neighbors of the complement color.



19.9961, -7.4351, -8.8617



19.9956, 10.1547, 4.5247



19.9961, -10.7658, 2.5771

Square

The Square scheme is like the rectangle color scheme, but the four colors are evenly spaced on the color wheel.



19.9961, 10.1536, 4.5251



19.9961, -4.9047, 8.5480



19.9961, -10.2567, -3.0926



19.9961, 3.0817, -11.2060

Rectangle

The Rectangle color scheme consists of four colors that form a rectangle on the color wheel.



19.9956, 10.1547, 4.5247



19.9961, 2.5330, 8.6469



19.9961, -10.2567, -3.0926



19.9961, -4.4309, -11.4831

Sweetspot

The Sweet Spot groups the original color and five complimentary colors.



19.9961, 10.1536, 4.5251



34.3394, 2.3129, 3.0975



20.8857, 14.7108, -10.1043



16.8475, 1.3776, 1.5927



67.9972, -3.6282, 3.6944



19.0543, -1.0167, 1.0353

Same Dimension

The Same Dimension uses a secret algorithm to generate beautiful new colors.



19.9961, 10.1536, 4.5251



23.8514, 16.9886, 6.9573



23.7088, 2.5750, 8.1897



13.8043, 0.2898, 1.0538



17.2692, 29.6098, 10.8816



41.4462, 71.0110, 26.5251

Inverse Universe

The Inverse Universe completely reimagines the original color for something new.



19.9961, 10.1536, 4.5251



23.8514, 16.9886, 6.9573



22.5187, -2.7790, -7.7195



13.8043, 0.2898, 1.0538



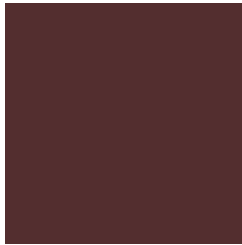
17.2692, 29.6098, 10.8816



41.4462, 71.0110, 26.5251

Previews

White Background



This preview shows how the HunterLab color 19.9956, 10.1547, 4.5247 looks on a white background.

Color Contrast Check

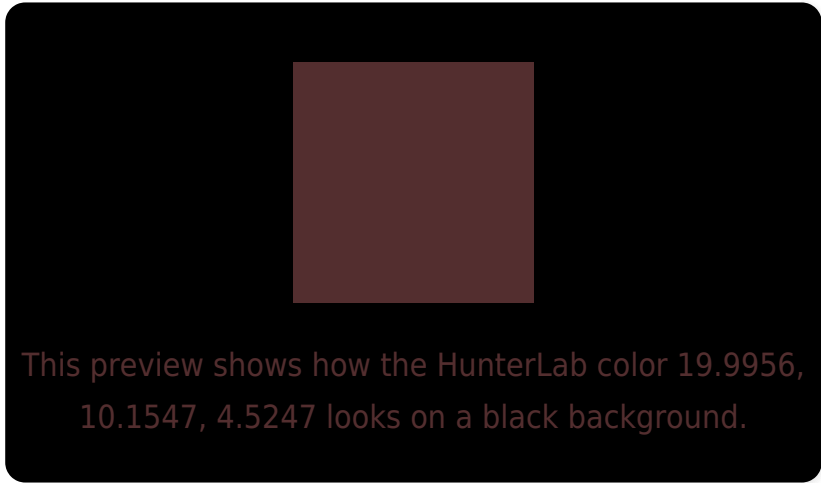
Large Text (above 18pt) WCAG AA ✓ Pass

Any Text WCAG AA ✓ Pass

Large Text (above 18pt) WCAG AAA ✓ Pass

Any Text WCAG AAA ✓ Pass

Black Background



Color Contrast Check

Large Text (above 18pt) WCAG AA × Fail

Any Text WCAG AA × Fail

Large Text (above 18pt) WCAG AAA × Fail

Any Text WCAG AAA × Fail

If you want to check with other color combinations, try the [Color Contrast Checker](#).

HunterLab 19.9956, 10.1547, 4.5247 Background



This preview shows how black text looks on a background with the HunterLab color 19.9956, 10.1547, 4.5247.



This preview shows how white text looks on a background with the HunterLab color 19.9956, 10.1547,

Color Blindness Simulation

Color vision deficiency is a very complex topic, and I could not describe the different causes any better than Wikipedia does, so if you want to learn more, you should check out their [article about color blindness](#).

Dichromacy



Original Color

19.9956, 10.1547, 4.5247

Protanopia

20.2583, -1.2065, 2.9537

Deuteranopia

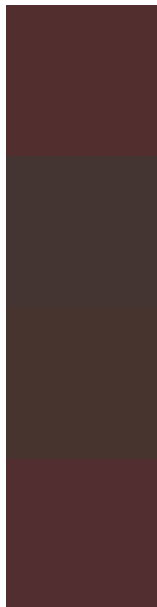
20.2185, 0.8684, 4.8940



Tritanopia

20.0368, 10.3574, 3.9297

Trichromacy



Original Color

19.9956, 10.1547, 4.5247

Protanomaly

20.0136, 2.7276, 3.4404

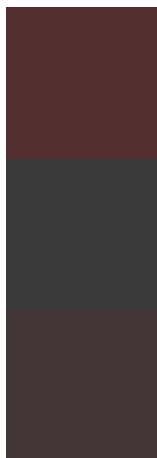
Deuteranomaly

20.0772, 3.9270, 4.8072

Tritanomaly

20.0160, 10.2550, 4.2302

Monochromacy



Original Color

19.9956, 10.1547, 4.5247

Achromatopsia

20.2275, -1.0793, 1.0990

Achromatomaly

19.9035, 2.4990, 2.2749

CSS Examples

Text

The CSS property to change the color of the text to HunterLab 19.9956, 10.1547, 4.5247 is called "color". The color property can be set on classes, ids or directly on the HTML element.

This example shows how text in the color `rgb(83, 46, 47)` looks like.

```
.text, #text, p{  
    color:rgb(83, 46, 47)  
}
```

If you want to add a text shadow in that color use the text-shadow property, you can generate a text shadow directly with our [CSS Text Shadow Generator](#).

Here you see how black text with a 4 pixel rgb(83, 46, 47) colored shadow looks like.

```
.shadow{ text-shadow: 4px 4px 2px rgb(83, 46, 47) }
```

Border

The CSS property to change the border of an element to HunterLab 19.9956, 10.1547, 4.5247 is called "border". The border property can be set on classes, ids or directly on the HTML element.

This example shows the color as border, it can be applied via the CSS property "border" or "border-color".

```
.border, #border, table{ border:4px solid rgb(83, 46, 47) }
```


If only the border color should be changed use the property `border-color`.

```
.border{ border-color:rgb(83, 46, 47) }
```

If you want to add a box shadow in that color use:

Here you see how a box with a 4 pixel `rgb(83, 46, 47)` colored shadow looks like.

```
.boxshadow{ -moz-box-shadow:4px 4px 4px  
4px rgb(83, 46, 47); -webkit-box-  
shadow:4px 4px 4px 4px rgb(83, 46, 47);  
box-shadow:4px 4px 4px 4px rgb(83, 46, 47)  
}
```

Background

The CSS property to change the background color of an element to HunterLab 19.9956, 10.1547, 4.5247 is called "background". The background property can be set on classes, ids or directly on the HTML element.

```
.background, #background, body{  
background: rgb(83, 46, 47) }
```

If only the background color should be changed can be used:

```
.background{ background-color: rgb(83, 46,  
47) }
```

This example shows the color as background, it is applied via the CSS property "background".

To optimize and compress your CSS code, you can use our [online CSS compressor and optimizer](#) based on csstidy. If you want to create a linear or radial gradient as background or border, check our [CSS Gradient Generator](#).

Hey! You found this booklet interesting? Support Converting Colors with the new Membership Option!

The pro membership hides all ads, plus gives you double the colors in the color bucket, and more awesome pro features!

[Learn more, Memberships starting at \\$2.50/m!](#)

**Follow me
on Twitter!**

@ConvertingColor