

Converting Colors

HunterLab(20.1035, -0.4826,
6.0620)

Have a look what the booklet for
HunterLab(20.1035, -0.4826, 6.0620)
contains.

HunterLab(20.1951, -0.6160, 6.2745)	3
<i>Conversions</i>	4
<i>Details</i>	6
<i>Harmonies</i>	12
<i>Previews</i>	24
<i>Color Blindness Simulation</i>	28
<i>CSS Examples</i>	31

Color

**HunterLab(20.1951, -0.6160,
6.2745)**

Conversions

Conversions Part 1

Format	Color
Hex	403829
RGB	64, 56, 41
RGB Percent	25%, 22%, 16%
CMY	0.7490, 0.7804, 0.8392
CMYK	0.00, 0.12, 0.36, 0.75
HSL	39°, 22%, 21%
HSV	39°, 36%, 25%
XYZ	3.9288, 4.0784, 2.6779
YIQ	56.6820, 9.5830, -2.9690

Conversions

Conversions Part 2

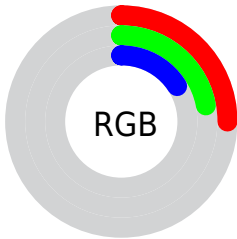
Format	Color
R_{YB}	53, 64, 41
Decimal	4208681
CIE Lab	23.93, 0.77, 10.68
CIE LCh	24, 10.709, 85.876
Yxy	4.0786, 0.3677, 0.3817
Android (android.graphics.Color)	4282398761 (0xFF403829)
YUV	56.6820, -7.7312, 6.4179
Hunter-Lab	20.1951, -0.6160, 6.2745

Details

The HunterLab color **20.1951, -0.6160, 6.2745** is a dark color, and the websafe version is hex **333333**. A complement of this color would be **17.4302, -0.4137, -5.7662**, and the grayscale version is **20.1425, -1.0748, 1.0944**.

A 20% lighter version of the original color is **37.1714, -1.6046, 8.8338**, and **6.6879, 0.3917, 4.1279** is the 20% darker color. If you saturate the color by 10%, you get **19.5615, -0.2819, 7.3230**, and if you desaturate by 10%, it is **20.8508, -0.8750, 5.0647**.

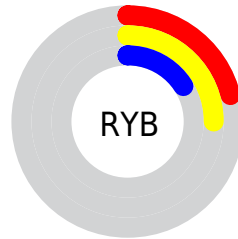
Distribution



Red (25%)

Green (22%)

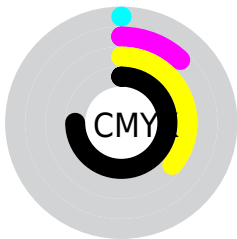
Blue (16%)



Red (21%)

Yellow (25%)

Blue (16%)

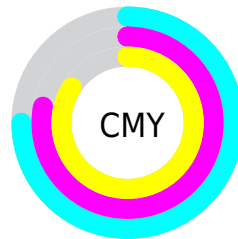


Cyan (0%)

Magenta (12%)

Yellow (36%)

Black (75%)



Cyan (75%)

Magenta (78%)

Yellow (84%)

Brightness & Saturation Gradients

These gradients show how the HunterLab color 20.1951, -0.6160, 6.2745 changes by changing the brightness by 10 percent. The first figure shows a shift by +10% for each color and the second figure -10%.

Similar to the brightness gradients but the following saturation gradients show a change of the HunterLab color 20.1951, -0.6160, 6.2745 by changing the saturation by 10% instead.

■ 20.1951, -0.6160,
6.2745

■ 20.1951, -0.6160,
6.2745

■ 118.5428, -5.5007,
16.8853

■ 13.1058, -0.2994,
4.9563

■ 37.1343, -1.4182,
8.7135

■ 6.5957, 0.1565,
4.6170

■ 46.8064, -1.8898,
9.8879

0.0000, NaN, NaN

0.0000, NaN, NaN

■ 57.1972, -2.4028,
11.0507

0.0000, NaN, NaN

■ 68.2601, -2.9543,
12.2095

0.0000, NaN, NaN

■ 79.9566, -3.5417,
13.3692

0.0000, NaN, NaN

0.0000, NaN, NaN

■ 92.2540, -4.1630,

14.5336

0.0000, NaN, NaN

105.1242, -4.8165,
15.7050

20.1951, -0.6160,
6.2745

20.1951, -0.6160,
6.2745

19.5615, -0.2819,
7.3230

20.8508, -0.8750,
5.0647

18.9495, 0.1315,
8.2021

21.5264, -1.0594,
3.7009

18.3604, 0.6247,
8.9058

22.2214, -1.1730,
2.1917

17.7949, 1.1981,
9.4300

22.9349, -1.2188,
0.5453

17.2535, 1.8494,
9.7758

23.6661, -1.2003,
-1.2298

■ 16.7271, 2.5254,
10.0867

■ 24.4141, -1.1207,
-3.1259

■ 16.5160, 2.7987,
10.2261

■ 25.1783, -0.9834,
-5.1353

■ 25.9577, -0.7915,
-7.2509

■ 26.7518, -0.5482,
-9.4658

Harmonies

Analogous

The Analogous color harmony consists of three colors that are next to each other on the color wheel.



20.1956, 2.6359, 5.5151



20.1951, -0.6160, 6.2745



20.1956, -3.7948, 5.8429

Triad

The Triadic color harmony groups three colors that are evenly spaced from another and form a triangle on the color wheel.



20.1956, -0.6167, 6.2748



20.1956, -6.5169, -1.7403



20.1956, 4.4932, -2.6202

Complementary

The Complementary color scheme is a pair of colors which are on the opposite of each other on the color wheel.



20.1951, -0.6160, 6.2745



17.4302, -0.4137, -5.7662

Split Complementary

Split-complementary colors differ from the complementary color scheme. The scheme consists of three colors, the original color and two neighbors of the complement color.



20.1956, 1.7890, -5.1766



20.1951, -0.6160, 6.2745



20.1956, -4.5427, -4.6136

Square

The Square scheme is like the rectangle color scheme, but the four colors are evenly spaced on the color wheel.



20.1956, -0.6167, 6.2748



20.1956, -7.0701, 1.5319



20.1956, -1.5365, -5.9591



20.1956, 5.7045, 0.6569

Rectangle

The Rectangle color scheme consists of four colors that form a rectangle on the color wheel.



20.1951, -0.6160, 6.2745



20.1956, -5.4677, 4.8929



20.1956, -1.5365, -5.9591



20.1956, 3.7205, -3.6117

Sweetspot

The Sweet Spot groups the original color and five complimentary colors.



20.1956, -0.6167, 6.2748



28.7626, -1.4734, 4.0153



17.0237, 6.5167, 0.4646



15.0741, -0.7694, 2.1573



63.7533, -3.4017, 3.4638



15.6573, -0.8354, 0.8507

Same Dimension

The Same Dimension uses a secret algorithm to generate beautiful new colors.



20.1956, -0.6167, 6.2748



25.8529, -0.4202, 9.5187



21.9198, -4.7234, 7.7498



12.0482, -0.6286, 1.4227



24.7252, 5.1572, 15.3258



60.4824, 15.7469, 37.5446

Inverse Universe

The Inverse Universe completely reimagines the original color for something new.



17.4302, -0.4137, -5.7662



21.3530, -0.0162, -10.2175



15.8163, 3.6567, -8.3729



11.6770, -0.6097, -0.1771



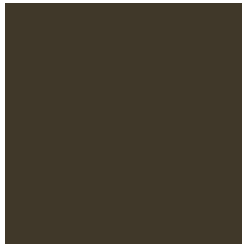
14.0998, 9.7146, -38.5945



32.9508, 30.2885, -106.5698

Previews

White Background



This preview shows how the HunterLab color 20.1951, -0.6160, 6.2745 looks on a white background.

Color Contrast Check

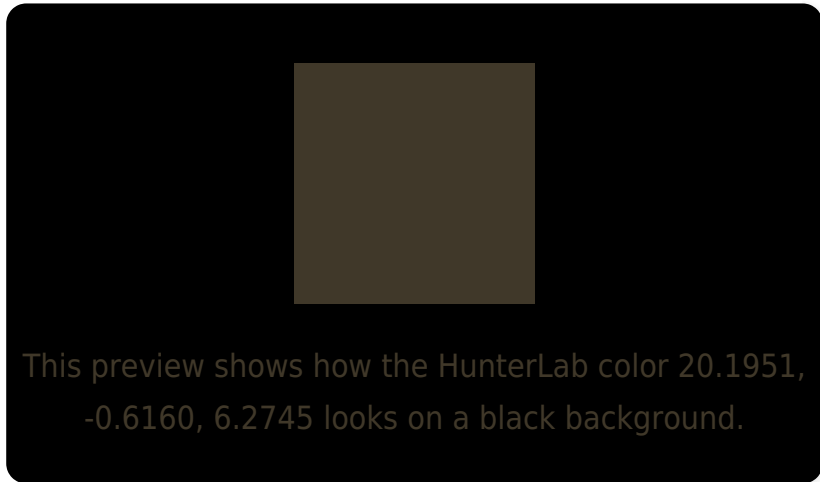
Large Text (above 18pt) WCAG AA ✓ Pass

Any Text WCAG AA ✓ Pass

Large Text (above 18pt) WCAG AAA ✓ Pass

Any Text WCAG AAA ✓ Pass

Black Background



Color Contrast Check

Large Text (above 18pt) WCAG AA × Fail

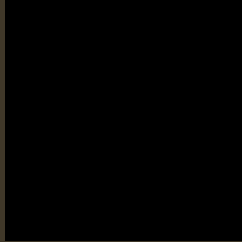
Any Text WCAG AA × Fail

Large Text (above 18pt) WCAG AAA × Fail

Any Text WCAG AAA × Fail

If you want to check with other color combinations, try the [Color Contrast Checker](#).

HunterLab 20.1951, -0.6160, 6.2745 Background



This preview shows how black text looks on a background with the HunterLab color 20.1951, -0.6160, 6.2745.

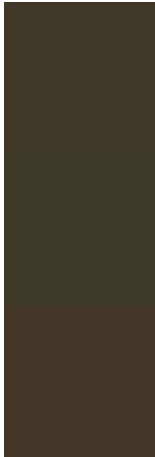


This preview shows how white text looks on a background with the HunterLab color 20.1951, -0.6160,

Color Blindness Simulation

Color vision deficiency is a very complex topic, and I could not describe the different causes any better than Wikipedia does, so if you want to learn more, you should check out their [article about color blindness](#).

Dichromacy



Original Color

20.1951, -0.6160, 6.2745

Protanopia

20.1952, -1.8618, 6.2527

Deuteranopia

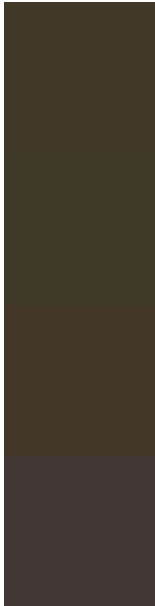
20.3013, 0.9647, 6.3997



Tritanopia

20.2536, 2.7146, 0.8094

Trichromacy



Original Color

20.1951, -0.6160, 6.2745

Protanomaly

20.2743, -1.5840, 6.3304

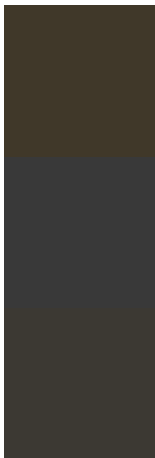
Deuteranomaly

20.2133, 0.6669, 6.3136

Tritanomaly

20.2586, 1.2542, 2.9971

Monochromacy



Original Color

20.1951, -0.6160, 6.2745

Achromatopsia

20.2275, -1.0793, 1.0990

Achromatomaly

20.3124, -1.0623, 3.3559

CSS Examples

Text

The CSS property to change the color of the text to HunterLab 20.1951, -0.6160, 6.2745 is called "color". The color property can be set on classes, ids or directly on the HTML element.

This example shows how text in the color `rgb(64, 56, 41)` looks like.

```
.text, #text, p{  
    color:rgb(64, 56, 41)  
}
```

If you want to add a text shadow in that color use the text-shadow property, you can generate a text shadow directly with our [CSS Text Shadow Generator](#).

Here you see how black text with a 4 pixel rgb(64, 56, 41) colored shadow looks like.

```
.shadow{ text-shadow: 4px 4px 2px rgb(64, 56, 41) }
```

Border

The CSS property to change the border of an element to HunterLab 20.1951, -0.6160, 6.2745 is called "border". The border property can be set on classes, ids or directly on the HTML element.

This example shows the color as border, it can be applied via the CSS property "border" or "border-color".

```
.border, #border, table{ border:4px solid rgb(64, 56, 41) }
```


If only the border color should be changed use the property `border-color`.

```
.border{ border-color:rgb(64, 56, 41) }
```

If you want to add a box shadow in that color use:

Here you see how a box with a 4 pixel `rgb(64, 56, 41)` colored shadow looks like.

```
.boxshadow{ -moz-box-shadow:4px 4px 4px  
4px rgb(64, 56, 41); -webkit-box-  
shadow:4px 4px 4px 4px rgb(64, 56, 41);  
box-shadow:4px 4px 4px 4px rgb(64, 56, 41)  
}
```

Background

The CSS property to change the background color of an element to HunterLab 20.1951, -0.6160, 6.2745 is called "background". The background property can be set on classes, ids or directly on the HTML element.

```
.background, #background, body{  
background: rgb(64, 56, 41) }
```

If only the background color should be changed can be used:

```
.background{ background-color: rgb(64, 56,  
41) }
```

This example shows the color as background, it is applied via the CSS property "background".

To optimize and compress your CSS code, you can use our [online CSS compressor and optimizer](#) based on csstidy. If you want to create a linear or radial gradient as background or border, check our [CSS Gradient Generator](#).

Hey! You found this booklet interesting? Support Converting Colors with the new Membership Option!

The pro membership hides all ads, plus gives you double the colors in the color bucket, and more awesome pro features!

[Learn more, Memberships starting at \\$2.50/m!](#)

**Follow me
on Twitter!**

@ConvertingColor