

Converting Colors

HunterLab(20.1223, 4.0031,
7.7839)

Have a look what the booklet for
HunterLab(20.1223, 4.0031, 7.7839)
contains.

HunterLab(20.1821, 3.8888, 7.8329)	3
<i>Conversions</i>	4
<i>Details</i>	6
<i>Harmonies</i>	12
<i>Previews</i>	24
<i>Color Blindness Simulation</i>	28
<i>CSS Examples</i>	31

Color

**HunterLab(20.1821, 3.8888,
7.8329)**

Conversions

Conversions Part 1

Format	Color
Hex	4B3423
RGB	75, 52, 35
RGB Percent	29%, 20%, 14%
CMY	0.7059, 0.7961, 0.8627
CMYK	0.00, 0.31, 0.53, 0.71
HSL	26°, 36%, 22%
HSV	26°, 53%, 29%
XYZ	4.4330, 4.0732, 2.1426
YIQ	56.9390, 19.1650, -0.4110

Conversions

Conversions Part 2

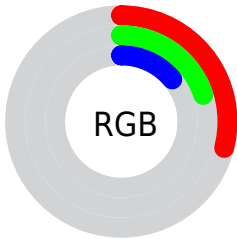
Format	Color
RYB	75, 65, 35
Decimal	4928547
CIELab	23.91, 7.94, 14.82
CIElCh	24, 16.813, 61.804
Yxy	4.0734, 0.4163, 0.3825
Android (android.graphics.Color)	4283118627 (0xFF4B3423)
YUV	56.9390, -10.8159, 15.8395
Hunter-Lab	20.1821, 3.8888, 7.8329

Details

The HunterLab color **20.1821, 3.8888, 7.8329** is a dark color, and the websafe version is hex **663333**. A complement of this color would be **19.7262, -3.0661, -7.9057**, and the grayscale version is **20.2382, -1.0799, 1.0996**.

A 20% lighter version of the original color is **36.9791, 4.1836, 10.6912**, and **6.5420, 5.2337, 4.1228** is the 20% darker color. If you saturate the color by 10%, you get **19.1467, 5.1792, 8.5830**, and if you desaturate by 10%, it is **21.2733, 2.6953, 6.9190**.

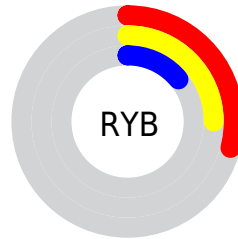
Distribution



Red (29%)

Green (20%)

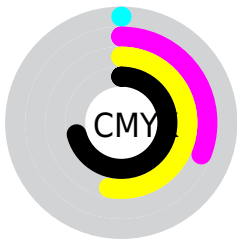
Blue (14%)



Red (29%)

Yellow (25%)

Blue (14%)

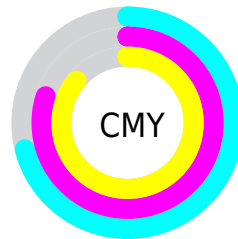


Cyan (0%)

Magenta (31%)

Yellow (53%)

Black (71%)



Cyan (71%)

Magenta (80%)

Yellow (86%)

Brightness & Saturation Gradients

These gradients show how the HunterLab color 20.1821, 3.8888, 7.8329 changes by changing the brightness by 10 percent. The first figure shows a shift by +10% for each color and the second figure -10%.

Similar to the brightness gradients but the following saturation gradients show a change of the HunterLab color 20.1821, 3.8888, 7.8329 by changing the saturation by 10% instead.

■ 20.1821, 3.8888,
7.8329

■ 20.1821, 3.8888,
7.8329

■ 118.5194, 2.3496,
20.6542

■ 13.0946, 3.6653,
6.2638

■ 37.1184, 4.0097,
10.9242

■ 6.5813, 4.9082,
4.6069

■ 46.7892, 3.9458,
12.3733

0.0000, NaN, NaN

0.0000, NaN, NaN

■ 57.1788, 3.8139,
13.7873

0.0000, NaN, NaN

■ 68.2407, 3.6216,
15.1785

0.0000, NaN, NaN

■ 79.9361, 3.3748,
16.5555

0.0000, NaN, NaN

0.0000, NaN, NaN

■ 92.2325, 3.0781,

17.9244

0.0000, NaN, NaN

105.1017, 2.7353,
19.2895

20.1821, 3.8888,
7.8329

20.1821, 3.8888,
7.8329

19.1467, 5.1792,
8.5830

21.2733, 2.6953,
6.9190

18.1706, 6.5681,
9.1521

22.4140, 1.5996,
5.8570

17.2598, 8.0480,
9.5256

23.6004, 0.5965,
4.6631

16.4147, 9.5830,
9.7638

24.8287, -0.3194,
3.3514

15.8819, 10.5872,
9.9717

26.0953, -1.1541,
1.9347

■ 27.3971, -1.9139,
0.4242

■ 28.7315, -2.6048,
-1.1703

■ 30.0959, -3.2327,
-2.8403

■ 31.4881, -3.8030,
-4.5785

Harmonies

Analogous

The Analogous color harmony consists of three colors that are next to each other on the color wheel.



20.1826, 8.1823, 5.5114



20.1821, 3.8888, 7.8329



20.1826, -1.3931, 8.5027

Triad

The Triadic color harmony groups three colors that are evenly spaced from another and form a triangle on the color wheel.



20.1826, 3.8879, 7.8332



20.1826, -10.1641, 0.7956



20.1826, 4.4902, -8.8196

Complementary

The Complementary color scheme is a pair of colors which are on the opposite of each other on the color wheel.



20.1821, 3.8888, 7.8329



19.7262, -3.0661, -7.9057

Split Complementary

Split-complementary colors differ from the complementary color scheme. The scheme consists of three colors, the original color and two neighbors of the complement color.



20.1826, -0.7609, -10.9676



20.1821, 3.8888, 7.8329



20.1826, -8.9209, -4.6104

Square

The Square scheme is like the rectangle color scheme, but the four colors are evenly spaced on the color wheel.



20.1826, 3.8879, 7.8332



20.1826, -9.1858, 5.1100



20.1826, -5.6058, -9.2609



20.1826, 8.5541, -3.9547

Rectangle

The Rectangle color scheme consists of four colors that form a rectangle on the color wheel.



20.1821, 3.8888, 7.8329



20.1826, -4.6732, 8.1062



20.1826, -5.6058, -9.2609



20.1826, 2.7880, -9.9319

Sweetspot

The Sweet Spot groups the original color and five complimentary colors.



20.1826, 3.8879, 7.8332



31.8011, -0.0393, 4.9358



17.3402, 13.6605, -2.9155



15.8956, 0.0335, 2.5564



65.8695, -3.5146, 3.5788



17.3419, -0.9253, 0.9422

Same Dimension

The Same Dimension uses a secret algorithm to generate beautiful new colors.



20.1826, 3.8879, 7.8332



24.5360, 7.2783, 11.4258



24.9177, -4.2000, 11.4970



13.4150, -0.3785, 1.4281



21.3974, 15.5801, 13.4577



50.3901, 42.1709, 31.7884

Inverse Universe

The Inverse Universe completely reimagines the original color for something new.



19.7262, -3.0661, -7.9057



23.8006, -3.6547, -13.5099



15.0764, 5.1923, -16.7968



13.3745, -1.0154, 0.0005



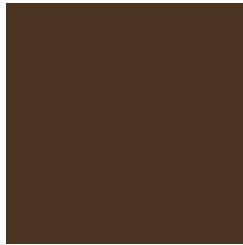
20.1267, -0.2428, -24.6325



47.0896, 2.7212, -64.7322

Previews

White Background



This preview shows how the HunterLab color 20.1821, 3.8888, 7.8329 looks on a white background.

Color Contrast Check

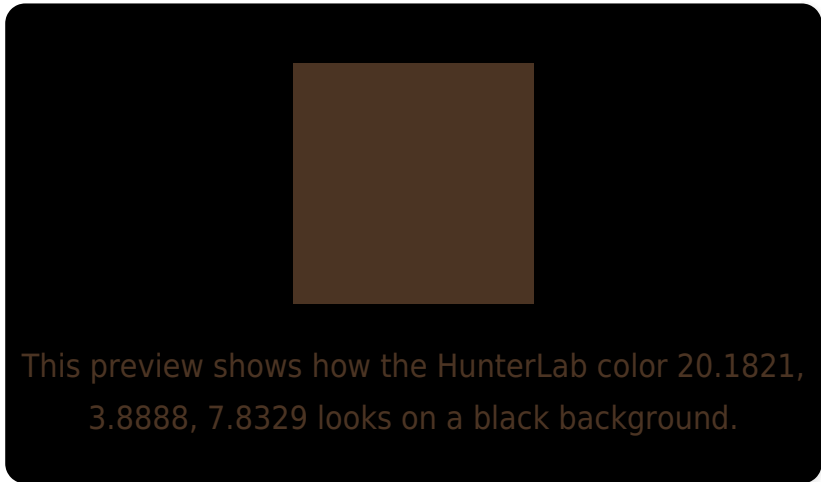
Large Text (above 18pt) WCAG AA ✓ Pass

Any Text WCAG AA ✓ Pass

Large Text (above 18pt) WCAG AAA ✓ Pass

Any Text WCAG AAA ✓ Pass

Black Background



Color Contrast Check

Large Text (above 18pt) WCAG AA × Fail

Any Text WCAG AA × Fail

Large Text (above 18pt) WCAG AAA × Fail

Any Text WCAG AAA × Fail

If you want to check with other color combinations, try the [Color Contrast Checker](#).

HunterLab 20.1821, 3.8888, 7.8329 Background



This preview shows how black text looks on a background with the HunterLab color 20.1821, 3.8888, 7.8329.

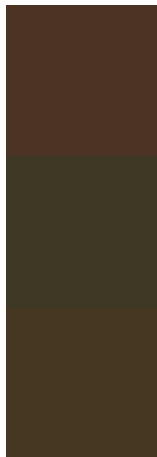


This preview shows how white text looks on a background with the HunterLab color 20.1821, 3.8888,

Color Blindness Simulation

Color vision deficiency is a very complex topic, and I could not describe the different causes any better than Wikipedia does, so if you want to learn more, you should check out their [article about color blindness](#).

Dichromacy



Original Color

20.1821, 3.8888, 7.8329

Protanopia

20.2088, -1.9451, 7.2835

Deuteranopia

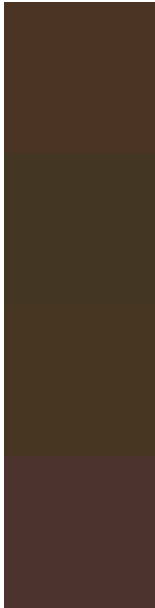
20.2807, 0.6754, 8.0844



Tritanopia

20.1860, 6.7987, 2.6646

Trichromacy



Original Color

20.1821, 3.8888, 7.8329

Protanomaly

20.1322, 0.2287, 7.4939

Deuteranomaly

20.2322, 1.7052, 8.0619

Tritanomaly

20.2519, 5.6098, 5.0101

Monochromacy



Original Color

20.1821, 3.8888, 7.8329

Achromatopsia

20.2275, -1.0793, 1.0990

Achromatomaly

20.1100, 0.6222, 3.8357

CSS Examples

Text

The CSS property to change the color of the text to HunterLab 20.1821, 3.8888, 7.8329 is called "color". The color property can be set on classes, ids or directly on the HTML element.

This example shows how text in the color `rgb(75, 52, 35)` looks like.

```
.text, #text, p{  
    color:rgb(75, 52, 35)  
}
```

If you want to add a text shadow in that color use the text-shadow property, you can generate a text shadow directly with our [CSS Text Shadow Generator](#).

Here you see how black text with a 4 pixel rgb(75, 52, 35) colored shadow looks like.

```
.shadow{ text-shadow: 4px 4px 2px rgb(75, 52, 35) }
```

Border

The CSS property to change the border of an element to HunterLab 20.1821, 3.8888, 7.8329 is called "border". The border property can be set on classes, ids or directly on the HTML element.

This example shows the color as border, it can be applied via the CSS property "border" or "border-color".

```
.border, #border, table{ border:4px solid rgb(75, 52, 35) }
```


If only the border color should be changed use the property `border-color`.

```
.border{ border-color:rgb(75, 52, 35) }
```

If you want to add a box shadow in that color use:

Here you see how a box with a 4 pixel `rgb(75, 52, 35)` colored shadow looks like.

```
.boxshadow{ -moz-box-shadow:4px 4px 4px  
4px rgb(75, 52, 35); -webkit-box-  
shadow:4px 4px 4px 4px rgb(75, 52, 35);  
box-shadow:4px 4px 4px 4px rgb(75, 52, 35)  
}
```

Background

The CSS property to change the background color of an element to HunterLab 20.1821, 3.8888, 7.8329 is called "background". The background property can be set on classes, ids or directly on the HTML element.

```
.background, #background, body{  
background: rgb(75, 52, 35) }
```

If only the background color should be changed can be used:

```
.background{ background-color: rgb(75, 52,  
35) }
```

This example shows the color as background, it is applied via the CSS property "background".

To optimize and compress your CSS code, you can use our [online CSS compressor and optimizer](#) based on csstidy. If you want to create a linear or radial gradient as background or border, check our [CSS Gradient Generator](#).

Hey! You found this booklet interesting? Support Converting Colors with the new Membership Option!

The pro membership hides all ads, plus gives you double the colors in the color bucket, and more awesome pro features!

[Learn more, Memberships starting at \\$2.50/m!](#)

**Follow me
on Twitter!**

@ConvertingColor