

Converting Colors

HunterLab(20.2327, 1.8933,
6.6177)

Have a look what the booklet for
HunterLab(20.2327, 1.8933, 6.6177)
contains.

HunterLab(20.2327, 1.8933, 6.6177)	3
<i>Conversions</i>	4
<i>Details</i>	6
<i>Harmonies</i>	12
<i>Previews</i>	24
<i>Color Blindness Simulation</i>	28
<i>CSS Examples</i>	31

Color

**HunterLab(20.2327, 1.8933,
6.6177)**

Conversions

Conversions Part 1

Format	Color
Hex	463628
RGB	70, 54, 40
RGB Percent	27%, 21%, 16%
CMY	0.7255, 0.7882, 0.8431
CMYK	0.00, 0.23, 0.43, 0.73
HSL	28°, 27%, 22%
HSV	28°, 43%, 27%
XYZ	4.2280, 4.0936, 2.5748
YIQ	57.1880, 14.0300, -0.9620

Conversions

Conversions Part 2

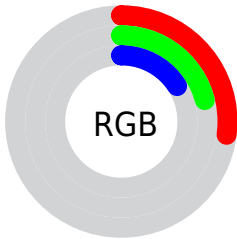
Format	Color
R_YB	70, 66, 40
Decimal	4601384
CIE Lab	23.98, 4.84, 11.52
CIE LCh	24, 12.497, 67.224
Yxy	4.0938, 0.3880, 0.3757
Android (android.graphics.Color)	4282791464 (0xFF463628)
YUV	57.1880, -8.4737, 11.2361
Hunter-Lab	20.2327, 1.8933, 6.6177

Details

The HunterLab color **20.2327, 1.8933, 6.6177** is a dark color, and the websafe version is hex **333333**. A complement of this color would be **19.2913, -2.3491, -5.9623**, and the grayscale version is **20.3168, -1.0841, 1.1039**.

A 20% lighter version of the original color is **37.2628, 1.3806, 9.3106**, and **6.6083, 2.8743, 4.1223** is the 20% darker color. If you saturate the color by 10%, you get **19.2774, 2.8625, 7.5033**, and if you desaturate by 10%, it is **21.2292, 1.0107, 5.5880**.

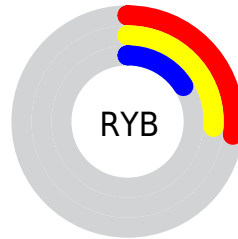
Distribution



Red (27%)

Green (21%)

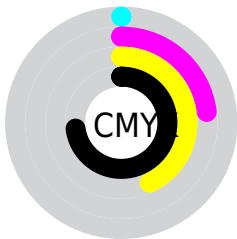
Blue (16%)



Red (27%)

Yellow (26%)

Blue (16%)

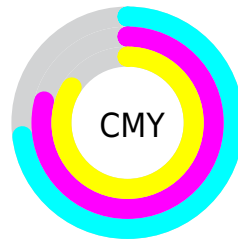


Cyan (0%)

Magenta (23%)

Yellow (43%)

Black (73%)



Cyan (73%)

Magenta (79%)

Yellow (84%)

Brightness & Saturation Gradients

These gradients show how the HunterLab color 20.2327, 1.8933, 6.6177 changes by changing the brightness by 10 percent. The first figure shows a shift by +10% for each color and the second figure -10%.

Similar to the brightness gradients but the following saturation gradients show a change of the HunterLab color 20.2327, 1.8933, 6.6177 by changing the saturation by 10% instead.

■ 20.2327, 1.8933,
6.6177

■ 20.2327, 1.8933,
6.6177

■ 118.6107, -1.0768,
17.6709

■ 13.1384, 1.8968,
5.2282

■ 37.1804, 1.6222,
9.1866

■ 6.6372, 2.8218,
4.6460

■ 46.8561, 1.3842,
10.4158

0.0000, NaN, NaN

0.0000, NaN, NaN

■ 57.2504, 1.0892,
11.6289

0.0000, NaN, NaN

■ 68.3166, 0.7430,
12.8342

0.0000, NaN, NaN

■ 80.0161, 0.3500,
14.0376

0.0000, NaN, NaN

0.0000, NaN, NaN

■ 92.3164, -0.0862,

15.2430

0.0000, NaN, NaN

105.1894, -0.5626,
16.4534

20.2327, 1.8933,
6.6177

20.2327, 1.8933,
6.6177

19.2774, 2.8625,
7.5033

21.2292, 1.0107,
5.5880

18.3652, 3.9232,
8.2301

22.2623, 0.2130,
4.4266

17.5002, 5.0748,
8.7850

23.3296, -0.5053,
3.1466

16.6862, 6.3145,
9.1565

24.4286, -1.1494,
1.7591

15.9219, 7.6105,
9.4095

25.5568, -1.7246,
0.2747

■ 15.4000, 8.5244,
9.6387

■ 26.7122, -2.2362,
-1.2976

■ 27.8929, -2.6892,
-2.9496

■ 29.0971, -3.0881,
-4.6742

■ 30.3234, -3.4374,
-6.4651

Harmonies

Analogous

The Analogous color harmony consists of three colors that are next to each other on the color wheel.



20.2332, 5.2164, 4.9451



20.2327, 1.8933, 6.6177



20.2332, -2.0114, 6.9578

Triad

The Triadic color harmony groups three colors that are evenly spaced from another and form a triangle on the color wheel.



20.2332, 1.8925, 6.6180



20.2332, -7.9697, 0.1874



20.2332, 3.6385, -5.4119

Complementary

The Complementary color scheme is a pair of colors which are on the opposite of each other on the color wheel.



20.2327, 1.8933, 6.6177



19.2913, -2.3491, -5.9623

Split Complementary

Split-complementary colors differ from the complementary color scheme. The scheme consists of three colors, the original color and two neighbors of the complement color.



20.2332, -0.1329, -7.2907



20.2327, 1.8933, 6.6177



20.2332, -6.6909, -3.6852

Square

The Square scheme is like the rectangle color scheme, but the four colors are evenly spaced on the color wheel.



20.2332, 1.8925, 6.6180



20.2332, -7.5167, 3.6632



20.2332, -3.8915, -6.6054



20.2332, 6.2763, -1.8466

Rectangle

The Rectangle color scheme consists of four colors that form a rectangle on the color wheel.



20.2327, 1.8933, 6.6177



20.2332, -4.3853, 6.4551



20.2332, -3.8915, -6.6054



20.2332, 2.4506, -6.2895

Sweetspot

The Sweet Spot groups the original color and five complimentary colors.



20.2332, 1.8925, 6.6180



30.6726, -0.6051, 4.2695



17.6217, 9.6642, -1.5608



15.4170, -0.2518, 2.2612



64.8100, -3.4581, 3.5212



16.4960, -0.8802, 0.8963

Same Dimension

The Same Dimension uses a secret algorithm to generate beautiful new colors.



20.2332, 1.8925, 6.6180



25.3945, 3.8087, 9.9226



23.8988, -4.2023, 9.6723



12.6772, -0.4194, 1.3699



21.5979, 13.3474, 13.5422



51.5896, 37.0768, 32.4384

Inverse Universe

The Inverse Universe completely reimagines the original color for something new.



19.2913, -2.3491, -5.9623



23.8760, -2.9715, -10.3695



15.7456, 3.8875, -12.0482



12.5726, -0.8963, -0.0267



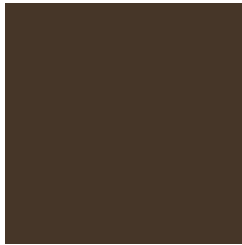
18.5980, 1.5104, -26.5064



43.8460, 7.5362, -71.0723

Previews

White Background



This preview shows how the HunterLab color 20.2327, 1.8933, 6.6177 looks on a white background.

Color Contrast Check

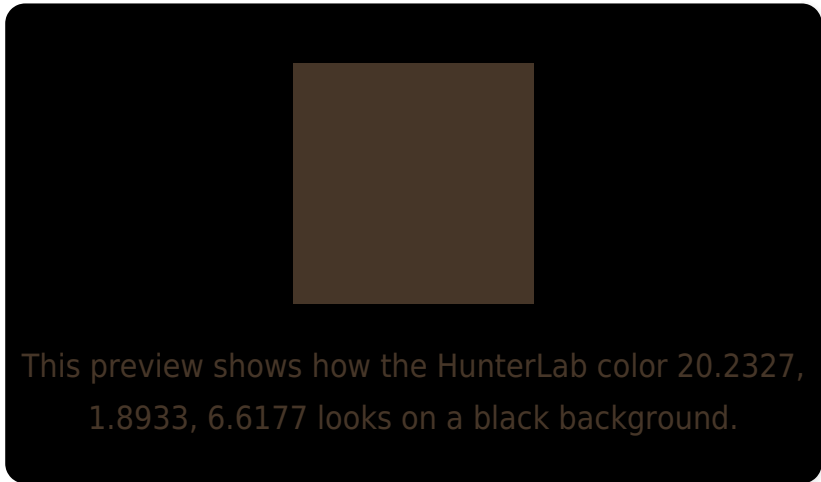
Large Text (above 18pt) WCAG AA ✓ Pass

Any Text WCAG AA ✓ Pass

Large Text (above 18pt) WCAG AAA ✓ Pass

Any Text WCAG AAA ✓ Pass

Black Background



Color Contrast Check

Large Text (above 18pt) WCAG AA × Fail

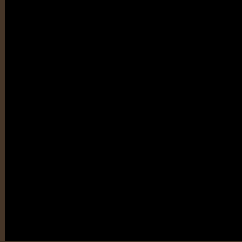
Any Text WCAG AA × Fail

Large Text (above 18pt) WCAG AAA × Fail

Any Text WCAG AAA × Fail

If you want to check with other color combinations, try the [Color Contrast Checker](#).

HunterLab 20.2327, 1.8933, 6.6177 Background



This preview shows how black text looks on a background with the HunterLab color 20.2327, 1.8933, 6.6177.

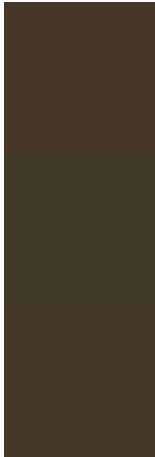


This preview shows how white text looks on a background with the HunterLab color 20.2327, 1.8933,

Color Blindness Simulation

Color vision deficiency is a very complex topic, and I could not describe the different causes any better than Wikipedia does, so if you want to learn more, you should check out their [article about color blindness](#).

Dichromacy



Original Color

20.2327, 1.8933, 6.6177

Protanopia

20.2743, -1.5840, 6.3304

Deuteranopia

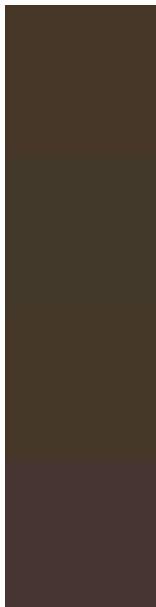
20.2843, 0.8733, 6.6466



Tritanopia

20.2959, 5.0644, 1.6652

Trichromacy



Original Color

20.2327, 1.8933, 6.6177

Protanomaly

20.2787, -0.3278, 6.3564

Deuteranomaly

20.3735, 1.1743, 6.7325

Tritanomaly

20.2881, 3.6247, 3.7463

Monochromacy



Original Color

20.2327, 1.8933, 6.6177

Achromatopsia

20.2275, -1.0793, 1.0990

Achromatomaly

20.2274, -0.1143, 3.2817

CSS Examples

Text

The CSS property to change the color of the text to HunterLab 20.2327, 1.8933, 6.6177 is called "color". The color property can be set on classes, ids or directly on the HTML element.

This example shows how text in the color `rgb(70, 54, 40)` looks like.

```
.text, #text, p{  
    color:rgb(70, 54, 40)  
}
```

If you want to add a text shadow in that color use the text-shadow property, you can generate a text shadow directly with our [CSS Text Shadow Generator](#).

Here you see how black text with a 4 pixel rgb(70, 54, 40) colored shadow looks like.

```
.shadow{ text-shadow: 4px 4px 2px rgb(70, 54, 40) }
```

Border

The CSS property to change the border of an element to HunterLab 20.2327, 1.8933, 6.6177 is called "border".

The border property can be set on classes, ids or directly on the HTML element.

This example shows the color as border, it can be applied via the CSS property "border" or "border-color".

```
.border, #border, table{ border:4px solid rgb(70, 54, 40) }
```


If only the border color should be changed use the property `border-color`.

```
.border{ border-color:rgb(70, 54, 40) }
```

If you want to add a box shadow in that color use:

Here you see how a box with a 4 pixel `rgb(70, 54, 40)` colored shadow looks like.

```
.boxshadow{ -moz-box-shadow:4px 4px 4px  
4px rgb(70, 54, 40); -webkit-box-  
shadow:4px 4px 4px 4px rgb(70, 54, 40);  
box-shadow:4px 4px 4px 4px rgb(70, 54, 40)  
}
```

Background

The CSS property to change the background color of an element to HunterLab 20.2327, 1.8933, 6.6177 is called "background". The background property can be set on classes, ids or directly on the HTML element.

```
.background, #background, body{  
background: rgb(70, 54, 40) }
```

If only the background color should be changed can be used:

```
.background{ background-color: rgb(70, 54,  
40) }
```

This example shows the color as background, it is applied via the CSS property "background".

To optimize and compress your CSS code, you can use our [online CSS compressor and optimizer](#) based on csstidy. If you want to create a linear or radial gradient as background or border, check our [CSS Gradient Generator](#).

Hey! You found this booklet interesting? Support Converting Colors with the new Membership Option!

The pro membership hides all ads, plus gives you double the colors in the color bucket, and more awesome pro features!

[Learn more, Memberships starting at \\$2.50/m!](#)

**Follow me
on Twitter!**

@ConvertingColor