

Converting Colors

HunterLab(20.2995, 12.6671,
7.2745)

Have a look what the booklet for
HunterLab(20.2995, 12.6671,
7.2745) contains.

| | |
|--|----|
| HunterLab(20.2854, 12.6070, 7.3609) | 3 |
| <i>Conversions</i> | 4 |
| <i>Details</i> | 6 |
| <i>Harmonies</i> | 12 |
| <i>Previews</i> | 24 |
| <i>Color Blindness Simulation</i> | 28 |
| <i>CSS Examples</i> | 31 |

Color

**HunterLab(20.2854, 12.6070,
7.3609)**

Conversions

Conversions Part 1

| Format | Color |
|---------------|--------------------------|
| Hex | 5A2C26 |
| RGB | 90, 44, 38 |
| RGB Percent | 35%, 17%, 15% |
| CMY | 0.6471, 0.8274, 0.8510 |
| CMYK | 0.00, 0.51, 0.58, 0.65 |
| HSL | 7°, 41%, 25% |
| HSV | 7°, 58%, 35% |
| XYZ | 5.4670, 4.1150, 2.3398 |
| YIQ | 57.0700, 29.3420, 7.8860 |

Conversions

Conversions Part 2

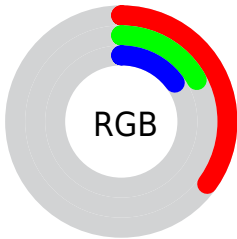
| Format | Color |
|-------------------------------------|------------------------------|
| RYB | 90, 45, 38 |
| Decimal | 5909542 |
| CIELab | 24.05, 20.38, 13.44 |
| CIELCh | 24, 24.419, 33.407 |
| Yxy | 4.1152, 0.4586, 0.3452 |
| Android (android.graphics.Color) | 4284099622 (0xFF5A2C26) |
| YUV | 57.0700, -9.4015, 28.8796 |
| Hunter-Lab | 20.2854, 12.6070, 7.3609 |

Details

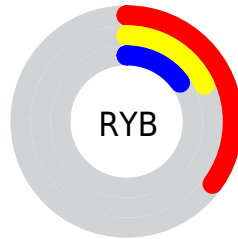
The HunterLab color **20.2854, 12.6070, 7.3609** is a dark color, and the websafe version is hex **663333**. A complement of this color would be **27.3688, -9.9702, -4.2647**, and the grayscale version is **20.2760, -1.0819, 1.1016**.

A 20% lighter version of the original color is **37.3448, 14.1349, 10.2665**, and **7.0160, 12.0151, 4.5336** is the 20% darker color. If you saturate the color by 10%, you get **18.7794, 15.3303, 8.1702**, and if you desaturate by 10%, it is **21.9811, 9.8990, 6.4638**.

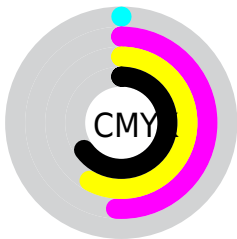
Distribution



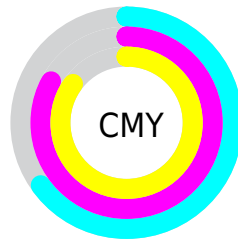
- Red (35%)
- Green (17%)
- Blue (15%)



- Red (35%)
- Yellow (18%)
- Blue (15%)



- Cyan (0%)
- Magenta (51%)
- Yellow (58%)
- Black (65%)



- Cyan (65%)
- Magenta (83%)
- Yellow (85%)

Brightness & Saturation Gradients

These gradients show how the HunterLab color 20.2854, 12.6070, 7.3609 changes by changing the brightness by 10 percent. The first figure shows a shift by +10% for each color and the second figure -10%.

Similar to the brightness gradients but the following saturation gradients show a change of the HunterLab color 20.2854, 12.6070, 7.3609 by changing the saturation by 10% instead.

■ 20.2854, 12.6070,
7.3609

■ 20.2854, 12.6070,
7.3609

■ 118.7058, 16.4400,
19.4366

■ 13.1841, 11.6066,
5.8405

■ 37.2450, 14.1474,
10.2308

■ 6.6949, 12.9817,
4.6864

■ 46.9259, 14.7321,
11.5870

0.0000, NaN, NaN

0.0000, NaN, NaN

■ 57.3250, 15.2145,
12.9162

0.0000, NaN, NaN

■ 68.3957, 15.6068,
14.2292

0.0000, NaN, NaN

■ 80.0995, 15.9184,
15.5332

0.0000, NaN, NaN

0.0000, NaN, NaN

■ 92.4039, 16.1571,

16.8334

0.0000, NaN, NaN

105.2807, 16.3292,
18.1336

20.2854, 12.6070,
7.3609

20.2854, 12.6070,
7.3609

18.7794, 15.3303,
8.1702

21.9811, 9.8990,
6.4638

17.4886, 17.9774,
8.8473

23.8392, 7.2673,
5.5116

16.4389, 20.4110,
9.3449

25.8376, 4.7387,
4.5279

15.6360, 22.4197,
9.8095

27.9570, 2.3224,
3.5280

15.4894, 22.7835,
9.9434

30.1813, 0.0162,
2.5214

■ 32.4973, -2.1876,
1.5132

■ 34.8941, -4.2993,
0.5065

■ 37.3626, -6.3297,
-0.4978

■ 39.8954, -8.2892,
-1.4991

Harmonies

Analogous

The Analogous color harmony consists of three colors that are next to each other on the color wheel.



20.2859, 15.6523, 1.9127



20.2854, 12.6070, 7.3609



20.2859, 5.8776, 10.0136

Triad

The Triadic color harmony groups three colors that are evenly spaced from another and form a triangle on the color wheel.



20.2859, 12.6057, 7.3612



20.2859, -12.5617, 6.3913



20.2859, -0.2082, -18.2379

Complementary

The Complementary color scheme is a pair of colors which are on the opposite of each other on the color wheel.



20.2854, 12.6070, 7.3609



27.3688, -9.9702, -4.2647

Split Complementary

Split-complementary colors differ from the complementary color scheme. The scheme consists of three colors, the original color and two neighbors of the complement color.



20.2859, -7.2165, -15.6632



20.2854, 12.6070, 7.3609



20.2859, -13.7016, 0.2611

Square

The Square scheme is like the rectangle color scheme, but the four colors are evenly spaced on the color wheel.



20.2859, 12.6057, 7.3612



20.2859, -8.5151, 9.6156



20.2859, -11.8931, -8.1319



20.2859, 7.6008, -14.2555

Rectangle

The Rectangle color scheme consists of four colors that form a rectangle on the color wheel.



20.2854, 12.6070, 7.3609



20.2859, 0.6209, 10.6254



20.2859, -11.8931, -8.1319



20.2859, -2.7334, -18.1148

Sweetspot

The Sweet Spot groups the original color and five complimentary colors.



20.2859, 12.6057, 7.3612



37.0431, 3.0010, 4.6363



20.5246, 20.9709, -11.6921



18.0558, 1.6453, 2.3515



70.1359, -3.7423, 3.8106



20.7927, -1.1094, 1.1297

Same Dimension

The Same Dimension uses a secret algorithm to generate beautiful new colors.



20.2859, 12.6057, 7.3612



24.2145, 21.5074, 11.1391



25.6798, 1.6790, 11.6193



15.4447, 0.1337, 1.3567



18.8991, 28.5689, 12.1457



43.3953, 69.5708, 27.9580

Inverse Universe

The Inverse Universe completely reimagines the original color for something new.



27.3688, -9.9702, -4.2647



35.1982, -14.2975, -7.0663



20.6342, 0.2103, -15.0755



16.0606, -1.7587, 0.3617



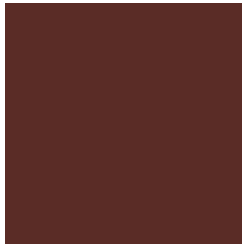
31.0905, -13.8204, -9.0260



72.1838, -31.6141, -21.9778

Previews

White Background



This preview shows how the HunterLab color 20.2854, 12.6070, 7.3609 looks on a white background.

Color Contrast Check

Large Text (above 18pt) WCAG AA ✓ Pass

Any Text WCAG AA ✓ Pass

Large Text (above 18pt) WCAG AAA ✓ Pass

Any Text WCAG AAA ✓ Pass

Black Background



Color Contrast Check

Large Text (above 18pt) WCAG AA × Fail

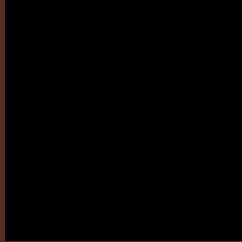
Any Text WCAG AA × Fail

Large Text (above 18pt) WCAG AAA × Fail

Any Text WCAG AAA × Fail

If you want to check with other color combinations, try the [Color Contrast Checker](#).

HunterLab 20.2854, 12.6070, 7.3609 Background



This preview shows how black text looks on a background with the HunterLab color 20.2854, 12.6070, 7.3609.

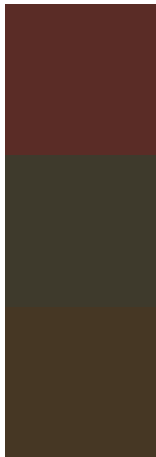


This preview shows how white text looks on a background with the HunterLab color 20.2854, 12.6070,

Color Blindness Simulation

Color vision deficiency is a very complex topic, and I could not describe the different causes any better than Wikipedia does, so if you want to learn more, you should check out their [article about color blindness](#).

Dichromacy



Original Color

20.2854, 12.6070, 7.3609

Protanopia

20.5721, -1.6905, 5.7792

Deuteranopia

20.4006, 1.1390, 7.7399



Tritanopia

20.2452, 13.7118, 5.1453

Trichromacy



Original Color

20.2854, 12.6070, 7.3609

Protanomaly

20.2264, 3.1120, 6.0969

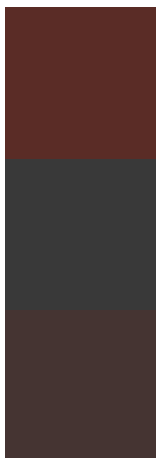
Deuteranomaly

20.1965, 5.1199, 7.3965

Tritanomaly

20.1887, 13.4433, 5.9635

Monochromacy



Original Color

20.2854, 12.6070, 7.3609

Achromatopsia

20.2275, -1.0793, 1.0990

Achromatomaly

19.8783, 3.4478, 3.3088

CSS Examples

Text

The CSS property to change the color of the text to HunterLab 20.2854, 12.6070, 7.3609 is called "color". The color property can be set on classes, ids or directly on the HTML element.

This example shows how text in the color `rgb(90, 44, 38)` looks like.

```
.text, #text, p{  
    color:rgb(90, 44, 38)  
}
```

If you want to add a text shadow in that color use the text-shadow property, you can generate a text shadow directly with our [CSS Text Shadow Generator](#).

Here you see how black text with a 4 pixel rgb(90, 44, 38) colored shadow looks like.

```
.shadow{ text-shadow: 4px 4px 2px rgb(90, 44, 38) }
```

Border

The CSS property to change the border of an element to HunterLab 20.2854, 12.6070, 7.3609 is called "border". The border property can be set on classes, ids or directly on the HTML element.

This example shows the color as border, it can be applied via the CSS property "border" or "border-color".

```
.border, #border, table{ border:4px solid rgb(90, 44, 38) }
```


If only the border color should be changed use the property `border-color`.

```
.border{ border-color:rgb(90, 44, 38) }
```

If you want to add a box shadow in that color use:

Here you see how a box with a 4 pixel `rgb(90, 44, 38)` colored shadow looks like.

```
.boxshadow{ -moz-box-shadow:4px 4px 4px  
4px rgb(90, 44, 38); -webkit-box-  
shadow:4px 4px 4px 4px rgb(90, 44, 38);  
box-shadow:4px 4px 4px 4px rgb(90, 44, 38)  
}
```

Background

The CSS property to change the background color of an element to HunterLab 20.2854, 12.6070, 7.3609 is called "background". The background property can be set on classes, ids or directly on the HTML element.

```
.background, #background, body{  
background: rgb(90, 44, 38) }
```

If only the background color should be changed can be used:

```
.background{ background-color: rgb(90, 44,  
38) }
```

This example shows the color as background, it is applied via the CSS property "background".

To optimize and compress your CSS code, you can use our [online CSS compressor and optimizer](#) based on csstidy. If you want to create a linear or radial gradient as background or border, check our [CSS Gradient Generator](#).

Hey! You found this booklet interesting? Support Converting Colors with the new Membership Option!

The pro membership hides all ads, plus gives you double the colors in the color bucket, and more awesome pro features!

[Learn more, Memberships starting at \\$2.50/m!](#)

**Follow me
on Twitter!**

@ConvertingColor