

Converting Colors

HunterLab(20.5471, 7.0169,
1.5560)

Have a look what the booklet for
HunterLab(20.5471, 7.0169, 1.5560)
contains.

HunterLab(20.5933, 7.1529, 1.6701)	3
<i>Conversions</i>	4
<i>Details</i>	6
<i>Harmonies</i>	12
<i>Previews</i>	24
<i>Color Blindness Simulation</i>	28
<i>CSS Examples</i>	31

Color

**HunterLab(20.5933, 7.1529,
1.6701)**

Conversions

Conversions Part 1

Format	Color
Hex	4D3339
RGB	77, 51, 57
RGB Percent	30%, 20%, 22%
CMY	0.6980, 0.8000, 0.7765
CMYK	0.00, 0.34, 0.26, 0.70
HSL	346°, 20%, 25%
HSV	346°, 34%, 30%
XYZ	4.9829, 4.2408, 4.4268
YIQ	59.4580, 13.5700, 7.3780

Conversions

Conversions Part 2

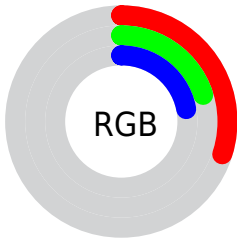
Format	Color
R_{YB}	77, 51, 57
Decimal	5059385
CIE Lab	24.45, 12.77, 0.97
CIE LCh	24, 12.806, 4.364
Yxy	4.2410, 0.3650, 0.3107
Android (android.graphics.Color)	4283249465 (0xFF4D3339)
YUV	59.4580, -1.2118, 15.3843
Hunter-Lab	20.5933, 7.1529, 1.6701

Details

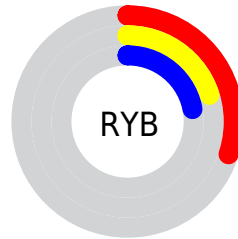
The HunterLab color **20.5933, 7.1529, 1.6701** is a dark color, and the websafe version is hex **333333**. A complement of this color would be **25.4295, -8.3051, 1.6245**, and the grayscale version is **21.0716, -1.1243, 1.1449**.

A 20% lighter version of the original color is **37.7450, 7.8089, 2.8227**, and **6.9663, 7.5798, 0.8893** is the 20% darker color. If you saturate the color by 10%, you get **18.8873, 9.8040, 1.9503**, and if you desaturate by 10%, it is **22.4348, 4.5338, 1.5052**.

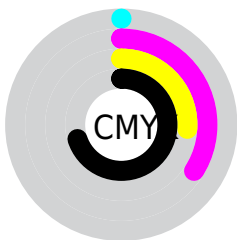
Distribution



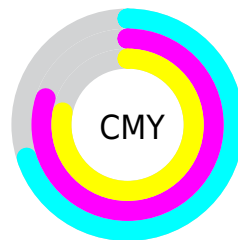
- Red (30%)
- Green (20%)
- Blue (22%)



- Red (30%)
- Yellow (20%)
- Blue (22%)



- Cyan (0%)
- Magenta (34%)
- Yellow (26%)
- Black (70%)



- Cyan (70%)
- Magenta (80%)
- Yellow (78%)

Brightness & Saturation Gradients

These gradients show how the HunterLab color 20.5933, 7.1529, 1.6701 changes by changing the brightness by 10 percent. The first figure shows a shift by +10% for each color and the second figure -10%.

Similar to the brightness gradients but the following saturation gradients show a change of the HunterLab color 20.5933, 7.1529, 1.6701 by changing the saturation by 10% instead.

■ 20.5933, 7.1529,
1.6701

■ 20.5933, 7.1529,
1.6701

■ 119.2596, 7.7302,
7.4880

■ 13.4510, 6.6106,
1.2068

■ 37.6216, 7.8417,
2.7227

■ 7.0211, 7.5501,
0.9575

■ 47.3326, 8.0340,
3.3060

0.0000, NaN, NaN

■ 57.7597, 8.1438,
3.9244

0.0000, NaN, NaN

■ 68.8567, 8.1807,
4.5762

0.0000, NaN, NaN

■ 80.5854, 8.1523,
5.2597

0.0000, NaN, NaN

■ 92.9134, 8.0646,

0.0000, NaN, NaN

105.8129, 7.9226,
6.7168

■ 20.5933, 7.1529,
1.6701

■ 20.5933, 7.1529,
1.6701

■ 18.8873, 9.8040,
1.9503

■ 22.4348, 4.5338,
1.5052

■ 17.3385, 12.4446,
2.3593

■ 24.3909, 1.9709,
1.4383

■ 15.9739, 14.9950,
2.9069

■ 26.4459, -0.5291,
1.4550

■ 14.8216, 17.3353,
3.5903

■ 28.5869, -2.9667,
1.5421

■ 13.9068, 19.3102,
4.3870

■ 30.8031, -5.3466,
1.6886

■ 13.1829, 20.9676,
5.1982

■ 33.0860, -7.6753,
1.8856

■ 12.7306, 22.1386,
5.6136

■ 35.4284, -9.9595,
2.1253

■ 37.8244, -12.2059,
2.4019

■ 40.2693, -14.4205,
2.7103

Harmonies

Analogous

The Analogous color harmony consists of three colors that are next to each other on the color wheel.



20.5938, 6.3104, -2.3058



20.5933, 7.1529, 1.6701



20.5938, 5.6479, 4.8410

Triad

The Triadic color harmony groups three colors that are evenly spaced from another and form a triangle on the color wheel.



20.5938, 7.1521, 1.6705



20.5938, -5.2677, 6.2962



20.5938, -4.3260, -6.6347

Complementary

The Complementary color scheme is a pair of colors which are on the opposite of each other on the color wheel.



20.5933, 7.1529, 1.6701



25.4295, -8.3051, 1.6245

Split Complementary

Split-complementary colors differ from the complementary color scheme. The scheme consists of three colors, the original color and two neighbors of the complement color.



20.5938, -7.0773, -3.4559



20.5933, 7.1529, 1.6701



20.5938, -7.5911, 4.0444

Square

The Square scheme is like the rectangle color scheme, but the four colors are evenly spaced on the color wheel.



20.5938, 7.1521, 1.6705



20.5938, -1.6825, 7.1678



20.5938, -8.2276, 0.5559



20.5938, -0.5108, -7.5996

Rectangle

The Rectangle color scheme consists of four colors that form a rectangle on the color wheel.



20.5933, 7.1529, 1.6701



20.5938, 3.5801, 6.2289



20.5938, -8.2276, 0.5559



20.5938, -5.3961, -5.7633

Sweetspot

The Sweet Spot groups the original color and five complimentary colors.



20.5938, 7.1521, 1.6705



32.6747, 1.4500, 1.8699



20.5931, 8.3174, -7.3799



16.6463, 0.8718, 0.9585



66.9319, -3.5713, 3.6365



18.1947, -0.9708, 0.9886

Same Dimension

The Same Dimension uses a secret algorithm to generate beautiful new colors.



20.5938, 7.1521, 1.6705



24.8819, 12.3279, 2.4849



21.9918, 3.4609, 5.1673



13.0711, 0.3519, 0.7387



16.9965, 29.4836, 8.0629



41.2274, 71.2255, 21.8160

Inverse Universe

The Inverse Universe completely reimagines the original color for something new.



20.5938, 7.1521, 1.6705



24.8819, 12.3279, 2.4849



23.7243, -4.6557, -3.0095



13.0711, 0.3519, 0.7387



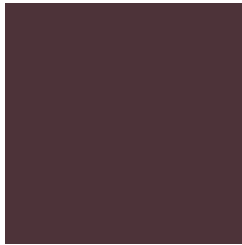
16.9965, 29.4836, 8.0629



41.2274, 71.2255, 21.8160

Previews

White Background



This preview shows how the HunterLab color 20.5933, 7.1529, 1.6701 looks on a white background.

Color Contrast Check

Large Text (above 18pt) WCAG AA ✓ Pass

Any Text WCAG AA ✓ Pass

Large Text (above 18pt) WCAG AAA ✓ Pass

Any Text WCAG AAA ✓ Pass

Black Background



Color Contrast Check

Large Text (above 18pt) WCAG AA × Fail

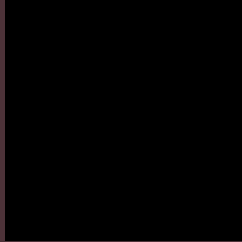
Any Text WCAG AA × Fail

Large Text (above 18pt) WCAG AAA × Fail

Any Text WCAG AAA × Fail

If you want to check with other color combinations, try the [Color Contrast Checker](#).

HunterLab 20.5933, 7.1529, 1.6701 Background



This preview shows how black text looks on a background with the HunterLab color 20.5933, 7.1529, 1.6701.

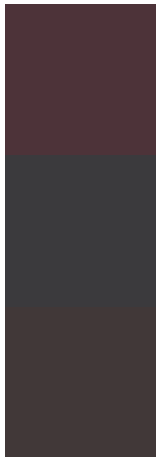


This preview shows how white text looks on a background with the HunterLab color 20.5933, 7.1529,

Color Blindness Simulation

Color vision deficiency is a very complex topic, and I could not describe the different causes any better than Wikipedia does, so if you want to learn more, you should check out their [article about color blindness](#).

Dichromacy



Original Color

20.5933, 7.1529, 1.6701

Protanopia

20.7192, -0.4280, 0.1259

Deuteranopia

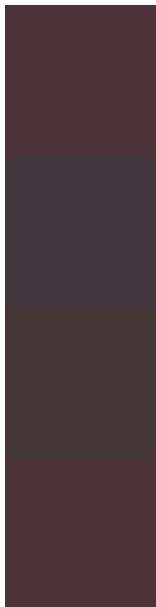
20.5856, 1.3298, 1.9323



Tritanopia

20.5457, 6.9111, 2.3508

Trichromacy



Original Color

20.5933, 7.1529, 1.6701

Protanomaly

20.5350, 2.5589, 0.3554

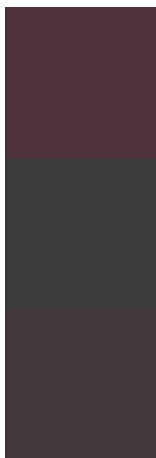
Deuteranomaly

20.4672, 3.3166, 1.8317

Tritanomaly

20.5693, 7.0310, 2.0134

Monochromacy



Original Color

20.5933, 7.1529, 1.6701

Achromatopsia

20.9129, -1.1159, 1.1362

Achromatomaly

20.7173, 1.8674, 1.3427

CSS Examples

Text

The CSS property to change the color of the text to HunterLab 20.5933, 7.1529, 1.6701 is called "color". The color property can be set on classes, ids or directly on the HTML element.

This example shows how text in the color `rgb(77, 51, 57)` looks like.

```
.text, #text, p{  
    color:rgb(77, 51, 57)  
}
```

If you want to add a text shadow in that color use the text-shadow property, you can generate a text shadow directly with our [CSS Text Shadow Generator](#).

Here you see how black text with a 4 pixel rgb(77, 51, 57) colored shadow looks like.

```
.shadow{ text-shadow: 4px 4px 2px rgb(77, 51, 57) }
```

Border

The CSS property to change the border of an element to HunterLab 20.5933, 7.1529, 1.6701 is called "border". The border property can be set on classes, ids or directly on the HTML element.

This example shows the color as border, it can be applied via the CSS property "border" or "border-color".

```
.border, #border, table{ border:4px solid rgb(77, 51, 57) }
```


If only the border color should be changed use the property `border-color`.

```
.border{ border-color:rgb(77, 51, 57) }
```

If you want to add a box shadow in that color use:

Here you see how a box with a 4 pixel `rgb(77, 51, 57)` colored shadow looks like.

```
.boxshadow{ -moz-box-shadow:4px 4px 4px  
4px rgb(77, 51, 57); -webkit-box-  
shadow:4px 4px 4px 4px rgb(77, 51, 57);  
box-shadow:4px 4px 4px 4px rgb(77, 51, 57)  
}
```

Background

The CSS property to change the background color of an element to HunterLab 20.5933, 7.1529, 1.6701 is called "background". The background property can be set on classes, ids or directly on the HTML element.

```
.background, #background, body{  
background: rgb(77, 51, 57) }
```

If only the background color should be changed can be used:

```
.background{ background-color: rgb(77, 51,  
57) }
```

This example shows the color as background, it is applied via the CSS property "background".

To optimize and compress your CSS code, you can use our [online CSS compressor and optimizer](#) based on csstidy. If you want to create a linear or radial gradient as background or border, check our [CSS Gradient Generator](#).

Hey! You found this booklet interesting? Support Converting Colors with the new Membership Option!

The pro membership hides all ads, plus gives you double the colors in the color bucket, and more awesome pro features!

[Learn more, Memberships starting at \\$2.50/m!](#)

**Follow me
on Twitter!**

@ConvertingColor