

Converting Colors

HunterLab(20.5964, 11.9259,
4.8505)

Have a look what the booklet for
HunterLab(20.5964, 11.9259,
4.8505) contains.

HunterLab(20.5964, 11.9259, 4.8505)	3
<i>Conversions</i>	4
<i>Details</i>	6
<i>Harmonies</i>	12
<i>Previews</i>	24
<i>Color Blindness Simulation</i>	28
<i>CSS Examples</i>	31

Color

**HunterLab(20.5964, 11.9259,
4.8505)**

Conversions

Conversions Part 1

Format	Color
Hex	582E30
RGB	88, 46, 48
RGB Percent	35%, 18%, 19%
CMY	0.6549, 0.8196, 0.8118
CMYK	0.00, 0.48, 0.45, 0.65
HSL	357°, 31%, 26%
HSV	357°, 48%, 35%
XYZ	5.5350, 4.2421, 3.3234
YIQ	58.7860, 24.3900, 9.5260

Conversions

Conversions Part 2

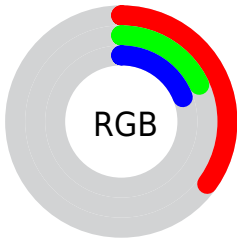
Format	Color
RYB	88, 46, 48
Decimal	5778992
CIELab	24.46, 19.42, 7.25
CIELCh	24, 20.731, 20.468
Yxy	4.2423, 0.4225, 0.3238
Android (android.graphics.Color)	4283969072 (0xFF582E30)
YUV	58.7860, -5.3175, 25.6207
Hunter-Lab	20.5964, 11.9259, 4.8505

Details

The HunterLab color **20.5964, 11.9259, 4.8505** is a dark color, and the websafe version is hex **663333**. A complement of this color would be **28.6920, -11.0396, -0.7075**, and the grayscale version is **20.8517, -1.1126, 1.1329**.

A 20% lighter version of the original color is **37.6992, 13.3348, 6.8090**, and **7.0160, 12.0151, 4.5336** is the 20% darker color. If you saturate the color by 10%, you get **18.8710, 14.9231, 5.6884**, and if you desaturate by 10%, it is **22.5337, 8.9230, 4.0678**.

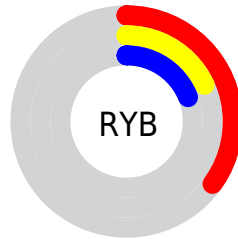
Distribution



 Red (35%)

 Green (18%)

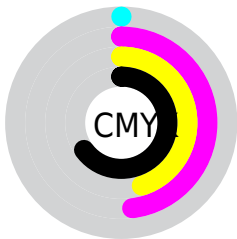
 Blue (19%)



 Red (35%)

 Yellow (18%)

 Blue (19%)

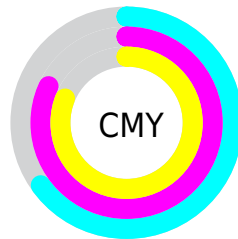



 Cyan (0%)


 Magenta (48%)

 Yellow (45%)

 Black (65%)



 Cyan (65%)

 Magenta (82%)

 Yellow (81%)

Brightness & Saturation Gradients

These gradients show how the HunterLab color 20.5964, 11.9259, 4.8505 changes by changing the brightness by 10 percent. The first figure shows a shift by +10% for each color and the second figure -10%.

Similar to the brightness gradients but the following saturation gradients show a change of the HunterLab color 20.5964, 11.9259, 4.8505 by changing the saturation by 10% instead.

■ 20.5964, 11.9259,
4.8505

■ 20.5964, 11.9259,
4.8505

■ 119.2652, 15.3294,
13.6990

■ 13.4537, 10.9850,
3.8556

■ 37.6255, 13.3539,
6.7716

■ 7.0243, 11.7780,
4.6602

■ 47.3368, 13.8867,
7.7276

0.0000, NaN, NaN

0.0000, NaN, NaN

■ 57.7641, 14.3200,
8.6903

0.0000, NaN, NaN

■ 68.8614, 14.6653,
9.6636

0.0000, NaN, NaN

■ 80.5903, 14.9321,
10.6497

0.0000, NaN, NaN

0.0000, NaN, NaN

■ 92.9185, 15.1278,

11.6504

0.0000, NaN, NaN

105.8183, 15.2585,
12.6666

■ 20.5964, 11.9259,
4.8505

■ 20.5964, 11.9259,
4.8505

■ 18.8710, 14.9231,
5.6884

■ 22.5337, 8.9230,
4.0678

■ 17.3915, 17.8024,
6.5526

■ 24.6491, 5.9832,
3.3504

■ 16.1939, 20.3914,
7.3952

■ 26.9159, 3.1355,
2.6999

■ 15.3054, 22.4833,
8.1491

■ 29.3117, 0.3882,
2.1123

■ 14.5998, 24.3287,
8.7116

■ 31.8185, -2.2618,
1.5809

■ 14.4357, 24.7851,
8.8354

■ 34.4215, -4.8232,
1.0989

■ 37.1091, -7.3068,
0.6594

■ 39.8718, -9.7234,
0.2564

■ 42.7017, -12.0832,
-0.1152

Harmonies

Analogous

The Analogous color harmony consists of three colors that are next to each other on the color wheel.



20.5969, 12.6880, -0.9404



20.5964, 11.9259, 4.8505



20.5969, 7.4481, 8.3291

Triad

The Triadic color harmony groups three colors that are evenly spaced from another and form a triangle on the color wheel.



20.5969, 11.9247, 4.8509



20.5969, -9.8579, 7.3298



20.5969, -3.1236, -14.3325

Complementary

The Complementary color scheme is a pair of colors which are on the opposite of each other on the color wheel.



20.5964, 11.9259, 4.8505



28.6920, -11.0396, -0.7075

Split Complementary

Split-complementary colors differ from the complementary color scheme. The scheme consists of three colors, the original color and two neighbors of the complement color.



20.5969, -8.4478, -10.2788



20.5964, 11.9259, 4.8505



20.5969, -12.0062, 2.9894

Square

The Square scheme is like the rectangle color scheme, but the four colors are evenly spaced on the color wheel.



20.5969, 11.9247, 4.8509



20.5969, -5.2795, 9.4226



20.5969, -11.5240, -3.4703



20.5969, 3.4416, -13.3658

Rectangle

The Rectangle color scheme consists of four colors that form a rectangle on the color wheel.



20.5964, 11.9259, 4.8505



20.5969, 3.2345, 9.4570



20.5969, -11.5240, -3.4703



20.5969, -5.1035, -13.4741

Sweetspot

The Sweet Spot groups the original color and five complimentary colors.



20.5969, 11.9247, 4.8509



36.6080, 2.9471, 3.3082



21.5232, 16.7979, -11.8762



18.1992, 1.7495, 1.7230



70.1359, -3.7423, 3.8106



20.7927, -1.1094, 1.1297

Same Dimension

The Same Dimension uses a secret algorithm to generate beautiful new colors.



20.5969, 11.9247, 4.8509



24.7090, 20.1882, 7.6541



24.5790, 3.4824, 8.9707



14.5642, 0.3349, 1.0878



17.7290, 30.4244, 10.9679



41.9746, 71.9413, 26.6699

Inverse Universe

The Inverse Universe completely reimagines the original color for something new.



20.5969, 11.9247, 4.8509



24.7090, 20.1882, 7.6541



23.5674, -3.2011, -8.7608



14.5642, 0.3349, 1.0878



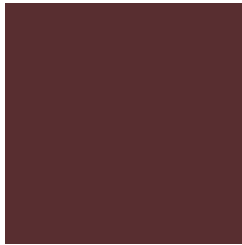
17.7290, 30.4244, 10.9679



41.9746, 71.9413, 26.6699

Previews

White Background



This preview shows how the HunterLab color 20.5964, 11.9259, 4.8505 looks on a white background.

Color Contrast Check

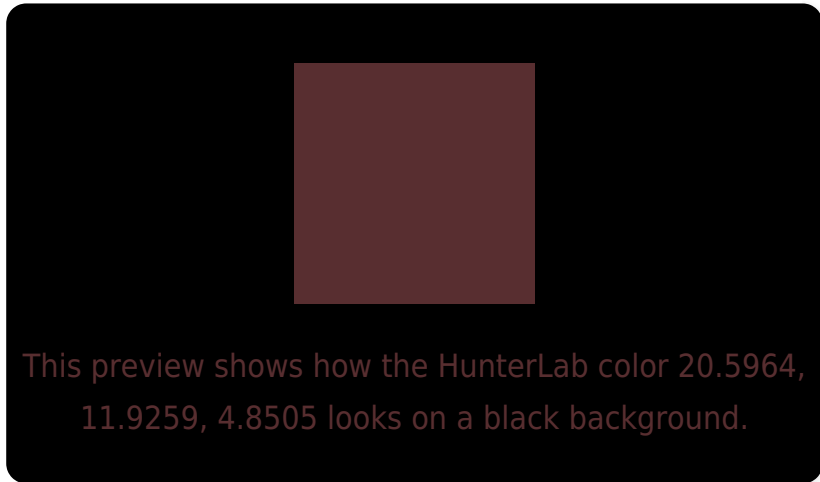
Large Text (above 18pt) WCAG AA ✓ Pass

Any Text WCAG AA ✓ Pass

Large Text (above 18pt) WCAG AAA ✓ Pass

Any Text WCAG AAA ✓ Pass

Black Background



Color Contrast Check

Large Text (above 18pt) WCAG AA × Fail

Any Text WCAG AA × Fail

Large Text (above 18pt) WCAG AAA × Fail

Any Text WCAG AAA × Fail

If you want to check with other color combinations, try the [Color Contrast Checker](#).

HunterLab 20.5964, 11.9259, 4.8505 Background



This preview shows how black text looks on a background with the HunterLab color 20.5964, 11.9259, 4.8505.



This preview shows how white text looks on a background with the HunterLab color 20.5964, 11.9259,

Color Blindness Simulation

Color vision deficiency is a very complex topic, and I could not describe the different causes any better than Wikipedia does, so if you want to learn more, you should check out their [article about color blindness](#).

Dichromacy



Original Color

20.5964, 11.9259, 4.8505

Protanopia

20.6992, -0.8379, 2.7433

Deuteranopia

20.7143, 1.3346, 5.3891



Tritanopia

20.6166, 12.0241, 4.5580

Trichromacy



Original Color

20.5964, 11.9259, 4.8505

Protanomaly

20.5569, 3.4258, 3.3568

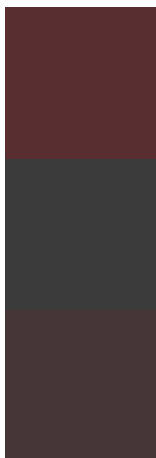
Deuteranomaly

20.4883, 5.2811, 4.9348

Tritanomaly

20.6166, 12.0241, 4.5580

Monochromacy



Original Color

20.5964, 11.9259, 4.8505

Achromatopsia

20.9129, -1.1159, 1.1362

Achromatomaly

20.5335, 3.4855, 2.2771

CSS Examples

Text

The CSS property to change the color of the text to HunterLab 20.5964, 11.9259, 4.8505 is called "color". The color property can be set on classes, ids or directly on the HTML element.

This example shows how text in the color `rgb(88, 46, 48)` looks like.

```
.text, #text, p{  
    color:rgb(88, 46, 48)  
}
```

If you want to add a text shadow in that color use the text-shadow property, you can generate a text shadow directly with our [CSS Text Shadow Generator](#).

Here you see how black text with a 4 pixel rgb(88, 46, 48) colored shadow looks like.

```
.shadow{ text-shadow: 4px 4px 2px rgb(88, 46, 48) }
```

Border

The CSS property to change the border of an element to HunterLab 20.5964, 11.9259, 4.8505 is called "border". The border property can be set on classes, ids or directly on the HTML element.

This example shows the color as border, it can be applied via the CSS property "border" or "border-color".

```
.border, #border, table{ border:4px solid rgb(88, 46, 48) }
```


If only the border color should be changed use the property `border-color`.

```
.border{ border-color:rgb(88, 46, 48) }
```

If you want to add a box shadow in that color use:

Here you see how a box with a 4 pixel `rgb(88, 46, 48)` colored shadow looks like.

```
.boxshadow{ -moz-box-shadow:4px 4px 4px  
4px rgb(88, 46, 48); -webkit-box-  
shadow:4px 4px 4px 4px rgb(88, 46, 48);  
box-shadow:4px 4px 4px 4px rgb(88, 46, 48)  
}
```

Background

The CSS property to change the background color of an element to HunterLab 20.5964, 11.9259, 4.8505 is called "background". The background property can be set on classes, ids or directly on the HTML element.

```
.background, #background, body{  
background: rgb(88, 46, 48) }
```

If only the background color should be changed can be used:

```
.background{ background-color: rgb(88, 46,  
48) }
```

This example shows the color as background, it is applied via the CSS property "background".

To optimize and compress your CSS code, you can use our [online CSS compressor and optimizer](#) based on csstidy. If you want to create a linear or radial gradient as background or border, check our [CSS Gradient Generator](#).

Hey! You found this booklet interesting? Support Converting Colors with the new Membership Option!

The pro membership hides all ads, plus gives you double the colors in the color bucket, and more awesome pro features!

[Learn more, Memberships starting at \\$2.50/m!](#)

**Follow me
on Twitter!**

@ConvertingColor