

Converting Colors

HunterLab(20.6811, -0.0359,
5.3175)

Have a look what the booklet for
HunterLab(20.6811, -0.0359, 5.3175)
contains.

HunterLab(20.6924, 0.0451, 5.3452)	3
<i>Conversions</i>	4
<i>Details</i>	6
<i>Harmonies</i>	12
<i>Previews</i>	24
<i>Color Blindness Simulation</i>	28
<i>CSS Examples</i>	31

Color

**HunterLab(20.6924, 0.0451,
5.3452)**

Conversions

Conversions Part 1

Format	Color
Hex	42392E
RGB	66, 57, 46
RGB Percent	26%, 22%, 18%
CMY	0.7412, 0.7765, 0.8196
CMYK	0.00, 0.14, 0.30, 0.74
HSL	33°, 18%, 22%
HSV	33°, 30%, 26%
XYZ	4.2030, 4.2818, 3.1897
YIQ	58.4370, 8.8950, -1.5130

Conversions

Conversions Part 2

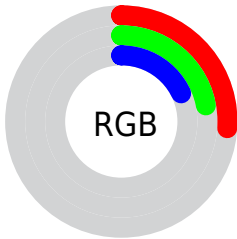
Format	Color
RYB	62, 66, 46
Decimal	4340014
CIELab	24.58, 1.89, 8.32
CIELCh	25, 8.527, 77.202
Yxy	4.2819, 0.3600, 0.3668
Android (android.graphics.Color)	4282530094 (0xFF42392E)
YUV	58.4370, -6.1314, 6.6328
Hunter-Lab	20.6924, 0.0451, 5.3452

Details

The HunterLab color **20.6924, 0.0451, 5.3452** is a dark color, and the websafe version is hex **333333**. A complement of this color would be **19.2522, -1.4607, -4.0358**, and the grayscale version is **20.7382, -1.1065, 1.1267**.

A 20% lighter version of the original color is **37.7502, -0.7083, 7.3465**, and **7.1293, 0.8870, 4.4086** is the 20% darker color. If you saturate the color by 10%, you get **19.8715, 0.6198, 6.4241**, and if you desaturate by 10%, it is **21.5415, -0.4540, 4.1274**.

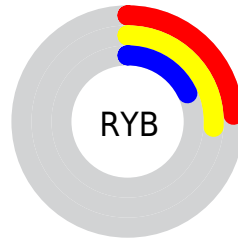
Distribution



Red (26%)

Green (22%)

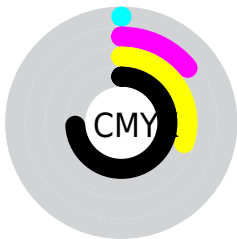
Blue (18%)



Red (24%)

Yellow (26%)

Blue (18%)

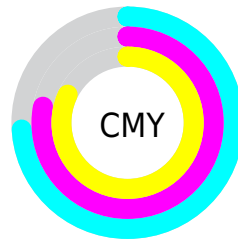


Cyan (0%)

Magenta (14%)

Yellow (30%)

Black (74%)



Cyan (74%)

Magenta (78%)

Yellow (82%)

Brightness & Saturation Gradients

These gradients show how the HunterLab color 20.6924, 0.0451, 5.3452 changes by changing the brightness by 10 percent. The first figure shows a shift by +10% for each color and the second figure -10%.

Similar to the brightness gradients but the following saturation gradients show a change of the HunterLab color 20.6924, 0.0451, 5.3452 by changing the saturation by 10% instead.

■ 20.6924, 0.0451,
5.3452

■ 20.6924, 0.0451,
5.3452

■ 119.4374, -4.3323,
14.7330

■ 13.5370, 0.2785,
4.2536

■ 37.7427, -0.6162,
7.4226

■ 7.1226, 0.7752,
4.9858

■ 47.4633, -1.0258,
8.4452

0.0000, NaN, NaN

0.0000, NaN, NaN

■ 57.8994, -1.4811,
9.4692

0.0000, NaN, NaN

■ 69.0048, -1.9782,
10.4995

0.0000, NaN, NaN

■ 80.7414, -2.5142,
11.5392

0.0000, NaN, NaN

0.0000, NaN, NaN

■ 93.0770, -3.0865,

12.5904

0.0000, NaN, NaN

105.9838, -3.6931,
13.6547

■ 20.6924, 0.0451,
5.3452

■ 20.6924, 0.0451,
5.3452

■ 19.8715, 0.6198,
6.4241

■ 21.5415, -0.4540,
4.1274

■ 19.0790, 1.2757,
7.3528

■ 22.4155, -0.8793,
2.7804

■ 18.3174, 2.0147,
8.1209

■ 23.3135, -1.2357,
1.3142

■ 17.5886, 2.8385,
8.7191

■ 24.2339, -1.5275,
-0.2617

■ 16.8944, 3.7467,
9.1395

■ 25.1754, -1.7588,
-1.9389

■ 16.2342, 4.7238,
9.4149

■ 26.1368, -1.9337,
-3.7093

■ 15.6159, 5.6716,
9.7217

■ 27.1168, -2.0560,
-5.5659

■ 28.1144, -2.1294,
-7.5021

■ 29.1287, -2.1572,
-9.5120

Harmonies

Analogous

The Analogous color harmony consists of three colors that are next to each other on the color wheel.



20.6929, 2.4999, 4.3991



20.6924, 0.0451, 5.3452



20.6929, -2.6018, 5.2699

Triad

The Triadic color harmony groups three colors that are evenly spaced from another and form a triangle on the color wheel.



20.6929, 0.0444, 5.3455



20.6929, -5.7849, -0.3707



20.6929, 2.7984, -2.4743

Complementary

The Complementary color scheme is a pair of colors which are on the opposite of each other on the color wheel.



20.6924, 0.0451, 5.3452



19.2522, -1.4607, -4.0358

Split Complementary

Split-complementary colors differ from the complementary color scheme. The scheme consists of three colors, the original color and two neighbors of the complement color.



20.6929, 0.4352, -4.1034



20.6924, 0.0451, 5.3452



20.6929, -4.4792, -2.7873

Square

The Square scheme is like the rectangle color scheme, but the four colors are evenly spaced on the color wheel.



20.6929, 0.0444, 5.3455



20.6929, -5.8777, 2.1793



20.6929, -2.2303, -4.2248



20.6929, 4.1432, 0.0150

Rectangle

The Rectangle color scheme consists of four colors that form a rectangle on the color wheel.



20.6924, 0.0451, 5.3452



20.6929, -4.1189, 4.6512



20.6929, -2.2303, -4.2248



20.6929, 2.0914, -3.1537

Sweetspot

The Sweet Spot groups the original color and five complimentary colors.



20.6929, 0.0444, 5.3455



29.6485, -1.2052, 3.4950



18.4069, 5.7379, -0.1998



15.0498, -0.5957, 1.8438



63.7533, -3.4017, 3.4638



15.6573, -0.8354, 0.8507

Same Dimension

The Same Dimension uses a secret algorithm to generate beautiful new colors.



20.6929, 0.0444, 5.3455



26.4811, 0.5995, 8.0975



22.8419, -3.8593, 7.2981



11.9726, -0.5026, 1.3406



22.6048, 9.4479, 14.0944



54.9419, 27.3160, 34.3331

Inverse Universe

The Inverse Universe completely reimagines the original color for something new.



19.2522, -1.4607, -4.0358



24.1478, -1.8141, -7.1335



17.1806, 2.4815, -7.1572



11.7529, -0.7355, -0.0850



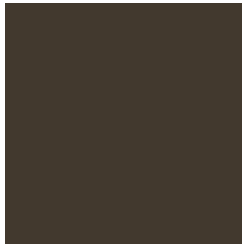
16.2256, 5.0349, -31.1496



38.3452, 17.4269, -85.5478

Previews

White Background



This preview shows how the HunterLab color 20.6924, 0.0451, 5.3452 looks on a white background.

Color Contrast Check

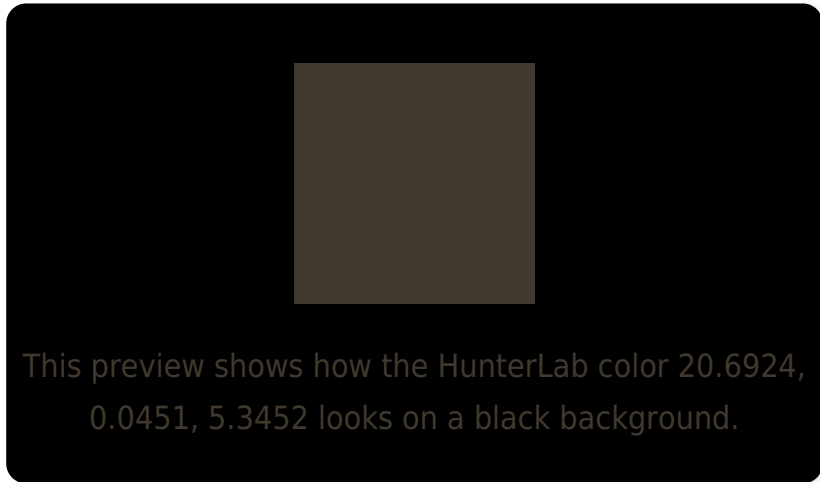
Large Text (above 18pt) WCAG AA ✓ Pass

Any Text WCAG AA ✓ Pass

Large Text (above 18pt) WCAG AAA ✓ Pass

Any Text WCAG AAA ✓ Pass

Black Background



Color Contrast Check

Large Text (above 18pt) WCAG AA × Fail

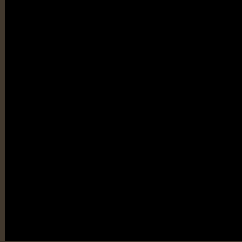
Any Text WCAG AA × Fail

Large Text (above 18pt) WCAG AAA × Fail

Any Text WCAG AAA × Fail

If you want to check with other color combinations, try the [Color Contrast Checker](#).

HunterLab 20.6924, 0.0451, 5.3452 Background



This preview shows how black text looks on a background with the HunterLab color 20.6924, 0.0451, 5.3452.

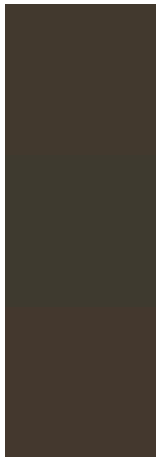


This preview shows how white text looks on a background with the HunterLab color 20.6924, 0.0451,

Color Blindness Simulation

Color vision deficiency is a very complex topic, and I could not describe the different causes any better than Wikipedia does, so if you want to learn more, you should check out their [article about color blindness](#).

Dichromacy



Original Color

20.6924, 0.0451, 5.3452

Protanopia

20.6288, -1.3783, 4.9578

Deuteranopia

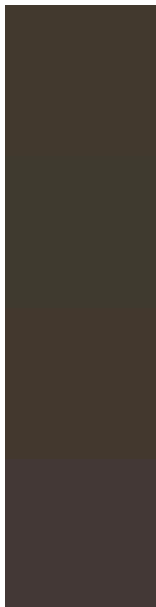
20.6266, 1.0392, 5.2984



Tritanopia

20.6811, 2.9888, 0.9338

Trichromacy



Original Color

20.6924, 0.0451, 5.3452

Protanomaly

20.7078, -1.1032, 5.0407

Deuteranomaly

20.5399, 0.7464, 5.2086

Tritanomaly

20.7074, 1.6453, 2.7959

Monochromacy



Original Color

20.6924, 0.0451, 5.3452

Achromatopsia

20.5697, -1.0975, 1.1176

Achromatomaly

20.6992, -0.8379, 2.7433

CSS Examples

Text

The CSS property to change the color of the text to HunterLab 20.6924, 0.0451, 5.3452 is called "color". The color property can be set on classes, ids or directly on the HTML element.

This example shows how text in the color `rgb(66, 57, 46)` looks like.

```
.text, #text, p{  
    color:rgb(66, 57, 46)  
}
```

If you want to add a text shadow in that color use the text-shadow property, you can generate a text shadow directly with our [CSS Text Shadow Generator](#).

Here you see how black text with a 4 pixel rgb(66, 57, 46) colored shadow looks like.

```
.shadow{ text-shadow: 4px 4px 2px rgb(66, 57, 46) }
```

Border

The CSS property to change the border of an element to HunterLab 20.6924, 0.0451, 5.3452 is called "border". The border property can be set on classes, ids or directly on the HTML element.

This example shows the color as border, it can be applied via the CSS property "border" or "border-color".

```
.border, #border, table{ border:4px solid rgb(66, 57, 46) }
```


If only the border color should be changed use the property `border-color`.

```
.border{ border-color:rgb(66, 57, 46) }
```

If you want to add a box shadow in that color use:

Here you see how a box with a 4 pixel `rgb(66, 57, 46)` colored shadow looks like.

```
.boxshadow{ -moz-box-shadow:4px 4px 4px  
4px rgb(66, 57, 46); -webkit-box-  
shadow:4px 4px 4px 4px rgb(66, 57, 46);  
box-shadow:4px 4px 4px 4px rgb(66, 57, 46)  
}
```

Background

The CSS property to change the background color of an element to HunterLab 20.6924, 0.0451, 5.3452 is called "background". The background property can be set on classes, ids or directly on the HTML element.

```
.background, #background, body{  
background: rgb(66, 57, 46) }
```

If only the background color should be changed can be used:

```
.background{ background-color: rgb(66, 57,  
46) }
```

This example shows the color as background, it is applied via the CSS property "background".

To optimize and compress your CSS code, you can use our [online CSS compressor and optimizer](#) based on csstidy. If you want to create a linear or radial gradient as background or border, check our [CSS Gradient Generator](#).

Hey! You found this booklet interesting? Support Converting Colors with the new Membership Option!

The pro membership hides all ads, plus gives you double the colors in the color bucket, and more awesome pro features!

[Learn more, Memberships starting at \\$2.50/m!](#)

**Follow me
on Twitter!**

@ConvertingColor