

Converting Colors

HunterLab(20.6949, 1.8887,
4.4600)

Have a look what the booklet for
HunterLab(20.6949, 1.8887, 4.4600)
contains.

HunterLab(20.7733, 1.6507, 4.5360)	3
<i>Conversions</i>	4
<i>Details</i>	6
<i>Harmonies</i>	12
<i>Previews</i>	24
<i>Color Blindness Simulation</i>	28
<i>CSS Examples</i>	31

Color

**HunterLab(20.7733, 1.6507,
4.5360)**

Conversions

Conversions Part 1

Format	Color
Hex	453831
RGB	69, 56, 49
RGB Percent	27%, 22%, 19%
CMY	0.7294, 0.7804, 0.8078
CMYK	0.00, 0.19, 0.29, 0.73
HSL	21°, 17%, 23%
HSV	21°, 29%, 27%
XYZ	4.4228, 4.3153, 3.5055
YIQ	59.0890, 9.9950, 0.5790

Conversions

Conversions Part 2

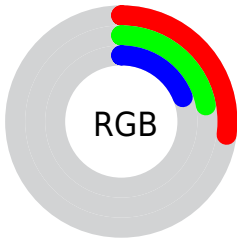
Format	Color
RYB	69, 60, 49
Decimal	4536369
CIELab	24.69, 4.46, 6.53
CIElCh	25, 7.906, 55.636
Yxy	4.3155, 0.3612, 0.3525
Android (android.graphics.Color)	4282726449 (0xFF453831)
YUV	59.0890, -4.9739, 8.6919
Hunter-Lab	20.7733, 1.6507, 4.5360

Details

The HunterLab color **20.7733, 1.6507, 4.5360** is a dark color, and the websafe version is hex **333333**. A complement of this color would be **21.2785, -3.1508, -2.6315**, and the grayscale version is **20.9580, -1.1183, 1.1387**.

A 20% lighter version of the original color is **37.9187, 1.3683, 6.4609**, and **7.2322, 2.1868, 4.2593** is the 20% darker color. If you saturate the color by 10%, you get **19.6118, 2.8190, 5.4833**, and if you desaturate by 10%, it is **21.9833, 0.5616, 3.4996**.

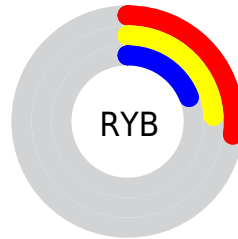
Distribution



Red (27%)

Green (22%)

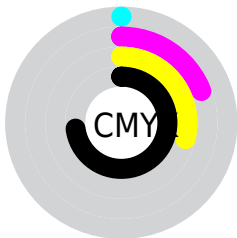
Blue (19%)



Red (27%)

Yellow (24%)

Blue (19%)

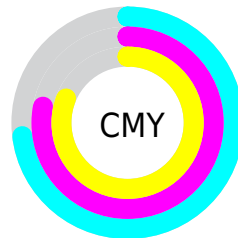


Cyan (0%)

Magenta (19%)

Yellow (29%)

Black (73%)



Cyan (73%)

Magenta (78%)

Yellow (81%)

Brightness & Saturation Gradients

These gradients show how the HunterLab color 20.7733, 1.6507, 4.5360 changes by changing the brightness by 10 percent. The first figure shows a shift by +10% for each color and the second figure -10%.

Similar to the brightness gradients but the following saturation gradients show a change of the HunterLab color 20.7733, 1.6507, 4.5360 by changing the saturation by 10% instead.

■ 20.7733, 1.6507,
4.5360

■ 20.7733, 1.6507,
4.5360

■ 119.5825, -1.5269,
13.0249

■ 13.6072, 1.6895,
3.6068

■ 37.8416, 1.3211,
6.3518

■ 7.2042, 2.3145,
4.1473

■ 47.5700, 1.0577,
7.2634

0.0000, NaN, NaN

0.0000, NaN, NaN

■ 58.0133, 0.7391,
8.1853

0.0000, NaN, NaN

■ 69.1256, 0.3707,
9.1207

0.0000, NaN, NaN

■ 80.8688, -0.0432,
10.0713

0.0000, NaN, NaN

0.0000, NaN, NaN

■ 93.2105, -0.4992,

11.0385

0.0000, NaN, NaN

106.1232, -0.9946,
12.0228

■ 20.7733, 1.6507,
4.5360

■ 20.7733, 1.6507,
4.5360

■ 19.6118, 2.8190,
5.4833

■ 21.9833, 0.5616,
3.4996

■ 18.5025, 4.0726,
6.3270

■ 23.2360, -0.4512,
2.3851

■ 17.4517, 5.4121,
7.0517

■ 24.5278, -1.3944,
1.2026

■ 16.4657, 6.8351,
7.6404

■ 25.8552, -2.2738,
-0.0395

■ 15.5514, 8.3331,
8.0759

■ 27.2153, -3.0952,
-1.3341

■ 14.7149, 9.8838,
8.3609

■ 28.6055, -3.8641,
-2.6754

■ 13.9481, 11.3913,
8.7087

■ 30.0235, -4.5856,
-4.0586

■ 13.8741, 11.5396,
8.7512

■ 31.4672, -5.2642,
-5.4795

■ 32.9349, -5.9042,
-6.9346

Harmonies

Analogous

The Analogous color harmony consists of three colors that are next to each other on the color wheel.



20.7738, 3.3648, 2.9985



20.7733, 1.6507, 4.5360



20.7738, -0.7456, 5.1629

Triad

The Triadic color harmony groups three colors that are evenly spaced from another and form a triangle on the color wheel.



20.7738, 1.6500, 4.5363



20.7738, -5.6519, 1.4728



20.7738, 0.9932, -3.3866

Complementary

The Complementary color scheme is a pair of colors which are on the opposite of each other on the color wheel.



20.7733, 1.6507, 4.5360



21.2785, -3.1508, -2.6315

Split Complementary

Split-complementary colors differ from the complementary color scheme. The scheme consists of three colors, the original color and two neighbors of the complement color.



20.7738, -1.4710, -3.9175



20.7733, 1.6507, 4.5360



20.7738, -5.2346, -0.9282

Square

The Square scheme is like the rectangle color scheme, but the four colors are evenly spaced on the color wheel.



20.7738, 1.6500, 4.5363



20.7738, -4.8996, 3.5308



20.7738, -3.7322, -2.9712



20.7738, 2.9734, -1.5949

Rectangle

The Rectangle color scheme consists of four colors that form a rectangle on the color wheel.



20.7733, 1.6507, 4.5360



20.7738, -2.3787, 5.0405



20.7738, -3.7322, -2.9712



20.7738, 0.1909, -3.7268

Sweetspot

The Sweet Spot groups the original color and five complimentary colors.



20.7738, 1.6500, 4.5363



30.1311, -0.5388, 3.1549



19.5184, 6.2839, -1.7068



15.6132, -0.2286, 1.7021



64.8100, -3.4581, 3.5212



16.4960, -0.8802, 0.8963

Same Dimension

The Same Dimension uses a secret algorithm to generate beautiful new colors.



20.7738, 1.6500, 4.5363



25.8684, 3.2592, 6.8184



23.2022, -2.4695, 6.8286



12.5841, -0.2622, 1.2677



19.6705, 18.1224, 12.4382



46.8828, 49.2764, 29.7516

Inverse Universe

The Inverse Universe completely reimagines the original color for something new.



21.2785, -3.1508, -2.6315



26.6814, -4.5040, -4.7624



18.8113, 0.9447, -6.1376



12.6676, -1.0518, 0.0873



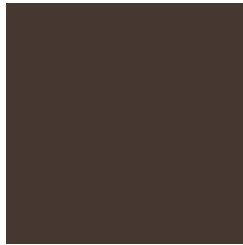
21.5598, -3.4277, -19.5484



51.5425, -5.8031, -51.8964

Previews

White Background



This preview shows how the HunterLab color 20.7733, 1.6507, 4.5360 looks on a white background.

Color Contrast Check

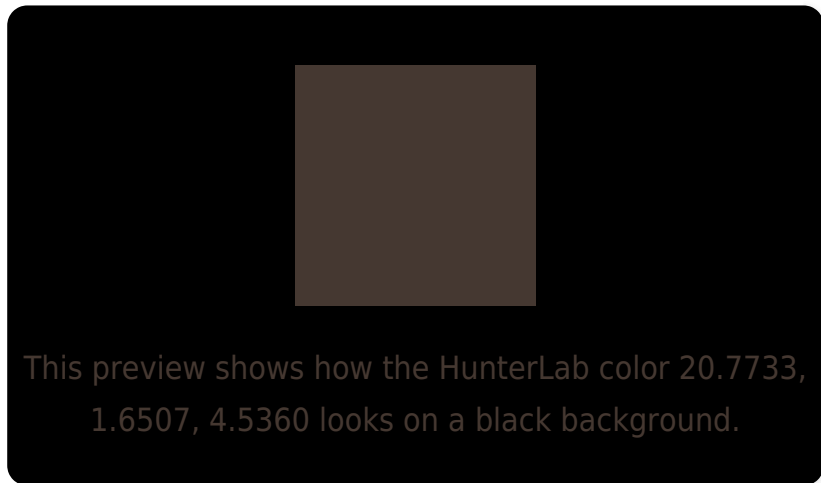
Large Text (above 18pt) WCAG AA ✓ Pass

Any Text WCAG AA ✓ Pass

Large Text (above 18pt) WCAG AAA ✓ Pass

Any Text WCAG AAA ✓ Pass

Black Background



Color Contrast Check

Large Text (above 18pt) WCAG AA × Fail

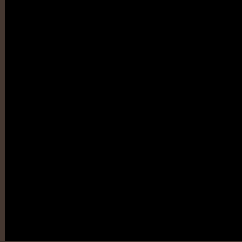
Any Text WCAG AA × Fail

Large Text (above 18pt) WCAG AAA × Fail

Any Text WCAG AAA × Fail

If you want to check with other color combinations, try the [Color Contrast Checker](#).

HunterLab 20.7733, 1.6507, 4.5360 Background



This preview shows how black text looks on a background with the HunterLab color 20.7733, 1.6507, 4.5360.



This preview shows how white text looks on a background with the HunterLab color 20.7733, 1.6507,

Color Blindness Simulation

Color vision deficiency is a very complex topic, and I could not describe the different causes any better than Wikipedia does, so if you want to learn more, you should check out their [article about color blindness](#).

Dichromacy



Original Color

20.7733, 1.6507, 4.5360

Protanopia

20.9341, -1.4507, 4.3275

Deuteranopia

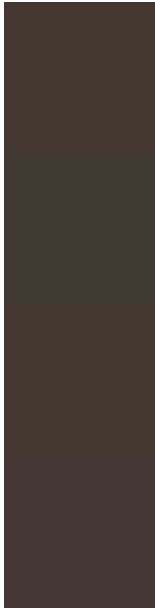
20.6858, 1.3574, 4.4418



Tritanopia

20.8572, 3.5641, 1.1525

Trichromacy



Original Color

20.7733, 1.6507, 4.5360

Protanomaly

20.9290, -0.2182, 4.3439

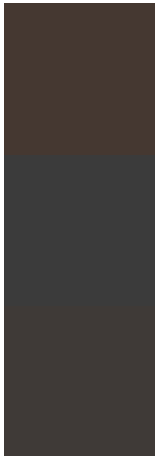
Deuteranomaly

20.6858, 1.3574, 4.4418

Tritanomaly

20.7613, 3.0589, 2.5245

Monochromacy



Original Color

20.7733, 1.6507, 4.5360

Achromatopsia

20.9129, -1.1159, 1.1362

Achromatomaly

20.8775, -0.1770, 2.5969

CSS Examples

Text

The CSS property to change the color of the text to HunterLab 20.7733, 1.6507, 4.5360 is called "color". The color property can be set on classes, ids or directly on the HTML element.

This example shows how text in the color `rgb(69, 56, 49)` looks like.

```
.text, #text, p{  
    color:rgb(69, 56, 49)  
}
```

If you want to add a text shadow in that color use the text-shadow property, you can generate a text shadow directly with our [CSS Text Shadow Generator](#).

Here you see how black text with a 4 pixel rgb(69, 56, 49) colored shadow looks like.

```
.shadow{ text-shadow: 4px 4px 2px rgb(69, 56, 49) }
```

Border

The CSS property to change the border of an element to HunterLab 20.7733, 1.6507, 4.5360 is called "border". The border property can be set on classes, ids or directly on the HTML element.

This example shows the color as border, it can be applied via the CSS property "border" or "border-color".

```
.border, #border, table{ border:4px solid rgb(69, 56, 49) }
```


If only the border color should be changed use the property border-color.

```
.border{ border-color:rgb(69, 56, 49) }
```

If you want to add a box shadow in that color use:

Here you see how a box with a 4 pixel rgb(69, 56, 49) colored shadow looks like.

```
.boxshadow{ -moz-box-shadow:4px 4px 4px  
4px rgb(69, 56, 49); -webkit-box-  
shadow:4px 4px 4px 4px rgb(69, 56, 49);  
box-shadow:4px 4px 4px 4px rgb(69, 56, 49)  
}
```

Background

The CSS property to change the background color of an element to HunterLab 20.7733, 1.6507, 4.5360 is called "background". The background property can be set on classes, ids or directly on the HTML element.

```
.background, #background, body{  
background: rgb(69, 56, 49) }
```

If only the background color should be changed can be used:

```
.background{ background-color: rgb(69, 56,  
49) }
```

This example shows the color as background, it is applied via the CSS property "background".

To optimize and compress your CSS code, you can use our [online CSS compressor and optimizer](#) based on csstidy. If you want to create a linear or radial gradient as background or border, check our [CSS Gradient Generator](#).

Hey! You found this booklet interesting? Support Converting Colors with the new Membership Option!

The pro membership hides all ads, plus gives you double the colors in the color bucket, and more awesome pro features!

[Learn more, Memberships starting at \\$2.50/m!](#)

**Follow me
on Twitter!**

@ConvertingColor