

Converting Colors

HunterLab(20.8192, 1.2990,
7.5688)

Have a look what the booklet for
HunterLab(20.8192, 1.2990, 7.5688)
contains.

HunterLab(20.7554, 1.1967, 7.5721)	3
<i>Conversions</i>	4
<i>Details</i>	6
<i>Harmonies</i>	12
<i>Previews</i>	24
<i>Color Blindness Simulation</i>	28
<i>CSS Examples</i>	31

Color

**HunterLab(20.7554, 1.1967,
7.5721)**

Conversions

Conversions Part 1

Format	Color
Hex	473826
RGB	71, 56, 38
RGB Percent	28%, 22%, 15%
CMY	0.7216, 0.7804, 0.8510
CMYK	0.00, 0.21, 0.46, 0.72
HSL	33°, 30%, 21%
HSV	33°, 46%, 28%
XYZ	4.3625, 4.3079, 2.4353
YIQ	58.4330, 14.7180, -2.4180

Conversions

Conversions Part 2

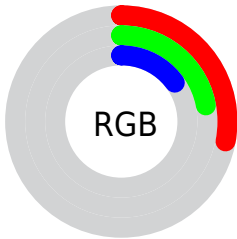
Format	Color
RYB	66, 71, 38
Decimal	4667430
CIELab	24.66, 3.74, 13.76
CIElCh	25, 14.261, 74.784
Yxy	4.3081, 0.3928, 0.3879
Android (android.graphics.Color)	4282857510 (0xFF473826)
YUV	58.4330, -10.0735, 11.0213
Hunter-Lab	20.7554, 1.1967, 7.5721

Details

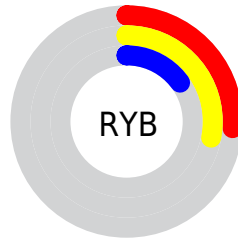
The HunterLab color **20.7554, 1.1967, 7.5721** is a dark color, and the websafe version is hex **333333**. A complement of this color would be **18.4745, -1.3183, -7.7704**, and the grayscale version is **20.7485, -1.1071, 1.1273**.

A 20% lighter version of the original color is **37.8393, 0.5659, 10.5035**, and **7.2171, 2.1090, 4.4840** is the 20% darker color. If you saturate the color by 10%, you get **19.9091, 1.9849, 8.4626**, and if you desaturate by 10%, it is **21.6364, 0.4977, 6.5100**.

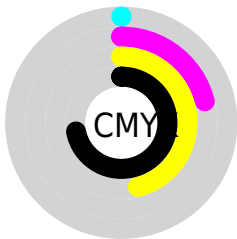
Distribution



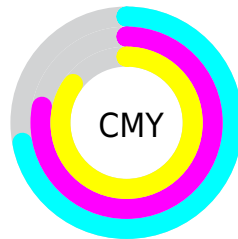
- Red (28%)
- Green (22%)
- Blue (15%)



- Red (26%)
- Yellow (28%)
- Blue (15%)



- Cyan (0%)
- Magenta (21%)
- Yellow (46%)
- Black (72%)



- Cyan (72%)
- Magenta (78%)
- Yellow (85%)

Brightness & Saturation Gradients

These gradients show how the HunterLab color 20.7554, 1.1967, 7.5721 changes by changing the brightness by 10 percent. The first figure shows a shift by +10% for each color and the second figure -10%.

Similar to the brightness gradients but the following saturation gradients show a change of the HunterLab color 20.7554, 1.1967, 7.5721 by changing the saturation by 10% instead.

■ 20.7554, 1.1967,
7.5721

■ 20.7554, 1.1967,
7.5721

■ 119.5504, -2.3145,
19.8040

■ 13.5917, 1.2891,
5.9999

■ 37.8197, 0.7751,
10.4830

■ 7.1863, 1.8858,
5.0304

■ 47.5464, 0.4711,
11.8582

0.0000, NaN, NaN

0.0000, NaN, NaN

■ 57.9882, 0.1145,
13.2054

0.0000, NaN, NaN

■ 69.0989, -0.2897,
14.5354

0.0000, NaN, NaN

■ 80.8406, -0.7376,
15.8557

0.0000, NaN, NaN

0.0000, NaN, NaN

■ 93.1810, -1.2260,

17.1715

0.0000, NaN, NaN

106.0923, -1.7524,
18.4866

20.7554, 1.1967,
7.5721

20.7554, 1.1967,
7.5721

19.9091, 1.9849,
8.4626

21.6364, 0.4977,
6.5100

19.0983, 2.8671,
9.1694

22.5485, -0.1129,
5.2873

18.3257, 3.8426,
9.6832

23.4903, -0.6402,
3.9163

17.5933, 4.9093,
9.9978

24.4598, -1.0887,
2.4085

16.8930, 6.0100,
10.2626

25.4552, -1.4631,
0.7746

■ 16.6524, 6.3950,
10.3731

■ 26.4750, -1.7682,
-0.9751

■ 27.5177, -2.0087,
-2.8316

■ 28.5819, -2.1890,
-4.7862

■ 29.6662, -2.3133,
-6.8314

Harmonies

Analogous

The Analogous color harmony consists of three colors that are next to each other on the color wheel.



20.7559, 5.3512, 6.1037



20.7554, 1.1967, 7.5721



20.7559, -3.2566, 7.5827

Triad

The Triadic color harmony groups three colors that are evenly spaced from another and form a triangle on the color wheel.



20.7559, 1.1959, 7.5724



20.7559, -8.7827, -1.0667



20.7559, 5.2999, -5.5518

Complementary

The Complementary color scheme is a pair of colors which are on the opposite of each other on the color wheel.



20.7554, 1.1967, 7.5721



18.4745, -1.3183, -7.7704

Split Complementary

Split-complementary colors differ from the complementary color scheme. The scheme consists of three colors, the original color and two neighbors of the complement color.



20.7559, 1.1305, -8.4328



20.7554, 1.1967, 7.5721



20.7559, -6.8638, -5.4947

Square

The Square scheme is like the rectangle color scheme, but the four colors are evenly spaced on the color wheel.



20.7559, 1.1959, 7.5724



20.7559, -8.7684, 3.1633



20.7559, -3.3167, -8.4099



20.7559, 7.8536, -1.1328

Rectangle

The Rectangle color scheme consists of four colors that form a rectangle on the color wheel.



20.7554, 1.1967, 7.5721



20.7559, -5.7880, 6.7858



20.7559, -3.3167, -8.4099



20.7559, 4.0260, -6.7700

Sweetspot

The Sweet Spot groups the original color and five complimentary colors.



20.7559, 1.1959, 7.5724



30.7860, -0.9531, 4.7267



17.2818, 10.4886, -0.8892



15.4926, -0.4488, 2.4896



64.8100, -3.4581, 3.5212



16.4960, -0.8802, 0.8963

Same Dimension

The Same Dimension uses a secret algorithm to generate beautiful new colors.



20.7559, 1.1959, 7.5724



25.7061, 2.7671, 11.1772



24.3819, -5.1726, 10.4742



12.7404, -0.5253, 1.4389



23.1080, 9.9699, 14.4136



55.3974, 28.2224, 34.6297

Inverse Universe

The Inverse Universe completely reimagines the original color for something new.



18.4745, -1.3183, -7.7704



22.0627, -1.1251, -13.5117



15.0815, 5.2204, -14.0509



12.5087, -0.7909, -0.1039



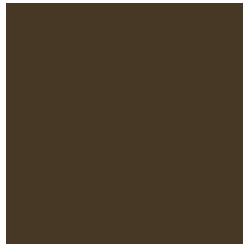
16.7377, 5.0459, -31.8133



39.0808, 17.1257, -85.8171

Previews

White Background



This preview shows how the HunterLab color 20.7554, 1.1967, 7.5721 looks on a white background.

Color Contrast Check

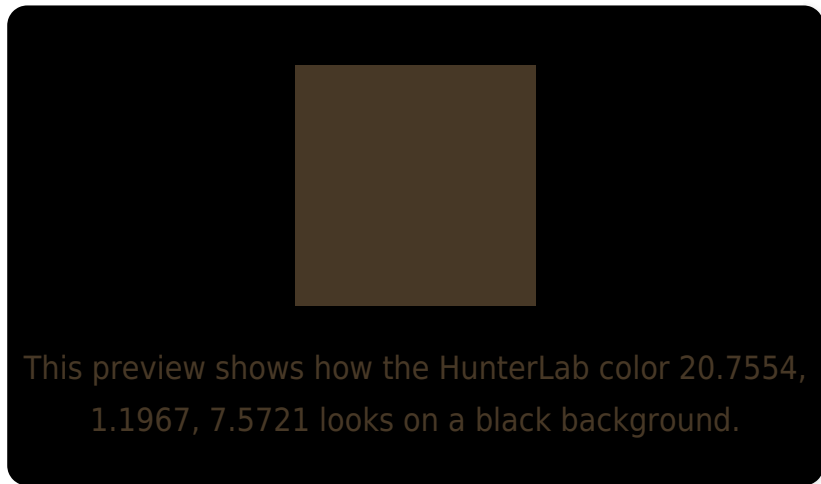
Large Text (above 18pt) WCAG AA ✓ Pass

Any Text WCAG AA ✓ Pass

Large Text (above 18pt) WCAG AAA ✓ Pass

Any Text WCAG AAA ✓ Pass

Black Background



Color Contrast Check

Large Text (above 18pt) WCAG AA × Fail

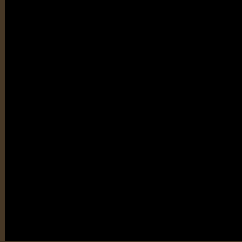
Any Text WCAG AA × Fail

Large Text (above 18pt) WCAG AAA × Fail

Any Text WCAG AAA × Fail

If you want to check with other color combinations, try the [Color Contrast Checker](#).

HunterLab 20.7554, 1.1967, 7.5721 Background



This preview shows how black text looks on a background with the HunterLab color 20.7554, 1.1967, 7.5721.

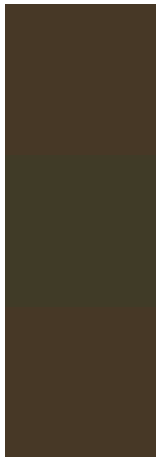


This preview shows how white text looks on a background with the HunterLab color 20.7554, 1.1967,

Color Blindness Simulation

Color vision deficiency is a very complex topic, and I could not describe the different causes any better than Wikipedia does, so if you want to learn more, you should check out their [article about color blindness](#).

Dichromacy



Original Color

20.7554, 1.1967, 7.5721

Protanopia

20.8911, -2.0019, 7.3905

Deuteranopia

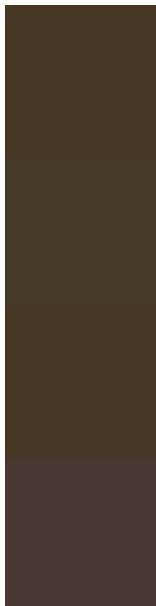
20.7554, 1.1967, 7.5721



Tritanopia

20.8813, 4.7507, 1.5841

Trichromacy



Original Color

20.7554, 1.1967, 7.5721

Protanomaly

20.8947, -0.7371, 7.4157

Deuteranomaly

20.7554, 1.1967, 7.5721

Tritanomaly

20.8545, 3.1873, 4.0020

Monochromacy



Original Color

20.7554, 1.1967, 7.5721

Achromatopsia

20.5697, -1.0975, 1.1176

Achromatomaly

20.5476, -0.2492, 3.6197

CSS Examples

Text

The CSS property to change the color of the text to HunterLab 20.7554, 1.1967, 7.5721 is called "color". The color property can be set on classes, ids or directly on the HTML element.

This example shows how text in the color `rgb(71, 56, 38)` looks like.

```
.text, #text, p{  
    color:rgb(71, 56, 38)  
}
```

If you want to add a text shadow in that color use the text-shadow property, you can generate a text shadow directly with our [CSS Text Shadow Generator](#).

Here you see how black text with a 4 pixel rgb(71, 56, 38) colored shadow looks like.

```
.shadow{ text-shadow: 4px 4px 2px rgb(71, 56, 38) }
```

Border

The CSS property to change the border of an element to HunterLab 20.7554, 1.1967, 7.5721 is called "border". The border property can be set on classes, ids or directly on the HTML element.

This example shows the color as border, it can be applied via the CSS property "border" or "border-color".

```
.border, #border, table{ border:4px solid rgb(71, 56, 38) }
```


If only the border color should be changed use the property border-color.

```
.border{ border-color:rgb(71, 56, 38) }
```

If you want to add a box shadow in that color use:

Here you see how a box with a 4 pixel rgb(71, 56, 38) colored shadow looks like.

```
.boxshadow{ -moz-box-shadow:4px 4px 4px  
4px rgb(71, 56, 38); -webkit-box-  
shadow:4px 4px 4px 4px rgb(71, 56, 38);  
box-shadow:4px 4px 4px 4px rgb(71, 56, 38)  
}
```

Background

The CSS property to change the background color of an element to HunterLab 20.7554, 1.1967, 7.5721 is called "background". The background property can be set on classes, ids or directly on the HTML element.

```
.background, #background, body{  
background: rgb(71, 56, 38) }
```

If only the background color should be changed can be used:

```
.background{ background-color: rgb(71, 56,  
38) }
```

This example shows the color as background, it is applied via the CSS property "background".

To optimize and compress your CSS code, you can use our [online CSS compressor and optimizer](#) based on csstidy. If you want to create a linear or radial gradient as background or border, check our [CSS Gradient Generator](#).

Hey! You found this booklet interesting? Support Converting Colors with the new Membership Option!

The pro membership hides all ads, plus gives you double the colors in the color bucket, and more awesome pro features!

[Learn more, Memberships starting at \\$2.50/m!](#)

**Follow me
on Twitter!**

@ConvertingColor