

Converting Colors

HunterLab(20.9791, 1.4205,
8.0490)

Have a look what the booklet for
HunterLab(20.9791, 1.4205, 8.0490)
contains.

HunterLab(20.9246, 1.7336, 7.9646)	3
<i>Conversions</i>	4
<i>Details</i>	6
<i>Harmonies</i>	12
<i>Previews</i>	24
<i>Color Blindness Simulation</i>	28
<i>CSS Examples</i>	31

Color

**HunterLab(20.9246, 1.7336,
7.9646)**

Conversions

Conversions Part 1

Format	Color
Hex	493825
RGB	73, 56, 37
RGB Percent	29%, 22%, 15%
CMY	0.7137, 0.7804, 0.8549
CMYK	0.00, 0.23, 0.49, 0.71
HSL	32°, 33%, 22%
HSV	32°, 49%, 29%
XYZ	4.4958, 4.3784, 2.3584
YIQ	58.9170, 16.2310, -2.3050

Conversions

Conversions Part 2

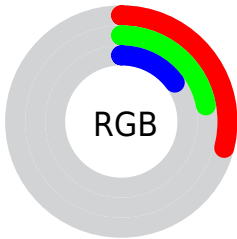
Format	Color
RYB	69, 73, 37
Decimal	4798501
CIELab	24.89, 4.60, 14.74
CIElCh	25, 15.441, 72.685
Yxy	4.3786, 0.4002, 0.3898
Android (android.graphics.Color)	4282988581 (0xFF493825)
YUV	58.9170, -10.8051, 12.3508
Hunter-Lab	20.9246, 1.7336, 7.9646

Details

The HunterLab color **20.9246, 1.7336, 7.9646** is a dark color, and the websafe version is hex **333333**. A complement of this color would be **18.7418, -1.5145, -8.4185**, and the grayscale version is **20.9168, -1.1161, 1.1365**.

A 20% lighter version of the original color is **38.1060, 1.4319, 11.0854**, and **7.4098, 2.7059, 4.6133** is the 20% darker color. If you saturate the color by 10%, you get **20.0363, 2.6308, 8.8167**, and if you desaturate by 10%, it is **21.8515, 0.9300, 6.9349**.

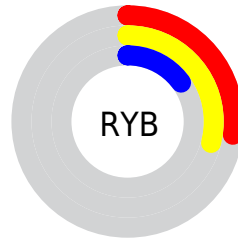
Distribution



Red (29%)

Green (22%)

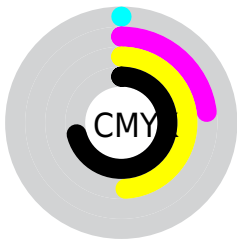
Blue (15%)



Red (27%)

Yellow (29%)

Blue (15%)

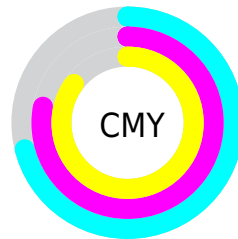


Cyan (0%)

Magenta (23%)

Yellow (49%)

Black (71%)



Cyan (71%)

Magenta (78%)

Yellow (85%)

Brightness & Saturation Gradients

These gradients show how the HunterLab color 20.9246, 1.7336, 7.9646 changes by changing the brightness by 10 percent. The first figure shows a shift by +10% for each color and the second figure -10%.

Similar to the brightness gradients but the following saturation gradients show a change of the HunterLab color 20.9246, 1.7336, 7.9646 by changing the saturation by 10% instead.

■ 20.9246, 1.7336,
7.9646

■ 20.9246, 1.7336,
7.9646

■ 119.8534, -1.3917,
20.7176

■ 13.7387, 1.7644,
6.3212

■ 38.0263, 1.4179,
11.0272

■ 7.3543, 2.3301,
5.1480

■ 47.7694, 1.1608,
12.4669

0.0000, NaN, NaN

■ 58.2263, 0.8482,
13.8735

0.0000, NaN, NaN

■ 69.3514, 0.4855,
15.2586

0.0000, NaN, NaN

■ 81.1066, 0.0770,
16.6305

0.0000, NaN, NaN

■ 93.4599, -0.3739,

0.0000, NaN, NaN

17.9949

0.0000, NaN, NaN

106.3836, -0.8642,
19.3562

20.9246, 1.7336,
7.9646

20.9246, 1.7336,
7.9646

20.0363, 2.6308,
8.8167

21.8515, 0.9300,
6.9349

19.1877, 3.6258,
9.4782

22.8129, 0.2192,
5.7396

18.3818, 4.7172,
9.9395

23.8071, -0.4039,
4.3918

17.6203, 5.8969,
10.2071

24.8319, -0.9442,
2.9040

16.8920, 7.0890,
10.4824

25.8851, -1.4066,
1.2877

■ 16.8432, 7.1702,
10.5042

■ 26.9650, -1.7964,
-0.4463

■ 28.0697, -2.1185,
-2.2881

■ 29.1979, -2.3778,
-4.2290

■ 30.3479, -2.5788,
-6.2607

Harmonies

Analogous

The Analogous color harmony consists of three colors that are next to each other on the color wheel.



20.9251, 6.1931, 6.3076



20.9246, 1.7336, 7.9646



20.9251, -3.1275, 8.0803

Triad

The Triadic color harmony groups three colors that are evenly spaced from another and form a triangle on the color wheel.



20.9251, 1.7327, 7.9649



20.9251, -9.4653, -0.9054



20.9251, 5.5920, -6.4933

Complementary

The Complementary color scheme is a pair of colors which are on the opposite of each other on the color wheel.



20.9246, 1.7336, 7.9646



18.7418, -1.5145, -8.4185

Split Complementary

Split-complementary colors differ from the complementary color scheme. The scheme consists of three colors, the original color and two neighbors of the complement color.



20.9251, 0.9711, -9.5035



20.9246, 1.7336, 7.9646



20.9251, -7.5448, -5.8170

Square

The Square scheme is like the rectangle color scheme, but the four colors are evenly spaced on the color wheel.



20.9251, 1.7327, 7.9649



20.9251, -9.3018, 3.6125



20.9251, -3.8232, -9.2311



20.9251, 8.5568, -1.6790

Rectangle

The Rectangle color scheme consists of four colors that form a rectangle on the color wheel.



20.9246, 1.7336, 7.9646



20.9251, -5.9221, 7.3174



20.9251, -3.8232, -9.2311



20.9251, 4.1637, -7.7941

Sweetspot

The Sweet Spot groups the original color and five complimentary colors.



20.9251, 1.7327, 7.9649



31.4727, -0.8012, 5.0098



17.3487, 11.6655, -1.2021



16.1770, -0.3737, 2.6923



65.8695, -3.5146, 3.5788



17.3419, -0.9253, 0.9422

Same Dimension

The Same Dimension uses a secret algorithm to generate beautiful new colors.



20.9251, 1.7327, 7.9649



25.8551, 3.6618, 11.6570



25.0835, -5.3339, 11.2257



12.7262, -0.5016, 1.4234



22.7558, 10.7329, 14.2099



54.5027, 30.2325, 34.1136

Inverse Universe

The Inverse Universe completely reimagines the original color for something new.



18.7418, -1.5145, -8.4185



22.3976, -1.3454, -14.4734



14.8618, 5.8064, -15.8872



12.5230, -0.8146, -0.0866



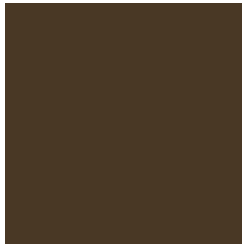
17.1438, 4.2381, -30.5772



40.1147, 14.9341, -82.3783

Previews

White Background



This preview shows how the HunterLab color 20.9246, 1.7336, 7.9646 looks on a white background.

Color Contrast Check

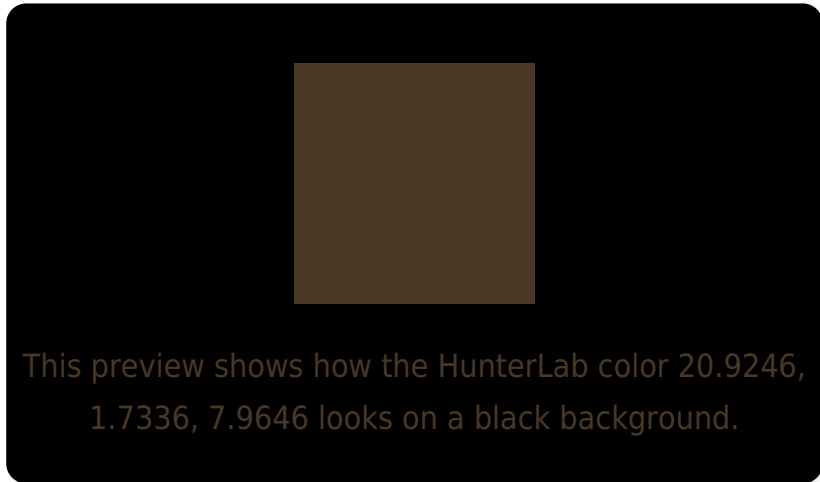
Large Text (above 18pt) WCAG AA ✓ Pass

Any Text WCAG AA ✓ Pass

Large Text (above 18pt) WCAG AAA ✓ Pass

Any Text WCAG AAA ✓ Pass

Black Background



Color Contrast Check

Large Text (above 18pt) WCAG AA × Fail

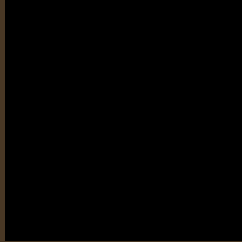
Any Text WCAG AA × Fail

Large Text (above 18pt) WCAG AAA × Fail

Any Text WCAG AAA × Fail

If you want to check with other color combinations, try the [Color Contrast Checker](#).

HunterLab 20.9246, 1.7336, 7.9646 Background



This preview shows how black text looks on a background with the HunterLab color 20.9246, 1.7336, 7.9646.

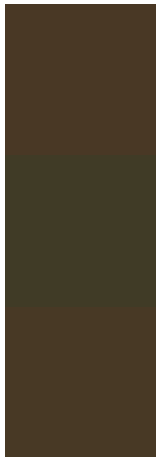


This preview shows how white text looks on a background with the HunterLab color 20.9246, 1.7336,

Color Blindness Simulation

Color vision deficiency is a very complex topic, and I could not describe the different causes any better than Wikipedia does, so if you want to learn more, you should check out their [article about color blindness](#).

Dichromacy



Original Color

20.9246, 1.7336, 7.9646

Protanopia

20.8755, -2.0884, 7.6187

Deuteranopia

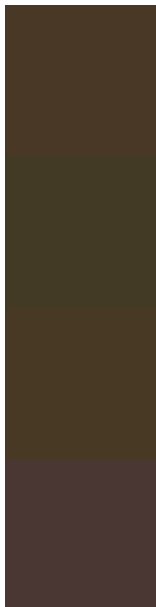
21.0655, 1.0084, 8.0719



Tritanopia

20.8508, 5.7886, 1.5668

Trichromacy



Original Color

20.9246, 1.7336, 7.9646

Protanomaly

20.8790, -0.8226, 7.6440

Deuteranomaly

21.0655, 1.0084, 8.0719

Tritanomaly

20.7954, 4.1138, 4.2825

Monochromacy



Original Color

20.9246, 1.7336, 7.9646

Achromatopsia

20.9129, -1.1159, 1.1362

Achromatomaly

20.8689, -0.3830, 3.9545

CSS Examples

Text

The CSS property to change the color of the text to HunterLab 20.9246, 1.7336, 7.9646 is called "color". The color property can be set on classes, ids or directly on the HTML element.

This example shows how text in the color `rgb(73, 56, 37)` looks like.

```
.text, #text, p{  
    color:rgb(73, 56, 37)  
}
```

If you want to add a text shadow in that color use the text-shadow property, you can generate a text shadow directly with our [CSS Text Shadow Generator](#).

Here you see how black text with a 4 pixel rgb(73, 56, 37) colored shadow looks like.

```
.shadow{ text-shadow: 4px 4px 2px rgb(73, 56, 37) }
```

Border

The CSS property to change the border of an element to HunterLab 20.9246, 1.7336, 7.9646 is called "border". The border property can be set on classes, ids or directly on the HTML element.

This example shows the color as border, it can be applied via the CSS property "border" or "border-color".

```
.border, #border, table{ border:4px solid rgb(73, 56, 37) }
```


If only the border color should be changed use the property border-color.

```
.border{ border-color:rgb(73, 56, 37) }
```

If you want to add a box shadow in that color use:

Here you see how a box with a 4 pixel rgb(73, 56, 37) colored shadow looks like.

```
.boxshadow{ -moz-box-shadow:4px 4px 4px  
4px rgb(73, 56, 37); -webkit-box-  
shadow:4px 4px 4px 4px rgb(73, 56, 37);  
box-shadow:4px 4px 4px 4px rgb(73, 56, 37)  
}
```

Background

The CSS property to change the background color of an element to HunterLab 20.9246, 1.7336, 7.9646 is called "background". The background property can be set on classes, ids or directly on the HTML element.

```
.background, #background, body{  
background: rgb(73, 56, 37) }
```

If only the background color should be changed can be used:

```
.background{ background-color: rgb(73, 56,  
37) }
```

This example shows the color as background, it is applied via the CSS property "background".

To optimize and compress your CSS code, you can use our [online CSS compressor and optimizer](#) based on csstidy. If you want to create a linear or radial gradient as background or border, check our [CSS Gradient Generator](#).

Hey! You found this booklet interesting? Support Converting Colors with the new Membership Option!

The pro membership hides all ads, plus gives you double the colors in the color bucket, and more awesome pro features!

[Learn more, Memberships starting at \\$2.50/m!](#)

**Follow me
on Twitter!**

@ConvertingColor