

Converting Colors

HunterLab(21.0813, 5.5988,
5.0860)

Have a look what the booklet for
HunterLab(21.0813, 5.5988, 5.0860)
contains.

HunterLab(20.9268, 5.5874, 5.0703)	3
<i>Conversions</i>	4
<i>Details</i>	6
<i>Harmonies</i>	12
<i>Previews</i>	24
<i>Color Blindness Simulation</i>	28
<i>CSS Examples</i>	31

Color

**HunterLab(20.9268, 5.5874,
5.0703)**

Conversions

Conversions Part 1

Format	Color
Hex	4E3530
RGB	78, 53, 48
RGB Percent	31%, 21%, 19%
CMY	0.6941, 0.7921, 0.8118
CMYK	0.00, 0.32, 0.38, 0.69
HSL	10°, 24%, 25%
HSV	10°, 38%, 31%
XYZ	4.9485, 4.3793, 3.3808
YIQ	59.9050, 16.5050, 3.7450

Conversions

Conversions Part 2

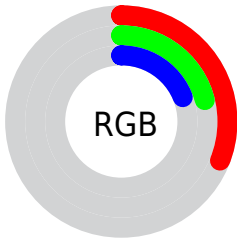
Format	Color
RYB	78, 54, 48
Decimal	5125424
CIELab	24.89, 10.46, 7.64
CIElCh	25, 12.950, 36.129
Yxy	4.3795, 0.3894, 0.3446
Android (android.graphics.Color)	4283315504 (0xFF4E3530)
YUV	59.9050, -5.8692, 15.8693
Hunter-Lab	20.9268, 5.5874, 5.0703

Details

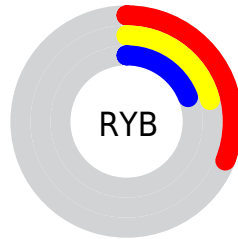
The HunterLab color **20.9268, 5.5874, 5.0703** is a dark color, and the websafe version is hex **663333**. A complement of this color would be **24.3789, -6.2254, -2.6162**, and the grayscale version is **21.2403, -1.1333, 1.1540**.

A 20% lighter version of the original color is **38.0942, 5.8689, 7.0944**, and **7.3175, 5.6695, 4.6083** is the 20% darker color. If you saturate the color by 10%, you get **19.4107, 7.6434, 5.9080**, and if you desaturate by 10%, it is **22.5456, 3.6209, 4.1840**.

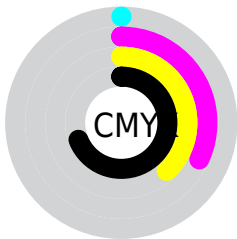
Distribution



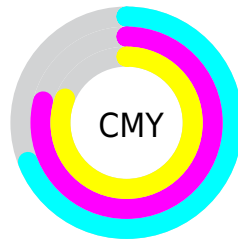
- Red (31%)
- Green (21%)
- Blue (19%)



- Red (31%)
- Yellow (21%)
- Blue (19%)



- Cyan (0%)
- Magenta (32%)
- Yellow (38%)
- Black (69%)



- Cyan (69%)
- Magenta (79%)
- Yellow (81%)

Brightness & Saturation Gradients

These gradients show how the HunterLab color 20.9268, 5.5874, 5.0703 changes by changing the brightness by 10 percent. The first figure shows a shift by +10% for each color and the second figure -10%.

Similar to the brightness gradients but the following saturation gradients show a change of the HunterLab color 20.9268, 5.5874, 5.0703 by changing the saturation by 10% instead.

■ 20.9268, 5.5874,
5.0703

■ 20.9268, 5.5874,
5.0703

■ 119.8574, 5.1197,
14.1155

■ 13.7406, 5.2036,
4.0425

■ 38.0290, 5.9947,
7.0467

■ 7.3565, 5.8029,
4.7028

■ 47.7723, 6.0603,
8.0268

0.0000, NaN, NaN

0.0000, NaN, NaN

■ 58.2294, 6.0508,
9.0120

0.0000, NaN, NaN

■ 69.3547, 5.9746,
10.0063

0.0000, NaN, NaN

■ 81.1101, 5.8386,
11.0123

0.0000, NaN, NaN

0.0000, NaN, NaN

■ 93.4635, 5.6480,

12.0318

0.0000, NaN, NaN

106.3873, 5.4072,
13.0659

■ 20.9268, 5.5874,
5.0703

■ 20.9268, 5.5874,
5.0703

■ 19.4107, 7.6434,
5.9080

■ 22.5456, 3.6209,
4.1840

■ 18.0110, 9.7778,
6.6767

■ 24.2527, 1.7493,
3.2623

■ 16.7453, 11.9595,
7.3508

■ 26.0376, -0.0317,
2.3154

■ 15.6320, 14.1348,
7.8994

■ 27.8911, -1.7288,
1.3501

■ 14.6892, 16.2217,
8.2922

■ 29.8057, -3.3503,
0.3709

■ 13.9160, 18.0475,
8.7440

■ 31.7750, -4.9044,
-0.6191

■ 13.8119, 18.2948,
8.8311

■ 33.7935, -6.3993,
-1.6181

■ 35.8568, -7.8422,
-2.6245

■ 37.9609, -9.2399,
-3.6378

Harmonies

Analogous

The Analogous color harmony consists of three colors that are next to each other on the color wheel.



20.9273, 7.2467, 1.9185



20.9268, 5.5874, 5.0703



20.9273, 2.1447, 6.8679

Triad

The Triadic color harmony groups three colors that are evenly spaced from another and form a triangle on the color wheel.



20.9273, 5.5865, 5.0706



20.9273, -7.8048, 3.9337



20.9273, -0.2756, -7.6981

Complementary

The Complementary color scheme is a pair of colors which are on the opposite of each other on the color wheel.



20.9268, 5.5874, 5.0703



24.3789, -6.2254, -2.6162

Split Complementary

Split-complementary colors differ from the complementary color scheme. The scheme consists of three colors, the original color and two neighbors of the complement color.



20.9273, -4.1919, -6.8771



20.9268, 5.5874, 5.0703



20.9273, -8.3451, 0.3286

Square

The Square scheme is like the rectangle color scheme, but the four colors are evenly spaced on the color wheel.



20.9273, 5.5865, 5.0706



20.9273, -5.5354, 6.3046



20.9273, -7.0716, -3.7433



20.9273, 3.6997, -5.8109

Rectangle

The Rectangle color scheme consists of four colors that form a rectangle on the color wheel.



20.9268, 5.5874, 5.0703



20.9273, -0.5867, 7.2892



20.9273, -7.0716, -3.7433



20.9273, -1.6436, -7.7339

Sweetspot

The Sweet Spot groups the original color and five complimentary colors.



20.9273, 5.5865, 5.0706



33.4346, 0.8817, 3.5595



20.5297, 11.0372, -5.3606



16.6290, 0.4996, 1.8085



66.9319, -3.5713, 3.6365



18.1947, -0.9708, 0.9886

Same Dimension

The Same Dimension uses a secret algorithm to generate beautiful new colors.



20.9273, 5.5865, 5.0706



25.7792, 9.8863, 7.7220



24.4282, -0.7880, 8.2517



13.1930, -0.0009, 1.1829



17.9607, 25.0190, 11.5053



42.5953, 64.4795, 27.3758

Inverse Universe

The Inverse Universe completely reimagines the original color for something new.



24.3789, -6.2254, -2.6162



31.3221, -9.2418, -4.6559



20.5051, -0.1304, -8.2081



13.6032, -1.3873, 0.2731



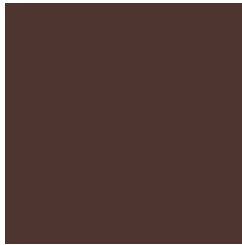
27.3044, -10.8708, -10.6613



65.6122, -25.3295, -27.3306

Previews

White Background



This preview shows how the HunterLab color 20.9268, 5.5874, 5.0703 looks on a white background.

Color Contrast Check

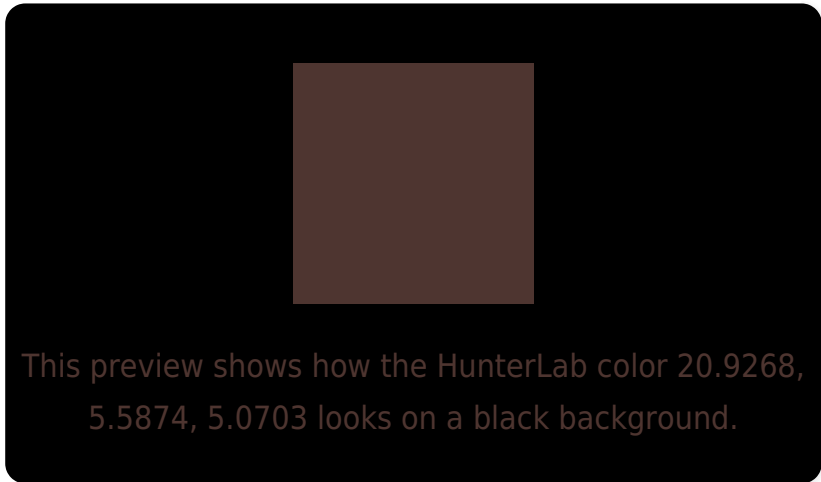
Large Text (above 18pt) WCAG AA ✓ Pass

Any Text WCAG AA ✓ Pass

Large Text (above 18pt) WCAG AAA ✓ Pass

Any Text WCAG AAA ✓ Pass

Black Background



Color Contrast Check

Large Text (above 18pt) WCAG AA × Fail

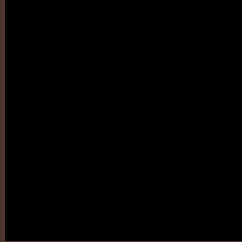
Any Text WCAG AA × Fail

Large Text (above 18pt) WCAG AAA × Fail

Any Text WCAG AAA × Fail

If you want to check with other color combinations, try the [Color Contrast Checker](#).

HunterLab 20.9268, 5.5874, 5.0703 Background



This preview shows how black text looks on a background with the HunterLab color 20.9268, 5.5874, 5.0703.

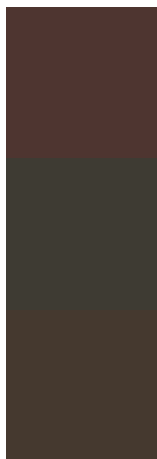


This preview shows how white text looks on a background with the HunterLab color 20.9268, 5.5874,

Color Blindness Simulation

Color vision deficiency is a very complex topic, and I could not describe the different causes any better than Wikipedia does, so if you want to learn more, you should check out their [article about color blindness](#).

Dichromacy



Original Color

20.9268, 5.5874, 5.0703

Protanopia

20.9549, -1.3362, 4.0273

Deuteranopia

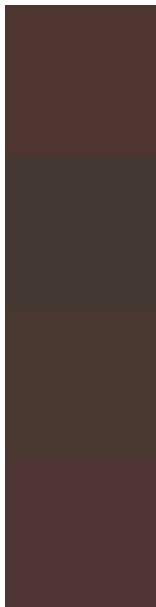
20.9683, 1.0213, 5.3341



Tritanopia

20.9852, 7.2201, 2.4867

Trichromacy



Original Color

20.9268, 5.5874, 5.0703

Protanomaly

20.9416, 1.0505, 4.3790

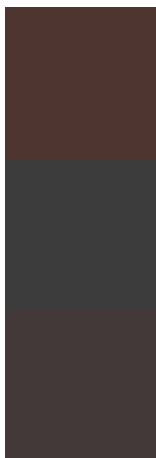
Deuteranomaly

21.0031, 2.3367, 5.3912

Tritanomaly

20.9172, 6.8742, 3.4623

Monochromacy



Original Color

20.9268, 5.5874, 5.0703

Achromatopsia

21.2570, -1.1342, 1.1549

Achromatomaly

20.9883, 1.4711, 2.3896

CSS Examples

Text

The CSS property to change the color of the text to HunterLab 20.9268, 5.5874, 5.0703 is called "color". The color property can be set on classes, ids or directly on the HTML element.

This example shows how text in the color `rgb(78, 53, 48)` looks like.

```
.text, #text, p{  
    color:rgb(78, 53, 48)  
}
```

If you want to add a text shadow in that color use the text-shadow property, you can generate a text shadow directly with our [CSS Text Shadow Generator](#).

Here you see how black text with a 4 pixel rgb(78, 53, 48) colored shadow looks like.

```
.shadow{ text-shadow: 4px 4px 2px rgb(78, 53, 48) }
```

Border

The CSS property to change the border of an element to HunterLab 20.9268, 5.5874, 5.0703 is called "border".

The border property can be set on classes, ids or directly on the HTML element.

This example shows the color as border, it can be applied via the CSS property "border" or "border-color".

```
.border, #border, table{ border:4px solid rgb(78, 53, 48) }
```


If only the border color should be changed use the property `border-color`.

```
.border{ border-color:rgb(78, 53, 48) }
```

If you want to add a box shadow in that color use:

Here you see how a box with a 4 pixel `rgb(78, 53, 48)` colored shadow looks like.

```
.boxshadow{ -moz-box-shadow:4px 4px 4px  
4px rgb(78, 53, 48); -webkit-box-  
shadow:4px 4px 4px 4px rgb(78, 53, 48);  
box-shadow:4px 4px 4px 4px rgb(78, 53, 48)  
}
```

Background

The CSS property to change the background color of an element to HunterLab 20.9268, 5.5874, 5.0703 is called "background". The background property can be set on classes, ids or directly on the HTML element.

```
.background, #background, body{  
background: rgb(78, 53, 48) }
```

If only the background color should be changed can be used:

```
.background{ background-color: rgb(78, 53,  
48) }
```

This example shows the color as background, it is applied via the CSS property "background".

To optimize and compress your CSS code, you can use our [online CSS compressor and optimizer](#) based on csstidy. If you want to create a linear or radial gradient as background or border, check our [CSS Gradient Generator](#).

Hey! You found this booklet interesting? Support Converting Colors with the new Membership Option!

The pro membership hides all ads, plus gives you double the colors in the color bucket, and more awesome pro features!

[Learn more, Memberships starting at \\$2.50/m!](#)

**Follow me
on Twitter!**

@ConvertingColor