

Converting Colors

HunterLab(21.1162, 0.3143,
4.4043)

Have a look what the booklet for
HunterLab(21.1162, 0.3143, 4.4043)
contains.

HunterLab(21.0943, 0.3476, 4.5227)	3
<i>Conversions</i>	4
<i>Details</i>	6
<i>Harmonies</i>	12
<i>Previews</i>	24
<i>Color Blindness Simulation</i>	28
<i>CSS Examples</i>	31

Color

**HunterLab(21.0943, 0.3476,
4.5227)**

Conversions

Conversions Part 1

Format	Color
Hex	433A32
RGB	67, 58, 50
RGB Percent	26%, 23%, 20%
CMY	0.7373, 0.7725, 0.8039
CMYK	0.00, 0.13, 0.25, 0.74
HSL	28°, 15%, 23%
HSV	28°, 25%, 26%
XYZ	4.4035, 4.4497, 3.6444
YIQ	59.7790, 7.9320, -0.5800

Conversions

Conversions Part 2

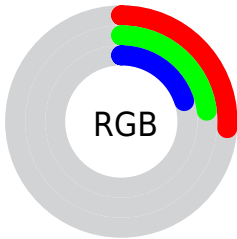
Format	Color
RYB	67, 65, 50
Decimal	4405810
CIELab	25.11, 2.40, 6.42
CIELCh	25, 6.852, 69.503
Yxy	4.4499, 0.3523, 0.3560
Android (android.graphics.Color)	4282595890 (0xFF433A32)
YUV	59.7790, -4.8210, 6.3328
Hunter-Lab	21.0943, 0.3476, 4.5227

Details

The HunterLab color **21.0943, 0.3476, 4.5227** is a dark color, and the websafe version is hex **333333**. A complement of this color would be **20.5212, -2.0542, -2.7333**, and the grayscale version is **21.1955, -1.1309, 1.1516**.

A 20% lighter version of the original color is **38.2002, -0.3423, 6.3568**, and **7.4491, 1.0579, 3.9230** is the 20% darker color. If you saturate the color by 10%, you get **20.1267, 1.1119, 5.6033**, and if you desaturate by 10%, it is **22.0954, -0.3421, 3.3269**.

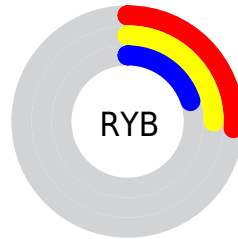
Distribution



Red (26%)

Green (23%)

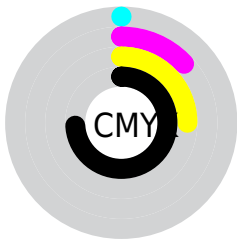
Blue (20%)



Red (26%)

Yellow (25%)

Blue (20%)

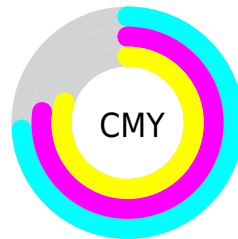


Cyan (0%)

Magenta (13%)

Yellow (25%)

Black (74%)



Cyan (74%)

Magenta (77%)

Yellow (80%)

Brightness & Saturation Gradients

These gradients show how the HunterLab color 21.0943, 0.3476, 4.5227 changes by changing the brightness by 10 percent. The first figure shows a shift by +10% for each color and the second figure -10%.

Similar to the brightness gradients but the following saturation gradients show a change of the HunterLab color 21.0943, 0.3476, 4.5227 by changing the saturation by 10% instead.

■ 21.0943, 0.3476,
4.5227

■ 21.0943, 0.3476,
4.5227

■ 120.1567, -3.8102,
12.9619

■ 13.8862, 0.5458,
3.6044

■ 38.2333, -0.2533,
6.3227

■ 7.5186, 0.9889,
3.9477

■ 47.9927, -0.6362,
7.2280

0.0000, NaN, NaN

0.0000, NaN, NaN

■ 58.4648, -1.0665,
8.1443

0.0000, NaN, NaN

■ 69.6042, -1.5400,
9.0746

0.0000, NaN, NaN

■ 81.3730, -2.0535,
10.0206

0.0000, NaN, NaN

0.0000, NaN, NaN

■ 93.7391, -2.6045,

10.9834

0.0000, NaN, NaN

106.6751, -3.1907,
11.9637

■ 21.0943, 0.3476,
4.5227

■ 21.0943, 0.3476,
4.5227

■ 20.1267, 1.1119,
5.6033

■ 22.0954, -0.3421,
3.3269

■ 19.1940, 1.9572,
6.5560

■ 23.1261, -0.9599,
2.0260

■ 18.2993, 2.8863,
7.3684

■ 24.1847, -1.5114,
0.6301

■ 17.4461, 3.9013,
8.0277

■ 25.2693, -2.0016,
-0.8517

■ 16.6374, 5.0019,
8.5219

■ 26.3779, -2.4351,
-2.4117

■ 15.8768, 6.1848,
8.8406

■ 27.5090, -2.8163,
-4.0428

■ 15.1580, 7.3945,
9.1215

■ 28.6612, -3.1495,
-5.7390

■ 14.8374, 7.9465,
9.2819

■ 29.8330, -3.4384,
-7.4947

■ 31.0234, -3.6866,
-9.3052

Harmonies

Analogous

The Analogous color harmony consists of three colors that are next to each other on the color wheel.



21.0948, 2.1735, 3.5094



21.0943, 0.3476, 4.5227



21.0948, -1.8079, 4.6841

Triad

The Triadic color harmony groups three colors that are evenly spaced from another and form a triangle on the color wheel.



21.0948, 0.3469, 4.5230



21.0948, -5.0676, 0.4857



21.0948, 1.5800, -2.1323

Complementary

The Complementary color scheme is a pair of colors which are on the opposite of each other on the color wheel.



21.0943, 0.3476, 4.5227



20.5212, -2.0542, -2.7333

Split Complementary

Split-complementary colors differ from the complementary color scheme. The scheme consists of three colors, the original color and two neighbors of the complement color.



21.0948, -0.4368, -3.1305



21.0943, 0.3476, 4.5227



21.0948, -4.2357, -1.5220

Square

The Square scheme is like the rectangle color scheme, but the four colors are evenly spaced on the color wheel.



21.0948, 0.3469, 4.5230



21.0948, -4.8767, 2.4850



21.0948, -2.5609, -2.8966



21.0948, 2.9051, -0.2821

Rectangle

The Rectangle color scheme consists of four colors that form a rectangle on the color wheel.



21.0943, 0.3476, 4.5227



21.0948, -3.1328, 4.3047



21.0948, -2.5609, -2.8966



21.0948, 0.9573, -2.5867

Sweetspot

The Sweet Spot groups the original color and five complimentary colors.



21.0948, 0.3469, 4.5230



29.6284, -1.0186, 3.1430



19.4705, 4.8577, -0.5448



15.0249, -0.4860, 1.6703



63.7533, -3.4017, 3.4638



15.6573, -0.8354, 0.8507

Same Dimension

The Same Dimension uses a secret algorithm to generate beautiful new colors.



21.0948, 0.3469, 4.5230



26.6489, 1.0197, 6.7134



23.1752, -3.0920, 6.5061



11.9141, -0.4045, 1.2766



21.1174, 12.7542, 13.2357



51.1285, 36.1372, 32.1378

Inverse Universe

The Inverse Universe completely reimagines the original color for something new.



20.5212, -2.0542, -2.7333



25.7379, -2.7850, -4.8126



18.4753, 1.4212, -5.6321



11.8121, -0.8330, -0.0136



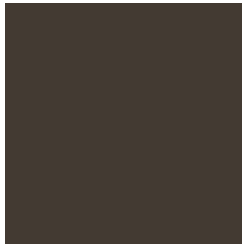
18.0399, 1.5735, -25.9450



43.0638, 7.8684, -70.8117

Previews

White Background



This preview shows how the HunterLab color 21.0943, 0.3476, 4.5227 looks on a white background.

Color Contrast Check

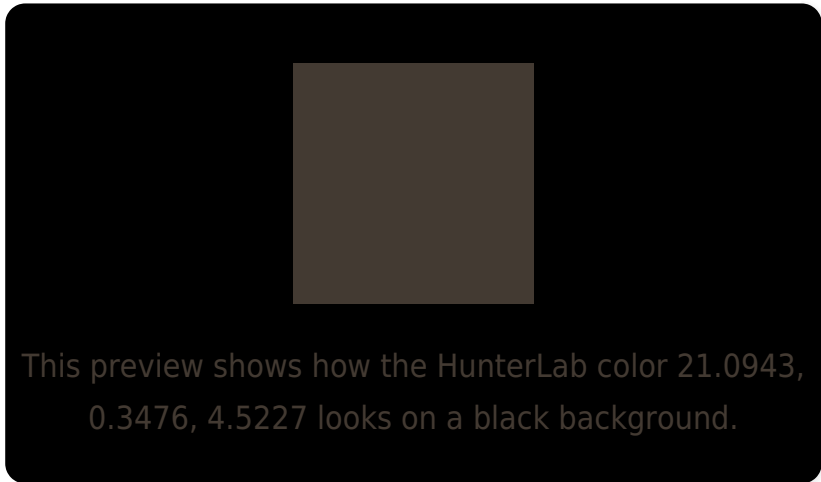
Large Text (above 18pt) WCAG AA ✓ Pass

Any Text WCAG AA ✓ Pass

Large Text (above 18pt) WCAG AAA ✓ Pass

Any Text WCAG AAA ✓ Pass

Black Background



Color Contrast Check

Large Text (above 18pt) WCAG AA × Fail

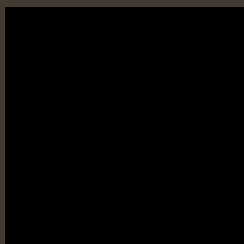
Any Text WCAG AA × Fail

Large Text (above 18pt) WCAG AAA × Fail

Any Text WCAG AAA × Fail

If you want to check with other color combinations, try the [Color Contrast Checker](#).

HunterLab 21.0943, 0.3476, 4.5227 Background



This preview shows how black text looks on a background with the HunterLab color 21.0943, 0.3476, 4.5227.



This preview shows how white text looks on a background with the HunterLab color 21.0943, 0.3476,

Color Blindness Simulation

Color vision deficiency is a very complex topic, and I could not describe the different causes any better than Wikipedia does, so if you want to learn more, you should check out their [article about color blindness](#).

Dichromacy



Original Color

21.0943, 0.3476, 4.5227

Protanopia

21.0326, -1.0656, 4.1127

Deuteranopia

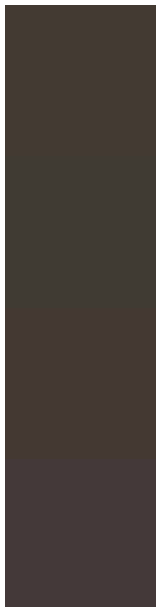
21.0280, 1.3416, 4.4724



Tritanopia

20.9624, 2.8298, 0.4794

Trichromacy



Original Color

21.0943, 0.3476, 4.5227

Protanomaly

21.1115, -0.7921, 4.1990

Deuteranomaly

20.9416, 1.0505, 4.3790

Tritanomaly

21.0965, 1.8801, 2.1536

Monochromacy



Original Color

21.0943, 0.3476, 4.5227

Achromatopsia

21.2570, -1.1342, 1.1549

Achromatomaly

21.1429, -0.4634, 2.5283

CSS Examples

Text

The CSS property to change the color of the text to HunterLab 21.0943, 0.3476, 4.5227 is called "color". The color property can be set on classes, ids or directly on the HTML element.

This example shows how text in the color `rgb(67, 58, 50)` looks like.

```
.text, #text, p{  
    color:rgb(67, 58, 50)  
}
```

If you want to add a text shadow in that color use the text-shadow property, you can generate a text shadow directly with our [CSS Text Shadow Generator](#).

Here you see how black text with a 4 pixel rgb(67, 58, 50) colored shadow looks like.

```
.shadow{ text-shadow: 4px 4px 2px rgb(67, 58, 50) }
```

Border

The CSS property to change the border of an element to HunterLab 21.0943, 0.3476, 4.5227 is called "border".

The border property can be set on classes, ids or directly on the HTML element.

This example shows the color as border, it can be applied via the CSS property "border" or "border-color".

```
.border, #border, table{ border:4px solid rgb(67, 58, 50) }
```


If only the border color should be changed use the property border-color.

```
.border{ border-color:rgb(67, 58, 50) }
```

If you want to add a box shadow in that color use:

Here you see how a box with a 4 pixel rgb(67, 58, 50) colored shadow looks like.

```
.boxshadow{ -moz-box-shadow:4px 4px 4px  
4px rgb(67, 58, 50); -webkit-box-  
shadow:4px 4px 4px 4px rgb(67, 58, 50);  
box-shadow:4px 4px 4px 4px rgb(67, 58, 50)  
}
```

Background

The CSS property to change the background color of an element to HunterLab 21.0943, 0.3476, 4.5227 is called "background". The background property can be set on classes, ids or directly on the HTML element.

```
.background, #background, body{  
background: rgb(67, 58, 50) }
```

If only the background color should be changed can be used:

```
.background{ background-color: rgb(67, 58,  
50) }
```

This example shows the color as background, it is applied via the CSS property "background".

To optimize and compress your CSS code, you can use our [online CSS compressor and optimizer](#) based on csstidy. If you want to create a linear or radial gradient as background or border, check our [CSS Gradient Generator](#).

Hey! You found this booklet interesting? Support Converting Colors with the new Membership Option!

The pro membership hides all ads, plus gives you double the colors in the color bucket, and more awesome pro features!

[Learn more, Memberships starting at \\$2.50/m!](#)

**Follow me
on Twitter!**

@ConvertingColor