

Converting Colors

HunterLab(21.2081, 8.4155,
2.1463)

Have a look what the booklet for
HunterLab(21.2081, 8.4155, 2.1463)
contains.

HunterLab(21.3432, 8.4085, 2.1787)	3
<i>Conversions</i>	4
<i>Details</i>	6
<i>Harmonies</i>	12
<i>Previews</i>	24
<i>Color Blindness Simulation</i>	28
<i>CSS Examples</i>	31

Color

**HunterLab(21.3432, 8.4085,
2.1787)**

Conversions

Conversions Part 1

Format	Color
Hex	52343A
RGB	82, 52, 58
RGB Percent	32%, 20%, 23%
CMY	0.6784, 0.7961, 0.7725
CMYK	0.00, 0.37, 0.29, 0.68
HSL	348°, 22%, 26%
HSV	348°, 37%, 32%
XYZ	5.4714, 4.5553, 4.5939
YIQ	61.6540, 15.9540, 8.2260

Conversions

Conversions Part 2

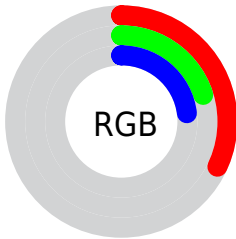
Format	Color
R_{YB}	82, 52, 58
Decimal	5387322
CIE Lab	25.43, 14.49, 1.80
CIE LCh	25, 14.599, 7.094
Yxy	4.5555, 0.3742, 0.3116
Android (android.graphics.Color)	4283577402 (0xFF52343A)
YUV	61.6540, -1.8014, 17.8434
Hunter-Lab	21.3432, 8.4085, 2.1787

Details

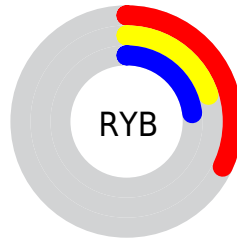
The HunterLab color **21.3432, 8.4085, 2.1787** is a dark color, and the websafe version is hex **663333**. A complement of this color would be **26.9937, -9.2942, 1.4517**, and the grayscale version is **21.8309, -1.1648, 1.1861**.

A 20% lighter version of the original color is **38.5346, 9.1226, 3.3415**, and **7.7555, 7.9711, 1.4634** is the 20% darker color. If you saturate the color by 10%, you get **19.5536, 11.2453, 2.5940**, and if you desaturate by 10%, it is **23.2882, 5.5998, 1.8850**.

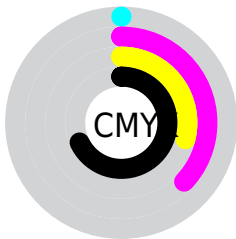
Distribution



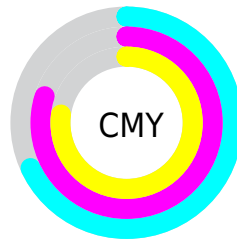
- Red (32%)
- Green (20%)
- Blue (23%)



- Red (32%)
- Yellow (20%)
- Blue (23%)



- Cyan (0%)
- Magenta (37%)
- Yellow (29%)
- Black (68%)



- Cyan (68%)
- Magenta (80%)
- Yellow (77%)

Brightness & Saturation Gradients

These gradients show how the HunterLab color 21.3432, 8.4085, 2.1787 changes by changing the brightness by 10 percent. The first figure shows a shift by +10% for each color and the second figure -10%.

Similar to the brightness gradients but the following saturation gradients show a change of the HunterLab color 21.3432, 8.4085, 2.1787 by changing the saturation by 10% instead.

■ 21.3432, 8.4085,
2.1787

■ 21.3432, 8.4085,
2.1787

■ 120.6007, 9.6609,
8.4083

■ 14.1029, 7.7731,
1.6466

■ 38.5366, 9.2713,
3.3467

■ 7.7526, 7.7923,
1.3860

■ 48.3198, 9.5446,
3.9803

0.0000, NaN, NaN

■ 58.8141, 9.7315,
4.6456

0.0000, NaN, NaN

■ 69.9744, 9.8424,
5.3413

0.0000, NaN, NaN

■ 81.7629, 9.8850,
6.0664

0.0000, NaN, NaN

■ 94.1479, 9.8656,

0.0000, NaN, NaN

107.1018, 9.7895,
7.6009

■ 21.3432, 8.4085,
2.1787

■ 21.3432, 8.4085,
2.1787

■ 19.5536, 11.2453,
2.5940

■ 23.2882, 5.5998,
1.8850

■ 17.9449, 14.0541,
3.1411

■ 25.3642, 2.8515,
1.6968

■ 16.5478, 16.7341,
3.8223

■ 27.5529, 0.1737,
1.5994

■ 15.3930, 19.1391,
4.6227

■ 29.8390, -2.4329,
1.5792

■ 14.5062, 21.0907,
5.5028

■ 32.2101, -4.9732,
1.6241

■ 13.7858, 22.8066,
6.3134

■ 34.6561, -7.4542,
1.7243

■ 13.5368, 23.4674,
6.5364

■ 37.1687, -9.8837,
1.8714

■ 39.7412, -12.2694,
2.0587

■ 42.3680, -14.6182,
2.2806

Harmonies

Analogous

The Analogous color harmony consists of three colors that are next to each other on the color wheel.



21.3437, 7.6725, -2.3950



21.3432, 8.4085, 2.1787



21.3437, 6.4161, 5.6550

Triad

The Triadic color harmony groups three colors that are evenly spaced from another and form a triangle on the color wheel.



21.3437, 8.4076, 2.1791



21.3437, -6.2367, 6.8618



21.3437, -4.4879, -8.1776

Complementary

The Complementary color scheme is a pair of colors which are on the opposite of each other on the color wheel.



21.3432, 8.4085, 2.1787



26.9937, -9.2942, 1.4517

Split Complementary

Split-complementary colors differ from the complementary color scheme. The scheme consists of three colors, the original color and two neighbors of the complement color.



21.3437, -7.7721, -4.5877



21.3432, 8.4085, 2.1787



21.3437, -8.7203, 4.1954

Square

The Square scheme is like the rectangle color scheme, but the four colors are evenly spaced on the color wheel.



21.3437, 8.4076, 2.1791



21.3437, -2.2258, 7.9602



21.3437, -9.2576, 0.0918



21.3437, -0.0320, -9.0373

Rectangle

The Rectangle color scheme consists of four colors that form a rectangle on the color wheel.



21.3432, 8.4085, 2.1787



21.3437, 3.9023, 7.1073



21.3437, -9.2576, 0.0918



21.3437, -5.7537, -7.2180

Sweetspot

The Sweet Spot groups the original color and five complimentary colors.



21.3437, 8.4076, 2.1791



34.9996, 1.9185, 2.1615



21.4521, 10.1511, -8.6664



17.2783, 1.0709, 1.0774



67.9972, -3.6282, 3.6944



19.0543, -1.0167, 1.0353

Same Dimension

The Same Dimension uses a secret algorithm to generate beautiful new colors.



21.3437, 8.4076, 2.1791



26.0688, 14.4754, 3.3637



23.1937, 3.8051, 6.0528



13.8205, 0.3770, 0.8234



17.4065, 30.1182, 8.8522



41.6708, 71.8435, 23.1985

Inverse Universe

The Inverse Universe completely reimagines the original color for something new.



21.3437, 8.4076, 2.1791



26.0688, 14.4754, 3.3637



24.7073, -4.7894, -4.0153



13.8205, 0.3770, 0.8234



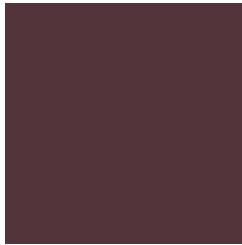
17.4065, 30.1182, 8.8522



41.6708, 71.8435, 23.1985

Previews

White Background



This preview shows how the HunterLab color 21.3432, 8.4085, 2.1787 looks on a white background.

Color Contrast Check

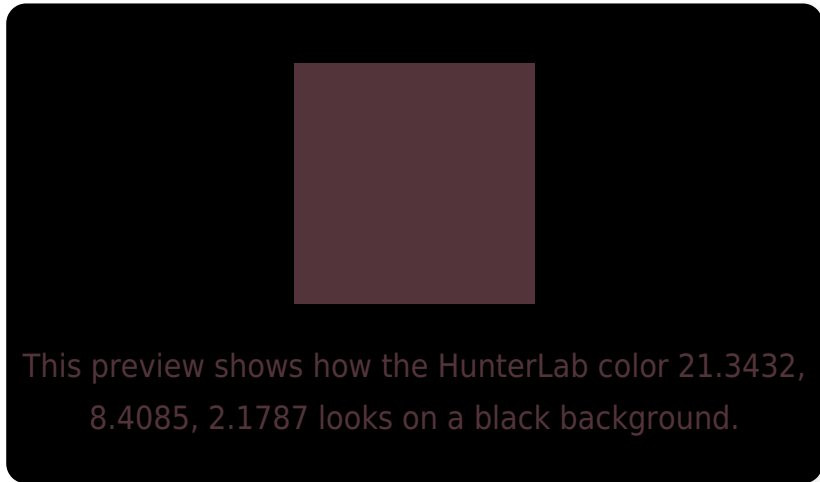
Large Text (above 18pt) WCAG AA ✓ Pass

Any Text WCAG AA ✓ Pass

Large Text (above 18pt) WCAG AAA ✓ Pass

Any Text WCAG AAA ✓ Pass

Black Background



Color Contrast Check

Large Text (above 18pt) WCAG AA × Fail

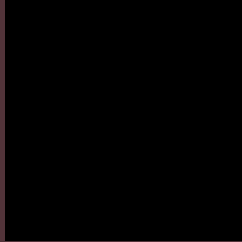
Any Text WCAG AA × Fail

Large Text (above 18pt) WCAG AAA × Fail

Any Text WCAG AAA × Fail

If you want to check with other color combinations, try the [Color Contrast Checker](#).

HunterLab 21.3432, 8.4085, 2.1787 Background



This preview shows how black text looks on a background with the HunterLab color 21.3432, 8.4085, 2.1787.



This preview shows how white text looks on a background with the HunterLab color 21.3432, 8.4085,

Color Blindness Simulation

Color vision deficiency is a very complex topic, and I could not describe the different causes any better than Wikipedia does, so if you want to learn more, you should check out their [article about color blindness](#).

Dichromacy



Original Color

21.3432, 8.4085, 2.1787

Protanopia

21.4072, -0.4612, 0.1585

Deuteranopia

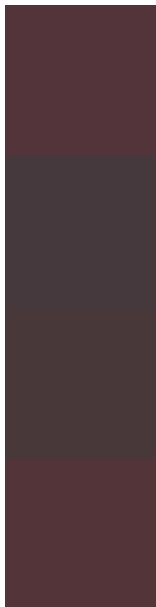
21.5691, 1.0371, 2.6685



Tritanopia

21.2963, 8.1727, 2.8496

Trichromacy



Original Color

21.3432, 8.4085, 2.1787

Protanomaly

21.2800, 2.6849, 0.8590

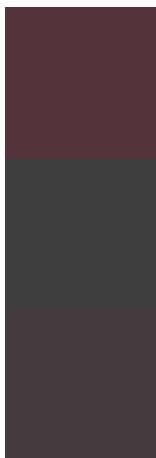
Deuteranomaly

21.3078, 3.7626, 2.4247

Tritanomaly

21.3195, 8.2895, 2.5171

Monochromacy



Original Color

21.3432, 8.4085, 2.1787

Achromatopsia

21.9481, -1.1711, 1.1925

Achromatomaly

21.5134, 2.2578, 1.1287

CSS Examples

Text

The CSS property to change the color of the text to HunterLab 21.3432, 8.4085, 2.1787 is called "color". The color property can be set on classes, ids or directly on the HTML element.

This example shows how text in the color `rgb(82, 52, 58)` looks like.

```
.text, #text, p{  
    color:rgb(82, 52, 58)  
}
```

If you want to add a text shadow in that color use the text-shadow property, you can generate a text shadow directly with our [CSS Text Shadow Generator](#).

Here you see how black text with a 4 pixel rgb(82, 52, 58) colored shadow looks like.

```
.shadow{ text-shadow: 4px 4px 2px rgb(82, 52, 58) }
```

Border

The CSS property to change the border of an element to HunterLab 21.3432, 8.4085, 2.1787 is called "border". The border property can be set on classes, ids or directly on the HTML element.

This example shows the color as border, it can be applied via the CSS property "border" or "border-color".

```
.border, #border, table{ border:4px solid rgb(82, 52, 58) }
```


If only the border color should be changed use the property border-color.

```
.border{ border-color:rgb(82, 52, 58) }
```

If you want to add a box shadow in that color use:

Here you see how a box with a 4 pixel rgb(82, 52, 58) colored shadow looks like.

```
.boxshadow{ -moz-box-shadow:4px 4px 4px  
4px rgb(82, 52, 58); -webkit-box-  
shadow:4px 4px 4px 4px rgb(82, 52, 58);  
box-shadow:4px 4px 4px 4px rgb(82, 52, 58)  
}
```

Background

The CSS property to change the background color of an element to HunterLab 21.3432, 8.4085, 2.1787 is called "background". The background property can be set on classes, ids or directly on the HTML element.

```
.background, #background, body{  
background: rgb(82, 52, 58) }
```

If only the background color should be changed can be used:

```
.background{ background-color: rgb(82, 52,  
58) }
```

This example shows the color as background, it is applied via the CSS property "background".

To optimize and compress your CSS code, you can use our [online CSS compressor and optimizer](#) based on csstidy. If you want to create a linear or radial gradient as background or border, check our [CSS Gradient Generator](#).

Hey! You found this booklet interesting? Support Converting Colors with the new Membership Option!

The pro membership hides all ads, plus gives you double the colors in the color bucket, and more awesome pro features!

[Learn more, Memberships starting at \\$2.50/m!](#)

**Follow me
on Twitter!**

@ConvertingColor