

Converting Colors

HunterLab(21.2556, 6.8676,
3.4828)

Have a look what the booklet for
HunterLab(21.2556, 6.8676, 3.4828)
contains.

HunterLab(21.2556, 6.8676, 3.4828)	3
<i>Conversions</i>	4
<i>Details</i>	6
<i>Harmonies</i>	12
<i>Previews</i>	24
<i>Color Blindness Simulation</i>	28
<i>CSS Examples</i>	31

Color

**HunterLab(21.2556, 6.8676,
3.4828)**

Conversions

Conversions Part 1

Format	Color
Hex	503536
RGB	80, 53, 54
RGB Percent	31%, 21%, 21%
CMY	0.6863, 0.7921, 0.7882
CMYK	0.00, 0.34, 0.32, 0.69
HSL	358°, 20%, 26%
HSV	358°, 34%, 31%
XYZ	5.2472, 4.5180, 4.0855
YIQ	61.1870, 15.7710, 6.0350

Conversions

Conversions Part 2

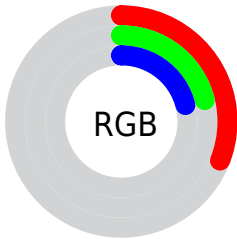
Format	Color
R_{YB}	80, 53, 54
Decimal	5256502
CIE Lab	25.32, 12.30, 4.28
CIE LCh	25, 13.024, 19.169
Yxy	4.5182, 0.3788, 0.3262
Android (android.graphics.Color)	4283446582 (0xFF503536)
YUV	61.1870, -3.5432, 16.4990
Hunter-Lab	21.2556, 6.8676, 3.4828

Details

The HunterLab color **21.2556, 6.8676, 3.4828** is a dark color, and the websafe version is hex **663333**. A complement of this color would be **26.5684, -7.8746, -0.2747**, and the grayscale version is **21.6751, -1.1565, 1.1777**.

A 20% lighter version of the original color is **38.4704, 7.4354, 4.8606**, and **7.5803, 6.6467, 2.5413** is the 20% darker color. If you saturate the color by 10%, you get **19.4474, 9.5263, 4.1762**, and if you desaturate by 10%, it is **23.2115, 4.2790, 2.8448**.

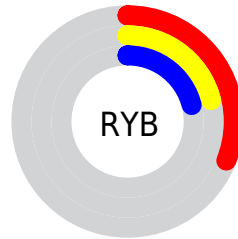
Distribution



Red (31%)

Green (21%)

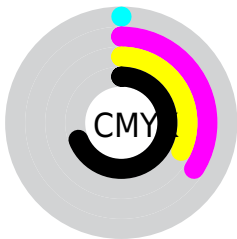
Blue (21%)



Red (31%)

Yellow (21%)

Blue (21%)

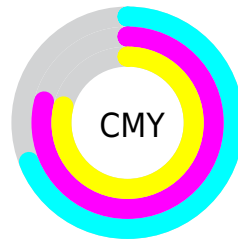


Cyan (0%)

Magenta (34%)

Yellow (32%)

Black (69%)



Cyan (69%)

Magenta (79%)

Yellow (79%)

Brightness & Saturation Gradients

These gradients show how the HunterLab color 21.2556, 6.8676, 3.4828 changes by changing the brightness by 10 percent. The first figure shows a shift by +10% for each color and the second figure -10%.

Similar to the brightness gradients but the following saturation gradients show a change of the HunterLab color 21.2556, 6.8676, 3.4828 by changing the saturation by 10% instead.

■ 21.2556, 6.8676,
3.4828

■ 21.2556, 6.8676,
3.4828

■ 120.4446, 7.1829,
10.8797

■ 14.0266, 6.3686,
2.7493

■ 38.4299, 7.4826,
4.9826

■ 7.6712, 6.5813,
2.7285

■ 48.2047, 7.6428,
5.7595

0.0000, NaN, NaN

0.0000, NaN, NaN

■ 58.6913, 7.7227,
6.5574

0.0000, NaN, NaN

■ 69.8442, 7.7316,
7.3773

0.0000, NaN, NaN

■ 81.6258, 7.6768,
8.2195

0.0000, NaN, NaN

0.0000, NaN, NaN

■ 94.0041, 7.5641,

9.0841

0.0000, NaN, NaN

106.9517, 7.3981,
9.9709

■ 21.2556, 6.8676,
3.4828

■ 21.2556, 6.8676,
3.4828

■ 19.4474, 9.5263,
4.1762

■ 23.2115, 4.2790,
2.8448

■ 17.8116, 12.2168,
4.9173

■ 25.2918, 1.7793,
2.2607

■ 16.3788, 14.8595,
5.6881

■ 27.4790, -0.6304,
1.7270

■ 15.1805, 17.3281,
6.4537

■ 29.7587, -2.9558,
1.2382

■ 14.2452, 19.4529,
7.1619

■ 32.1192, -5.2055,
0.7887

■ 13.5318, 21.2372,
7.7317

■ 34.5510, -7.3894,
0.3732

■ 13.0842, 22.4566,
8.0706

■ 37.0465, -9.5168,
-0.0131

■ 39.5992, -11.5964,
-0.3744

■ 42.2040, -13.6359,
-0.7142

Harmonies

Analogous

The Analogous color harmony consists of three colors that are next to each other on the color wheel.



21.2561, 7.2079, -0.3065



21.2556, 6.8676, 3.4828



21.2561, 4.2894, 6.1007

Triad

The Triadic color harmony groups three colors that are evenly spaced from another and form a triangle on the color wheel.



21.2561, 6.8667, 3.4832



21.2561, -6.7971, 5.5135



21.2561, -2.6018, -7.6430

Complementary

The Complementary color scheme is a pair of colors which are on the opposite of each other on the color wheel.



21.2556, 6.8676, 3.4828



26.5684, -7.8746, -0.2747

Split Complementary

Split-complementary colors differ from the complementary color scheme. The scheme consists of three colors, the original color and two neighbors of the complement color.



21.2561, -6.0653, -5.3625



21.2556, 6.8676, 3.4828



21.2561, -8.3620, 2.5234

Square

The Square scheme is like the rectangle color scheme, but the four colors are evenly spaced on the color wheel.



21.2561, 6.8667, 3.4832



21.2561, -3.6716, 7.1095



21.2561, -8.1047, -1.4659



21.2561, 1.5257, -7.2511

Rectangle

The Rectangle color scheme consists of four colors that form a rectangle on the color wheel.



21.2556, 6.8676, 3.4828



21.2561, 1.7523, 7.0583



21.2561, -8.1047, -1.4659



21.2561, -3.8765, -7.1486

Sweetspot

The Sweet Spot groups the original color and five complimentary colors.



21.2561, 6.8667, 3.4832



34.3733, 1.2601, 2.7407



21.8469, 10.1092, -6.9578



17.3868, 0.7746, 1.4255



67.9972, -3.6282, 3.6944



19.0543, -1.0167, 1.0353

Same Dimension

The Same Dimension uses a secret algorithm to generate beautiful new colors.



21.2561, 6.8667, 3.4832



26.2194, 11.7715, 5.3005



24.0010, 1.5049, 6.4946



13.8053, 0.2948, 1.0406



17.2759, 29.6345, 10.7831



41.4524, 71.0338, 26.4339

Inverse Universe

The Inverse Universe completely reimagines the original color for something new.



21.2561, 6.8667, 3.4832



26.2194, 11.7715, 5.3005



23.3503, -2.8365, -4.9320



13.8053, 0.2948, 1.0406



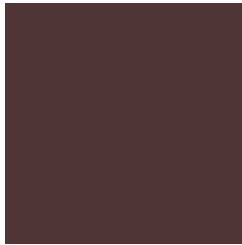
17.2759, 29.6345, 10.7831



41.4524, 71.0338, 26.4339

Previews

White Background



This preview shows how the HunterLab color 21.2556, 6.8676, 3.4828 looks on a white background.

Color Contrast Check

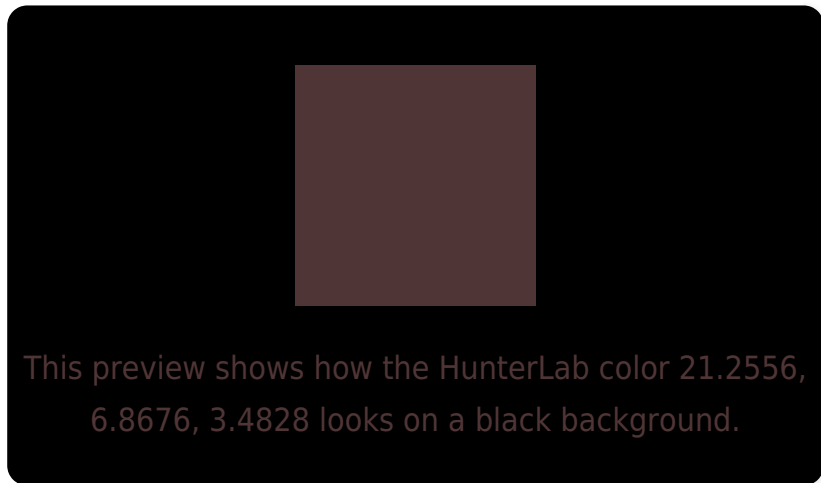
Large Text (above 18pt) WCAG AA ✓ Pass

Any Text WCAG AA ✓ Pass

Large Text (above 18pt) WCAG AAA ✓ Pass

Any Text WCAG AAA ✓ Pass

Black Background



Color Contrast Check

Large Text (above 18pt) WCAG AA × Fail

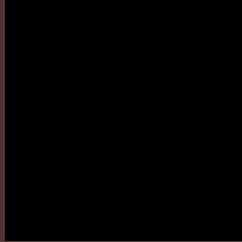
Any Text WCAG AA × Fail

Large Text (above 18pt) WCAG AAA × Fail

Any Text WCAG AAA × Fail

If you want to check with other color combinations, try the [Color Contrast Checker](#).

HunterLab 21.2556, 6.8676, 3.4828 Background



This preview shows how black text looks on a background with the HunterLab color 21.2556, 6.8676, 3.4828.



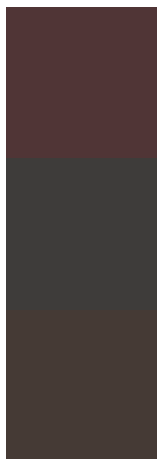
This preview shows how white text looks on a background with the HunterLab color 21.2556, 6.8676,

3.4828.

Color Blindness Simulation

Color vision deficiency is a very complex topic, and I could not describe the different causes any better than Wikipedia does, so if you want to learn more, you should check out their [article about color blindness](#).

Dichromacy



Original Color

21.2556, 6.8676, 3.4828

Protanopia

21.3573, -0.8835, 2.0321

Deuteranopia

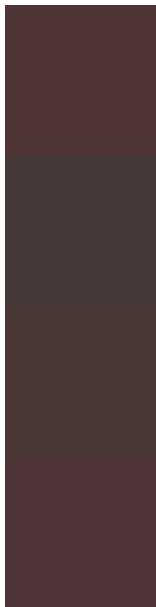
21.3269, 1.2615, 3.7999



Tritanopia

21.3239, 7.2154, 2.5032

Trichromacy



Original Color

21.2556, 6.8676, 3.4828

Protanomaly

21.1822, 2.1657, 2.2555

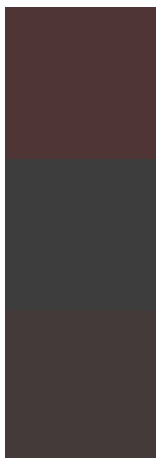
Deuteranomaly

21.2176, 3.2881, 3.7198

Tritanomaly

21.3007, 7.0974, 2.8356

Monochromacy



Original Color

21.2556, 6.8676, 3.4828

Achromatopsia

21.6021, -1.1526, 1.1737

Achromatomaly

21.3554, 1.5844, 2.0732

CSS Examples

Text

The CSS property to change the color of the text to HunterLab 21.2556, 6.8676, 3.4828 is called "color". The color property can be set on classes, ids or directly on the HTML element.

This example shows how text in the color `rgb(80, 53, 54)` looks like.

```
.text, #text, p{  
    color:rgb(80, 53, 54)  
}
```

If you want to add a text shadow in that color use the text-shadow property, you can generate a text shadow directly with our [CSS Text Shadow Generator](#).

Here you see how black text with a 4 pixel rgb(80, 53, 54) colored shadow looks like.

```
.shadow{ text-shadow: 4px 4px 2px rgb(80, 53, 54) }
```

Border

The CSS property to change the border of an element to HunterLab 21.2556, 6.8676, 3.4828 is called "border".

The border property can be set on classes, ids or directly on the HTML element.

This example shows the color as border, it can be applied via the CSS property "border" or "border-color".

```
.border, #border, table{ border:4px solid rgb(80, 53, 54) }
```


If only the border color should be changed use the property `border-color`.

```
.border{ border-color:rgb(80, 53, 54) }
```

If you want to add a box shadow in that color use:

Here you see how a box with a 4 pixel `rgb(80, 53, 54)` colored shadow looks like.

```
.boxshadow{ -moz-box-shadow:4px 4px 4px  
4px rgb(80, 53, 54); -webkit-box-  
shadow:4px 4px 4px 4px rgb(80, 53, 54);  
box-shadow:4px 4px 4px 4px rgb(80, 53, 54)  
}
```

Background

The CSS property to change the background color of an element to HunterLab 21.2556, 6.8676, 3.4828 is called "background". The background property can be set on classes, ids or directly on the HTML element.

```
.background, #background, body{  
background: rgb(80, 53, 54) }
```

If only the background color should be changed can be used:

```
.background{ background-color: rgb(80, 53,  
54) }
```

This example shows the color as background, it is applied via the CSS property "background".

To optimize and compress your CSS code, you can use our [online CSS compressor and optimizer](#) based on csstidy. If you want to create a linear or radial gradient as background or border, check our [CSS Gradient Generator](#).

Hey! You found this booklet
interesting? Support Converting
Colors with the new Membership
Option!

The pro membership hides all ads, plus gives you
double the colors in the color bucket, and more
awesome pro features!

[Learn more, Memberships starting at \\$2.50/m!](#)

**Follow me
on Twitter!**

@ConvertingColor