

Converting Colors

HunterLab(21.3981, 8.4722,
0.5076)

Have a look what the booklet for
HunterLab(21.3981, 8.4722, 0.5076)
contains.

HunterLab(21.3380, 8.5912, 0.6355)	3
<i>Conversions</i>	4
<i>Details</i>	6
<i>Harmonies</i>	12
<i>Previews</i>	24
<i>Color Blindness Simulation</i>	28
<i>CSS Examples</i>	31

Color

**HunterLab(21.3380, 8.5912,
0.6355)**

Conversions

Conversions Part 1

Format	Color
Hex	51343E
RGB	81, 52, 62
RGB Percent	32%, 20%, 24%
CMY	0.6824, 0.7961, 0.7569
CMYK	0.00, 0.36, 0.23, 0.68
HSL	339°, 22%, 26%
HSV	339°, 36%, 32%
XYZ	5.4908, 4.5531, 5.1469
YIQ	61.8110, 14.0740, 9.2580

Conversions

Conversions Part 2

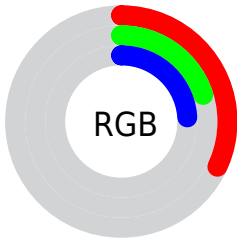
Format	Color
R_{YB}	81, 52, 62
Decimal	5321790
CIE Lab	25.42, 14.74, -0.90
CIE LCh	25, 14.772, 356.519
Yxy	4.5533, 0.3615, 0.2997
Android (android.graphics.Color)	4283511870 (0xFF51343E)
YUV	61.8110, 0.0932, 16.8288
Hunter-Lab	21.3380, 8.5912, 0.6355

Details

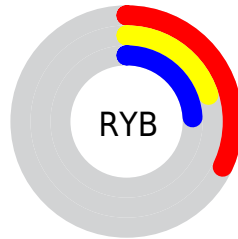
The HunterLab color **21.3380, 8.5912, 0.6355** is a dark color, and the websafe version is hex **663333**. A complement of this color would be **26.5894, -9.6349, 2.9223**, and the grayscale version is **21.8793, -1.1674, 1.1887**.

A 20% lighter version of the original color is **38.5397, 9.3575, 1.6541**, and **7.7411, 8.1435, -0.1564** is the 20% darker color. If you saturate the color by 10%, you get **19.5851, 11.4903, 0.6722**, and if you desaturate by 10%, it is **23.2394, 5.7002, 0.7484**.

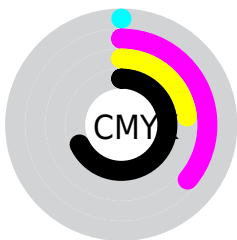
Distribution



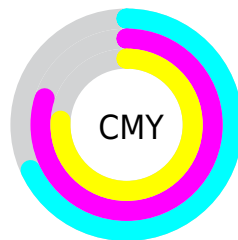
- Red (32%)
- Green (20%)
- Blue (24%)



- Red (32%)
- Yellow (20%)
- Blue (24%)



- Cyan (0%)
- Magenta (36%)
- Yellow (23%)
- Black (68%)



- Cyan (68%)
- Magenta (80%)
- Yellow (76%)

Brightness & Saturation Gradients

These gradients show how the HunterLab color 21.3380, 8.5912, 0.6355 changes by changing the brightness by 10 percent. The first figure shows a shift by +10% for each color and the second figure -10%.

Similar to the brightness gradients but the following saturation gradients show a change of the HunterLab color 21.3380, 8.5912, 0.6355 by changing the saturation by 10% instead.

■ 21.3380, 8.5912,
0.6355

■ 21.3380, 8.5912,
0.6355

■ 120.5914, 9.9542,
5.6359

■ 14.0984, 7.9399,
0.3078

■ 38.5302, 9.4833,
1.4599

■ 7.7478, 7.9512,
-0.0582

■ 48.3129, 9.7698,
1.9433

0.0000, NaN, NaN

0.0000, NaN, NaN

■ 58.8068, 9.9695,
2.4687

0.0000, NaN, NaN

■ 69.9666, 10.0923,
3.0330

0.0000, NaN, NaN

■ 81.7548, 10.1464,
3.6338

0.0000, NaN, NaN

0.0000, NaN, NaN

■ 94.1393, 10.1381,

4.2690

0.0000, NaN, NaN

107.0929, 10.0726,
4.9369

■ 21.3380, 8.5912,
0.6355

■ 21.3380, 8.5912,
0.6355

■ 19.5851, 11.4903,
0.6722

■ 23.2394, 5.7002,
0.7484

■ 18.0044, 14.3392,
0.8839

■ 25.2666, 2.8523,
0.9845

■ 16.6243, 17.0380,
1.2946

■ 27.4024, 0.0609,
1.3228

■ 15.4733, 19.4443,
1.9165

■ 29.6322, -2.6705,
1.7452

■ 14.5756, 21.3866,
2.7398

■ 31.9444, -5.3444,
2.2375

■ 13.8482, 23.0276,
3.6324

■ 34.3293, -7.9660,
2.7881

■ 13.5382, 23.8013,
3.9674

■ 36.7790, -10.5417,
3.3881

■ 39.2870, -13.0780,
4.0300

■ 41.8480, -15.5809,
4.7082

Harmonies

Analogous

The Analogous color harmony consists of three colors that are next to each other on the color wheel.



21.3385, 6.8839, -4.1125



21.3380, 8.5912, 0.6355



21.3385, 7.5104, 4.6364

Triad

The Triadic color harmony groups three colors that are evenly spaced from another and form a triangle on the color wheel.



21.3385, 8.5903, 0.6359



21.3385, -5.0053, 7.4817



21.3385, -5.8739, -7.2685

Complementary

The Complementary color scheme is a pair of colors which are on the opposite of each other on the color wheel.



21.3380, 8.5912, 0.6355



26.5894, -9.6349, 2.9223

Split Complementary

Split-complementary colors differ from the complementary color scheme. The scheme consists of three colors, the original color and two neighbors of the complement color.



21.3385, -8.5994, -3.0183



21.3380, 8.5912, 0.6355



21.3385, -8.1290, 5.3594

Square

The Square scheme is like the rectangle color scheme, but the four colors are evenly spaced on the color wheel.



21.3385, 8.5903, 0.6359



21.3385, -0.5913, 8.0532



21.3385, -9.3884, 1.6741



21.3385, -1.6826, -9.2531

Rectangle

The Rectangle color scheme consists of four colors that form a rectangle on the color wheel.



21.3380, 8.5912, 0.6355



21.3385, 5.4021, 6.4795



21.3385, -9.3884, 1.6741



21.3385, -6.9775, -6.0181

Sweetspot

The Sweet Spot groups the original color and five complimentary colors.



21.3385, 8.5903, 0.6359



34.1714, 2.1008, 1.4643



20.9385, 8.5476, -8.9913



17.3026, 1.2013, 0.7302



67.9972, -3.6282, 3.6944



19.0543, -1.0167, 1.0353

Same Dimension

The Same Dimension uses a secret algorithm to generate beautiful new colors.



21.3385, 8.5903, 0.6359



25.8354, 14.4889, 0.8582



22.0451, 5.5056, 4.9422



13.8342, 0.4511, 0.6276



17.6174, 30.8951, 5.7667



42.1230, 73.5122, 16.5583

Inverse Universe

The Inverse Universe completely reimagines the original color for something new.



21.3385, 8.5903, 0.6359



25.8354, 14.4889, 0.8582



25.6577, -6.4221, -2.2910



13.8342, 0.4511, 0.6276



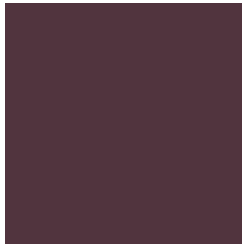
17.6174, 30.8951, 5.7667



42.1230, 73.5122, 16.5583

Previews

White Background



This preview shows how the HunterLab color 21.3380, 8.5912, 0.6355 looks on a white background.

Color Contrast Check

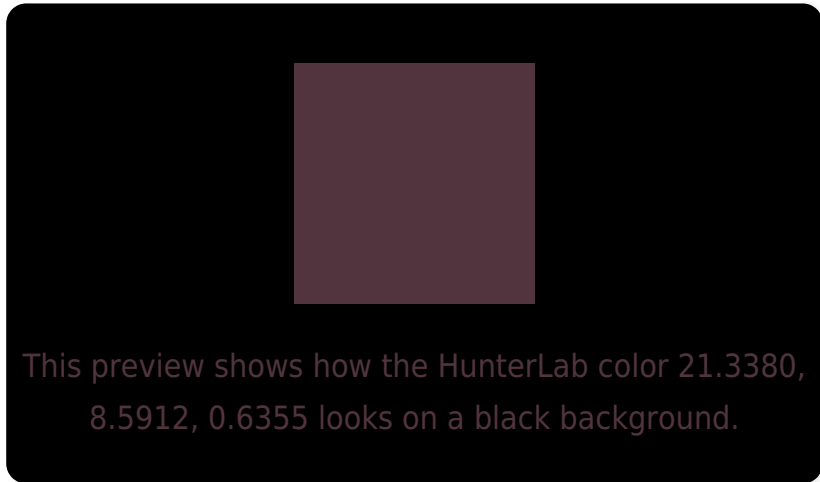
Large Text (above 18pt) WCAG AA ✓ Pass

Any Text WCAG AA ✓ Pass

Large Text (above 18pt) WCAG AAA ✓ Pass

Any Text WCAG AAA ✓ Pass

Black Background



Color Contrast Check

Large Text (above 18pt) WCAG AA × Fail

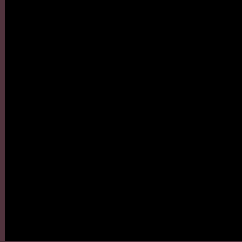
Any Text WCAG AA × Fail

Large Text (above 18pt) WCAG AAA × Fail

Any Text WCAG AAA × Fail

If you want to check with other color combinations, try the [Color Contrast Checker](#).

HunterLab 21.3380, 8.5912, 0.6355 Background



This preview shows how black text looks on a background with the HunterLab color 21.3380, 8.5912, 0.6355.



This preview shows how white text looks on a background with the HunterLab color 21.3380, 8.5912,

0.6355.

Color Blindness Simulation

Color vision deficiency is a very complex topic, and I could not describe the different causes any better than Wikipedia does, so if you want to learn more, you should check out their [article about color blindness](#).

Dichromacy



Original Color

21.3380, 8.5912, 0.6355

Protanopia

21.4421, -0.1250, -1.4730

Deuteranopia

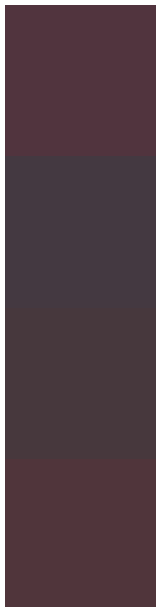
21.5014, 1.0011, 1.0926



Tritanopia

21.3239, 7.2154, 2.5032

Trichromacy



Original Color

21.3380, 8.5912, 0.6355

Protanomaly

21.2999, 2.9605, -0.7441

Deuteranomaly

21.2247, 3.6876, 0.8104

Tritanomaly

21.3716, 7.4577, 1.8207

Monochromacy



Original Color

21.3380, 8.5912, 0.6355

Achromatopsia

21.9481, -1.1711, 1.1925

Achromatomaly

21.5386, 2.3921, 0.7685

CSS Examples

Text

The CSS property to change the color of the text to HunterLab 21.3380, 8.5912, 0.6355 is called "color". The color property can be set on classes, ids or directly on the HTML element.

This example shows how text in the color `rgb(81, 52, 62)` looks like.

```
.text, #text, p{  
    color:rgb(81, 52, 62)  
}
```

If you want to add a text shadow in that color use the text-shadow property, you can generate a text shadow directly with our [CSS Text Shadow Generator](#).

Here you see how black text with a 4 pixel rgb(81, 52, 62) colored shadow looks like.

```
.shadow{ text-shadow: 4px 4px 2px rgb(81, 52, 62) }
```

Border

The CSS property to change the border of an element to HunterLab 21.3380, 8.5912, 0.6355 is called "border". The border property can be set on classes, ids or directly on the HTML element.

This example shows the color as border, it can be applied via the CSS property "border" or "border-color".

```
.border, #border, table{ border:4px solid rgb(81, 52, 62) }
```


If only the border color should be changed use the property `border-color`.

```
.border{ border-color:rgb(81, 52, 62) }
```

If you want to add a box shadow in that color use:

Here you see how a box with a 4 pixel `rgb(81, 52, 62)` colored shadow looks like.

```
.boxshadow{ -moz-box-shadow:4px 4px 4px  
4px rgb(81, 52, 62); -webkit-box-  
shadow:4px 4px 4px 4px rgb(81, 52, 62);  
box-shadow:4px 4px 4px 4px rgb(81, 52, 62)  
}
```

Background

The CSS property to change the background color of an element to HunterLab 21.3380, 8.5912, 0.6355 is called "background". The background property can be set on classes, ids or directly on the HTML element.

```
.background, #background, body{  
background: rgb(81, 52, 62) }
```

If only the background color should be changed can be used:

```
.background{ background-color: rgb(81, 52,  
62) }
```

This example shows the color as background, it is applied via the CSS property "background".

To optimize and compress your CSS code, you can use our [online CSS compressor and optimizer](#) based on csstidy. If you want to create a linear or radial gradient as background or border, check our [CSS Gradient Generator](#).

Hey! You found this booklet
interesting? Support Converting
Colors with the new Membership
Option!

The pro membership hides all ads, plus gives you
double the colors in the color bucket, and more
awesome pro features!

[Learn more, Memberships starting at \\$2.50/m!](#)

**Follow me
on Twitter!**

@ConvertingColor