

Converting Colors

HunterLab(21.6781, 1.7136,
7.2480)

Have a look what the booklet for
HunterLab(21.6781, 1.7136, 7.2480)
contains.

HunterLab(21.5786, 1.7211, 7.0471)	3
<i>Conversions</i>	4
<i>Details</i>	6
<i>Harmonies</i>	12
<i>Previews</i>	24
<i>Color Blindness Simulation</i>	28
<i>CSS Examples</i>	31

Color

**HunterLab(21.5786, 1.7211,
7.0471)**

Conversions

Conversions Part 1

Format	Color
Hex	4A3A2B
RGB	74, 58, 43
RGB Percent	29%, 23%, 17%
CMY	0.7098, 0.7725, 0.8314
CMYK	0.00, 0.22, 0.42, 0.71
HSL	29°, 26%, 23%
HSV	29°, 42%, 29%
XYZ	4.7731, 4.6564, 2.9327
YIQ	61.0740, 14.3510, -1.2730

Conversions

Conversions Part 2

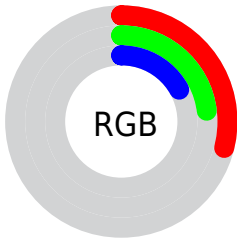
Format	Color
R_{YB}	74, 72, 43
Decimal	4864555
CIE Lab	25.73, 4.59, 12.00
CIE LCh	26, 12.848, 69.083
Yxy	4.6566, 0.3861, 0.3767
Android (android.graphics.Color)	4283054635 (0xFF4A3A2B)
YUV	61.0740, -8.9105, 11.3361
Hunter-Lab	21.5786, 1.7211, 7.0471

Details

The HunterLab color **21.5786, 1.7211, 7.0471** is a dark color, and the websafe version is hex **333333**. A complement of this color would be **20.3366, -2.2688, -6.3962**, and the grayscale version is **21.6544, -1.1554, 1.1765**.

A 20% lighter version of the original color is **38.8709, 1.6242, 9.5646**, and **7.9558, 2.5881, 4.9477** is the 20% darker color. If you saturate the color by 10%, you get **20.5820, 2.6969, 8.0134**, and if you desaturate by 10%, it is **22.6173, 0.8384, 5.9216**.

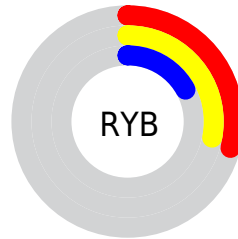
Distribution



Red (29%)

Green (23%)

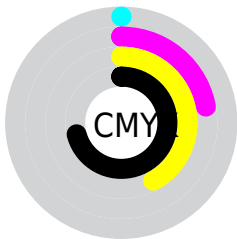
Blue (17%)



Red (29%)

Yellow (28%)

Blue (17%)

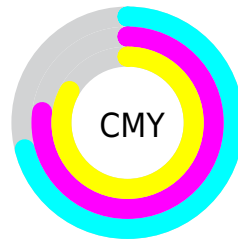


Cyan (0%)

Magenta (22%)

Yellow (42%)

Black (71%)



Cyan (71%)

Magenta (77%)

Yellow (83%)

Brightness & Saturation Gradients

These gradients show how the HunterLab color 21.5786, 1.7211, 7.0471 changes by changing the brightness by 10 percent. The first figure shows a shift by +10% for each color and the second figure -10%.

Similar to the brightness gradients but the following saturation gradients show a change of the HunterLab color 21.5786, 1.7211, 7.0471 by changing the saturation by 10% instead.

■ 21.5786, 1.7211,
7.0471

■ 21.5786, 1.7211,
7.0471

■ 121.0195, -1.4474,
18.3294

■ 14.3081, 1.7609,
5.6215

■ 38.8231, 1.3919,
9.6714

■ 7.9667, 2.0835,
5.5767

■ 48.6286, 1.1294,
10.9280

0.0000, NaN, NaN

■ 59.1439, 0.8119,
12.1675

0.0000, NaN, NaN

0.0000, NaN, NaN

■ 70.3237, 0.4447,
13.3985

0.0000, NaN, NaN

■ 82.1308, 0.0321,
14.6266

0.0000, NaN, NaN

0.0000, NaN, NaN

■ 94.5335, -0.4225,

107.5043, -0.9165,
17.0895

21.5786, 1.7211,
7.0471

21.5786, 1.7211,
7.0471

20.5820, 2.6969,
8.0134

22.6173, 0.8384,
5.9216

19.6294, 3.7711,
8.8051

23.6934, 0.0468,
4.6501

18.7246, 4.9438,
9.4087

24.8047, -0.6595,
3.2463

17.8714, 6.2125,
9.8124

25.9485, -1.2862,
1.7225

17.0703, 7.5556,
10.0525

27.1225, -1.8389,
0.0899

■ 16.4505, 8.6381,
10.2879

■ 28.3246, -2.3231,
-1.6415

■ 29.5528, -2.7439,
-3.4629

■ 30.8054, -3.1065,
-5.3663

■ 32.0809, -3.4153,
-7.3447

Harmonies

Analogous

The Analogous color harmony consists of three colors that are next to each other on the color wheel.



21.5791, 5.2808, 5.3696



21.5786, 1.7211, 7.0471



21.5791, -2.3771, 7.3207

Triad

The Triadic color harmony groups three colors that are evenly spaced from another and form a triangle on the color wheel.



21.5791, 1.7203, 7.0474



21.5791, -8.3656, -0.0370



21.5791, 4.0193, -5.4582

Complementary

The Complementary color scheme is a pair of colors which are on the opposite of each other on the color wheel.



21.5786, 1.7211, 7.0471



20.3366, -2.2688, -6.3962

Split Complementary

Split-complementary colors differ from the complementary color scheme. The scheme consists of three colors, the original color and two neighbors of the complement color.



21.5791, 0.0999, -7.5702



21.5786, 1.7211, 7.0471



21.5791, -6.9107, -4.0797

Square

The Square scheme is like the rectangle color scheme, but the four colors are evenly spaced on the color wheel.



21.5791, 1.7203, 7.0474



21.5791, -8.0024, 3.6727



21.5791, -3.8825, -7.0236



21.5791, 6.6751, -1.6632

Rectangle

The Rectangle color scheme consists of four colors that form a rectangle on the color wheel.



21.5786, 1.7211, 7.0471



21.5791, -4.8349, 6.7316



21.5791, -3.8825, -7.0236



21.5791, 2.7946, -6.4178

Sweetspot

The Sweet Spot groups the original color and five complimentary colors.



21.5791, 1.7203, 7.0474



32.4971, -0.7270, 4.5953



18.7071, 9.9886, -1.4190



16.2247, -0.3084, 2.4267



65.8695, -3.5146, 3.5788



17.3419, -0.9253, 0.9422

Same Dimension

The Same Dimension uses a secret algorithm to generate beautiful new colors.



21.5791, 1.7203, 7.0474



27.1558, 3.5682, 10.5837



25.4147, -4.6211, 10.2476



13.4660, -0.4643, 1.4838



22.4761, 13.0268, 14.0777



53.0310, 35.6544, 33.3017

Inverse Universe

The Inverse Universe completely reimagines the original color for something new.



20.3366, -2.2688, -6.3962



25.1505, -2.8086, -11.1545



16.6541, 4.2431, -12.7276



13.3227, -0.9304, -0.0619



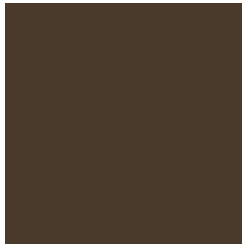
18.6352, 2.3980, -28.4691



43.2958, 9.7511, -75.1658

Previews

White Background



This preview shows how the HunterLab color 21.5786, 1.7211, 7.0471 looks on a white background.

Color Contrast Check

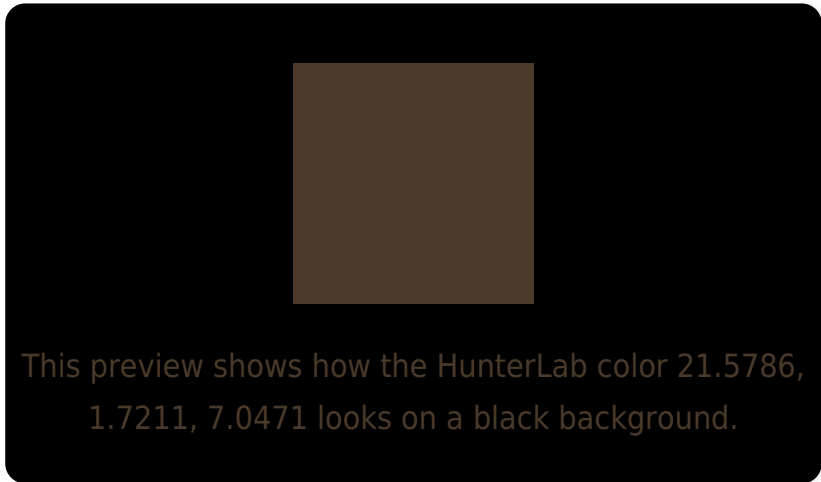
Large Text (above 18pt) WCAG AA ✓ Pass

Any Text WCAG AA ✓ Pass

Large Text (above 18pt) WCAG AAA ✓ Pass

Any Text WCAG AAA ✓ Pass

Black Background



Color Contrast Check

Large Text (above 18pt) WCAG AA × Fail

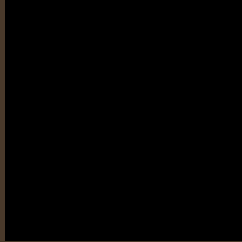
Any Text WCAG AA × Fail

Large Text (above 18pt) WCAG AAA × Fail

Any Text WCAG AAA × Fail

If you want to check with other color combinations, try the [Color Contrast Checker](#).

HunterLab 21.5786, 1.7211, 7.0471 Background



This preview shows how black text looks on a background with the HunterLab color 21.5786, 1.7211, 7.0471.

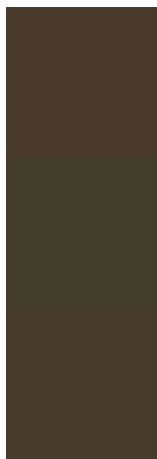


This preview shows how white text looks on a background with the HunterLab color 21.5786, 1.7211,

Color Blindness Simulation

Color vision deficiency is a very complex topic, and I could not describe the different causes any better than Wikipedia does, so if you want to learn more, you should check out their [article about color blindness](#).

Dichromacy



Original Color

21.5786, 1.7211, 7.0471

Protanopia

21.6277, -1.7805, 6.7634

Deuteranopia

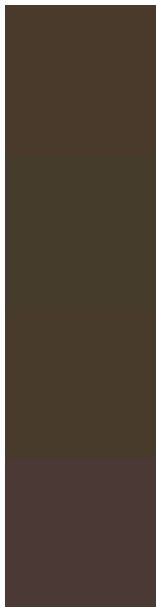
21.7228, 0.9974, 7.1650



Tritanopia

21.6589, 5.0369, 1.7319

Trichromacy



Original Color

21.5786, 1.7211, 7.0471

Protanomaly

21.6305, -0.5142, 6.7880

Deuteranomaly

21.7228, 0.9974, 7.1650

Tritanomaly

21.6528, 3.5787, 3.8486

Monochromacy



Original Color

21.5786, 1.7211, 7.0471

Achromatopsia

21.6021, -1.1526, 1.1737

Achromatomaly

21.5785, -0.3022, 3.7019

CSS Examples

Text

The CSS property to change the color of the text to HunterLab 21.5786, 1.7211, 7.0471 is called "color". The color property can be set on classes, ids or directly on the HTML element.

This example shows how text in the color `rgb(74, 58, 43)` looks like.

```
.text, #text, p{  
    color:rgb(74, 58, 43)  
}
```

If you want to add a text shadow in that color use the text-shadow property, you can generate a text shadow directly with our [CSS Text Shadow Generator](#).

Here you see how black text with a 4 pixel rgb(74, 58, 43) colored shadow looks like.

```
.shadow{ text-shadow: 4px 4px 2px rgb(74, 58, 43) }
```

Border

The CSS property to change the border of an element to HunterLab 21.5786, 1.7211, 7.0471 is called "border". The border property can be set on classes, ids or directly on the HTML element.

This example shows the color as border, it can be applied via the CSS property "border" or "border-color".

```
.border, #border, table{ border:4px solid rgb(74, 58, 43) }
```


If only the border color should be changed use the property `border-color`.

```
.border{ border-color:rgb(74, 58, 43) }
```

If you want to add a box shadow in that color use:

Here you see how a box with a 4 pixel `rgb(74, 58, 43)` colored shadow looks like.

```
.boxshadow{ -moz-box-shadow:4px 4px 4px  
4px rgb(74, 58, 43); -webkit-box-  
shadow:4px 4px 4px 4px rgb(74, 58, 43);  
box-shadow:4px 4px 4px 4px rgb(74, 58, 43)  
}
```

Background

The CSS property to change the background color of an element to HunterLab 21.5786, 1.7211, 7.0471 is called "background". The background property can be set on classes, ids or directly on the HTML element.

```
.background, #background, body{  
background: rgb(74, 58, 43) }
```

If only the background color should be changed can be used:

```
.background{ background-color: rgb(74, 58,  
43) }
```

This example shows the color as background, it is applied via the CSS property "background".

To optimize and compress your CSS code, you can use our [online CSS compressor and optimizer](#) based on csstidy. If you want to create a linear or radial gradient as background or border, check our [CSS Gradient Generator](#).

Hey! You found this booklet interesting? Support Converting Colors with the new Membership Option!

The pro membership hides all ads, plus gives you double the colors in the color bucket, and more awesome pro features!

[Learn more, Memberships starting at \\$2.50/m!](#)

**Follow me
on Twitter!**

@ConvertingColor