

Converting Colors

HunterLab(21.7121, 0.6611,
5.0410)

Have a look what the booklet for
HunterLab(21.7121, 0.6611, 5.0410)
contains.

HunterLab(21.5878, 0.7983, 5.0285)	3
<i>Conversions</i>	4
<i>Details</i>	6
<i>Harmonies</i>	12
<i>Previews</i>	24
<i>Color Blindness Simulation</i>	28
<i>CSS Examples</i>	31

Color

**HunterLab(21.5878, 0.7983,
5.0285)**

Conversions

Conversions Part 1

Format	Color
Hex	463B32
RGB	70, 59, 50
RGB Percent	27%, 23%, 20%
CMY	0.7255, 0.7686, 0.8039
CMYK	0.00, 0.16, 0.29, 0.73
HSL	27°, 17%, 24%
HSV	27°, 29%, 27%
XYZ	4.6655, 4.6603, 3.6713
YIQ	61.2630, 9.4450, -0.4670

Conversions

Conversions Part 2

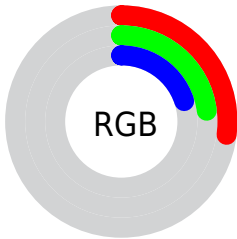
Format	Color
R_{YB}	70, 66, 50
Decimal	4602674
CIE Lab	25.74, 3.14, 7.36
CIE LCh	26, 8.003, 66.904
Yxy	4.6605, 0.3590, 0.3586
Android (android.graphics.Color)	4282792754 (0xFF463B32)
YUV	61.2630, -5.5527, 7.6623
Hunter-Lab	21.5878, 0.7983, 5.0285

Details

The HunterLab color **21.5878, 0.7983, 5.0285** is a dark color, and the websafe version is hex **333333**. A complement of this color would be **21.1133, -2.3730, -3.3034**, and the grayscale version is **21.7097, -1.1584, 1.1795**.

A 20% lighter version of the original color is **38.8259, 0.4328, 7.0329**, and **8.0892, 1.1972, 4.3740** is the 20% darker color. If you saturate the color by 10%, you get **20.5510, 1.6911, 6.0991**, and if you desaturate by 10%, it is **22.6630, -0.0139, 3.8375**.

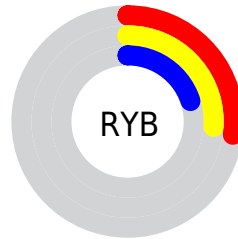
Distribution



Red (27%)

Green (23%)

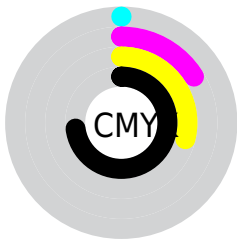
Blue (20%)



Red (27%)

Yellow (26%)

Blue (20%)

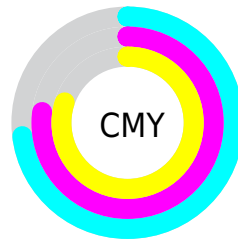


Cyan (0%)

Magenta (16%)

Yellow (29%)

Black (73%)



Cyan (73%)

Magenta (77%)

Yellow (80%)

Brightness & Saturation Gradients

These gradients show how the HunterLab color 21.5878, 0.7983, 5.0285 changes by changing the brightness by 10 percent. The first figure shows a shift by +10% for each color and the second figure -10%.

Similar to the brightness gradients but the following saturation gradients show a change of the HunterLab color 21.5878, 0.7983, 5.0285 by changing the saturation by 10% instead.

■ 21.5878, 0.7983,
5.0285

■ 21.5878, 0.7983,
5.0285

■ 121.0358, -3.0403,
13.9413

■ 14.3161, 0.9457,
4.0292

■ 38.8342, 0.2848,
6.9631

■ 7.9749, 1.2893,
4.2602

■ 48.6407, -0.0592,
7.9266

0.0000, NaN, NaN

■ 59.1567, -0.4531,
8.8968

0.0000, NaN, NaN

■ 70.3373, -0.8923,
9.8775

0.0000, NaN, NaN

■ 82.1452, -1.3732,
10.8710

0.0000, NaN, NaN

■ 94.5485, -1.8930,

0.0000, NaN, NaN

11.8788

0.0000, NaN, NaN

107.5200, -2.4494,
12.9021

■ 21.5878, 0.7983,
5.0285

■ 21.5878, 0.7983,
5.0285

■ 20.5510, 1.6911,
6.0991

■ 22.6630, -0.0139,
3.8375

■ 19.5543, 2.6713,
7.0352

■ 23.7721, -0.7483,
2.5373

■ 18.6019, 3.7412,
7.8229

■ 24.9130, -1.4110,
1.1392

■ 17.6976, 4.9019,
8.4479

■ 26.0832, -2.0076,
-0.3472

■ 16.8455, 6.1515,
8.8971

■ 27.2805, -2.5431,
-1.9132

■ 16.0489, 7.4797,
9.1714

■ 28.5032, -3.0227,
-3.5514

■ 15.2981, 8.8079,
9.4695

■ 29.7495, -3.4508,
-5.2552

■ 15.1944, 8.9950,
9.5202

■ 31.0177, -3.8317,
-7.0190

■ 32.3066, -4.1695,
-8.8377

Harmonies

Analogous

The Analogous color harmony consists of three colors that are next to each other on the color wheel.



21.5883, 2.8953, 3.7843



21.5878, 0.7983, 5.0285



21.5883, -1.7373, 5.2995

Triad

The Triadic color harmony groups three colors that are evenly spaced from another and form a triangle on the color wheel.



21.5883, 0.7976, 5.0288



21.5883, -5.7934, 0.6088



21.5883, 1.8604, -2.8825

Complementary

The Complementary color scheme is a pair of colors which are on the opposite of each other on the color wheel.



21.5878, 0.7983, 5.0285



21.1133, -2.3730, -3.3034

Split Complementary

Split-complementary colors differ from the complementary color scheme. The scheme consists of three colors, the original color and two neighbors of the complement color.



21.5883, -0.5625, -3.9681



21.5878, 0.7983, 5.0285



21.5883, -4.9235, -1.8069

Square

The Square scheme is like the rectangle color scheme, but the four colors are evenly spaced on the color wheel.



21.5883, 0.7976, 5.0288



21.5883, -5.4668, 2.9203



21.5883, -3.0368, -3.5533



21.5883, 3.5285, -0.7292

Rectangle

The Rectangle color scheme consists of four colors that form a rectangle on the color wheel.



21.5878, 0.7983, 5.0285



21.5883, -3.3201, 4.9232



21.5883, -3.0368, -3.5533



21.5883, 1.1030, -3.3951

Sweetspot

The Sweet Spot groups the original color and five complimentary colors.



21.5883, 0.7976, 5.0288



31.2345, -0.9129, 3.4887



19.7997, 5.9982, -0.9150



15.7300, -0.4264, 1.8294



64.8100, -3.4581, 3.5212



16.4960, -0.8802, 0.8963

Same Dimension

The Same Dimension uses a secret algorithm to generate beautiful new colors.



21.5883, 0.7976, 5.0288



27.5326, 1.8450, 7.6153



24.0597, -3.3051, 7.3312



12.6639, -0.3970, 1.3554



21.2993, 14.0501, 13.3705



50.8470, 38.9012, 32.0127

Inverse Universe

The Inverse Universe completely reimagines the original color for something new.



21.1133, -2.3730, -3.3034



26.7617, -3.2845, -5.8978



18.6763, 1.7695, -6.8558



12.5861, -0.9185, -0.0104



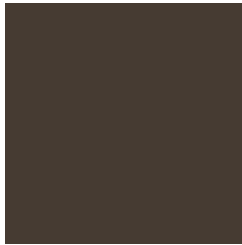
19.0065, 0.7849, -25.4507



44.9011, 5.5710, -68.1486

Previews

White Background



This preview shows how the HunterLab color 21.5878, 0.7983, 5.0285 looks on a white background.

Color Contrast Check

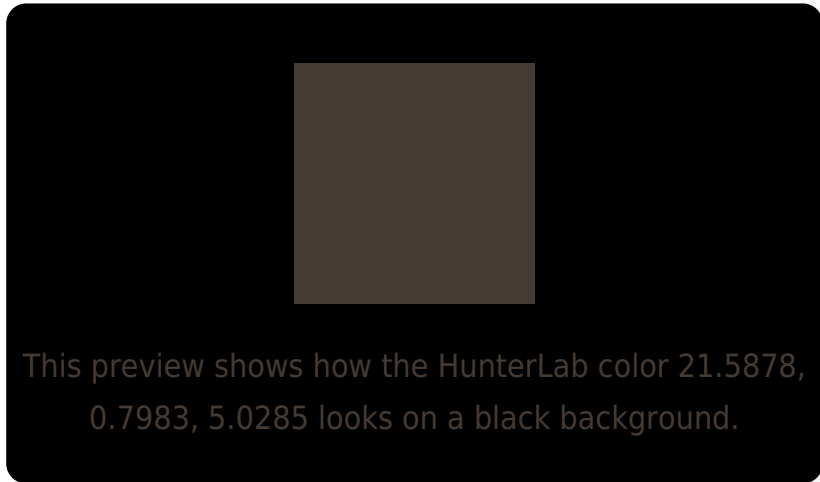
Large Text (above 18pt) WCAG AA ✓ Pass

Any Text WCAG AA ✓ Pass

Large Text (above 18pt) WCAG AAA ✓ Pass

Any Text WCAG AAA ✓ Pass

Black Background



Color Contrast Check

Large Text (above 18pt) WCAG AA × Fail

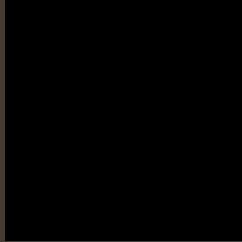
Any Text WCAG AA × Fail

Large Text (above 18pt) WCAG AAA × Fail

Any Text WCAG AAA × Fail

If you want to check with other color combinations, try the [Color Contrast Checker](#).

HunterLab 21.5878, 0.7983, 5.0285 Background



This preview shows how black text looks on a background with the HunterLab color 21.5878, 0.7983, 5.0285.



This preview shows how white text looks on a background with the HunterLab color 21.5878, 0.7983,

Color Blindness Simulation

Color vision deficiency is a very complex topic, and I could not describe the different causes any better than Wikipedia does, so if you want to learn more, you should check out their [article about color blindness](#).

Dichromacy



Original Color

21.5878, 0.7983, 5.0285

Protanopia

21.6021, -1.6060, 4.6868

Deuteranopia

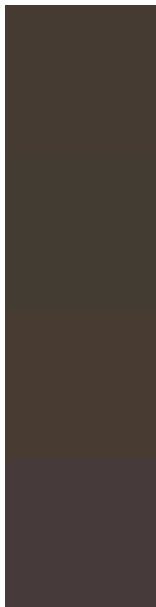
21.6744, 1.0914, 5.1202



Tritanopia

21.4794, 3.3904, 0.7149

Trichromacy



Original Color

21.5878, 0.7983, 5.0285

Protanomaly

21.5151, -0.6476, 4.6153

Deuteranomaly

21.6744, 1.0914, 5.1202

Tritanomaly

21.6129, 2.4422, 2.3793

Monochromacy



Original Color

21.5878, 0.7983, 5.0285

Achromatopsia

21.6021, -1.1526, 1.1737

Achromatomaly

21.4875, -0.4806, 2.5512

CSS Examples

Text

The CSS property to change the color of the text to HunterLab 21.5878, 0.7983, 5.0285 is called "color". The color property can be set on classes, ids or directly on the HTML element.

This example shows how text in the color `rgb(70, 59, 50)` looks like.

```
.text, #text, p{  
    color:rgb(70, 59, 50)  
}
```

If you want to add a text shadow in that color use the text-shadow property, you can generate a text shadow directly with our [CSS Text Shadow Generator](#).

Here you see how black text with a 4 pixel rgb(70, 59, 50) colored shadow looks like.

```
.shadow{ text-shadow: 4px 4px 2px rgb(70, 59, 50) }
```

Border

The CSS property to change the border of an element to HunterLab 21.5878, 0.7983, 5.0285 is called "border". The border property can be set on classes, ids or directly on the HTML element.

This example shows the color as border, it can be applied via the CSS property "border" or "border-color".

```
.border, #border, table{ border:4px solid rgb(70, 59, 50) }
```


If only the border color should be changed use the property border-color.

```
.border{ border-color:rgb(70, 59, 50) }
```

If you want to add a box shadow in that color use:

Here you see how a box with a 4 pixel rgb(70, 59, 50) colored shadow looks like.

```
.boxshadow{ -moz-box-shadow:4px 4px 4px  
4px rgb(70, 59, 50); -webkit-box-  
shadow:4px 4px 4px 4px rgb(70, 59, 50);  
box-shadow:4px 4px 4px 4px rgb(70, 59, 50)  
}
```

Background

The CSS property to change the background color of an element to HunterLab 21.5878, 0.7983, 5.0285 is called "background". The background property can be set on classes, ids or directly on the HTML element.

```
.background, #background, body{  
background: rgb(70, 59, 50) }
```

If only the background color should be changed can be used:

```
.background{ background-color: rgb(70, 59,  
50) }
```

This example shows the color as background, it is applied via the CSS property "background".

To optimize and compress your CSS code, you can use our [online CSS compressor and optimizer](#) based on csstidy. If you want to create a linear or radial gradient as background or border, check our [CSS Gradient Generator](#).

Hey! You found this booklet interesting? Support Converting Colors with the new Membership Option!

The pro membership hides all ads, plus gives you double the colors in the color bucket, and more awesome pro features!

[Learn more, Memberships starting at \\$2.50/m!](#)

**Follow me
on Twitter!**

@ConvertingColor