

# Converting Colors

HunterLab(21.8932, 7.9636,  
2.4244)

Have a look what the booklet for  
HunterLab(21.8932, 7.9636, 2.4244)  
contains.

<b>HunterLab(21.8932, 7.9636, 2.4244)</b> .....	3
<i><b>Conversions</b></i> .....	4
<i><b>Details</b></i> .....	6
<i><b>Harmonies</b></i> .....	12
<i><b>Previews</b></i> .....	24
<i><b>Color Blindness Simulation</b></i> .....	28
<i><b>CSS Examples</b></i> .....	31

# Color

**HunterLab(21.8932, 7.9636,  
2.4244)**

# Conversions

## Conversions Part 1

<b>Format</b>	<b>Color</b>
Hex	53363B
RGB	83, 54, 59
RGB Percent	33%, 21%, 23%
CMY	0.6745, 0.7882, 0.7686
CMYK	0.00, 0.35, 0.29, 0.67
HSL	350°, 21%, 27%
HSV	350°, 35%, 33%
XYZ	5.6759, 4.7931, 4.7637
YIQ	63.2410, 15.6790, 7.7030

# Conversions

## Conversions Part 2

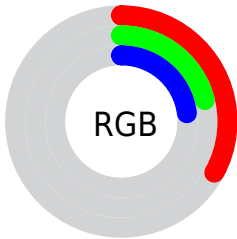
<b>Format</b>	<b>Color</b>
<b>R<sub>Y</sub>B</b>	83, 54, 59
Decimal	5453371
CIE Lab	26.14, 13.81, 2.18
CIE LCh	26, 13.979, 8.961
Yxy	4.7933, 0.3726, 0.3147
Android (android.graphics.Color)	4283643451 (0xFF53363B)
YUV	63.2410, -2.0908, 17.3286
Hunter-Lab	21.8932, 7.9636, 2.4244

# Details

The HunterLab color **21.8932, 7.9636, 2.4244** is a dark color, and the websafe version is hex **663333**. A complement of this color would be **27.4244, -9.0053, 1.1576**, and the grayscale version is **22.3824, -1.1943, 1.2161**.

A 20% lighter version of the original color is **39.1593, 8.6345, 3.6356**, and **8.1858, 6.9609, 1.6153** is the 20% darker color. If you saturate the color by 10%, you get **20.0473, 10.8214, 2.8882**, and if you desaturate by 10%, it is **23.8937, 5.1460, 2.0732**.

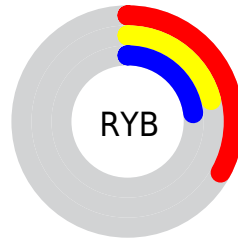
# Distribution



 Red (33%)

 Green (21%)

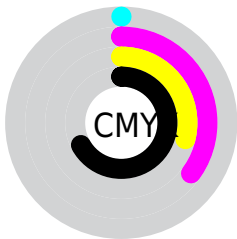
 Blue (23%)



 Red (33%)

 Yellow (21%)

 Blue (23%)

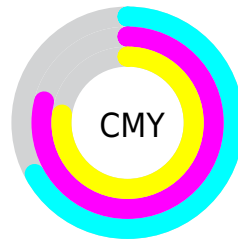


 Cyan (0%)

 Magenta (35%)

 Yellow (29%)

 Black (67%)



 Cyan (67%)

 Magenta (79%)

 Yellow (77%)

# Brightness & Saturation Gradients

These gradients show how the HunterLab color 21.8932, 7.9636, 2.4244 changes by changing the brightness by 10 percent. The first figure shows a shift by +10% for each color and the second figure -10%.

Similar to the brightness gradients but the following saturation gradients show a change of the HunterLab color 21.8932, 7.9636, 2.4244 by changing the saturation by 10% instead.



■ 21.8932, 7.9636,  
2.4244

■ 21.8932, 7.9636,  
2.4244

■ 121.5775, 8.8750,  
8.8467

■ 14.5826, 7.3816,  
1.8605

■ 39.2054, 8.7330,  
3.6461

■ 8.2431, 7.0329,  
1.5436

■ 49.0407, 8.9647,  
4.3032

0.0000, NaN, NaN

0.0000, NaN, NaN

■ 59.5836, 9.1127,  
4.9904

0.0000, NaN, NaN

■ 70.7896, 9.1868,  
5.7067

0.0000, NaN, NaN

■ 82.6213, 9.1946,  
6.4514

0.0000, NaN, NaN

0.0000, NaN, NaN

■ 95.0475, 9.1420,

108.0408, 9.0341,  
8.0222

■ 21.8932, 7.9636,  
2.4244

■ 21.8932, 7.9636,  
2.4244

■ 20.0473, 10.8214,  
2.8882

■ 23.8937, 5.1460,  
2.0732

■ 18.3816, 13.6690,  
3.4727

■ 26.0244, 2.3967,  
1.8205

■ 16.9271, 16.4118,  
4.1779

■ 28.2672, -0.2770,  
1.6531

■ 15.7157, 18.9082,  
4.9869

■ 30.6070, -2.8764,  
1.5584

■ 14.7750, 20.9790,  
5.8590

■ 33.0314, -5.4076,  
1.5255

■ 14.0471, 22.6929,  
6.6765

■ 35.5306, -7.8783,  
1.5450

■ 13.6805, 23.6661,  
6.9960

■ 38.0964, -10.2968,  
1.6092

■ 40.7221, -12.6710,  
1.7118

■ 43.4022, -15.0081,  
1.8473

# Harmonies

## Analogous

The Analogous color harmony consists of three colors that are next to each other on the color wheel.



21.8937, 7.4240, -1.9441



21.8932, 7.9636, 2.4244



21.8937, 5.9064, 5.7261

# Triad

The Triadic color harmony groups three colors that are evenly spaced from another and form a triangle on the color wheel.



21.8937, 7.9627, 2.4248



21.8937, -6.3053, 6.6338



21.8937, -4.1640, -7.8721

# Complementary

The Complementary color scheme is a pair of colors which are on the opposite of each other on the color wheel.



21.8932, 7.9636, 2.4244



27.4244, -9.0053, 1.1576

# Split Complementary

Split-complementary colors differ from the complementary color scheme. The scheme consists of three colors, the original color and two neighbors of the complement color.



21.8937, -7.4470, -4.5839



21.8932, 7.9636, 2.4244



21.8937, -8.6128, 3.9230

# Square

The Square scheme is like the rectangle color scheme, but the four colors are evenly spaced on the color wheel.



21.8937, 7.9627, 2.4248



21.8937, -2.4893, 7.8160



21.8937, -9.0133, -0.1175



21.8937, 0.1826, -8.4958



# Rectangle

The Rectangle color scheme consists of four colors that form a rectangle on the color wheel.



21.8932, 7.9636, 2.4244



21.8937, 3.4306, 7.0929



21.8937, -9.0133, -0.1175



21.8937, -5.4183, -7.0143

# Sweetspot

The Sweet Spot groups the original color and five complimentary colors.



21.8937, 7.9627, 2.4248



35.2922, 1.5101, 2.2625



22.0669, 9.8902, -8.2174



17.4073, 0.8851, 1.1319



67.9972, -3.6282, 3.6944



19.0543, -1.0167, 1.0353



# Same Dimension

The Same Dimension uses a secret algorithm to generate beautiful new colors.



21.8937, 7.9627, 2.4248



26.5154, 13.5521, 3.6670



23.8347, 3.3810, 6.0636



13.8179, 0.3630, 0.8604



17.3776, 30.0114, 9.2779



41.6141, 71.6336, 24.0367



# Inverse Universe

The Inverse Universe completely reimagines the original color for something new.



21.8937, 7.9627, 2.4248



26.5154, 13.5521, 3.6670



25.0641, -4.5545, -3.9940



13.8179, 0.3630, 0.8604



17.3776, 30.0114, 9.2779

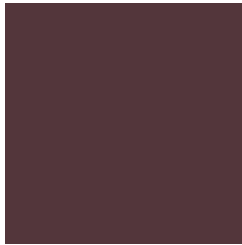


41.6141, 71.6336, 24.0367



# Previews

## White Background



This preview shows how the HunterLab color 21.8932, 7.9636, 2.4244 looks on a white background.

## Color Contrast Check

Large Text (above 18pt) WCAG AA ✓ Pass

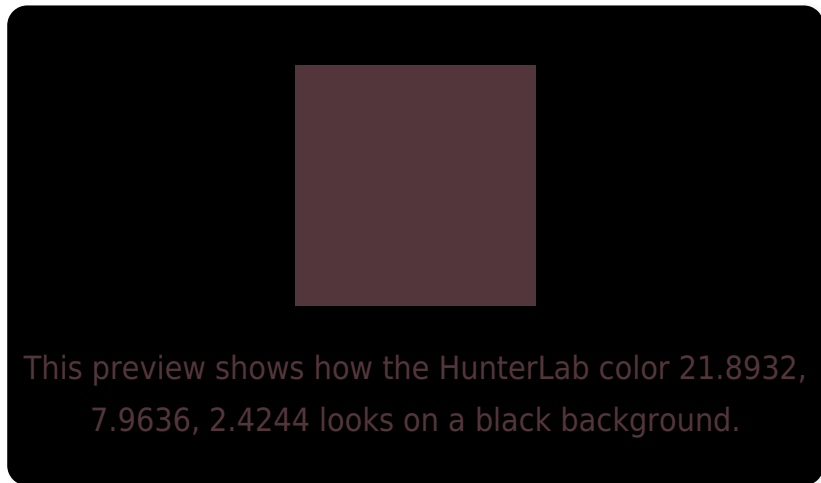
Any Text WCAG AA ✓ Pass

Large Text (above 18pt) WCAG AAA ✓ Pass

Any Text WCAG AAA ✓ Pass



# Black Background



## Color Contrast Check

Large Text (above 18pt) WCAG AA × Fail

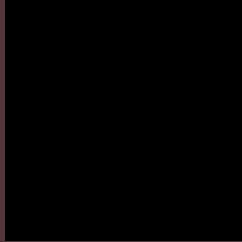
Any Text WCAG AA × Fail

Large Text (above 18pt) WCAG AAA × Fail

Any Text WCAG AAA × Fail

If you want to check with other color combinations, try the [Color Contrast Checker](#).

# HunterLab 21.8932, 7.9636, 2.4244 Background



This preview shows how black text looks on a background with the HunterLab color 21.8932, 7.9636, 2.4244.



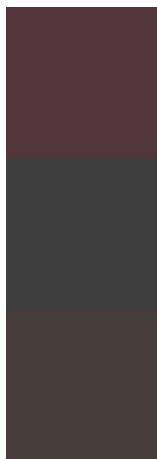
This preview shows how white text looks on a background with the HunterLab color 21.8932, 7.9636,

2.4244.

# Color Blindness Simulation

Color vision deficiency is a very complex topic, and I could not describe the different causes any better than Wikipedia does, so if you want to learn more, you should check out their [article about color blindness](#).

## Dichromacy



### Original Color

21.8932, 7.9636, 2.4244

### Protanopia

22.0474, -0.7760, 0.9256

### Deuteranopia

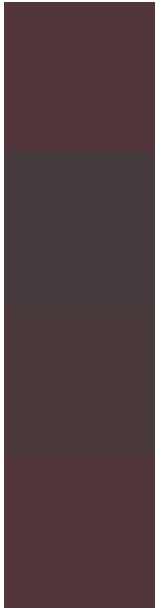
21.9984, 1.3061, 2.7893



## Tritanopia

21.8697, 7.8447, 2.7610

# Trichromacy



## Original Color

21.8932, 7.9636, 2.4244

## Protanomaly

21.8582, 2.2467, 1.1463

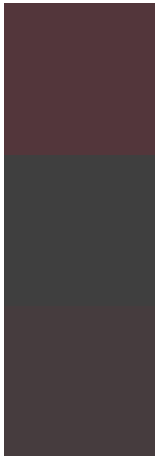
## Deuteranomaly

21.9715, 3.6204, 2.8000

## Tritanomaly

21.8697, 7.8447, 2.7610

# Monochromacy



## Original Color

21.8932, 7.9636, 2.4244

## Achromatopsia

22.2950, -1.1896, 1.2113

## Achromatomaly

22.0944, 1.8198, 1.4165

# CSS Examples

## Text

The CSS property to change the color of the text to HunterLab 21.8932, 7.9636, 2.4244 is called "color". The color property can be set on classes, ids or directly on the HTML element.

This example shows how text in the color `rgb(83, 54, 59)` looks like.

```
.text, #text, p{  
    color:rgb(83, 54, 59)  
}
```

If you want to add a text shadow in that color use the text-shadow property, you can generate a text shadow directly with our [CSS Text Shadow Generator](#).

Here you see how black text with a 4 pixel rgb(83, 54, 59) colored shadow looks like.

```
.shadow{ text-shadow: 4px 4px 2px rgb(83, 54, 59) }
```

## Border

The CSS property to change the border of an element to HunterLab 21.8932, 7.9636, 2.4244 is called "border".

The border property can be set on classes, ids or directly on the HTML element.

This example shows the color as border, it can be applied via the CSS property "border" or "border-color".

```
.border, #border, table{ border:4px solid rgb(83, 54, 59) }
```



If only the border color should be changed use the property `border-color`.

```
.border{ border-color:rgb(83, 54, 59) }
```

If you want to add a box shadow in that color use:

Here you see how a box with a 4 pixel `rgb(83, 54, 59)` colored shadow looks like.

```
.boxshadow{ -moz-box-shadow:4px 4px 4px  
4px rgb(83, 54, 59); -webkit-box-  
shadow:4px 4px 4px 4px rgb(83, 54, 59);  
box-shadow:4px 4px 4px 4px rgb(83, 54, 59)  
}
```

# Background

The CSS property to change the background color of an element to HunterLab 21.8932, 7.9636, 2.4244 is called "background". The background property can be set on classes, ids or directly on the HTML element.

```
.background, #background, body{  
background: rgb(83, 54, 59) }
```

If only the background color should be changed can be used:

```
.background{ background-color: rgb(83, 54,  
59) }
```

This example shows the color as background, it is applied via the CSS property "background".

To optimize and compress your CSS code, you can use our [online CSS compressor and optimizer](#) based on csstidy. If you want to create a linear or radial gradient as background or border, check our [CSS Gradient Generator](#).

Hey! You found this booklet interesting? Support Converting Colors with the new Membership Option!

The pro membership hides all ads, plus gives you double the colors in the color bucket, and more awesome pro features!

**[Learn more, Memberships starting at \\$2.50/m!](#)**

**Follow me  
on Twitter!**

@ConvertingColor