

# Converting Colors

HunterLab(21.9321, 0.7777,  
5.0613)

Have a look what the booklet for  
HunterLab(21.9321, 0.7777, 5.0613)  
contains.

<b>HunterLab(21.9325, 0.7807, 5.0617)</b> .....	3
<i><b>Conversions</b></i> .....	4
<i><b>Details</b></i> .....	6
<i><b>Harmonies</b></i> .....	12
<i><b>Previews</b></i> .....	24
<i><b>Color Blindness Simulation</b></i> .....	28
<i><b>CSS Examples</b></i> .....	31

# Color

**HunterLab(21.9325, 0.7807,  
5.0617)**

# Conversions

## Conversions Part 1

Format	Color
Hex	473C33
RGB	71, 60, 51
RGB Percent	28%, 24%, 20%
CMY	0.7216, 0.7647, 0.8000
CMYK	0.00, 0.15, 0.28, 0.72
HSL	27°, 16%, 24%
HSV	27°, 28%, 28%
XYZ	4.8120, 4.8103, 3.8069
YIQ	62.2630, 9.4450, -0.4670

# Conversions

## Conversions Part 2

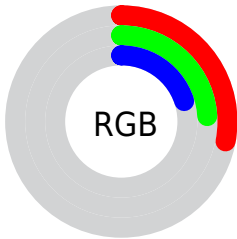
<b>Format</b>	<b>Color</b>
<b>R<sub>YB</sub></b>	71, 67, 51
Decimal	4668467
CIE Lab	26.19, 3.12, 7.34
CIE LCh	26, 7.977, 66.938
Yxy	4.8106, 0.3583, 0.3582
Android (android.graphics.Color)	4282858547 (0xFF473C33)
YUV	62.2630, -5.5527, 7.6623
Hunter-Lab	21.9325, 0.7807, 5.0617

# Details

The HunterLab color **21.9325, 0.7807, 5.0617** is a dark color, and the websafe version is hex **333333**. A complement of this color would be **21.4567, -2.3995, -3.2930**, and the grayscale version is **22.0560, -1.1769, 1.1983**.

A 20% lighter version of the original color is **39.2065, 0.4142, 7.0637**, and **8.3093, 0.9813, 4.1128** is the 20% darker color. If you saturate the color by 10%, you get **20.8771, 1.6857, 6.1544**, and if you desaturate by 10%, it is **23.0269, -0.0422, 3.8467**.

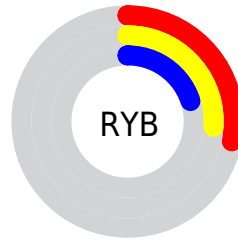
# Distribution



Red (28%)

Green (24%)

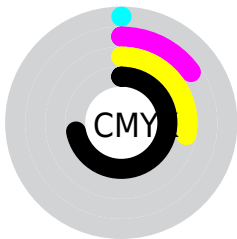
Blue (20%)



Red (28%)

Yellow (26%)

Blue (20%)

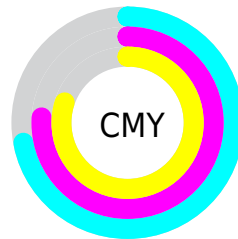


Cyan (0%)

Magenta (15%)

Yellow (28%)

Black (72%)



Cyan (72%)

Magenta (76%)

Yellow (80%)

# Brightness & Saturation Gradients

These gradients show how the HunterLab color 21.9325, 0.7807, 5.0617 changes by changing the brightness by 10 percent. The first figure shows a shift by +10% for each color and the second figure -10%.

Similar to the brightness gradients but the following saturation gradients show a change of the HunterLab color 21.9325, 0.7807, 5.0617 by changing the saturation by 10% instead.



■ 21.9325, 0.7807,  
5.0617

■ 21.9325, 0.7807,  
5.0617

■ 121.6470, -3.0831,  
13.9667

■ 14.6169, 0.9329,  
4.0661

■ 39.2531, 0.2597,  
6.9923

■ 8.2768, 1.2030,  
4.1262

■ 49.0921, -0.0875,  
7.9547

0.0000, NaN, NaN

0.0000, NaN, NaN

■ 59.6385, -0.4842,  
8.9241

0.0000, NaN, NaN

■ 70.8476, -0.9260,  
9.9042

0.0000, NaN, NaN

■ 82.6825, -1.4094,  
10.8972

0.0000, NaN, NaN

0.0000, NaN, NaN

■ 95.1115, -1.9316,

11.9047

0.0000, NaN, NaN

108.1076, -2.4901,  
12.9276

■ 21.9325, 0.7807,  
5.0617

■ 21.9325, 0.7807,  
5.0617

■ 20.8771, 1.6857,  
6.1544

■ 23.0269, -0.0422,  
3.8467

■ 19.8625, 2.6794,  
7.1104

■ 24.1558, -0.7860,  
2.5210

■ 18.8929, 3.7646,  
7.9156

■ 25.3169, -1.4571,  
1.0958

■ 17.9722, 4.9424,  
8.5555

■ 26.5078, -2.0609,  
-0.4189

■ 17.1046, 6.2108,  
9.0163

■ 27.7263, -2.6028,  
-2.0144

■ 16.2938, 7.5610,  
9.2948

■ 28.9706, -3.0877,  
-3.6833

■ 15.5306, 8.9160,  
9.5834

■ 30.2387, -3.5205,  
-5.4186

■ 15.3956, 9.1606,  
9.6471

■ 31.5293, -3.9055,  
-7.2148

■ 32.8408, -4.2466,  
-9.0667

# Harmonies

## Analogous

The Analogous color harmony consists of three colors that are next to each other on the color wheel.



21.9330, 2.8815, 3.8129



21.9325, 0.7807, 5.0617



21.9330, -1.7599, 5.3330

# Triad

The Triadic color harmony groups three colors that are evenly spaced from another and form a triangle on the color wheel.



21.9330, 0.7800, 5.0620



21.9330, -5.8240, 0.6237



21.9330, 1.8496, -2.8654

# Complementary

The Complementary color scheme is a pair of colors which are on the opposite of each other on the color wheel.



21.9325, 0.7807, 5.0617



21.4567, -2.3995, -3.2930

# Split Complementary

Split-complementary colors differ from the complementary color scheme. The scheme consists of three colors, the original color and two neighbors of the complement color.



21.9330, -0.5768, -3.9521



21.9325, 0.7807, 5.0617



21.9330, -4.9499, -1.7941

# Square

The Square scheme is like the rectangle color scheme, but the four colors are evenly spaced on the color wheel.



21.9330, 0.7800, 5.0620



21.9330, -5.4977, 2.9414



21.9330, -3.0570, -3.5392



21.9330, 3.5184, -0.7104



# Rectangle

The Rectangle color scheme consists of four colors that form a rectangle on the color wheel.



21.9325, 0.7807, 5.0617



21.9330, -3.3461, 4.9540



21.9330, -3.0570, -3.5392



21.9330, 1.0914, -3.3783

# Sweetspot

The Sweet Spot groups the original color and five complimentary colors.



21.9330, 0.7800, 5.0620



31.3889, -1.0090, 3.3035



20.1373, 5.9949, -0.9051



15.7987, -0.4697, 1.7473



64.8100, -3.4581, 3.5212



16.4960, -0.8802, 0.8963



# Same Dimension

The Same Dimension uses a secret algorithm to generate beautiful new colors.



21.9330, 0.7800, 5.0620



27.5326, 1.8450, 7.6154



24.4110, -3.3333, 7.3764



12.6639, -0.3970, 1.3554



21.2994, 14.0500, 13.3705



50.8471, 38.9010, 32.0127



# Inverse Universe

The Inverse Universe completely reimagines the original color for something new.



21.4567, -2.3995, -3.2930



26.7617, -3.2845, -5.8978



19.0126, 1.7529, -6.8438



12.5861, -0.9185, -0.0104



19.0064, 0.7849, -25.4508

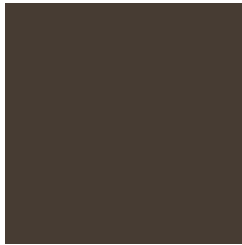


44.9009, 5.5713, -68.1490



# Previews

## White Background



This preview shows how the HunterLab color 21.9325, 0.7807, 5.0617 looks on a white background.

## Color Contrast Check

Large Text (above 18pt) WCAG AA ✓ Pass

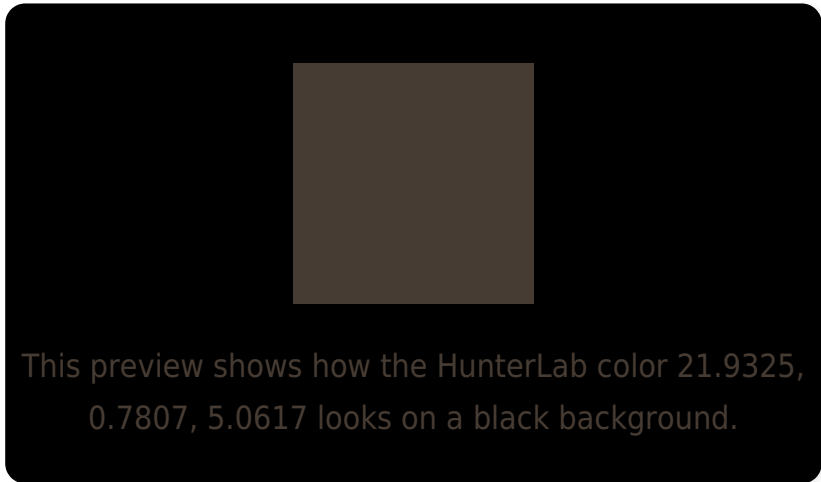
Any Text WCAG AA ✓ Pass

Large Text (above 18pt) WCAG AAA ✓ Pass

Any Text WCAG AAA ✓ Pass



# Black Background



## Color Contrast Check

Large Text (above 18pt) WCAG AA × Fail

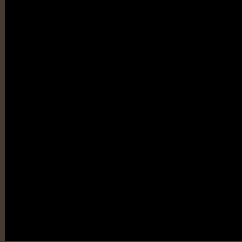
Any Text WCAG AA × Fail

Large Text (above 18pt) WCAG AAA × Fail

Any Text WCAG AAA × Fail

If you want to check with other color combinations, try the [Color Contrast Checker](#).

## HunterLab 21.9325, 0.7807, 5.0617 Background



This preview shows how black text looks on a background with the HunterLab color 21.9325, 0.7807, 5.0617.



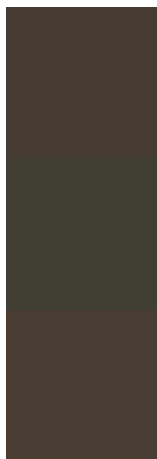
This preview shows how white text looks on a background with the HunterLab color 21.9325, 0.7807,



# Color Blindness Simulation

Color vision deficiency is a very complex topic, and I could not describe the different causes any better than Wikipedia does, so if you want to learn more, you should check out their [article about color blindness](#).

## Dichromacy



### Original Color

21.9325, 0.7807, 5.0617

### Protanopia

21.9477, -1.6276, 4.7191

### Deuteranopia

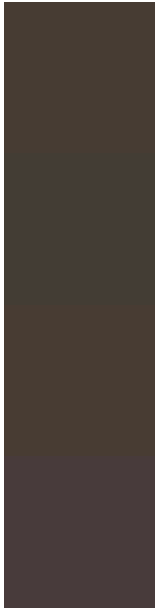
22.0192, 1.0741, 5.1536



## Tritanopia

21.8236, 3.3815, 0.7308

# Trichromacy



## Original Color

21.9325, 0.7807, 5.0617

## Protanomaly

21.8603, -0.6671, 4.6470

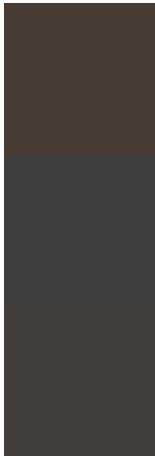
## Deuteranomaly

22.0192, 1.0741, 5.1536

## Tritanomaly

21.9577, 2.4306, 2.4003

# Monochromacy



## Original Color

21.9325, 0.7807, 5.0617

## Achromatopsia

21.9481, -1.1711, 1.1925

## Achromatomaly

21.8330, -0.4978, 2.5741

# CSS Examples

## Text

The CSS property to change the color of the text to HunterLab 21.9325, 0.7807, 5.0617 is called "color". The color property can be set on classes, ids or directly on the HTML element.

This example shows how text in the color `rgb(71, 60, 51)` looks like.

```
.text, #text, p{  
    color:rgb(71, 60, 51)  
}
```

If you want to add a text shadow in that color use the text-shadow property, you can generate a text shadow directly with our [CSS Text Shadow Generator](#).

Here you see how black text with a 4 pixel rgb(71, 60, 51) colored shadow looks like.

```
.shadow{ text-shadow: 4px 4px 2px rgb(71, 60, 51) }
```

## Border

The CSS property to change the border of an element to HunterLab 21.9325, 0.7807, 5.0617 is called "border". The border property can be set on classes, ids or directly on the HTML element.

This example shows the color as border, it can be applied via the CSS property "border" or "border-color".

```
.border, #border, table{ border:4px solid rgb(71, 60, 51) }
```



If only the border color should be changed use the property `border-color`.

```
.border{ border-color:rgb(71, 60, 51) }
```

If you want to add a box shadow in that color use:

Here you see how a box with a 4 pixel `rgb(71, 60, 51)` colored shadow looks like.

```
.boxshadow{ -moz-box-shadow:4px 4px 4px  
4px rgb(71, 60, 51); -webkit-box-  
shadow:4px 4px 4px 4px rgb(71, 60, 51);  
box-shadow:4px 4px 4px 4px rgb(71, 60, 51)  
}
```

# Background

The CSS property to change the background color of an element to HunterLab 21.9325, 0.7807, 5.0617 is called "background". The background property can be set on classes, ids or directly on the HTML element.

```
.background, #background, body{  
background: rgb(71, 60, 51) }
```

If only the background color should be changed can be used:

```
.background{ background-color: rgb(71, 60,  
51) }
```

This example shows the color as background, it is applied via the CSS property "background".

To optimize and compress your CSS code, you can use our [online CSS compressor and optimizer](#) based on csstidy. If you want to create a linear or radial gradient as background or border, check our [CSS Gradient Generator](#).

Hey! You found this booklet interesting? Support Converting Colors with the new Membership Option!

The pro membership hides all ads, plus gives you double the colors in the color bucket, and more awesome pro features!

**[Learn more, Memberships starting at \\$2.50/m!](#)**

**Follow me  
on Twitter!**

@ConvertingColor