

Converting Colors

HunterLab(22.1064, 0.8514,
5.8749)

Have a look what the booklet for
HunterLab(22.1064, 0.8514, 5.8749)
contains.

HunterLab(21.9800, 0.8630, 5.7210)	3
<i>Conversions</i>	4
<i>Details</i>	6
<i>Harmonies</i>	12
<i>Previews</i>	24
<i>Color Blindness Simulation</i>	28
<i>CSS Examples</i>	31

Color

**HunterLab(21.9800, 0.8630,
5.7210)**

Conversions

Conversions Part 1

Format	Color
Hex	483C31
RGB	72, 60, 49
RGB Percent	28%, 24%, 19%
CMY	0.7176, 0.7647, 0.8078
CMYK	0.00, 0.17, 0.32, 0.72
HSL	29°, 19%, 24%
HSV	29°, 32%, 28%
XYZ	4.8427, 4.8312, 3.5830
YIQ	62.3340, 10.6830, -0.8770

Conversions

Conversions Part 2

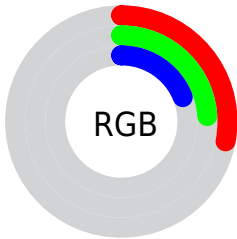
Format	Color
RYB	72, 70, 49
Decimal	4734001
CIELab	26.25, 3.26, 8.75
CIELCh	26, 9.338, 69.594
Yxy	4.8314, 0.3653, 0.3644
Android (android.graphics.Color)	4282924081 (0xFF483C31)
YUV	62.3340, -6.5737, 8.4771
Hunter-Lab	21.9800, 0.8630, 5.7210

Details

The HunterLab color **21.9800, 0.8630, 5.7210** is a dark color, and the websafe version is hex **333333**. A complement of this color would be **21.1145, -2.2468, -4.2445**, and the grayscale version is **22.0837, -1.1783, 1.1999**.

A 20% lighter version of the original color is **39.2512, 0.4727, 7.8410**, and **8.3559, 1.0562, 4.7598** is the 20% darker color. If you saturate the color by 10%, you get **20.9660, 1.7321, 6.8078**, and if you desaturate by 10%, it is **23.0321, 0.0794, 4.4961**.

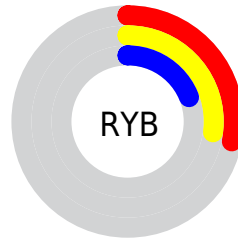
Distribution



Red (28%)

Green (24%)

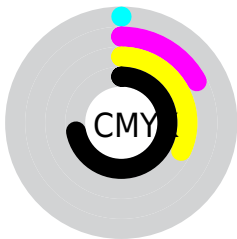
Blue (19%)



Red (28%)

Yellow (27%)

Blue (19%)

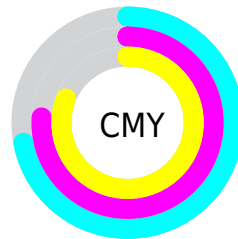


Cyan (0%)

Magenta (17%)

Yellow (32%)

Black (72%)



Cyan (72%)

Magenta (76%)

Yellow (81%)

Brightness & Saturation Gradients

These gradients show how the HunterLab color 21.9800, 0.8630, 5.7210 changes by changing the brightness by 10 percent. The first figure shows a shift by +10% for each color and the second figure -10%.

Similar to the brightness gradients but the following saturation gradients show a change of the HunterLab color 21.9800, 0.8630, 5.7210 by changing the saturation by 10% instead.

■ 21.9800, 0.8630,
5.7210

■ 21.9800, 0.8630,
5.7210

■ 121.7311, -2.9426,
15.3325

■ 14.6584, 1.0059,
4.6001

■ 39.3108, 0.3579,
7.8557

■ 8.3175, 1.2615,
4.8145

■ 49.1542, 0.0178,
8.9053

0.0000, NaN, NaN

0.0000, NaN, NaN

■ 59.7048, -0.3723,
9.9550

0.0000, NaN, NaN

■ 70.9178, -0.8078,
11.0099

0.0000, NaN, NaN

■ 82.7564, -1.2853,
12.0731

0.0000, NaN, NaN

0.0000, NaN, NaN

■ 95.1890, -1.8018,

13.1471

0.0000, NaN, NaN

108.1885, -2.3549,
14.2332

■ 21.9800, 0.8630,
5.7210

■ 21.9800, 0.8630,
5.7210

■ 20.9660, 1.7321,
6.8078

■ 23.0321, 0.0794,
4.4961

■ 19.9917, 2.6933,
7.7418

■ 24.1181, -0.6214,
3.1452

■ 19.0609, 3.7486,
8.5094

■ 25.2358, -1.2454,
1.6802

■ 18.1771, 4.8987,
9.0970

■ 26.3830, -1.7982,
0.1119

■ 17.3438, 6.1412,
9.4930

■ 27.5576, -2.2851,
-1.5501

■ 16.5613, 7.4527,
9.7392

■ 28.7577, -2.7110,
-3.2974

■ 15.9597, 8.5005,
9.9831

■ 29.9815, -3.0809,
-5.1224

■ 31.2277, -3.3992,
-7.0185

■ 32.4947, -3.6701,
-8.9798

Harmonies

Analogous

The Analogous color harmony consists of three colors that are next to each other on the color wheel.



21.9805, 3.4236, 4.3982



21.9800, 0.8630, 5.7210



21.9805, -2.1220, 5.9259

Triad

The Triadic color harmony groups three colors that are evenly spaced from another and form a triangle on the color wheel.



21.9805, 0.8622, 5.7213



21.9805, -6.5494, 0.2674



21.9805, 2.6031, -3.4379

Complementary

The Complementary color scheme is a pair of colors which are on the opposite of each other on the color wheel.



21.9800, 0.8630, 5.7210



21.1145, -2.2468, -4.2445

Split Complementary

Split-complementary colors differ from the complementary color scheme. The scheme consists of three colors, the original color and two neighbors of the complement color.



21.9805, -0.2097, -4.8933



21.9800, 0.8630, 5.7210



21.9805, -5.4223, -2.5736

Square

The Square scheme is like the rectangle color scheme, but the four colors are evenly spaced on the color wheel.



21.9805, 0.8622, 5.7213



21.9805, -6.2965, 3.0155



21.9805, -3.1387, -4.5575



21.9805, 4.4653, -0.7927

Rectangle

The Rectangle color scheme consists of four colors that form a rectangle on the color wheel.



21.9800, 0.8630, 5.7210



21.9805, -3.9360, 5.4325



21.9805, -3.1387, -4.5575



21.9805, 1.7315, -4.0975

Sweetspot

The Sweet Spot groups the original color and five complimentary colors.



21.9805, 0.8622, 5.7213



32.0452, -0.9532, 3.8610



19.7844, 7.0635, -1.0292



16.4921, -0.4603, 2.0631



65.8695, -3.5146, 3.5788



17.3419, -0.9253, 0.9422

Same Dimension

The Same Dimension uses a secret algorithm to generate beautiful new colors.



21.9805, 0.8622, 5.7213



27.9806, 1.9970, 8.6531



24.7704, -3.7501, 8.2425



12.6865, -0.4350, 1.3801



21.8105, 12.8543, 13.6646



52.1210, 35.7921, 32.7433

Inverse Universe

The Inverse Universe completely reimagines the original color for something new.



21.1145, -2.2468, -4.2445



26.5797, -3.0104, -7.4804



18.3908, 2.4375, -8.3905



12.5632, -0.8808, -0.0381



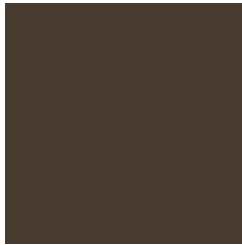
18.3159, 2.0211, -27.2562



43.1192, 8.9202, -73.1515

Previews

White Background



This preview shows how the HunterLab color 21.9800, 0.8630, 5.7210 looks on a white background.

Color Contrast Check

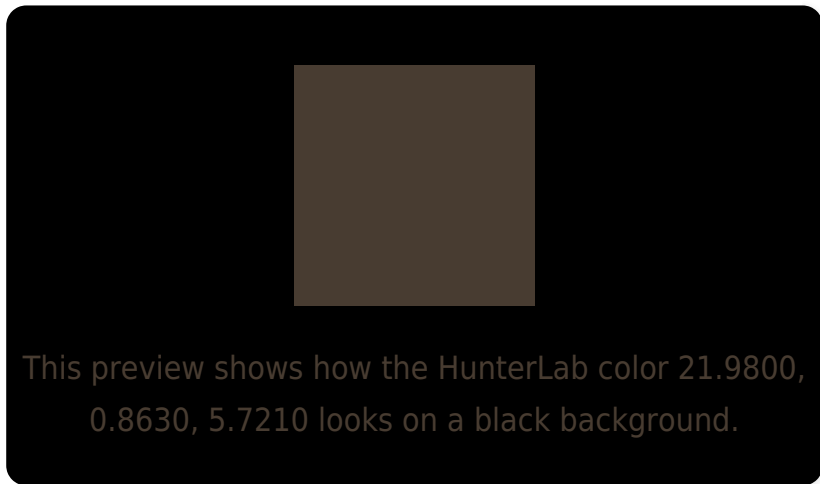
Large Text (above 18pt) WCAG AA ✓ Pass

Any Text WCAG AA ✓ Pass

Large Text (above 18pt) WCAG AAA ✓ Pass

Any Text WCAG AAA ✓ Pass

Black Background



Color Contrast Check

Large Text (above 18pt) WCAG AA × Fail

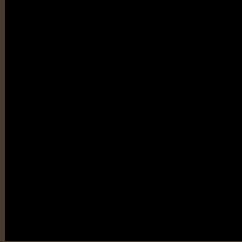
Any Text WCAG AA × Fail

Large Text (above 18pt) WCAG AAA × Fail

Any Text WCAG AAA × Fail

If you want to check with other color combinations, try the [Color Contrast Checker](#).

HunterLab 21.9800, 0.8630, 5.7210 Background



This preview shows how black text looks on a background with the HunterLab color 21.9800, 0.8630, 5.7210.

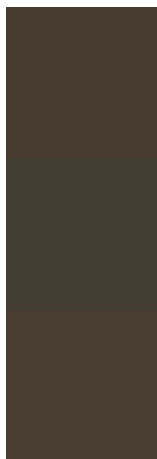


This preview shows how white text looks on a background with the HunterLab color 21.9800, 0.8630,

Color Blindness Simulation

Color vision deficiency is a very complex topic, and I could not describe the different causes any better than Wikipedia does, so if you want to learn more, you should check out their [article about color blindness](#).

Dichromacy



Original Color

21.9800, 0.8630, 5.7210

Protanopia

21.9859, -1.5742, 5.3824

Deuteranopia

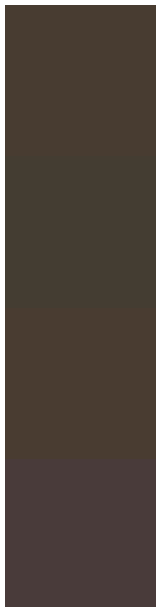
22.0679, 1.1603, 5.8116



Tritanopia

21.9122, 3.6706, 0.8421

Trichromacy



Original Color

21.9800, 0.8630, 5.7210

Protanomaly

21.9014, -0.6056, 5.3159

Deuteranomaly

22.0679, 1.1603, 5.8116

Tritanomaly

22.0225, 2.5982, 2.8386

Monochromacy



Original Color

21.9800, 0.8630, 5.7210

Achromatopsia

21.9481, -1.1711, 1.1925

Achromatomaly

21.8887, -0.3521, 2.9964

CSS Examples

Text

The CSS property to change the color of the text to HunterLab 21.9800, 0.8630, 5.7210 is called "color". The color property can be set on classes, ids or directly on the HTML element.

This example shows how text in the color `rgb(72, 60, 49)` looks like.

```
.text, #text, p{  
    color:rgb(72, 60, 49)  
}
```

If you want to add a text shadow in that color use the text-shadow property, you can generate a text shadow directly with our [CSS Text Shadow Generator](#).

Here you see how black text with a 4 pixel rgb(72, 60, 49) colored shadow looks like.

```
.shadow{ text-shadow: 4px 4px 2px rgb(72, 60, 49) }
```

Border

The CSS property to change the border of an element to HunterLab 21.9800, 0.8630, 5.7210 is called "border".

The border property can be set on classes, ids or directly on the HTML element.

This example shows the color as border, it can be applied via the CSS property "border" or "border-color".

```
.border, #border, table{ border:4px solid rgb(72, 60, 49) }
```


If only the border color should be changed use the property `border-color`.

```
.border{ border-color:rgb(72, 60, 49) }
```

If you want to add a box shadow in that color use:

Here you see how a box with a 4 pixel `rgb(72, 60, 49)` colored shadow looks like.

```
.boxshadow{ -moz-box-shadow:4px 4px 4px  
4px rgb(72, 60, 49); -webkit-box-  
shadow:4px 4px 4px 4px rgb(72, 60, 49);  
box-shadow:4px 4px 4px 4px rgb(72, 60, 49)  
}
```

Background

The CSS property to change the background color of an element to HunterLab 21.9800, 0.8630, 5.7210 is called "background". The background property can be set on classes, ids or directly on the HTML element.

```
.background, #background, body{  
background: rgb(72, 60, 49) }
```

If only the background color should be changed can be used:

```
.background{ background-color: rgb(72, 60,  
49) }
```

This example shows the color as background, it is applied via the CSS property "background".

To optimize and compress your CSS code, you can use our [online CSS compressor and optimizer](#) based on csstidy. If you want to create a linear or radial gradient as background or border, check our [CSS Gradient Generator](#).

Hey! You found this booklet interesting? Support Converting Colors with the new Membership Option!

The pro membership hides all ads, plus gives you double the colors in the color bucket, and more awesome pro features!

[Learn more, Memberships starting at \\$2.50/m!](#)

**Follow me
on Twitter!**

@ConvertingColor