

Converting Colors

HunterLab(22.1275, 1.3653,
7.8792)

Have a look what the booklet for
HunterLab(22.1275, 1.3653, 7.8792)
contains.

HunterLab(22.2157, 1.4114, 7.8679)	3
<i>Conversions</i>	4
<i>Details</i>	6
<i>Harmonies</i>	12
<i>Previews</i>	24
<i>Color Blindness Simulation</i>	28
<i>CSS Examples</i>	31

Color

**HunterLab(22.2157, 1.4114,
7.8679)**

Conversions

Conversions Part 1

Format	Color
Hex	4C3C2A
RGB	76, 60, 42
RGB Percent	30%, 24%, 16%
CMY	0.7020, 0.7647, 0.8353
CMYK	0.00, 0.21, 0.45, 0.70
HSL	32°, 29%, 23%
HSV	32°, 45%, 30%
XYZ	5.0143, 4.9354, 2.8788
YIQ	62.7320, 15.3140, -2.2060

Conversions

Conversions Part 2

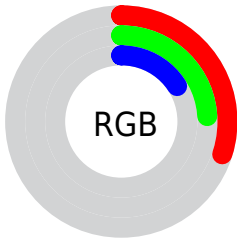
Format	Color
RYB	72, 76, 42
Decimal	4996138
CIELab	26.55, 4.12, 13.78
CIElCh	27, 14.383, 73.357
Yxy	4.9356, 0.3909, 0.3847
Android (android.graphics.Color)	4283186218 (0xFF4C3C2A)
YUV	62.7320, -10.2209, 11.6360
Hunter-Lab	22.2157, 1.4114, 7.8679

Details

The HunterLab color **22.2157, 1.4114, 7.8679** is a dark color, and the websafe version is hex **333333**. A complement of this color would be **20.0998, -1.6735, -7.8130**, and the grayscale version is **22.2329, -1.1863, 1.2080**.

A 20% lighter version of the original color is **39.5463, 1.1271, 10.8695**, and **8.6005, 1.8012, 5.3311** is the 20% darker color. If you saturate the color by 10%, you get **21.2700, 2.3038, 8.8434**, and if you desaturate by 10%, it is **23.2007, 0.6164, 6.7104**.

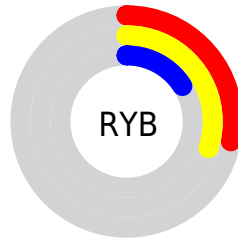
Distribution



Red (30%)

Green (24%)

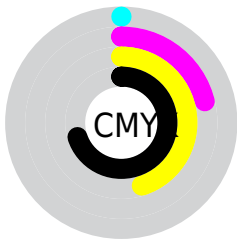
Blue (16%)



Red (28%)

Yellow (30%)

Blue (16%)

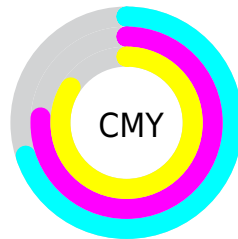


Cyan (0%)

Magenta (21%)

Yellow (45%)

Black (70%)



Cyan (70%)

Magenta (76%)

Yellow (84%)

Brightness & Saturation Gradients

These gradients show how the HunterLab color 22.2157, 1.4114, 7.8679 changes by changing the brightness by 10 percent. The first figure shows a shift by +10% for each color and the second figure -10%.

Similar to the brightness gradients but the following saturation gradients show a change of the HunterLab color 22.2157, 1.4114, 7.8679 by changing the saturation by 10% instead.

■ 22.2157, 1.4114,
7.8679

■ 22.2157, 1.4114,
7.8679

■ 122.1477, -2.0092,
20.0704

■ 14.8645, 1.4932,
6.2842

■ 39.5967, 1.0116,
10.7555

■ 8.5158, 1.6530,
5.9610

■ 49.4622, 0.7183,
12.1256

0.0000, NaN, NaN

0.0000, NaN, NaN

■ 60.0334, 0.3720,
13.4700

0.0000, NaN, NaN

■ 71.2658, -0.0221,
14.7988

0.0000, NaN, NaN

■ 83.1227, -0.4601,
16.1189

0.0000, NaN, NaN

0.0000, NaN, NaN

■ 95.5728, -0.9390,

17.4352

0.0000, NaN, NaN

108.5890, -1.4561,
18.7515

22.2157, 1.4114,
7.8679

22.2157, 1.4114,
7.8679

21.2700, 2.3038,
8.8434

23.2007, 0.6164,
6.7104

20.3648, 3.2988,
9.6227

24.2210, -0.0825,
5.3836

19.5034, 4.3961,
10.1945

25.2747, -0.6911,
3.9014

18.6883, 5.5933,
10.5503

26.3594, -1.2146,
2.2765

17.9161, 6.8525,
10.7796

27.4732, -1.6585,
0.5209

■ 17.5222, 7.5110,
10.9286

■ 28.6142, -2.0281,
-1.3546

■ 29.7805, -2.3287,
-3.3398

■ 30.9708, -2.5652,
-5.4258

■ 32.1834, -2.7424,
-7.6046

Harmonies

Analogous

The Analogous color harmony consists of three colors that are next to each other on the color wheel.



22.2162, 5.6354, 6.2560



22.2157, 1.4114, 7.8679



22.2162, -3.1983, 7.9505

Triad

The Triadic color harmony groups three colors that are evenly spaced from another and form a triangle on the color wheel.



22.2162, 1.4105, 7.8682



22.2162, -9.1726, -0.8290



22.2162, 5.2349, -5.8397

Complementary

The Complementary color scheme is a pair of colors which are on the opposite of each other on the color wheel.



22.2157, 1.4114, 7.8679



20.0998, -1.6735, -7.8130

Split Complementary

Split-complementary colors differ from the complementary color scheme. The scheme consists of three colors, the original color and two neighbors of the complement color.



22.2162, 0.8993, -8.6628



22.2157, 1.4114, 7.8679



22.2162, -7.2733, -5.3964

Square

The Square scheme is like the rectangle color scheme, but the four colors are evenly spaced on the color wheel.



22.2162, 1.4105, 7.8682



22.2162, -9.0602, 3.4921



22.2162, -3.6696, -8.4858



22.2162, 7.9637, -1.3448

Rectangle

The Rectangle color scheme consists of four colors that form a rectangle on the color wheel.



22.2157, 1.4114, 7.8679



22.2162, -5.8552, 7.1642



22.2162, -3.6696, -8.4858



22.2162, 3.9025, -7.0531

Sweetspot

The Sweet Spot groups the original color and five complimentary colors.



22.2162, 1.4105, 7.8682



33.5434, -1.0041, 4.8945



18.7147, 10.9645, -1.1420



17.0966, -0.4628, 2.6540



66.9319, -3.5713, 3.6365



18.1947, -0.9708, 0.9886

Same Dimension

The Same Dimension uses a secret algorithm to generate beautiful new colors.



22.2162, 1.4105, 7.8682



27.9197, 3.2075, 11.8265



26.1714, -5.3002, 11.0714



13.5055, -0.5305, 1.5269



23.3744, 11.0151, 14.5960



55.2630, 30.4638, 34.5861

Inverse Universe

The Inverse Universe completely reimagines the original color for something new.



20.0998, -1.6735, -7.8130



24.4806, -1.6928, -13.8080



16.3770, 5.2452, -14.5706



13.2827, -0.8645, -0.1102



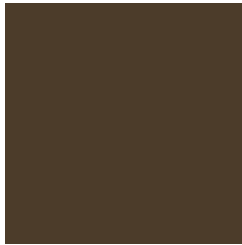
17.5293, 4.5058, -31.6369



40.5063, 15.3713, -83.8116

Previews

White Background



This preview shows how the HunterLab color 22.2157, 1.4114, 7.8679 looks on a white background.

Color Contrast Check

Large Text (above 18pt) WCAG AA ✓ Pass

Any Text WCAG AA ✓ Pass

Large Text (above 18pt) WCAG AAA ✓ Pass

Any Text WCAG AAA ✓ Pass

Black Background



This preview shows how the HunterLab color 22.2157, 1.4114, 7.8679 looks on a black background.

Color Contrast Check

Large Text (above 18pt) WCAG AA × Fail

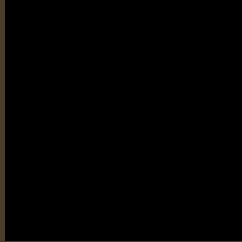
Any Text WCAG AA × Fail

Large Text (above 18pt) WCAG AAA × Fail

Any Text WCAG AAA × Fail

If you want to check with other color combinations, try the [Color Contrast Checker](#).

HunterLab 22.2157, 1.4114, 7.8679 Background



This preview shows how black text looks on a background with the HunterLab color 22.2157, 1.4114, 7.8679.

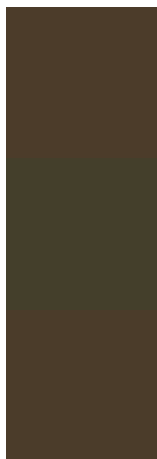


This preview shows how white text looks on a background with the HunterLab color 22.2157, 1.4114,

Color Blindness Simulation

Color vision deficiency is a very complex topic, and I could not describe the different causes any better than Wikipedia does, so if you want to learn more, you should check out their [article about color blindness](#).

Dichromacy



Original Color

22.2157, 1.4114, 7.8679

Protanopia

22.2674, -2.1139, 7.5986

Deuteranopia

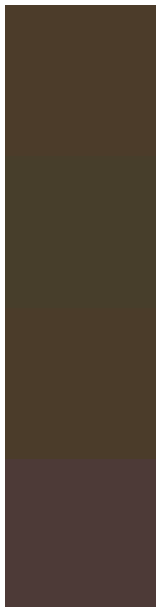
22.1241, 1.1026, 7.7818



Tritanopia

22.1218, 5.4604, 1.5123

Trichromacy



Original Color

22.2157, 1.4114, 7.8679

Protanomaly

22.2694, -0.8402, 7.6227

Deuteranomaly

22.1241, 1.1026, 7.7818

Tritanomaly

22.0901, 3.8719, 3.9785

Monochromacy



Original Color

22.2157, 1.4114, 7.8679

Achromatopsia

22.2950, -1.1896, 1.2113

Achromatomaly

22.2487, -0.4562, 4.0695

CSS Examples

Text

The CSS property to change the color of the text to HunterLab 22.2157, 1.4114, 7.8679 is called "color". The color property can be set on classes, ids or directly on the HTML element.

This example shows how text in the color `rgb(76, 60, 42)` looks like.

```
.text, #text, p{  
    color:rgb(76, 60, 42)  
}
```

If you want to add a text shadow in that color use the text-shadow property, you can generate a text shadow directly with our [CSS Text Shadow Generator](#).

Here you see how black text with a 4 pixel rgb(76, 60, 42) colored shadow looks like.

```
.shadow{ text-shadow: 4px 4px 2px rgb(76, 60, 42) }
```

Border

The CSS property to change the border of an element to HunterLab 22.2157, 1.4114, 7.8679 is called "border".

The border property can be set on classes, ids or directly on the HTML element.

This example shows the color as border, it can be applied via the CSS property "border" or "border-color".

```
.border, #border, table{ border:4px solid rgb(76, 60, 42) }
```


If only the border color should be changed use the property `border-color`.

```
.border{ border-color:rgb(76, 60, 42) }
```

If you want to add a box shadow in that color use:

Here you see how a box with a 4 pixel `rgb(76, 60, 42)` colored shadow looks like.

```
.boxshadow{ -moz-box-shadow:4px 4px 4px  
4px rgb(76, 60, 42); -webkit-box-  
shadow:4px 4px 4px 4px rgb(76, 60, 42);  
box-shadow:4px 4px 4px 4px rgb(76, 60, 42)  
}
```

Background

The CSS property to change the background color of an element to HunterLab 22.2157, 1.4114, 7.8679 is called "background". The background property can be set on classes, ids or directly on the HTML element.

```
.background, #background, body{  
background: rgb(76, 60, 42) }
```

If only the background color should be changed can be used:

```
.background{ background-color: rgb(76, 60,  
42) }
```

This example shows the color as background, it is applied via the CSS property "background".

To optimize and compress your CSS code, you can use our [online CSS compressor and optimizer](#) based on csstidy. If you want to create a linear or radial gradient as background or border, check our [CSS Gradient Generator](#).

Hey! You found this booklet interesting? Support Converting Colors with the new Membership Option!

The pro membership hides all ads, plus gives you double the colors in the color bucket, and more awesome pro features!

[Learn more, Memberships starting at \\$2.50/m!](#)

**Follow me
on Twitter!**

@ConvertingColor