

Converting Colors

HunterLab(22.1577, 2.0633,
4.4983)

Have a look what the booklet for
HunterLab(22.1577, 2.0633, 4.4983)
contains.

HunterLab(22.2574, 1.9968, 4.4530)	3
<i>Conversions</i>	4
<i>Details</i>	6
<i>Harmonies</i>	12
<i>Previews</i>	24
<i>Color Blindness Simulation</i>	28
<i>CSS Examples</i>	31

Color

**HunterLab(22.2574, 1.9968,
4.4530)**

Conversions

Conversions Part 1

Format	Color
Hex	4A3C36
RGB	74, 60, 54
RGB Percent	29%, 24%, 21%
CMY	0.7098, 0.7647, 0.7882
CMYK	0.00, 0.19, 0.27, 0.71
HSL	18°, 16%, 25%
HSV	18°, 27%, 29%
XYZ	5.1058, 4.9539, 4.1771
YIQ	63.5020, 10.2700, 1.1020

Conversions

Conversions Part 2

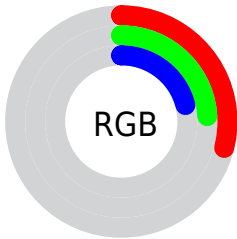
Format	Color
R_{YB}	74, 63, 54
Decimal	4865078
CIE Lab	26.60, 5.02, 6.00
CIE LCh	27, 7.826, 50.064
Yxy	4.9541, 0.3586, 0.3480
Android (android.graphics.Color)	4283055158 (0xFF4A3C36)
YUV	63.5020, -4.6845, 9.2067
Hunter-Lab	22.2574, 1.9968, 4.4530

Details

The HunterLab color **22.2574, 1.9968, 4.4530** is a dark color, and the websafe version is hex **333333**. A complement of this color would be **23.2654, -3.6998, -2.2390**, and the grayscale version is **22.4832, -1.1996, 1.2216**.

A 20% lighter version of the original color is **39.5802, 1.8774, 5.9791**, and **8.6362, 2.1694, 3.3881** is the 20% darker color. If you saturate the color by 10%, you get **20.9128, 3.4075, 5.4407**, and if you desaturate by 10%, it is **23.6613, 0.6724, 3.3868**.

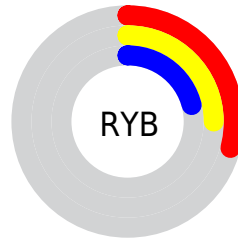
Distribution



Red (29%)

Green (24%)

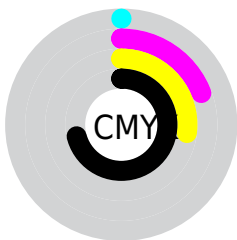
Blue (21%)



Red (29%)

Yellow (25%)

Blue (21%)

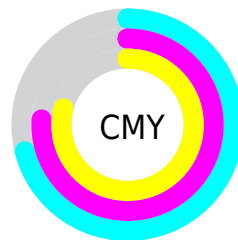


Cyan (0%)

Magenta (19%)

Yellow (27%)

Black (71%)



Cyan (71%)

Magenta (76%)

Yellow (79%)

Brightness & Saturation Gradients

These gradients show how the HunterLab color 22.2574, 1.9968, 4.4530 changes by changing the brightness by 10 percent. The first figure shows a shift by +10% for each color and the second figure -10%.

Similar to the brightness gradients but the following saturation gradients show a change of the HunterLab color 22.2574, 1.9968, 4.4530 by changing the saturation by 10% instead.

■ 22.2574, 1.9968,
4.4530

■ 22.2574, 1.9968,
4.4530

■ 122.2212, -1.0119,
12.7042

■ 14.9009, 2.0135,
3.5747

■ 39.6473, 1.7098,
6.1941

■ 8.5503, 2.1036,
3.3747

■ 49.5167, 1.4665,
7.0757

0.0000, NaN, NaN

0.0000, NaN, NaN

■ 60.0914, 1.1672,
7.9709

0.0000, NaN, NaN

■ 71.3273, 0.8174,
8.8819

0.0000, NaN, NaN

■ 83.1874, 0.4214,
9.8100

0.0000, NaN, NaN

0.0000, NaN, NaN

■ 95.6406, -0.0173,

10.7561

0.0000, NaN, NaN

108.6597, -0.4959,
11.7208

■ 22.2574, 1.9968,
4.4530

■ 22.2574, 1.9968,
4.4530

■ 20.9128, 3.4075,
5.4407

■ 23.6613, 0.6724,
3.3868

■ 19.6329, 4.9105,
6.3343

■ 25.1171, -0.5693,
2.2531

■ 18.4260, 6.5053,
7.1165

■ 26.6200, -1.7356,
1.0622

■ 17.3011, 8.1861,
7.7674

■ 28.1656, -2.8336,
-0.1781

■ 16.2678, 9.9386,
8.2653

■ 29.7501, -3.8699,
-1.4613

■ 15.3362, 11.7361,
8.5897

■ 31.3702, -4.8508,
-2.7823

■ 14.5036, 13.4796,
8.9147

■ 33.0230, -5.7821,
-4.1368

■ 14.2744, 13.9716,
9.0404

■ 34.7061, -6.6692,
-5.5214

■ 36.4173, -7.5166,
-6.9333

Harmonies

Analogous

The Analogous color harmony consists of three colors that are next to each other on the color wheel.



22.2579, 3.5302, 2.7304



22.2574, 1.9968, 4.4530



22.2579, -0.3496, 5.2774

Triad

The Triadic color harmony groups three colors that are evenly spaced from another and form a triangle on the color wheel.



22.2579, 1.9960, 4.4533



22.2579, -5.7477, 1.9895



22.2579, 0.4919, -3.5487

Complementary

The Complementary color scheme is a pair of colors which are on the opposite of each other on the color wheel.



22.2574, 1.9968, 4.4530



23.2654, -3.6998, -2.2390

Split Complementary

Split-complementary colors differ from the complementary color scheme. The scheme consists of three colors, the original color and two neighbors of the complement color.



22.2579, -2.0158, -3.8038



22.2574, 1.9968, 4.4530



22.2579, -5.5448, -0.4224

Square

The Square scheme is like the rectangle color scheme, but the four colors are evenly spaced on the color wheel.



22.2579, 1.9960, 4.4533



22.2579, -4.7712, 3.9628



22.2579, -4.2041, -2.6056



22.2579, 2.6355, -1.9430

Rectangle

The Rectangle color scheme consists of four colors that form a rectangle on the color wheel.



22.2574, 1.9968, 4.4530



22.2579, -2.0263, 5.2759



22.2579, -4.2041, -2.6056



22.2579, -0.3388, -3.8016

Sweetspot

The Sweet Spot groups the original color and five complimentary colors.



22.2579, 1.9960, 4.4533



32.8986, -0.5463, 3.1706



21.2405, 6.4164, -2.0650



16.4303, -0.2008, 1.6618



65.8695, -3.5146, 3.5788



17.3419, -0.9253, 0.9422

Same Dimension

The Same Dimension uses a secret algorithm to generate beautiful new colors.



22.2579, 1.9960, 4.4533



28.2611, 3.7800, 6.7022



24.7034, -2.1879, 6.8073



13.3073, -0.1961, 1.3096



19.4536, 20.6369, 12.3485



45.8045, 54.6507, 29.1813

Inverse Universe

The Inverse Universe completely reimagines the original color for something new.



23.2654, -3.6998, -2.2390



29.8812, -5.4044, -4.0732



20.7482, 0.4303, -5.7208



13.4849, -1.1956, 0.1326



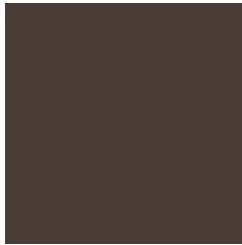
23.4856, -5.5567, -17.3597



55.7190, -11.3536, -45.1347

Previews

White Background



This preview shows how the HunterLab color 22.2574, 1.9968, 4.4530 looks on a white background.

Color Contrast Check

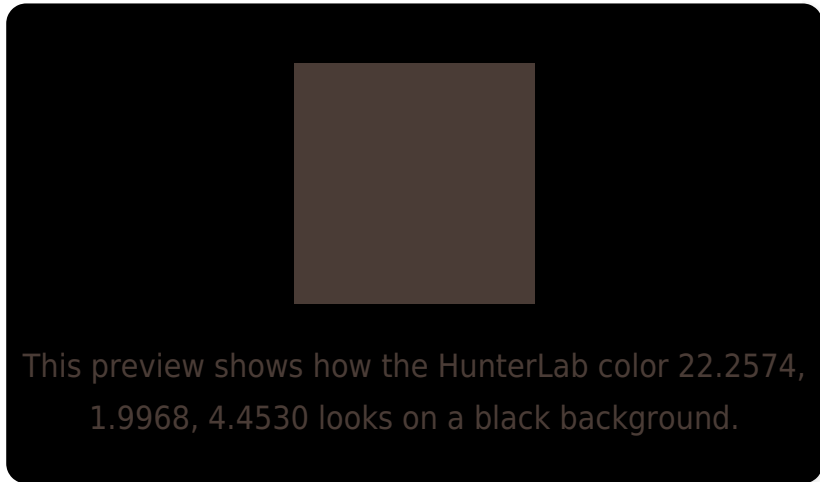
Large Text (above 18pt) WCAG AA ✓ Pass

Any Text WCAG AA ✓ Pass

Large Text (above 18pt) WCAG AAA ✓ Pass

Any Text WCAG AAA ✓ Pass

Black Background



Color Contrast Check

Large Text (above 18pt) WCAG AA × Fail

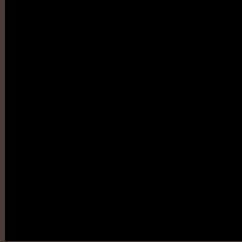
Any Text WCAG AA × Fail

Large Text (above 18pt) WCAG AAA × Fail

Any Text WCAG AAA × Fail

If you want to check with other color combinations, try the [Color Contrast Checker](#).

HunterLab 22.2574, 1.9968, 4.4530 Background



This preview shows how black text looks on a background with the HunterLab color 22.2574, 1.9968, 4.4530.

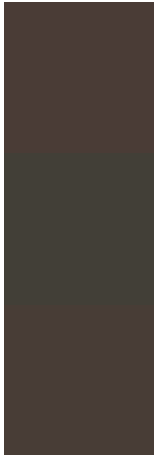


This preview shows how white text looks on a background with the HunterLab color 22.2574, 1.9968,

Color Blindness Simulation

Color vision deficiency is a very complex topic, and I could not describe the different causes any better than Wikipedia does, so if you want to learn more, you should check out their [article about color blindness](#).

Dichromacy



Original Color

22.2574, 1.9968, 4.4530

Protanopia

22.3363, -1.4178, 4.1445

Deuteranopia

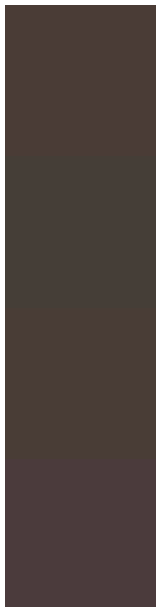
22.3194, 0.9854, 4.4993



Tritanopia

22.3219, 3.8212, 1.3307

Trichromacy



Original Color

22.2574, 1.9968, 4.4530

Protanomaly

22.3300, -0.1764, 4.1596

Deuteranomaly

22.4060, 1.2778, 4.5937

Tritanomaly

22.2487, 3.4359, 2.3774

Monochromacy



Original Color

22.2574, 1.9968, 4.4530

Achromatopsia

22.6428, -1.2082, 1.2302

Achromatomaly

22.6058, -0.2605, 2.7127

CSS Examples

Text

The CSS property to change the color of the text to HunterLab 22.2574, 1.9968, 4.4530 is called "color". The color property can be set on classes, ids or directly on the HTML element.

This example shows how text in the color `rgb(74, 60, 54)` looks like.

```
.text, #text, p{  
    color:rgb(74, 60, 54)  
}
```

If you want to add a text shadow in that color use the text-shadow property, you can generate a text shadow directly with our [CSS Text Shadow Generator](#).

Here you see how black text with a 4 pixel rgb(74, 60, 54) colored shadow looks like.

```
.shadow{ text-shadow: 4px 4px 2px rgb(74, 60, 54) }
```

Border

The CSS property to change the border of an element to HunterLab 22.2574, 1.9968, 4.4530 is called "border". The border property can be set on classes, ids or directly on the HTML element.

This example shows the color as border, it can be applied via the CSS property "border" or "border-color".

```
.border, #border, table{ border:4px solid rgb(74, 60, 54) }
```


If only the border color should be changed use the property `border-color`.

```
.border{ border-color:rgb(74, 60, 54) }
```

If you want to add a box shadow in that color use:

Here you see how a box with a 4 pixel `rgb(74, 60, 54)` colored shadow looks like.

```
.boxshadow{ -moz-box-shadow:4px 4px 4px  
4px rgb(74, 60, 54); -webkit-box-  
shadow:4px 4px 4px 4px rgb(74, 60, 54);  
box-shadow:4px 4px 4px 4px rgb(74, 60, 54)  
}
```

Background

The CSS property to change the background color of an element to HunterLab 22.2574, 1.9968, 4.4530 is called "background". The background property can be set on classes, ids or directly on the HTML element.

```
.background, #background, body{  
background: rgb(74, 60, 54) }
```

If only the background color should be changed can be used:

```
.background{ background-color: rgb(74, 60,  
54) }
```

This example shows the color as background, it is applied via the CSS property "background".

To optimize and compress your CSS code, you can use our [online CSS compressor and optimizer](#) based on csstidy. If you want to create a linear or radial gradient as background or border, check our [CSS Gradient Generator](#).

Hey! You found this booklet interesting? Support Converting Colors with the new Membership Option!

The pro membership hides all ads, plus gives you double the colors in the color bucket, and more awesome pro features!

[Learn more, Memberships starting at \\$2.50/m!](#)

**Follow me
on Twitter!**

@ConvertingColor