

Converting Colors

HunterLab(22.1614, 11.1323,
5.3166)

Have a look what the booklet for
HunterLab(22.1614, 11.1323,
5.3166) contains.

HunterLab(22.0952, 11.3808, 5.4099)	3
<i>Conversions</i>	4
<i>Details</i>	6
<i>Harmonies</i>	12
<i>Previews</i>	24
<i>Color Blindness Simulation</i>	28
<i>CSS Examples</i>	31

Color

**HunterLab(22.0952, 11.3808,
5.4099)**

Conversions

Conversions Part 1

Format	Color
Hex	5C3333
RGB	92, 51, 51
RGB Percent	36%, 20%, 20%
CMY	0.6392, 0.8000, 0.8000
CMYK	0.00, 0.45, 0.45, 0.64
HSL	0°, 29%, 28%
HSV	0°, 45%, 36%
XYZ	6.1950, 4.8820, 3.7478
YIQ	63.2590, 24.4360, 8.6920

Conversions

Conversions Part 2

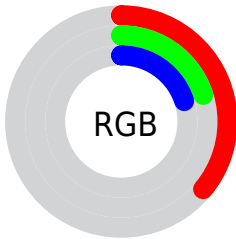
Format	Color
RYB	92, 51, 51
Decimal	6042419
CIELab	26.40, 18.48, 8.04
CIElCh	26, 20.151, 23.512
Yxy	4.8822, 0.4179, 0.3293
Android (android.graphics.Color)	4284232499 (0xFF5C3333)
YUV	63.2590, -6.0437, 25.2059
Hunter-Lab	22.0952, 11.3808, 5.4099

Details

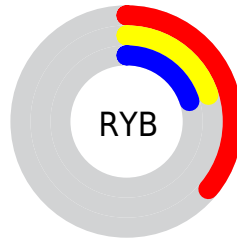
The HunterLab color **22.0952, 11.3808, 5.4099** is a dark color, and the websafe version is hex **663333**. A complement of this color would be **30.2166, -10.7952, -1.4370**, and the grayscale version is **22.3998, -1.1952, 1.2170**.

A 20% lighter version of the original color is **39.4052, 12.7003, 7.4875**, and **8.3570, 9.7695, 4.3019** is the 20% darker color. If you saturate the color by 10%, you get **20.2066, 14.5403, 6.3332**, and if you desaturate by 10%, it is **24.2005, 8.2553, 4.5151**.

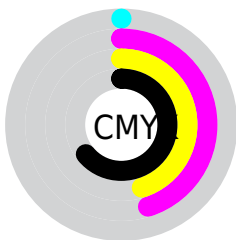
Distribution



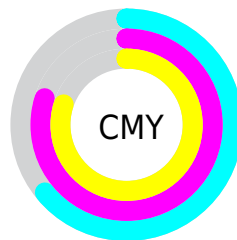
- Red (36%)
- Green (20%)
- Blue (20%)



- Red (36%)
- Yellow (20%)
- Blue (20%)



- Cyan (0%)
- Magenta (45%)
- Yellow (45%)
- Black (64%)



- Cyan (64%)
- Magenta (80%)
- Yellow (80%)

Brightness & Saturation Gradients

These gradients show how the HunterLab color 22.0952, 11.3808, 5.4099 changes by changing the brightness by 10 percent. The first figure shows a shift by +10% for each color and the second figure -10%.

Similar to the brightness gradients but the following saturation gradients show a change of the HunterLab color 22.0952, 11.3808, 5.4099 by changing the saturation by 10% instead.

■ 22.0952, 11.3808,
5.4099

■ 22.0952, 11.3808,
5.4099

■ 121.9349, 14.2397,
14.6643

■ 14.7591, 10.5251,
4.3536

■ 39.4506, 12.6574,
7.4407

■ 8.4151, 9.8130,
4.4179

■ 49.3049, 13.1232,
8.4460

0.0000, INF, NaN

0.0000, NaN, NaN

■ 59.8655, 13.4941,
9.4552

0.0000, NaN, NaN

■ 71.0881, 13.7809,
10.4723

0.0000, NaN, NaN

■ 82.9356, 13.9925,
11.5002

0.0000, NaN, NaN

0.0000, NaN, NaN

■ 95.3767, 14.1358,

12.5407

0.0000, NaN, NaN

108.3844, 14.2166,
13.5951

■ 22.0952, 11.3808,
5.4099

■ 22.0952, 11.3808,
5.4099

■ 20.2066, 14.5403,
6.3332

■ 24.2005, 8.2553,
4.5151

■ 18.5708, 17.6319,
7.2513

■ 26.4874, 5.2225,
3.6636

■ 17.2272, 20.4872,
8.1112

■ 28.9286, 2.3026,
2.8611

■ 16.2086, 22.8889,
8.8424

■ 31.5014, -0.5019,
2.1068

■ 15.4755, 24.7687,
9.4194

■ 34.1874, -3.1986,
1.3967

■ 15.0845, 25.8308,
9.7472

■ 36.9721, -5.7989,
0.7260

■ 39.8435, -8.3158,
0.0896

■ 42.7921, -10.7613,
-0.5173

■ 45.8098, -13.1466,
-1.0991

Harmonies

Analogous

The Analogous color harmony consists of three colors that are next to each other on the color wheel.



22.0958, 12.5405, -0.1722



22.0952, 11.3808, 5.4099



22.0958, 6.6881, 8.7402

Triad

The Triadic color harmony groups three colors that are evenly spaced from another and form a triangle on the color wheel.



22.0958, 11.3796, 5.4103



22.0958, -10.2924, 7.1305



22.0958, -2.5640, -14.0218

Complementary

The Complementary color scheme is a pair of colors which are on the opposite of each other on the color wheel.



22.0952, 11.3808, 5.4099



30.2166, -10.7952, -1.4370

Split Complementary

Split-complementary colors differ from the complementary color scheme. The scheme consists of three colors, the original color and two neighbors of the complement color.



22.0958, -8.0814, -10.5388



22.0952, 11.3808, 5.4099



22.0958, -12.2009, 2.4946

Square

The Square scheme is like the rectangle color scheme, but the four colors are evenly spaced on the color wheel.



22.0958, 11.3796, 5.4103



22.0958, -5.9129, 9.5159



22.0958, -11.4404, -4.0399



22.0958, 3.9879, -12.5792

Rectangle

The Rectangle color scheme consists of four colors that form a rectangle on the color wheel.



22.0952, 11.3808, 5.4099



22.0958, 2.4506, 9.7877



22.0958, -11.4404, -4.0399



22.0958, -4.5907, -13.3622

Sweetspot

The Sweet Spot groups the original color and five complimentary colors.



22.0958, 11.3796, 5.4103



38.6555, 2.6111, 3.6670



23.2717, 17.0258, -11.1583



19.0908, 1.6082, 1.9178



71.2094, -3.7996, 3.8689



21.6712, -1.1563, 1.1774

Same Dimension

The Same Dimension uses a secret algorithm to generate beautiful new colors.



22.0958, 11.3796, 5.4103



26.7055, 19.2847, 8.3929



26.6171, 2.3511, 9.4659



15.3239, 0.3428, 1.2216



18.1459, 31.0735, 11.7254



42.4625, 72.7166, 27.4382

Inverse Universe

The Inverse Universe completely reimagines the original color for something new.



30.2166, -10.7952, -1.4370



39.4953, -16.1096, -2.5488



24.5904, -2.5124, -9.3043



16.1878, -1.9622, 0.5113



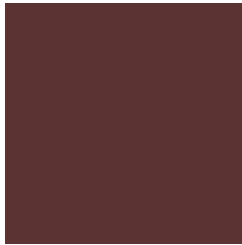
34.9190, -18.5111, -3.6854



81.7135, -43.3175, -8.6247

Previews

White Background



This preview shows how the HunterLab color 22.0952, 11.3808, 5.4099 looks on a white background.

Color Contrast Check

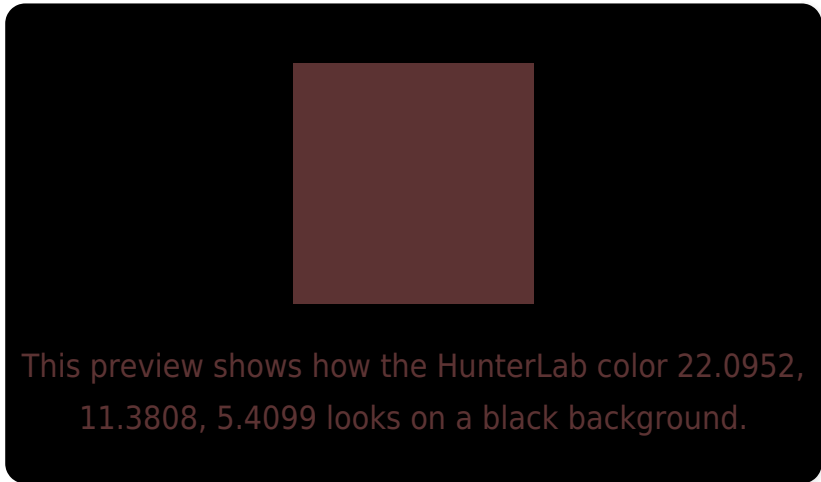
Large Text (above 18pt) WCAG AA ✓ Pass

Any Text WCAG AA ✓ Pass

Large Text (above 18pt) WCAG AAA ✓ Pass

Any Text WCAG AAA ✓ Pass

Black Background



Color Contrast Check

Large Text (above 18pt) WCAG AA × Fail

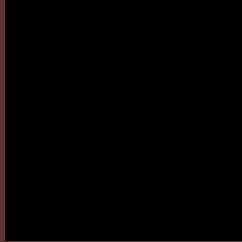
Any Text WCAG AA × Fail

Large Text (above 18pt) WCAG AAA × Fail

Any Text WCAG AAA × Fail

If you want to check with other color combinations, try the [Color Contrast Checker](#).

HunterLab 22.0952, 11.3808, 5.4099 Background



This preview shows how black text looks on a background with the HunterLab color 22.0952, 11.3808, 5.4099.



This preview shows how white text looks on a background with the HunterLab color 22.0952, 11.3808,

Color Blindness Simulation

Color vision deficiency is a very complex topic, and I could not describe the different causes any better than Wikipedia does, so if you want to learn more, you should check out their [article about color blindness](#).

Dichromacy



Original Color

22.0952, 11.3808, 5.4099

Protanopia

22.3801, -1.1778, 3.5150

Deuteranopia

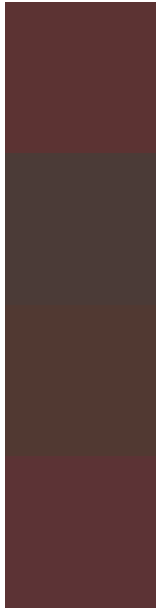
22.1570, 1.4600, 5.9031



Tritanopia

22.1570, 11.6836, 4.5186

Trichromacy



Original Color

22.0952, 11.3808, 5.4099

Protanomaly

22.1351, 2.8358, 4.0077

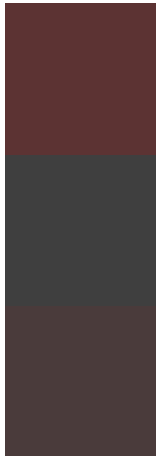
Deuteranomaly

22.1492, 5.0168, 5.6584

Tritanomaly

22.1360, 11.5807, 4.8214

Monochromacy



Original Color

22.0952, 11.3808, 5.4099

Achromatopsia

22.2950, -1.1896, 1.2113

Achromatomaly

22.1349, 3.0156, 2.6092

CSS Examples

Text

The CSS property to change the color of the text to HunterLab 22.0952, 11.3808, 5.4099 is called "color". The color property can be set on classes, ids or directly on the HTML element.

This example shows how text in the color `rgb(92, 51, 51)` looks like.

```
.text, #text, p{  
    color:rgb(92, 51, 51)  
}
```

If you want to add a text shadow in that color use the text-shadow property, you can generate a text shadow directly with our [CSS Text Shadow Generator](#).

Here you see how black text with a 4 pixel rgb(92, 51, 51) colored shadow looks like.

```
.shadow{ text-shadow: 4px 4px 2px rgb(92, 51, 51) }
```

Border

The CSS property to change the border of an element to HunterLab 22.0952, 11.3808, 5.4099 is called "border". The border property can be set on classes, ids or directly on the HTML element.

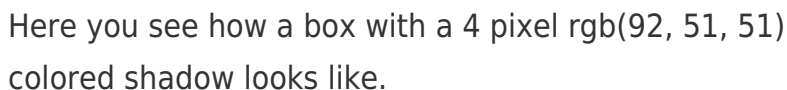
This example shows the color as border, it can be applied via the CSS property "border" or "border-color".

```
.border, #border, table{ border:4px solid rgb(92, 51, 51) }
```


If only the border color should be changed use the property `border-color`.

```
.border{ border-color:rgb(92, 51, 51) }
```

If you want to add a box shadow in that color use:



Here you see how a box with a 4 pixel `rgb(92, 51, 51)` colored shadow looks like.

```
.boxshadow{ -moz-box-shadow:4px 4px 4px  
4px rgb(92, 51, 51); -webkit-box-  
shadow:4px 4px 4px 4px rgb(92, 51, 51);  
box-shadow:4px 4px 4px 4px rgb(92, 51, 51)  
}
```

Background

The CSS property to change the background color of an element to HunterLab 22.0952, 11.3808, 5.4099 is called "background". The background property can be set on classes, ids or directly on the HTML element.

```
.background, #background, body{  
background: rgb(92, 51, 51) }
```

If only the background color should be changed can be used:

```
.background{ background-color: rgb(92, 51,  
51) }
```

This example shows the color as background, it is applied via the CSS property "background".

To optimize and compress your CSS code, you can use our [online CSS compressor and optimizer](#) based on csstidy. If you want to create a linear or radial gradient as background or border, check our [CSS Gradient Generator](#).

Hey! You found this booklet interesting? Support Converting Colors with the new Membership Option!

The pro membership hides all ads, plus gives you double the colors in the color bucket, and more awesome pro features!

[Learn more, Memberships starting at \\$2.50/m!](#)

**Follow me
on Twitter!**

@ConvertingColor