

Converting Colors

HunterLab(22.1714, 1.5875,
4.1213)

Have a look what the booklet for
HunterLab(22.1714, 1.5875, 4.1213)
contains.

HunterLab(22.1901, 1.8150, 4.0478)	3
<i>Conversions</i>	4
<i>Details</i>	6
<i>Harmonies</i>	12
<i>Previews</i>	24
<i>Color Blindness Simulation</i>	28
<i>CSS Examples</i>	31

Color

**HunterLab(22.1901, 1.8150,
4.0478)**

Conversions

Conversions Part 1

Format	Color
Hex	493C37
RGB	73, 60, 55
RGB Percent	29%, 24%, 22%
CMY	0.7137, 0.7647, 0.7843
CMYK	0.00, 0.18, 0.25, 0.71
HSL	17°, 14%, 25%
HSV	17°, 25%, 29%
XYZ	5.0531, 4.9240, 4.2985
YIQ	63.3170, 9.3530, 1.2010

Conversions

Conversions Part 2

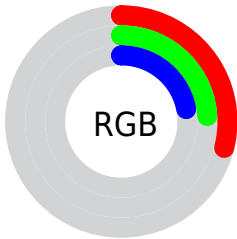
Format	Color
RYB	73, 62, 55
Decimal	4799543
CIELab	26.52, 4.74, 5.21
CIElCh	27, 7.042, 47.661
Yxy	4.9242, 0.3540, 0.3449
Android (android.graphics.Color)	4282989623 (0xFF493C37)
YUV	63.3170, -4.1003, 8.4920
Hunter-Lab	22.1901, 1.8150, 4.0478

Details

The HunterLab color **22.1901, 1.8150, 4.0478** is a dark color, and the websafe version is hex **333333**. A complement of this color would be **23.2967, -3.6450, -1.7505**, and the grayscale version is **22.4170, -1.1961, 1.2180**.

A 20% lighter version of the original color is **39.5124, 1.6980, 5.5147**, and **8.5603, 1.9540, 3.1162** is the 20% darker color. If you saturate the color by 10%, you get **20.8188, 3.2509, 5.0138**, and if you desaturate by 10%, it is **23.6213, 0.4626, 3.0154**.

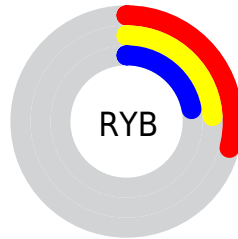
Distribution



Red (29%)

Green (24%)

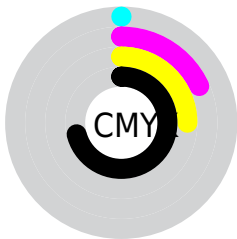
Blue (22%)



Red (29%)

Yellow (24%)

Blue (22%)

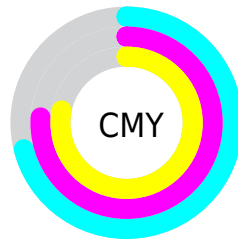


Cyan (0%)

Magenta (18%)

Yellow (25%)

Black (71%)



Cyan (71%)

Magenta (76%)

Yellow (78%)

Brightness & Saturation Gradients

These gradients show how the HunterLab color 22.1901, 1.8150, 4.0478 changes by changing the brightness by 10 percent. The first figure shows a shift by +10% for each color and the second figure -10%.

Similar to the brightness gradients but the following saturation gradients show a change of the HunterLab color 22.1901, 1.8150, 4.0478 by changing the saturation by 10% instead.

■ 22.1901, 1.8150,
4.0478

■ 22.1901, 1.8150,
4.0478

■ 122.1024, -1.3180,
11.9124

■ 14.8421, 1.8512,
3.2367

■ 39.5657, 1.4941,
5.6785

■ 8.4945, 1.9795,
3.0026

■ 49.4288, 1.2358,
6.5125

0.0000, NaN, NaN

0.0000, NaN, NaN

■ 59.9977, 0.9223,
7.3637

0.0000, NaN, NaN

■ 71.2280, 0.5592,
8.2336

0.0000, NaN, NaN

■ 83.0830, 0.1504,
9.1231

0.0000, NaN, NaN

0.0000, NaN, NaN

■ 95.5311, -0.3004,

10.0326

0.0000, NaN, NaN

108.5455, -0.7907,
10.9623

■ 22.1901, 1.8150,
4.0478

■ 22.1901, 1.8150,
4.0478

■ 20.8188, 3.2509,
5.0138

■ 23.6213, 0.4626,
3.0154

■ 19.5131, 4.7766,
5.8987

■ 25.1047, -0.8098,
1.9263

■ 18.2816, 6.3915,
6.6866

■ 26.6356, -2.0098,
0.7896

■ 17.1338, 8.0900,
7.3579

■ 28.2094, -3.1443,
-0.3879

■ 16.0798, 9.8573,
7.8908

■ 29.8222, -4.2199,
-1.6008

■ 15.1307, 11.6661,
8.2631

■ 31.4708, -5.2428,
-2.8446

■ 14.2892, 13.4369,
8.5755

■ 33.1521, -6.2188,
-4.1160

■ 13.8812, 14.3221,
8.8042

■ 34.8638, -7.1530,
-5.4121

■ 36.6037, -8.0499,
-6.7307

Harmonies

Analogous

The Analogous color harmony consists of three colors that are next to each other on the color wheel.



22.1906, 3.1037, 2.4243



22.1901, 1.8150, 4.0478



22.1906, -0.2501, 4.8745

Triad

The Triadic color harmony groups three colors that are evenly spaced from another and form a triangle on the color wheel.



22.1906, 1.8143, 4.0481



22.1906, -5.2680, 2.0722



22.1906, 0.1469, -3.0973

Complementary

The Complementary color scheme is a pair of colors which are on the opposite of each other on the color wheel.



22.1901, 1.8150, 4.0478



23.2967, -3.6450, -1.7505

Split Complementary

Split-complementary colors differ from the complementary color scheme. The scheme consists of three colors, the original color and two neighbors of the complement color.



22.1906, -2.1051, -3.2158



22.1901, 1.8150, 4.0478



22.1906, -5.1713, -0.0816

Square

The Square scheme is like the rectangle color scheme, but the four colors are evenly spaced on the color wheel.



22.1906, 1.8143, 4.0481



22.1906, -4.3031, 3.8126



22.1906, -4.0334, -2.0658



22.1906, 2.1149, -1.7566

Rectangle

The Rectangle color scheme consists of four colors that form a rectangle on the color wheel.



22.1901, 1.8150, 4.0478



22.1906, -1.7609, 4.9225



22.1906, -4.0334, -2.0658



22.1906, -0.6036, -3.2859

Sweetspot

The Sweet Spot groups the original color and five complimentary colors.



22.1906, 1.8143, 4.0481



32.1565, -0.6314, 2.8825



21.3745, 5.7144, -1.9879



16.5904, -0.3150, 1.4980



65.8695, -3.5146, 3.5788



17.3419, -0.9253, 0.9422

Same Dimension

The Same Dimension uses a secret algorithm to generate beautiful new colors.



22.1906, 1.8143, 4.0481



27.7086, 3.5588, 6.0924



24.3393, -1.8682, 6.1602



12.5267, -0.1647, 1.2043



18.6850, 20.8130, 11.8780



44.5922, 55.8371, 28.4550

Inverse Universe

The Inverse Universe completely reimagines the original color for something new.



23.2967, -3.6450, -1.7505



29.5086, -5.3489, -3.3537



21.0757, -0.0194, -4.7461



12.7266, -1.1480, 0.1577



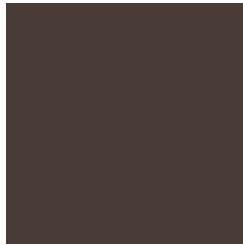
23.4957, -6.3287, -15.7059



56.6165, -13.5950, -41.4180

Previews

White Background



This preview shows how the HunterLab color 22.1901, 1.8150, 4.0478 looks on a white background.

Color Contrast Check

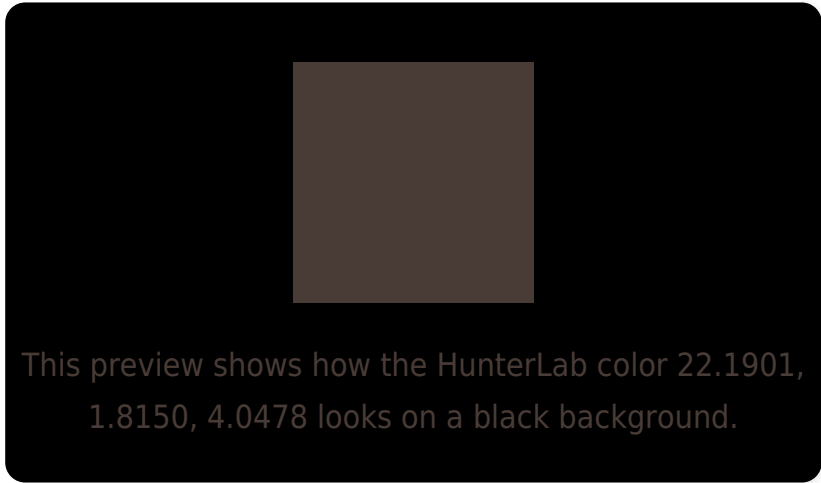
Large Text (above 18pt) WCAG AA ✓ Pass

Any Text WCAG AA ✓ Pass

Large Text (above 18pt) WCAG AAA ✓ Pass

Any Text WCAG AAA ✓ Pass

Black Background



Color Contrast Check

Large Text (above 18pt) WCAG AA × Fail

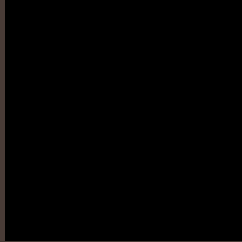
Any Text WCAG AA × Fail

Large Text (above 18pt) WCAG AAA × Fail

Any Text WCAG AAA × Fail

If you want to check with other color combinations, try the [Color Contrast Checker](#).

HunterLab 22.1901, 1.8150, 4.0478 Background



This preview shows how black text looks on a background with the HunterLab color 22.1901, 1.8150, 4.0478.



This preview shows how white text looks on a background with the HunterLab color 22.1901, 1.8150,

Color Blindness Simulation

Color vision deficiency is a very complex topic, and I could not describe the different causes any better than Wikipedia does, so if you want to learn more, you should check out their [article about color blindness](#).

Dichromacy



Original Color

22.1901, 1.8150, 4.0478

Protanopia

22.2808, -1.5680, 3.7460

Deuteranopia

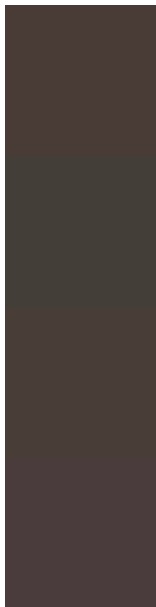
22.3406, 1.0998, 4.1931



Tritanopia

22.2321, 3.5284, 1.2198

Trichromacy



Original Color

22.1901, 1.8150, 4.0478

Protanomaly

22.2704, -0.3377, 3.7564

Deuteranomaly

22.3406, 1.0998, 4.1931

Tritanomaly

22.1586, 3.1406, 2.2704

Monochromacy



Original Color

22.1901, 1.8150, 4.0478

Achromatopsia

22.2950, -1.1896, 1.2113

Achromatomaly

22.2818, -0.1159, 2.3526

CSS Examples

Text

The CSS property to change the color of the text to HunterLab 22.1901, 1.8150, 4.0478 is called "color". The color property can be set on classes, ids or directly on the HTML element.

This example shows how text in the color `rgb(73, 60, 55)` looks like.

```
.text, #text, p{  
    color:rgb(73, 60, 55)  
}
```

If you want to add a text shadow in that color use the text-shadow property, you can generate a text shadow directly with our [CSS Text Shadow Generator](#).

Here you see how black text with a 4 pixel rgb(73, 60, 55) colored shadow looks like.

```
.shadow{ text-shadow: 4px 4px 2px rgb(73, 60, 55) }
```

Border

The CSS property to change the border of an element to HunterLab 22.1901, 1.8150, 4.0478 is called "border". The border property can be set on classes, ids or directly on the HTML element.

This example shows the color as border, it can be applied via the CSS property "border" or "border-color".

```
.border, #border, table{ border:4px solid rgb(73, 60, 55) }
```


If only the border color should be changed use the property border-color.

```
.border{ border-color:rgb(73, 60, 55) }
```

If you want to add a box shadow in that color use:

Here you see how a box with a 4 pixel rgb(73, 60, 55) colored shadow looks like.

```
.boxshadow{ -moz-box-shadow:4px 4px 4px  
4px rgb(73, 60, 55); -webkit-box-  
shadow:4px 4px 4px 4px rgb(73, 60, 55);  
box-shadow:4px 4px 4px 4px rgb(73, 60, 55)  
}
```

Background

The CSS property to change the background color of an element to HunterLab 22.1901, 1.8150, 4.0478 is called "background". The background property can be set on classes, ids or directly on the HTML element.

```
.background, #background, body{  
background: rgb(73, 60, 55) }
```

If only the background color should be changed can be used:

```
.background{ background-color: rgb(73, 60,  
55) }
```

This example shows the color as background, it is applied via the CSS property "background".

To optimize and compress your CSS code, you can use our [online CSS compressor and optimizer](#) based on csstidy. If you want to create a linear or radial gradient as background or border, check our [CSS Gradient Generator](#).

Hey! You found this booklet interesting? Support Converting Colors with the new Membership Option!

The pro membership hides all ads, plus gives you double the colors in the color bucket, and more awesome pro features!

[Learn more, Memberships starting at \\$2.50/m!](#)

**Follow me
on Twitter!**

@ConvertingColor