

Converting Colors

HunterLab(22.2509, 4.9352,
8.9111)

Have a look what the booklet for
HunterLab(22.2509, 4.9352, 8.9111)
contains.

HunterLab(22.2509, 4.9352, 8.9111)	3
<i>Conversions</i>	4
<i>Details</i>	6
<i>Harmonies</i>	12
<i>Previews</i>	24
<i>Color Blindness Simulation</i>	28
<i>CSS Examples</i>	31

Color

**HunterLab(22.2509, 4.9352,
8.9111)**

Conversions

Conversions Part 1

Format	Color
Hex	543926
RGB	84, 57, 38
RGB Percent	33%, 22%, 15%
CMY	0.6706, 0.7765, 0.8510
CMYK	0.00, 0.32, 0.55, 0.67
HSL	25°, 38%, 24%
HSV	25°, 55%, 33%
XYZ	5.4691, 4.9510, 2.5011
YIQ	62.9070, 22.1910, -0.1850

Conversions

Conversions Part 2

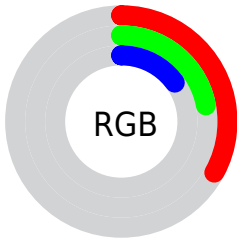
Format	Color
R_{YB}	84, 70, 38
Decimal	5519654
CIE _{Lab}	26.60, 9.43, 16.59
CIE _{LCh}	27, 19.081, 60.373
Yxy	4.9513, 0.4233, 0.3832
Android (android.graphics.Color)	4283709734 (0xFF543926)
YUV	62.9070, -12.2792, 18.4986
Hunter-Lab	22.2509, 4.9352, 8.9111

Details

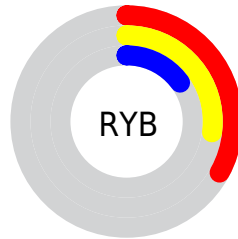
The HunterLab color **22.2509, 4.9352, 8.9111** is a dark color, and the websafe version is hex **663333**. A complement of this color would be **21.9831, -3.6379, -9.1395**, and the grayscale version is **22.2990, -1.1898, 1.2115**.

A 20% lighter version of the original color is **39.5930, 5.1154, 12.2317**, and **8.5730, 4.4395, 5.3604** is the 20% darker color. If you saturate the color by 10%, you get **21.0689, 6.4787, 9.7142**, and if you desaturate by 10%, it is **23.5014, 3.5038, 7.9169**.

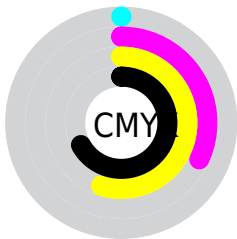
Distribution



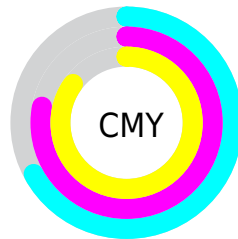
- Red (33%)
- Green (22%)
- Blue (15%)



- Red (33%)
- Yellow (27%)
- Blue (15%)



- Cyan (0%)
- Magenta (32%)
- Yellow (55%)
- Black (67%)



- Cyan (67%)
- Magenta (78%)
- Yellow (85%)

Brightness & Saturation Gradients

These gradients show how the HunterLab color 22.2509, 4.9352, 8.9111 changes by changing the brightness by 10 percent. The first figure shows a shift by +10% for each color and the second figure -10%.

Similar to the brightness gradients but the following saturation gradients show a change of the HunterLab color 22.2509, 4.9352, 8.9111 by changing the saturation by 10% instead.

■ 22.2509, 4.9352,
8.9111

■ 22.2509, 4.9352,
8.9111

■ 122.2098, 3.9089,
22.6085

■ 14.8953, 4.6437,
7.0799

■ 39.6394, 5.1858,
12.2359

■ 8.5449, 4.4106,
5.9815

■ 49.5082, 5.1831,
13.7916

0.0000, NaN, NaN

0.0000, NaN, NaN

■ 60.0824, 5.1099,
15.3062

0.0000, NaN, NaN

■ 71.3178, 4.9740,
16.7928

0.0000, NaN, NaN

■ 83.1774, 4.7816,
18.2605

0.0000, NaN, NaN

0.0000, NaN, NaN

■ 95.6301, 4.5374,

19.7160

0.0000, NaN, NaN

108.6487, 4.2454,
21.1641

22.2509, 4.9352,
8.9111

22.2509, 4.9352,
8.9111

21.0689, 6.4787,
9.7142

23.5014, 3.5038,
7.9169

19.9603, 8.1340,
10.3053

24.8128, 2.1866,
6.7508

18.9325, 9.8894,
10.6678

26.1800, 0.9780,
5.4323

17.9868, 11.6988,
10.8716

27.5981, -0.1281,
3.9785

17.5193, 12.6268,
11.0164

29.0626, -1.1389,
2.4050

■ 30.5697, -2.0617,
0.7251

■ 32.1159, -2.9039,
-1.0497

■ 33.6981, -3.6725,
-2.9092

■ 35.3137, -4.3742,
-4.8450

Harmonies

Analogous

The Analogous color harmony consists of three colors that are next to each other on the color wheel.



22.2514, 9.9040, 6.1614



22.2509, 4.9352, 8.9111



22.2514, -1.2651, 9.7506

Triad

The Triadic color harmony groups three colors that are evenly spaced from another and form a triangle on the color wheel.



22.2514, 4.9341, 8.9114



22.2514, -11.7776, 1.1381



22.2514, 5.0811, -10.7758

Complementary

The Complementary color scheme is a pair of colors which are on the opposite of each other on the color wheel.



22.2509, 4.9352, 8.9111



21.9831, -3.6379, -9.1395

Split Complementary

Split-complementary colors differ from the complementary color scheme. The scheme consists of three colors, the original color and two neighbors of the complement color.



22.2514, -1.1117, -13.1461



22.2509, 4.9352, 8.9111



22.2514, -10.4599, -5.2265

Square

The Square scheme is like the rectangle color scheme, but the four colors are evenly spaced on the color wheel.



22.2514, 4.9341, 8.9114



22.2514, -10.5234, 6.0658



22.2514, -6.7132, -10.8853



22.2514, 9.9951, -5.0652

Rectangle

The Rectangle color scheme consists of four colors that form a rectangle on the color wheel.



22.2509, 4.9352, 8.9111



22.2514, -5.1396, 9.3585



22.2514, -6.7132, -10.8853



22.2514, 3.0592, -12.0491

Sweetspot

The Sweet Spot groups the original color and five complimentary colors.



22.2514, 4.9341, 8.9114



36.1357, 0.0832, 5.6152



19.1304, 16.1694, -3.7123



18.1780, 0.1277, 2.9601



69.0652, -3.6851, 3.7524



19.9203, -1.0629, 1.0823

Same Dimension

The Same Dimension uses a secret algorithm to generate beautiful new colors.



22.2514, 4.9341, 8.9114



27.3188, 9.3179, 13.1479



27.7031, -4.4664, 13.0676



14.1825, -0.3750, 1.5116



21.7200, 16.5898, 13.6742



50.5014, 44.0439, 31.8898

Inverse Universe

The Inverse Universe completely reimagines the original color for something new.



21.9831, -3.6379, -9.1395



26.8668, -4.3678, -15.8558



16.5863, 5.9397, -19.6579



14.1613, -1.0982, 0.0003



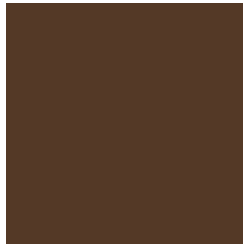
20.9449, -0.7333, -24.5963



48.4682, 1.3733, -63.5455

Previews

White Background



This preview shows how the HunterLab color 22.2509, 4.9352, 8.9111 looks on a white background.

Color Contrast Check

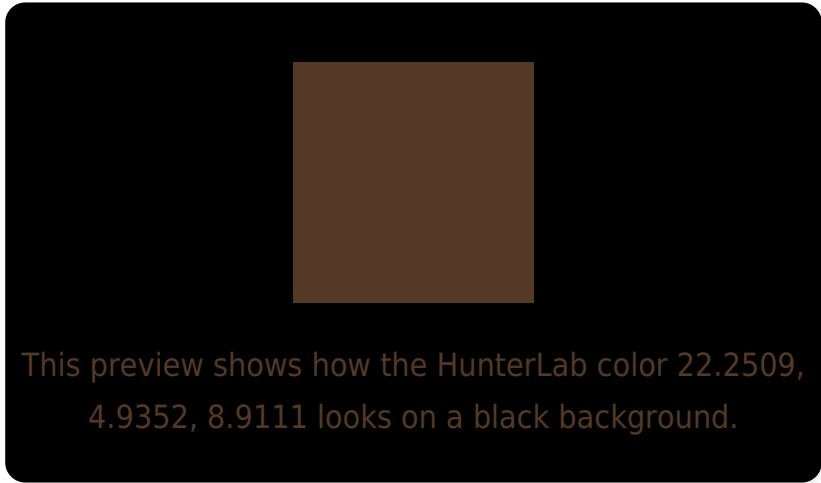
Large Text (above 18pt) WCAG AA ✓ Pass

Any Text WCAG AA ✓ Pass

Large Text (above 18pt) WCAG AAA ✓ Pass

Any Text WCAG AAA ✓ Pass

Black Background



Color Contrast Check

Large Text (above 18pt) WCAG AA × Fail

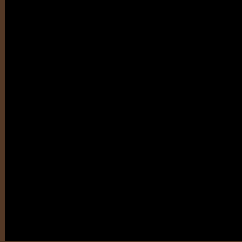
Any Text WCAG AA × Fail

Large Text (above 18pt) WCAG AAA × Fail

Any Text WCAG AAA × Fail

If you want to check with other color combinations, try the [Color Contrast Checker](#).

HunterLab 22.2509, 4.9352, 8.9111 Background



This preview shows how black text looks on a background with the HunterLab color 22.2509, 4.9352, 8.9111.

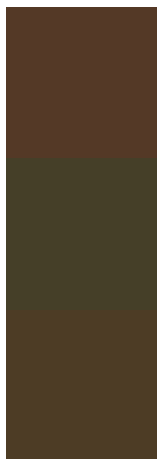


This preview shows how white text looks on a background with the HunterLab color 22.2509, 4.9352,

Color Blindness Simulation

Color vision deficiency is a very complex topic, and I could not describe the different causes any better than Wikipedia does, so if you want to learn more, you should check out their [article about color blindness](#).

Dichromacy



Original Color

22.2509, 4.9352, 8.9111

Protanopia

22.3012, -2.0903, 8.3682

Deuteranopia

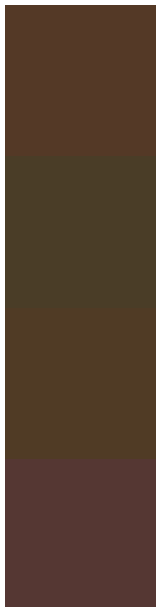
22.2330, 1.3184, 9.0554



Tritanopia

22.2093, 8.9254, 2.7956

Trichromacy



Original Color

22.2509, 4.9352, 8.9111

Protanomaly

22.2257, 0.1288, 8.5772

Deuteranomaly

22.2867, 2.6957, 9.1239

Tritanomaly

22.1420, 7.2835, 5.3848

Monochromacy



Original Color

22.2509, 4.9352, 8.9111

Achromatopsia

22.2950, -1.1896, 1.2113

Achromatomaly

22.2338, 0.6956, 4.4058

CSS Examples

Text

The CSS property to change the color of the text to HunterLab 22.2509, 4.9352, 8.9111 is called "color". The color property can be set on classes, ids or directly on the HTML element.

This example shows how text in the color `rgb(84, 57, 38)` looks like.

```
.text, #text, p{  
    color:rgb(84, 57, 38)  
}
```

If you want to add a text shadow in that color use the text-shadow property, you can generate a text shadow directly with our [CSS Text Shadow Generator](#).

Here you see how black text with a 4 pixel rgb(84, 57, 38) colored shadow looks like.

```
.shadow{ text-shadow: 4px 4px 2px rgb(84, 57, 38) }
```

Border

The CSS property to change the border of an element to HunterLab 22.2509, 4.9352, 8.9111 is called "border".

The border property can be set on classes, ids or directly on the HTML element.

This example shows the color as border, it can be applied via the CSS property "border" or "border-color".

```
.border, #border, table{ border:4px solid rgb(84, 57, 38) }
```


If only the border color should be changed use the property `border-color`.

```
.border{ border-color:rgb(84, 57, 38) }
```

If you want to add a box shadow in that color use:

Here you see how a box with a 4 pixel `rgb(84, 57, 38)` colored shadow looks like.

```
.boxshadow{ -moz-box-shadow:4px 4px 4px  
4px rgb(84, 57, 38); -webkit-box-  
shadow:4px 4px 4px 4px rgb(84, 57, 38);  
box-shadow:4px 4px 4px 4px rgb(84, 57, 38)  
}
```

Background

The CSS property to change the background color of an element to HunterLab 22.2509, 4.9352, 8.9111 is called "background". The background property can be set on classes, ids or directly on the HTML element.

```
.background, #background, body{  
background: rgb(84, 57, 38) }
```

If only the background color should be changed can be used:

```
.background{ background-color: rgb(84, 57,  
38) }
```

This example shows the color as background, it is applied via the CSS property "background".

To optimize and compress your CSS code, you can use our [online CSS compressor and optimizer](#) based on csstidy. If you want to create a linear or radial gradient as background or border, check our [CSS Gradient Generator](#).

Hey! You found this booklet interesting? Support Converting Colors with the new Membership Option!

The pro membership hides all ads, plus gives you double the colors in the color bucket, and more awesome pro features!

[Learn more, Memberships starting at \\$2.50/m!](#)

**Follow me
on Twitter!**

@ConvertingColor