

Converting Colors

HunterLab(22.5692, 7.7853,
-0.5568)

Have a look what the booklet for
HunterLab(22.5692, 7.7853, -0.5568)
contains.

HunterLab(22.4763, 8.0626, -0.8609)	3
<i>Conversions</i>	4
<i>Details</i>	6
<i>Harmonies</i>	12
<i>Previews</i>	24
<i>Color Blindness Simulation</i>	28
<i>CSS Examples</i>	31

Color

**HunterLab(22.4763, 8.0626,
-0.8609)**

Conversions

Conversions Part 1

Format	Color
Hex	523845
RGB	82, 56, 69
RGB Percent	32%, 22%, 27%
CMY	0.6784, 0.7804, 0.7294
CMYK	0.00, 0.32, 0.16, 0.68
HSL	330°, 19%, 27%
HSV	330°, 32%, 32%
XYZ	5.9680, 5.0518, 6.2908
YIQ	65.2560, 11.3230, 9.5550

Conversions

Conversions Part 2

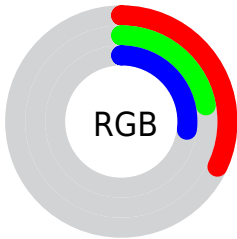
Format	Color
R_{YB}	82, 56, 69
Decimal	5388357
CIE _{Lab}	26.88, 13.89, -3.38
CIE _{LCh}	27, 14.300, 346.319
Yxy	5.0521, 0.3448, 0.2918
Android (android.graphics.Color)	4283578437 (0xFF523845)
YUV	65.2560, 1.8458, 14.6845
Hunter-Lab	22.4763, 8.0626, -0.8609

Details

The HunterLab color **22.4763, 8.0626, -0.8609** is a dark color, and the websafe version is hex **333333**. A complement of this color would be **27.0280, -9.5058, 4.1366**, and the grayscale version is **23.0722, -1.2311, 1.2536**.

A 20% lighter version of the original color is **39.8627, 8.9470, -0.3117**, and **8.7391, 6.5830, -1.1300** is the 20% darker color. If you saturate the color by 10%, you get **20.6690, 11.1534, -1.3707**, and if you desaturate by 10%, it is **24.4251, 4.9810, -0.2055**.

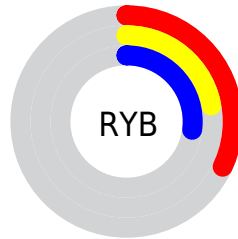
Distribution



Red (32%)

Green (22%)

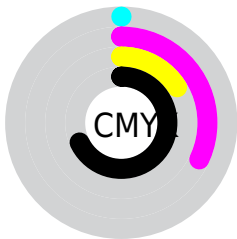
Blue (27%)



Red (32%)

Yellow (22%)

Blue (27%)

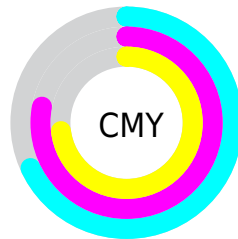


Cyan (0%)

Magenta (32%)

Yellow (16%)

Black (68%)



Cyan (68%)

Magenta (78%)

Yellow (73%)

Brightness & Saturation Gradients

These gradients show how the HunterLab color 22.4763, 8.0626, -0.8609 changes by changing the brightness by 10 percent. The first figure shows a shift by +10% for each color and the second figure -10%.

Similar to the brightness gradients but the following saturation gradients show a change of the HunterLab color 22.4763, 8.0626, -0.8609 by changing the saturation by 10% instead.

■ 22.4763, 8.0626,
-0.8609

■ 22.4763, 8.0626,
-0.8609

■ 122.6070, 8.9598,
3.1163

■ 15.0925, 7.4867,
-1.0284

■ 39.9125, 8.8249,
-0.3150

■ 8.7290, 6.8791,
-1.1556

■ 49.8022, 9.0544,
0.0442

0.0000, INF, NaN

0.0000, NaN, NaN

■ 60.3960, 9.2008,
0.4529

0.0000, NaN, NaN

■ 71.6497, 9.2738,
0.9069

0.0000, NaN, NaN

■ 83.5268, 9.2807,
1.4028

0.0000, NaN, NaN

0.0000, NaN, NaN

■ 95.9961, 9.2275,

1.9379

0.0000, NaN, NaN

109.0307, 9.1192,
2.5097

■ 22.4763, 8.0626,
-0.8609

■ 22.4763, 8.0626,
-0.8609

■ 20.6690, 11.1534,
-1.3707

■ 24.4251, 4.9810,
-0.2055

■ 19.0250, 14.2004,
-1.6989

■ 26.4942, 1.9406,
0.5639

■ 17.5709, 17.1121,
-1.8027

■ 28.6677, -1.0463,
1.4239

■ 16.3342, 19.7555,
-1.6401

■ 30.9322, -3.9764,
2.3565

■ 15.3398, 21.9631,
-1.1810

■ 33.2767, -6.8518,
3.3480

■ 14.5821, 23.6375,
-0.4499

■ 35.6921, -9.6773,
4.3880

■ 13.9783, 25.0834,
0.1555

■ 38.1710, -12.4588,
5.4685

■ 40.7073, -15.2024,
6.5835

■ 43.2957, -17.9139,
7.7282

Harmonies

Analogous

The Analogous color harmony consists of three colors that are next to each other on the color wheel.



22.4768, 5.5651, -5.4028



22.4763, 8.0626, -0.8609



22.4768, 7.9400, 3.4629

Triad

The Triadic color harmony groups three colors that are evenly spaced from another and form a triangle on the color wheel.



22.4768, 8.0618, -0.8604



22.4768, -3.6337, 7.8967



22.4768, -6.9925, -5.7568

Complementary

The Complementary color scheme is a pair of colors which are on the opposite of each other on the color wheel.



22.4763, 8.0626, -0.8609



27.0280, -9.5058, 4.1366

Split Complementary

Split-complementary colors differ from the complementary color scheme. The scheme consists of three colors, the original color and two neighbors of the complement color.



22.4768, -9.0797, -1.2731



22.4763, 8.0626, -0.8609



22.4768, -7.2499, 6.2962

Square

The Square scheme is like the rectangle color scheme, but the four colors are evenly spaced on the color wheel.



22.4768, 8.0618, -0.8604



22.4768, 0.9315, 7.9630



22.4768, -9.1699, 3.1252



22.4768, -3.2559, -8.5908

Rectangle

The Rectangle color scheme consists of four colors that form a rectangle on the color wheel.



22.4763, 8.0626, -0.8609



22.4768, 6.3847, 5.6607



22.4768, -9.1699, 3.1252



22.4768, -7.8966, -4.3562

Sweetspot

The Sweet Spot groups the original color and five complimentary colors.



22.4768, 8.0618, -0.8604



35.3883, 2.0268, 0.8921



21.6864, 6.4269, -8.3489



17.4586, 1.1604, 0.4005



67.9972, -3.6282, 3.6944



19.0543, -1.0167, 1.0353

Same Dimension

The Same Dimension uses a secret algorithm to generate beautiful new colors.



22.4768, 8.0618, -0.8604



27.8561, 13.7761, -1.6719



22.1539, 6.4146, 3.7497



13.8491, 0.5316, 0.4147



17.9624, 32.1550, 0.8015



42.9250, 76.4487, 4.9590

Inverse Universe

The Inverse Universe completely reimagines the original color for something new.



22.4768, 8.0618, -0.8604



27.8561, 13.7761, -1.6719



27.3581, -7.6113, -0.5753



13.8491, 0.5316, 0.4147



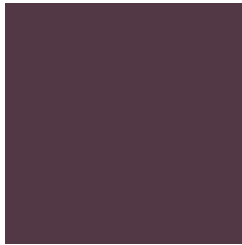
17.9624, 32.1550, 0.8015



42.9250, 76.4487, 4.9590

Previews

White Background



This preview shows how the HunterLab color 22.4763, 8.0626, -0.8609 looks on a white background.

Color Contrast Check

Large Text (above 18pt) WCAG AA ✓ Pass

Any Text WCAG AA ✓ Pass

Large Text (above 18pt) WCAG AAA ✓ Pass

Any Text WCAG AAA ✓ Pass

Black Background



This preview shows how the HunterLab color 22.4763, 8.0626, -0.8609 looks on a black background.

Color Contrast Check

Large Text (above 18pt) WCAG AA × Fail

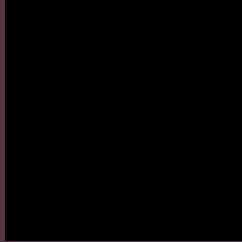
Any Text WCAG AA × Fail

Large Text (above 18pt) WCAG AAA × Fail

Any Text WCAG AAA × Fail

If you want to check with other color combinations, try the [Color Contrast Checker](#).

HunterLab 22.4763, 8.0626, -0.8609 Background



This preview shows how black text looks on a background with the HunterLab color 22.4763, 8.0626, -0.8609.



This preview shows how white text looks on a background with the HunterLab color 22.4763, 8.0626, -0.8609.

-0.8609.

Color Blindness Simulation

Color vision deficiency is a very complex topic, and I could not describe the different causes any better than Wikipedia does, so if you want to learn more, you should check out their [article about color blindness](#).

Dichromacy



Original Color

22.4763, 8.0626, -0.8609

Protanopia

22.5246, 0.2066, -3.1700

Deuteranopia

22.5645, 1.2514, -0.4438



Tritanopia

22.4129, 6.3799, 1.8664

Trichromacy



Original Color

22.4763, 8.0626, -0.8609

Protanomaly

22.2818, 2.9829, -2.5316

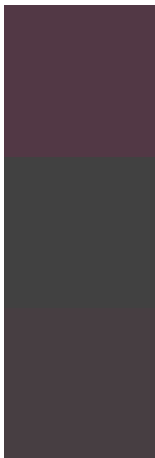
Deuteranomaly

22.5068, 3.4950, -0.4769

Tritanomaly

22.4883, 6.7669, 0.7905

Monochromacy



Original Color

22.4763, 8.0626, -0.8609

Achromatopsia

22.9914, -1.2268, 1.2492

Achromatomaly

22.7556, 1.7875, 0.6238

CSS Examples

Text

The CSS property to change the color of the text to HunterLab 22.4763, 8.0626, -0.8609 is called "color". The color property can be set on classes, ids or directly on the HTML element.

This example shows how text in the color `rgb(82, 56, 69)` looks like.

```
.text, #text, p{  
    color:rgb(82, 56, 69)  
}
```

If you want to add a text shadow in that color use the text-shadow property, you can generate a text shadow directly with our [CSS Text Shadow Generator](#).

Here you see how black text with a 4 pixel rgb(82, 56, 69) colored shadow looks like.

```
.shadow{ text-shadow: 4px 4px 2px rgb(82, 56, 69) }
```

Border

The CSS property to change the border of an element to HunterLab 22.4763, 8.0626, -0.8609 is called "border". The border property can be set on classes, ids or directly on the HTML element.

This example shows the color as border, it can be applied via the CSS property "border" or "border-color".

```
.border, #border, table{ border:4px solid rgb(82, 56, 69) }
```


If only the border color should be changed use the property `border-color`.

```
.border{ border-color:rgb(82, 56, 69) }
```

If you want to add a box shadow in that color use:

Here you see how a box with a 4 pixel `rgb(82, 56, 69)` colored shadow looks like.

```
.boxshadow{ -moz-box-shadow:4px 4px 4px  
4px rgb(82, 56, 69); -webkit-box-  
shadow:4px 4px 4px 4px rgb(82, 56, 69);  
box-shadow:4px 4px 4px 4px rgb(82, 56, 69)  
}
```

Background

The CSS property to change the background color of an element to HunterLab 22.4763, 8.0626, -0.8609 is called "background". The background property can be set on classes, ids or directly on the HTML element.

```
.background, #background, body{  
background: rgb(82, 56, 69) }
```

If only the background color should be changed can be used:

```
.background{ background-color: rgb(82, 56,  
69) }
```

This example shows the color as background, it is applied via the CSS property "background".

To optimize and compress your CSS code, you can use our [online CSS compressor and optimizer](#) based on csstidy. If you want to create a linear or radial gradient as background or border, check our [CSS Gradient Generator](#).

Hey! You found this booklet interesting? Support Converting Colors with the new Membership Option!

The pro membership hides all ads, plus gives you double the colors in the color bucket, and more awesome pro features!

[Learn more, Memberships starting at \\$2.50/m!](#)

**Follow me
on Twitter!**

@ConvertingColor