

Converting Colors

HunterLab(22.6114, 1.6583,
7.1843)

Have a look what the booklet for
HunterLab(22.6114, 1.6583, 7.1843)
contains.

HunterLab(22.6109, 1.6592, 7.1840)	3
<i>Conversions</i>	4
<i>Details</i>	6
<i>Harmonies</i>	12
<i>Previews</i>	24
<i>Color Blindness Simulation</i>	28
<i>CSS Examples</i>	31

Color

**HunterLab(22.6109, 1.6592,
7.1840)**

Conversions

Conversions Part 1

Format	Color
Hex	4D3D2E
RGB	77, 61, 46
RGB Percent	30%, 24%, 18%
CMY	0.6980, 0.7608, 0.8196
CMYK	0.00, 0.21, 0.40, 0.70
HSL	29°, 25%, 24%
HSV	29°, 40%, 30%
XYZ	5.2225, 5.1125, 3.2963
YIQ	64.0740, 14.3510, -1.2730

Conversions

Conversions Part 2

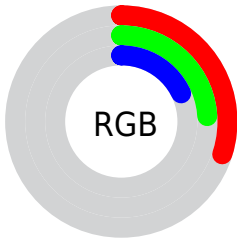
Format	Color
R_{YB}	77, 75, 46
Decimal	5061934
CIE _{Lab}	27.05, 4.51, 11.90
CIE _{LCh}	27, 12.723, 69.234
Y _{xy}	5.1128, 0.3831, 0.3751
Android (android.graphics.Color)	4283252014 (0xFF4D3D2E)
Y _{UV}	64.0740, -8.9105, 11.3361
Hunter-Lab	22.6109, 1.6592, 7.1840

Details

The HunterLab color **22.6109, 1.6592, 7.1840** is a dark color, and the websafe version is hex **333333**. A complement of this color would be **21.3583, -2.3691, -6.3712**, and the grayscale version is **22.6955, -1.2110, 1.2331**.

A 20% lighter version of the original color is **40.0123, 1.5649, 9.6793**, and **8.8830, 1.7375, 5.5041** is the 20% darker color. If you saturate the color by 10%, you get **21.5609, 2.6678, 8.2197**, and if you desaturate by 10%, it is **23.7048, 0.7482, 5.9825**.

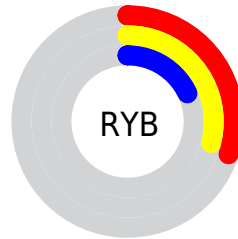
Distribution



Red (30%)

Green (24%)

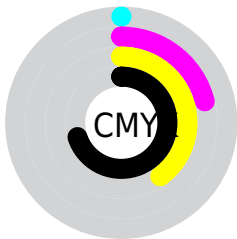
Blue (18%)



Red (30%)

Yellow (29%)

Blue (18%)

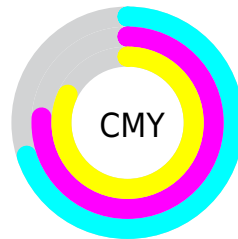


Cyan (0%)

Magenta (21%)

Yellow (40%)

Black (70%)



Cyan (70%)

Magenta (76%)

Yellow (82%)

Brightness & Saturation Gradients

These gradients show how the HunterLab color 22.6109, 1.6592, 7.1840 changes by changing the brightness by 10 percent. The first figure shows a shift by +10% for each color and the second figure -10%.

Similar to the brightness gradients but the following saturation gradients show a change of the HunterLab color 22.6109, 1.6592, 7.1840 by changing the saturation by 10% instead.

■ 22.6109, 1.6592,
7.1840

■ 22.6109, 1.6592,
7.1840

■ 122.8438, -1.6046,
18.3956

■ 15.2105, 1.7172,
5.7829

■ 40.0754, 1.3015,
9.7792

■ 8.8368, 1.7532,
6.0614

■ 49.9777, 1.0271,
11.0261

0.0000, NaN, NaN

■ 60.5830, 0.6988,
12.2579

0.0000, NaN, NaN

■ 71.8477, 0.3217,
13.4825

0.0000, NaN, NaN

■ 83.7352, -0.1002,
14.7052

0.0000, NaN, NaN

■ 96.2144, -0.5636,

0.0000, NaN, NaN

0.0000, NaN, NaN

15.9299

0.0000, NaN, NaN

109.2584, -1.0658,
17.1593

■ 22.6109, 1.6592,
7.1840

■ 22.6109, 1.6592,
7.1840

■ 21.5609, 2.6678,
8.2197

■ 23.7048, 0.7482,
5.9825

■ 20.5568, 3.7798,
9.0734

■ 24.8377, -0.0675,
4.6293

■ 19.6027, 4.9957,
9.7305

■ 26.0072, -0.7943,
3.1387

■ 18.7024, 6.3133,
10.1783

■ 27.2106, -1.4380,
1.5235

■ 17.8587, 7.7204,
10.4245

■ 28.4455, -2.0046,
-0.2047

■ 17.0802, 9.0944,
10.6839

■ 29.7095, -2.4999,
-2.0353

■ 31.0008, -2.9295,
-3.9591

■ 32.3176, -3.2986,
-5.9681

■ 33.6581, -3.6119,
-8.0548

Harmonies

Analogous

The Analogous color harmony consists of three colors that are next to each other on the color wheel.



22.6114, 5.2341, 5.4821



22.6109, 1.6592, 7.1840



22.6114, -2.4600, 7.4566

Triad

The Triadic color harmony groups three colors that are evenly spaced from another and form a triangle on the color wheel.



22.6114, 1.6583, 7.1843



22.6114, -8.4806, -0.0071



22.6114, 4.0023, -5.3889

Complementary

The Complementary color scheme is a pair of colors which are on the opposite of each other on the color wheel.



22.6109, 1.6592, 7.1840



21.3583, -2.3691, -6.3712

Split Complementary

Split-complementary colors differ from the complementary color scheme. The scheme consists of three colors, the original color and two neighbors of the complement color.



22.6114, 0.0724, -7.5017



22.6109, 1.6592, 7.1840



22.6114, -7.0004, -4.0498

Square

The Square scheme is like the rectangle color scheme, but the four colors are evenly spaced on the color wheel.



22.6114, 1.6583, 7.1843



22.6114, -8.1225, 3.7335



22.6114, -3.9377, -6.9722



22.6114, 6.6530, -1.5954

Rectangle

The Rectangle color scheme consists of four colors that form a rectangle on the color wheel.



22.6109, 1.6592, 7.1840



22.6114, -4.9335, 6.8498



22.6114, -3.9377, -6.9722



22.6114, 2.7762, -6.3474

Sweetspot

The Sweet Spot groups the original color and five complimentary colors.



22.6114, 1.6583, 7.1843



33.5478, -0.8384, 4.5256



19.6972, 10.0030, -1.4131



17.1550, -0.4040, 2.3758



66.9319, -3.5713, 3.6365



18.1947, -0.9708, 0.9886

Same Dimension

The Same Dimension uses a secret algorithm to generate beautiful new colors.



22.6114, 1.6583, 7.1843



28.1612, 3.4027, 10.6433



26.4779, -4.7306, 10.4447



13.4660, -0.4643, 1.4838



22.4760, 13.0269, 14.0777



53.0309, 35.6547, 33.3016

Inverse Universe

The Inverse Universe completely reimagines the original color for something new.



21.3583, -2.3691, -6.3712



26.1708, -2.9399, -10.9243



17.6390, 4.1824, -12.6580



13.3227, -0.9304, -0.0619



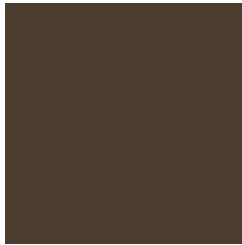
18.6353, 2.3979, -28.4689



43.2959, 9.7508, -75.1653

Previews

White Background



This preview shows how the HunterLab color 22.6109, 1.6592, 7.1840 looks on a white background.

Color Contrast Check

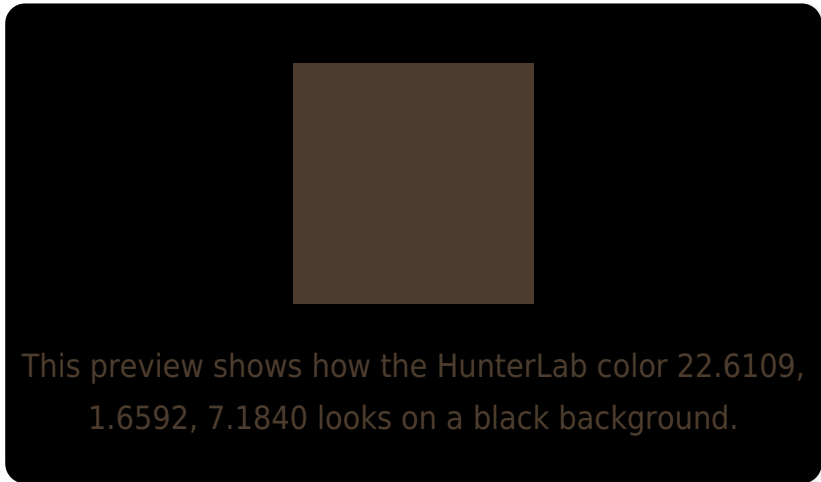
Large Text (above 18pt) WCAG AA ✓ Pass

Any Text WCAG AA ✓ Pass

Large Text (above 18pt) WCAG AAA ✓ Pass

Any Text WCAG AAA ✓ Pass

Black Background



Color Contrast Check

Large Text (above 18pt) WCAG AA × Fail

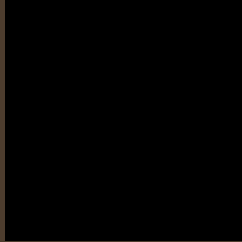
Any Text WCAG AA × Fail

Large Text (above 18pt) WCAG AAA × Fail

Any Text WCAG AAA × Fail

If you want to check with other color combinations, try the [Color Contrast Checker](#).

HunterLab 22.6109, 1.6592, 7.1840 Background



This preview shows how black text looks on a background with the HunterLab color 22.6109, 1.6592, 7.1840.



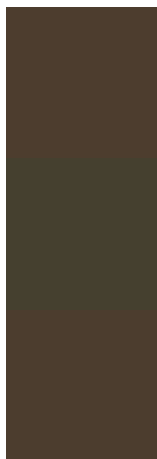
This preview shows how white text looks on a background with the HunterLab color 22.6109, 1.6592,

7.1840.

Color Blindness Simulation

Color vision deficiency is a very complex topic, and I could not describe the different causes any better than Wikipedia does, so if you want to learn more, you should check out their [article about color blindness](#).

Dichromacy



Original Color

22.6109, 1.6592, 7.1840

Protanopia

22.6655, -1.8568, 6.8989

Deuteranopia

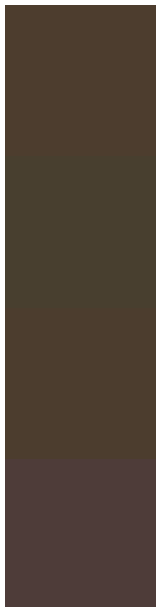
22.5194, 1.3520, 7.0948



Tritanopia

22.6916, 5.0148, 1.7829

Trichromacy



Original Color

22.6109, 1.6592, 7.1840

Protanomaly

22.6671, -0.5838, 6.9227

Deuteranomaly

22.5194, 1.3520, 7.0948

Tritanomaly

22.6866, 3.5434, 3.9251

Monochromacy



Original Color

22.6109, 1.6592, 7.1840

Achromatopsia

22.6428, -1.2082, 1.2302

Achromatomaly

22.6178, -0.3556, 3.7836

CSS Examples

Text

The CSS property to change the color of the text to HunterLab 22.6109, 1.6592, 7.1840 is called "color". The color property can be set on classes, ids or directly on the HTML element.

This example shows how text in the color `rgb(77, 61, 46)` looks like.

```
.text, #text, p{  
    color:rgb(77, 61, 46)  
}
```

If you want to add a text shadow in that color use the text-shadow property, you can generate a text shadow directly with our [CSS Text Shadow Generator](#).

Here you see how black text with a 4 pixel rgb(77, 61, 46) colored shadow looks like.

```
.shadow{ text-shadow: 4px 4px 2px rgb(77, 61, 46) }
```

Border

The CSS property to change the border of an element to HunterLab 22.6109, 1.6592, 7.1840 is called "border".

The border property can be set on classes, ids or directly on the HTML element.

This example shows the color as border, it can be applied via the CSS property "border" or "border-color".

```
.border, #border, table{ border:4px solid rgb(77, 61, 46) }
```


If only the border color should be changed use the property `border-color`.

```
.border{ border-color:rgb(77, 61, 46) }
```

If you want to add a box shadow in that color use:

Here you see how a box with a 4 pixel `rgb(77, 61, 46)` colored shadow looks like.

```
.boxshadow{ -moz-box-shadow:4px 4px 4px  
4px rgb(77, 61, 46); -webkit-box-  
shadow:4px 4px 4px 4px rgb(77, 61, 46);  
box-shadow:4px 4px 4px 4px rgb(77, 61, 46)  
}
```

Background

The CSS property to change the background color of an element to HunterLab 22.6109, 1.6592, 7.1840 is called "background". The background property can be set on classes, ids or directly on the HTML element.

```
.background, #background, body{  
background: rgb(77, 61, 46) }
```

If only the background color should be changed can be used:

```
.background{ background-color: rgb(77, 61,  
46) }
```

This example shows the color as background, it is applied via the CSS property "background".

To optimize and compress your CSS code, you can use our [online CSS compressor and optimizer](#) based on csstidy. If you want to create a linear or radial gradient as background or border, check our [CSS Gradient Generator](#).

Hey! You found this booklet interesting? Support Converting Colors with the new Membership Option!

The pro membership hides all ads, plus gives you double the colors in the color bucket, and more awesome pro features!

[Learn more, Memberships starting at \\$2.50/m!](#)

**Follow me
on Twitter!**

@ConvertingColor