

Converting Colors

HunterLab(22.6559, 3.0733,
8.2322)

Have a look what the booklet for
HunterLab(22.6559, 3.0733, 8.2322)
contains.

HunterLab(22.6897, 2.9883, 8.3097)	3
<i>Conversions</i>	4
<i>Details</i>	6
<i>Harmonies</i>	12
<i>Previews</i>	24
<i>Color Blindness Simulation</i>	28
<i>CSS Examples</i>	31

Color

**HunterLab(22.6897, 2.9883,
8.3097)**

Conversions

Conversions Part 1

Format	Color
Hex	513C2A
RGB	81, 60, 42
RGB Percent	32%, 24%, 16%
CMY	0.6824, 0.7647, 0.8353
CMYK	0.00, 0.26, 0.48, 0.68
HSL	28°, 32%, 24%
HSV	28°, 48%, 32%
XYZ	5.4271, 5.1482, 2.8981
YIQ	64.2270, 18.2940, -1.1460

Conversions

Conversions Part 2

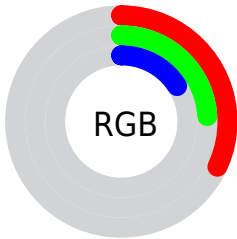
Format	Color
RYB	81, 75, 42
Decimal	5323818
CIELab	27.15, 6.53, 14.69
CIElCh	27, 16.074, 66.025
Yxy	5.1485, 0.4028, 0.3821
Android (android.graphics.Color)	4283513898 (0xFF513C2A)
YUV	64.2270, -10.9579, 14.7099
Hunter-Lab	22.6897, 2.9883, 8.3097

Details

The HunterLab color **22.6897, 2.9883, 8.3097** is a dark color, and the websafe version is hex **663333**. A complement of this color would be **21.5434, -2.7564, -8.1975**, and the grayscale version is **22.7548, -1.2141, 1.2363**.

A 20% lighter version of the original color is **40.1566, 3.2251, 11.1692**, and **8.9871, 3.0193, 5.5907** is the 20% darker color. If you saturate the color by 10%, you get **21.5823, 4.2253, 9.2360**, and if you desaturate by 10%, it is **23.8504, 1.8585, 7.1992**.

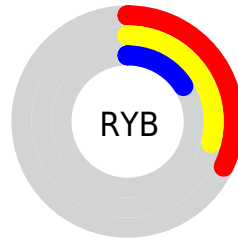
Distribution



Red (32%)

Green (24%)

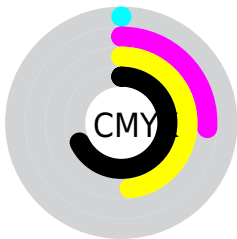
Blue (16%)



Red (32%)

Yellow (29%)

Blue (16%)

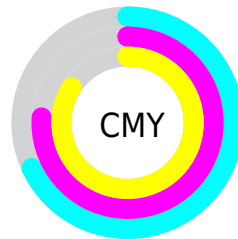


Cyan (0%)

Magenta (26%)

Yellow (48%)

Black (68%)



Cyan (68%)

Magenta (76%)

Yellow (84%)

Brightness & Saturation Gradients

These gradients show how the HunterLab color 22.6897, 2.9883, 8.3097 changes by changing the brightness by 10 percent. The first figure shows a shift by +10% for each color and the second figure -10%.

Similar to the brightness gradients but the following saturation gradients show a change of the HunterLab color 22.6897, 2.9883, 8.3097 by changing the saturation by 10% instead.

■ 22.6897, 2.9883,
8.3097

■ 22.6897, 2.9883,
8.3097

■ 122.9823, 0.6360,
20.9778

■ 15.2795, 2.9032,
6.6488

■ 40.1708, 2.8788,
11.3287

■ 8.8992, 2.7624,
6.2294

■ 50.0803, 2.7151,
12.7561

0.0000, NaN, NaN

0.0000, NaN, NaN

■ 60.6925, 2.4907,
14.1537

0.0000, NaN, NaN

■ 71.9636, 2.2118,
15.5322

0.0000, NaN, NaN

■ 83.8571, 1.8833,
16.8992

0.0000, NaN, NaN

0.0000, NaN, NaN

■ 96.3420, 1.5091,

18.2599

0.0000, NaN, NaN

109.3916, 1.0925,
19.6185

22.6897, 2.9883,
8.3097

22.6897, 2.9883,
8.3097

21.5823, 4.2253,
9.2360

23.8504, 1.8585,
7.1992

20.5310, 5.5738,
9.9601

25.0586, 0.8350,
5.9208

19.5412, 7.0305,
10.4667

26.3108, -0.0887,
4.4912

18.6176, 8.5872,
10.7444

27.6038, -0.9188,
2.9255

17.7524, 10.1688,
10.9730

28.9342, -1.6620,
1.2371

■ 17.5977, 10.4578,
11.0267

■ 30.2992, -2.3247,
-0.5619

■ 31.6963, -2.9135,
-2.4606

■ 33.1233, -3.4342,
-4.4498

■ 34.5781, -3.8927,
-6.5213

Harmonies

Analogous

The Analogous color harmony consists of three colors that are next to each other on the color wheel.



22.6902, 7.4367, 6.1393



22.6897, 2.9883, 8.3097



22.6902, -2.2500, 8.7932

Triad

The Triadic color harmony groups three colors that are evenly spaced from another and form a triangle on the color wheel.



22.6902, 2.9873, 8.3100



22.6902, -10.3082, 0.2158



22.6902, 4.9611, -7.8626

Complementary

The Complementary color scheme is a pair of colors which are on the opposite of each other on the color wheel.



22.6897, 2.9883, 8.3097



21.5434, -2.7564, -8.1975

Split Complementary

Split-complementary colors differ from the complementary color scheme. The scheme consists of three colors, the original color and two neighbors of the complement color.



22.6902, -0.1548, -10.3798



22.6897, 2.9883, 8.3097



22.6902, -8.7323, -5.0880

Square

The Square scheme is like the rectangle color scheme, but the four colors are evenly spaced on the color wheel.



22.6902, 2.9873, 8.3100



22.6902, -9.6298, 4.7640



22.6902, -5.1264, -9.2645



22.6902, 8.6460, -2.9710

Rectangle

The Rectangle color scheme consists of four colors that form a rectangle on the color wheel.



22.6897, 2.9883, 8.3097



22.6902, -5.4269, 8.2171



22.6902, -5.1264, -9.2645



22.6902, 3.3351, -9.0592

Sweetspot

The Sweet Spot groups the original color and five complimentary colors.



22.6902, 2.9873, 8.3100



34.9302, -0.5264, 5.1290



19.4145, 13.2013, -2.3694



17.6761, -0.1936, 2.7474



67.9972, -3.6282, 3.6944



19.0543, -1.0167, 1.0353

Same Dimension

The Same Dimension uses a secret algorithm to generate beautiful new colors.



22.6902, 2.9873, 8.3100



27.8913, 5.8252, 12.2417



27.4148, -4.9319, 12.0690



14.2276, -0.4512, 1.5610



22.6081, 14.4449, 14.1839



52.6335, 38.6773, 33.1097

Inverse Universe

The Inverse Universe completely reimagines the original color for something new.



21.5434, -2.7564, -8.1975



26.0587, -3.2373, -14.1321



16.9824, 5.3758, -16.6195



14.1154, -1.0228, -0.0551



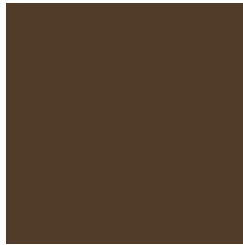
19.6655, 1.4846, -27.7849



45.2555, 7.1760, -72.0564

Previews

White Background



This preview shows how the HunterLab color 22.6897, 2.9883, 8.3097 looks on a white background.

Color Contrast Check

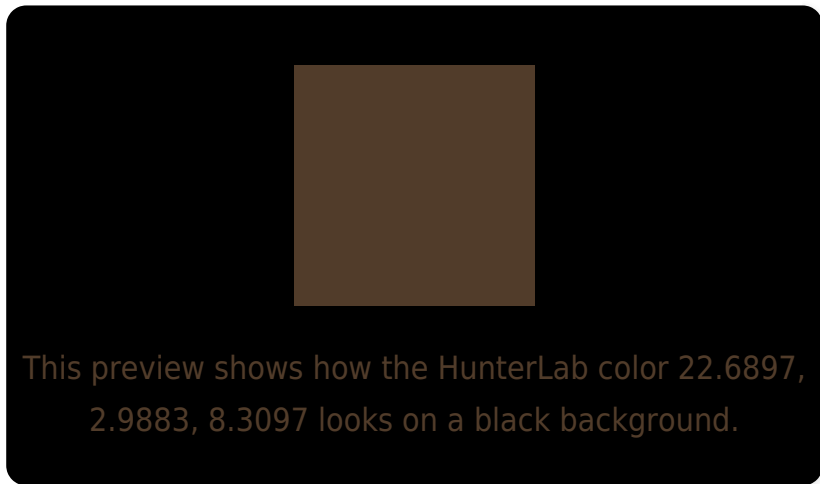
Large Text (above 18pt) WCAG AA ✓ Pass

Any Text WCAG AA ✓ Pass

Large Text (above 18pt) WCAG AAA ✓ Pass

Any Text WCAG AAA ✓ Pass

Black Background



Color Contrast Check

Large Text (above 18pt) WCAG AA × Fail

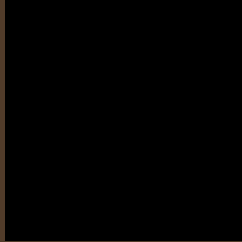
Any Text WCAG AA × Fail

Large Text (above 18pt) WCAG AAA × Fail

Any Text WCAG AAA × Fail

If you want to check with other color combinations, try the [Color Contrast Checker](#).

HunterLab 22.6897, 2.9883, 8.3097 Background



This preview shows how black text looks on a background with the HunterLab color 22.6897, 2.9883, 8.3097.

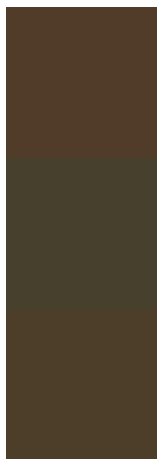


This preview shows how white text looks on a background with the HunterLab color 22.6897, 2.9883,

Color Blindness Simulation

Color vision deficiency is a very complex topic, and I could not describe the different causes any better than Wikipedia does, so if you want to learn more, you should check out their [article about color blindness](#).

Dichromacy



Original Color

22.6897, 2.9883, 8.3097

Protanopia

22.6952, -1.8556, 7.7271

Deuteranopia

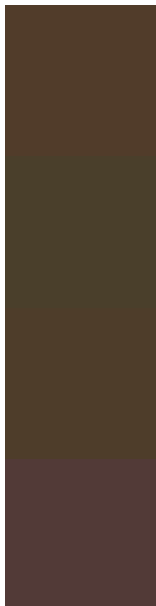
22.7820, 0.8829, 8.3529



Tritanopia

22.6121, 7.0028, 2.1062

Trichromacy



Original Color

22.6897, 2.9883, 8.3097

Protanomaly

22.7712, -0.3607, 8.0744

Deuteranomaly

22.6370, 1.6139, 8.2399

Tritanomaly

22.5738, 5.4280, 4.5117

Monochromacy



Original Color

22.6897, 2.9883, 8.3097

Achromatopsia

22.6428, -1.2082, 1.2302

Achromatomaly

22.6774, -0.1943, 4.1884

CSS Examples

Text

The CSS property to change the color of the text to HunterLab 22.6897, 2.9883, 8.3097 is called "color". The color property can be set on classes, ids or directly on the HTML element.

This example shows how text in the color `rgb(81, 60, 42)` looks like.

```
.text, #text, p{  
    color:rgb(81, 60, 42)  
}
```

If you want to add a text shadow in that color use the text-shadow property, you can generate a text shadow directly with our [CSS Text Shadow Generator](#).

Here you see how black text with a 4 pixel rgb(81, 60, 42) colored shadow looks like.

```
.shadow{ text-shadow: 4px 4px 2px rgb(81, 60, 42) }
```

Border

The CSS property to change the border of an element to HunterLab 22.6897, 2.9883, 8.3097 is called "border".

The border property can be set on classes, ids or directly on the HTML element.

This example shows the color as border, it can be applied via the CSS property "border" or "border-color".

```
.border, #border, table{ border:4px solid rgb(81, 60, 42) }
```


If only the border color should be changed use the property `border-color`.

```
.border{ border-color:rgb(81, 60, 42) }
```

If you want to add a box shadow in that color use:

Here you see how a box with a 4 pixel `rgb(81, 60, 42)` colored shadow looks like.

```
.boxshadow{ -moz-box-shadow:4px 4px 4px  
4px rgb(81, 60, 42); -webkit-box-  
shadow:4px 4px 4px 4px rgb(81, 60, 42);  
box-shadow:4px 4px 4px 4px rgb(81, 60, 42)  
}
```

Background

The CSS property to change the background color of an element to HunterLab 22.6897, 2.9883, 8.3097 is called "background". The background property can be set on classes, ids or directly on the HTML element.

```
.background, #background, body{  
background: rgb(81, 60, 42) }
```

If only the background color should be changed can be used:

```
.background{ background-color: rgb(81, 60,  
42) }
```

This example shows the color as background, it is applied via the CSS property "background".

To optimize and compress your CSS code, you can use our [online CSS compressor and optimizer](#) based on csstidy. If you want to create a linear or radial gradient as background or border, check our [CSS Gradient Generator](#).

Hey! You found this booklet interesting? Support Converting Colors with the new Membership Option!

The pro membership hides all ads, plus gives you double the colors in the color bucket, and more awesome pro features!

[Learn more, Memberships starting at \\$2.50/m!](#)

**Follow me
on Twitter!**

@ConvertingColor