

Converting Colors

HunterLab(23.0499, 0.7401,
4.9187)

Have a look what the booklet for
HunterLab(23.0499, 0.7401, 4.9187)
contains.

HunterLab(22.9928, 0.8392, 4.8625)	3
<i>Conversions</i>	4
<i>Details</i>	6
<i>Harmonies</i>	12
<i>Previews</i>	24
<i>Color Blindness Simulation</i>	28
<i>CSS Examples</i>	31

Color

**HunterLab(22.9928, 0.8392,
4.8625)**

Conversions

Conversions Part 1

Format	Color
Hex	4A3F37
RGB	74, 63, 55
RGB Percent	29%, 25%, 22%
CMY	0.7098, 0.7529, 0.7843
CMYK	0.00, 0.15, 0.26, 0.71
HSL	25°, 15%, 25%
HSV	25°, 26%, 29%
XYZ	5.2911, 5.2867, 4.3560
YIQ	65.3770, 9.1240, -0.1560

Conversions

Conversions Part 2

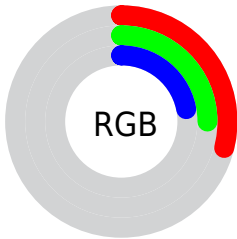
Format	Color
R_YB	74, 69, 55
Decimal	4865847
CIE Lab	27.54, 3.26, 6.66
CIE LCh	28, 7.414, 63.943
Yxy	5.2869, 0.3543, 0.3540
Android (android.graphics.Color)	4283055927 (0xFF4A3F37)
YUV	65.3770, -5.1159, 7.5624
Hunter-Lab	22.9928, 0.8392, 4.8625

Details

The HunterLab color **22.9928, 0.8392, 4.8625** is a dark color, and the websafe version is hex **333333**. A complement of this color would be **22.8099, -2.6697, -2.8313**, and the grayscale version is **23.1386, -1.2346, 1.2572**.

A 20% lighter version of the original color is **40.6683, 0.1591, 6.7362**, and **9.1461, 0.8564, 3.5984** is the 20% darker color. If you saturate the color by 10%, you get **21.8290, 1.8584, 6.0052**, and if you desaturate by 10%, it is **24.2000, -0.0946, 3.6029**.

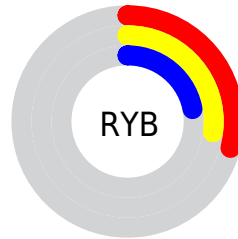
Distribution



Red (29%)

Green (25%)

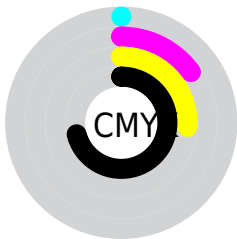
Blue (22%)



Red (29%)

Yellow (27%)

Blue (22%)

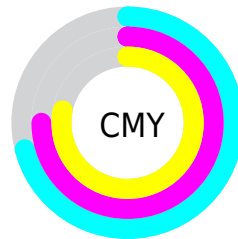


Cyan (0%)

Magenta (15%)

Yellow (26%)

Black (71%)



Cyan (71%)

Magenta (75%)

Yellow (78%)

Brightness & Saturation Gradients

These gradients show how the HunterLab color 22.9928, 0.8392, 4.8625 changes by changing the brightness by 10 percent. The first figure shows a shift by +10% for each color and the second figure -10%.

Similar to the brightness gradients but the following saturation gradients show a change of the HunterLab color 22.9928, 0.8392, 4.8625 by changing the saturation by 10% instead.

■ 22.9928, 0.8392,
4.8625

■ 22.9928, 0.8392,
4.8625

■ 123.5139, -3.0197,
13.4454

■ 15.5454, 0.9928,
3.9301

■ 40.5372, 0.3178,
6.6958

■ 9.1345, 1.0730,
3.5198

■ 50.4745, -0.0290,
7.6179

0.0000, NaN, NaN

0.0000, NaN, NaN

■ 61.1127, -0.4251,
8.5509

0.0000, NaN, NaN

■ 72.4083, -0.8662,
9.4974

0.0000, NaN, NaN

■ 84.3251, -1.3488,
10.4592

0.0000, NaN, NaN

0.0000, NaN, NaN

■ 96.8321, -1.8701,

109.9028, -2.4277,
12.4326

■ 22.9928, 0.8392,
4.8625

■ 22.9928, 0.8392,
4.8625

■ 21.8290, 1.8584,
6.0052

■ 24.2000, -0.0946,
3.6029

■ 20.7109, 2.9705,
7.0158

■ 25.4455, -0.9465,
2.2384

■ 19.6436, 4.1782,
7.8787

■ 26.7266, -1.7235,
0.7805

■ 18.6319, 5.4830,
8.5776

■ 28.0405, -2.4315,
-0.7609

■ 17.6808, 6.8823,
9.0963

■ 29.3846, -3.0763,
-2.3773

■ 16.7959, 8.3683,
9.4208

■ 30.7569, -3.6635,
-4.0612

■ 15.9735, 9.8831,
9.6747

■ 32.1552, -4.1981,
-5.8063

■ 15.6347, 10.5244,
9.8183

■ 33.5779, -4.6846,
-7.6071

■ 35.0234, -5.1274,
-9.4589

Harmonies

Analogous

The Analogous color harmony consists of three colors that are next to each other on the color wheel.



22.9933, 2.7349, 3.5747



22.9928, 0.8392, 4.8625



22.9933, -1.5452, 5.2215

Triad

The Triadic color harmony groups three colors that are evenly spaced from another and form a triangle on the color wheel.



22.9933, 0.8384, 4.8628



22.9933, -5.6616, 0.9470



22.9933, 1.4111, -2.7046

Complementary

The Complementary color scheme is a pair of colors which are on the opposite of each other on the color wheel.



22.9928, 0.8392, 4.8625



22.8099, -2.6697, -2.8313

Split Complementary

Split-complementary colors differ from the complementary color scheme. The scheme consists of three colors, the original color and two neighbors of the complement color.



22.9933, -0.9092, -3.5832



22.9928, 0.8392, 4.8625



22.9933, -4.9397, -1.3424

Square

The Square scheme is like the rectangle color scheme, but the four colors are evenly spaced on the color wheel.



22.9933, 0.8384, 4.8628



22.9933, -5.2363, 3.1011



22.9933, -3.2241, -3.0609



22.9933, 3.0750, -0.7656

Rectangle

The Rectangle color scheme consists of four colors that form a rectangle on the color wheel.



22.9928, 0.8392, 4.8625



22.9933, -3.0747, 4.9197



22.9933, -3.2241, -3.0609



22.9933, 0.6787, -3.1423

Sweetspot

The Sweet Spot groups the original color and five complimentary colors.



22.9933, 0.8384, 4.8628



33.1446, -0.9626, 3.4418



21.4070, 5.6980, -1.0207



16.5671, -0.4328, 1.8118



65.8695, -3.5146, 3.5788



17.3419, -0.9253, 0.9422

Same Dimension

The Same Dimension uses a secret algorithm to generate beautiful new colors.



22.9933, 0.8384, 4.8628



29.3352, 1.9732, 7.4224



25.3387, -3.0753, 7.1022



13.4117, -0.3728, 1.4244



21.3293, 15.7468, 13.4187



50.2252, 42.5927, 31.6942

Inverse Universe

The Inverse Universe completely reimagines the original color for something new.



22.8099, -2.6697, -2.8313



29.0327, -3.7860, -5.2221



20.4742, 1.2600, -6.1228



13.3780, -1.0211, 0.0046



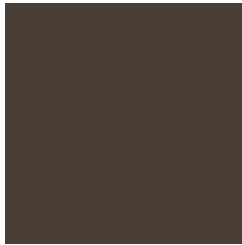
20.2279, -0.4148, -24.3878



47.3481, 2.2642, -64.0687

Previews

White Background



This preview shows how the HunterLab color 22.9928, 0.8392, 4.8625 looks on a white background.

Color Contrast Check

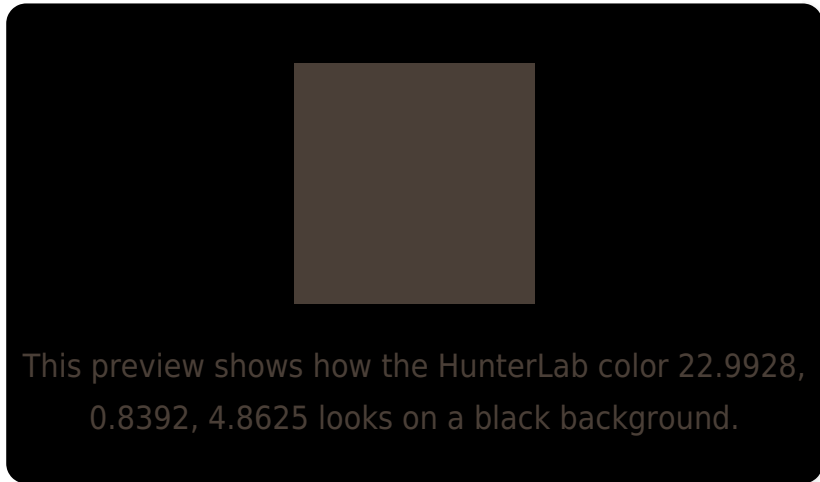
Large Text (above 18pt) WCAG AA ✓ Pass

Any Text WCAG AA ✓ Pass

Large Text (above 18pt) WCAG AAA ✓ Pass

Any Text WCAG AAA ✓ Pass

Black Background



Color Contrast Check

Large Text (above 18pt) WCAG AA × Fail

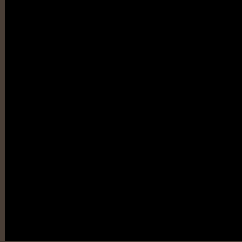
Any Text WCAG AA × Fail

Large Text (above 18pt) WCAG AAA × Fail

Any Text WCAG AAA × Fail

If you want to check with other color combinations, try the [Color Contrast Checker](#).

HunterLab 22.9928, 0.8392, 4.8625 Background



This preview shows how black text looks on a background with the HunterLab color 22.9928, 0.8392, 4.8625.



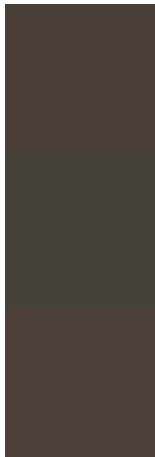
This preview shows how white text looks on a background with the HunterLab color 22.9928, 0.8392,

4.8625.

Color Blindness Simulation

Color vision deficiency is a very complex topic, and I could not describe the different causes any better than Wikipedia does, so if you want to learn more, you should check out their [article about color blindness](#).

Dichromacy



Original Color

22.9928, 0.8392, 4.8625

Protanopia

23.0110, -1.5765, 4.5117

Deuteranopia

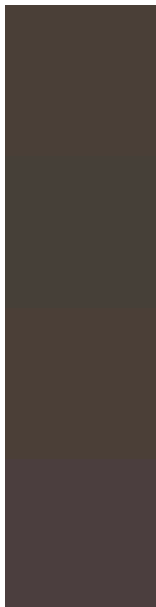
23.0797, 1.1329, 4.9562



Tritanopia

22.8620, 3.3539, 0.7791

Trichromacy



Original Color

22.9928, 0.8392, 4.8625

Protanomaly

22.9225, -0.6104, 4.4368

Deuteranomaly

23.0797, 1.1329, 4.9562

Tritanomaly

22.9976, 2.3951, 2.4635

Monochromacy



Original Color

22.9928, 0.8392, 4.8625

Achromatopsia

22.9914, -1.2268, 1.2492

Achromatomaly

22.8750, -0.5498, 2.6429

CSS Examples

Text

The CSS property to change the color of the text to HunterLab 22.9928, 0.8392, 4.8625 is called "color". The color property can be set on classes, ids or directly on the HTML element.

This example shows how text in the color `rgb(74, 63, 55)` looks like.

```
.text, #text, p{  
    color:rgb(74, 63, 55)  
}
```

If you want to add a text shadow in that color use the text-shadow property, you can generate a text shadow directly with our [CSS Text Shadow Generator](#).

Here you see how black text with a 4 pixel rgb(74, 63, 55) colored shadow looks like.

```
.shadow{ text-shadow: 4px 4px 2px rgb(74, 63, 55) }
```

Border

The CSS property to change the border of an element to HunterLab 22.9928, 0.8392, 4.8625 is called "border". The border property can be set on classes, ids or directly on the HTML element.

This example shows the color as border, it can be applied via the CSS property "border" or "border-color".

```
.border, #border, table{ border:4px solid rgb(74, 63, 55) }
```


If only the border color should be changed use the property `border-color`.

```
.border{ border-color:rgb(74, 63, 55) }
```

If you want to add a box shadow in that color use:

Here you see how a box with a 4 pixel `rgb(74, 63, 55)` colored shadow looks like.

```
.boxshadow{ -moz-box-shadow:4px 4px 4px  
4px rgb(74, 63, 55); -webkit-box-  
shadow:4px 4px 4px 4px rgb(74, 63, 55);  
box-shadow:4px 4px 4px 4px rgb(74, 63, 55)  
}
```

Background

The CSS property to change the background color of an element to HunterLab 22.9928, 0.8392, 4.8625 is called "background". The background property can be set on classes, ids or directly on the HTML element.

```
.background, #background, body{  
background: rgb(74, 63, 55) }
```

If only the background color should be changed can be used:

```
.background{ background-color: rgb(74, 63,  
55) }
```

This example shows the color as background, it is applied via the CSS property "background".

To optimize and compress your CSS code, you can use our [online CSS compressor and optimizer](#) based on csstidy. If you want to create a linear or radial gradient as background or border, check our [CSS Gradient Generator](#).

Hey! You found this booklet interesting? Support Converting Colors with the new Membership Option!

The pro membership hides all ads, plus gives you double the colors in the color bucket, and more awesome pro features!

[Learn more, Memberships starting at \\$2.50/m!](#)

**Follow me
on Twitter!**

@ConvertingColor