

Converting Colors

HunterLab(23.3178, 1.2672,
3.6989)

Have a look what the booklet for
HunterLab(23.3178, 1.2672, 3.6989)
contains.

HunterLab(23.4060, 1.1704, 3.9620)	3
<i>Conversions</i>	4
<i>Details</i>	6
<i>Harmonies</i>	12
<i>Previews</i>	24
<i>Color Blindness Simulation</i>	28
<i>CSS Examples</i>	31

Color

**HunterLab(23.4060, 1.1704,
3.9620)**

Conversions

Conversions Part 1

Format	Color
Hex	4B403B
RGB	75, 64, 59
RGB Percent	29%, 25%, 23%
CMY	0.7059, 0.7490, 0.7686
CMYK	0.00, 0.15, 0.21, 0.71
HSL	19°, 12%, 26%
HSV	19°, 21%, 29%
XYZ	5.5245, 5.4784, 4.9039
YIQ	66.7190, 8.1610, 0.7770

Conversions

Conversions Part 2

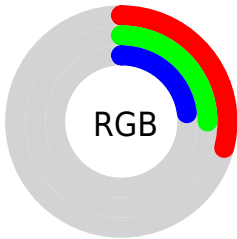
Format	Color
RYB	75, 66, 59
Decimal	4931643
CIELab	28.06, 3.78, 4.80
CIELCh	28, 6.112, 51.779
Yxy	5.4787, 0.3473, 0.3444
Android (android.graphics.Color)	4283121723 (0xFF4B403B)
YUV	66.7190, -3.8055, 7.2624
Hunter-Lab	23.4060, 1.1704, 3.9620

Details

The HunterLab color **23.4060, 1.1704, 3.9620** is a dark color, and the websafe version is hex **333333**. A complement of this color would be **24.1205, -3.2573, -1.5567**, and the grayscale version is **23.6042, -1.2595, 1.2825**.

A 20% lighter version of the original color is **41.1267, 0.5446, 5.6938**, and **9.5163, 1.2253, 2.5813** is the 20% darker color. If you saturate the color by 10%, you get **22.0261, 2.5125, 5.0292**, and if you desaturate by 10%, it is **24.8411, -0.0870, 2.8179**.

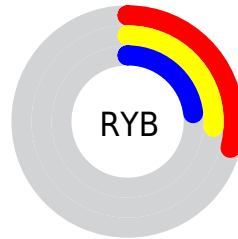
Distribution



Red (29%)

Green (25%)

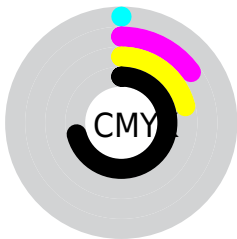
Blue (23%)



Red (29%)

Yellow (26%)

Blue (23%)

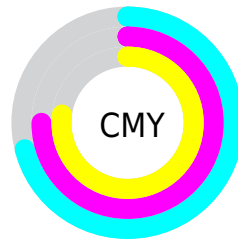


Cyan (0%)

Magenta (15%)

Yellow (21%)

Black (71%)



Cyan (71%)

Magenta (75%)

Yellow (77%)

Brightness & Saturation Gradients

These gradients show how the HunterLab color 23.4060, 1.1704, 3.9620 changes by changing the brightness by 10 percent. The first figure shows a shift by +10% for each color and the second figure -10%.

Similar to the brightness gradients but the following saturation gradients show a change of the HunterLab color 23.4060, 1.1704, 3.9620 by changing the saturation by 10% instead.

■ 23.4060, 1.1704,
3.9620

■ 23.4060, 1.1704,
3.9620

■ 124.2361, -2.4703,
11.6580

■ 15.9083, 1.2902,
3.1850

■ 41.0359, 0.7081,
5.5410

■ 9.4445, 1.3132,
2.6217

■ 51.0109, 0.3877,
6.3540

0.0000, NaN, NaN

■ 61.6843, 0.0164,
7.1861

0.0000, NaN, NaN

■ 73.0130, -0.4011,
8.0386

0.0000, NaN, NaN

■ 84.9612, -0.8612,
8.9118

0.0000, NaN, NaN

■ 97.4982, -1.3611,

0.0000, NaN, NaN

0.0000, NaN, NaN

9.8062

0.0000, NaN, NaN

110.5975, -1.8981,
10.7216

■ 23.4060, 1.1704,
3.9620

■ 23.4060, 1.1704,
3.9620

■ 22.0261, 2.5125,
5.0292

■ 24.8411, -0.0870,
2.8179

■ 20.7060, 3.9467,
6.0047

■ 26.3244, -1.2641,
1.6071

■ 19.4533, 5.4752,
6.8729

■ 27.8519, -2.3685,
0.3390

■ 18.2759, 7.0967,
7.6147

■ 29.4195, -3.4071,
-0.9789

■ 17.1829, 8.8031,
8.2093

■ 31.0239, -4.3866,
-2.3406

■ 16.1837, 10.5768,
8.6354

■ 32.6620, -5.3128,
-3.7410

■ 15.2857, 12.3757,
8.9116

■ 34.3312, -6.1915,
-5.1761

■ 14.5825, 13.8588,
9.2283

■ 36.0293, -7.0274,
-6.6426

■ 37.7543, -7.8252,
-8.1375

Harmonies

Analogous

The Analogous color harmony consists of three colors that are next to each other on the color wheel.



23.4065, 2.4180, 2.5874



23.4060, 1.1704, 3.9620



23.4065, -0.6994, 4.6043

Triad

The Triadic color harmony groups three colors that are evenly spaced from another and form a triangle on the color wheel.



23.4065, 1.1697, 3.9624



23.4065, -4.9255, 1.7896



23.4065, 0.1896, -2.3725

Complementary

The Complementary color scheme is a pair of colors which are on the opposite of each other on the color wheel.



23.4060, 1.1704, 3.9620



24.1205, -3.2573, -1.5567

Split Complementary

Split-complementary colors differ from the complementary color scheme. The scheme consists of three colors, the original color and two neighbors of the complement color.



23.4065, -1.7959, -2.6311



23.4060, 1.1704, 3.9620



23.4065, -4.7055, -0.1201

Square

The Square scheme is like the rectangle color scheme, but the four colors are evenly spaced on the color wheel.



23.4065, 1.1697, 3.9624



23.4065, -4.1870, 3.4203



23.4065, -3.5755, -1.7765



23.4065, 1.8390, -1.0968

Rectangle

The Rectangle color scheme consists of four colors that form a rectangle on the color wheel.



23.4060, 1.1704, 3.9620



23.4065, -2.0278, 4.5709



23.4065, -3.5755, -1.7765



23.4065, -0.4623, -2.5853

Sweetspot

The Sweet Spot groups the original color and five complimentary colors.



23.4065, 1.1697, 3.9624



33.3234, -0.9090, 2.8732



22.5135, 4.8229, -1.3899



16.7110, -0.4394, 1.4603



65.8695, -3.5146, 3.5788



17.3419, -0.9253, 0.9422

Same Dimension

The Same Dimension uses a secret algorithm to generate beautiful new colors.



23.4065, 1.1697, 3.9624



29.4554, 2.4924, 5.9542



25.3389, -2.1071, 5.8950



13.3181, -0.2144, 1.3215



19.6256, 20.1624, 12.4462



46.1972, 53.5155, 29.4034

Inverse Universe

The Inverse Universe completely reimagines the original color for something new.



24.1205, -3.2573, -1.5567



30.6210, -4.7484, -3.0649



22.1470, -0.0123, -4.1739



13.4738, -1.1776, 0.1194



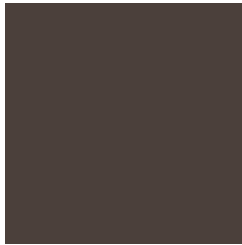
23.1387, -5.0405, -18.0403



54.8237, -9.9911, -46.9570

Previews

White Background



This preview shows how the HunterLab color 23.4060, 1.1704, 3.9620 looks on a white background.

Color Contrast Check

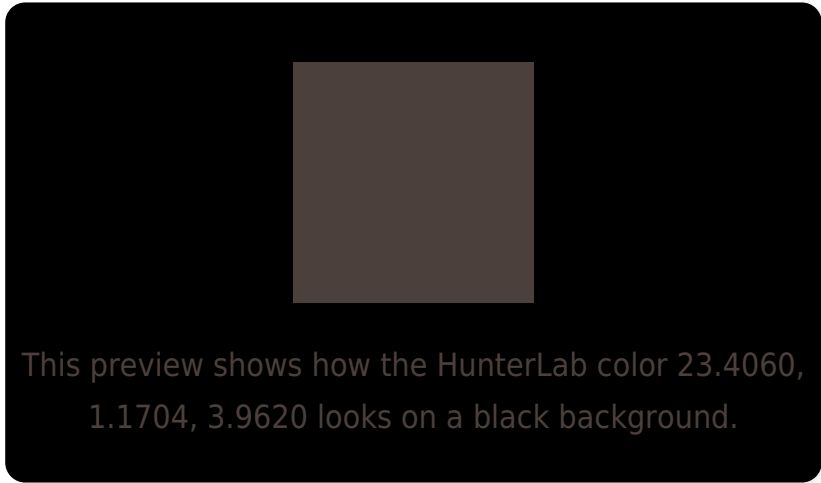
Large Text (above 18pt) WCAG AA ✓ Pass

Any Text WCAG AA ✓ Pass

Large Text (above 18pt) WCAG AAA ✓ Pass

Any Text WCAG AAA ✓ Pass

Black Background



Color Contrast Check

Large Text (above 18pt) WCAG AA × Fail

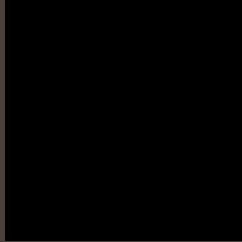
Any Text WCAG AA × Fail

Large Text (above 18pt) WCAG AAA × Fail

Any Text WCAG AAA × Fail

If you want to check with other color combinations, try the [Color Contrast Checker](#).

HunterLab 23.4060, 1.1704, 3.9620 Background



This preview shows how black text looks on a background with the HunterLab color 23.4060, 1.1704, 3.9620.



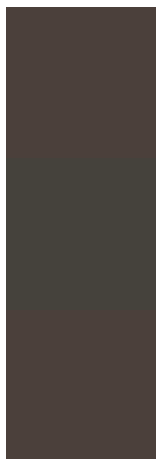
This preview shows how white text looks on a background with the HunterLab color 23.4060, 1.1704,

3.9620.

Color Blindness Simulation

Color vision deficiency is a very complex topic, and I could not describe the different causes any better than Wikipedia does, so if you want to learn more, you should check out their [article about color blindness](#).

Dichromacy



Original Color

23.4060, 1.1704, 3.9620

Protanopia

23.4262, -1.2360, 3.5939

Deuteranopia

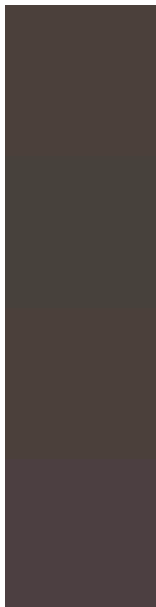
23.4060, 1.1704, 3.9620



Tritanopia

23.4710, 3.0461, 0.7012

Trichromacy



Original Color

23.4060, 1.1704, 3.9620

Protanomaly

23.3376, -0.2692, 3.5151

Deuteranomaly

23.4060, 1.1704, 3.9620

Tritanomaly

23.3948, 2.6421, 1.7878

Monochromacy



Original Color

23.4060, 1.1704, 3.9620

Achromatopsia

23.6915, -1.2641, 1.2872

Achromatomaly

23.5981, -0.4545, 2.3462

CSS Examples

Text

The CSS property to change the color of the text to HunterLab 23.4060, 1.1704, 3.9620 is called "color". The color property can be set on classes, ids or directly on the HTML element.

This example shows how text in the color `rgb(75, 64, 59)` looks like.

```
.text, #text, p{  
    color:rgb(75, 64, 59)  
}
```

If you want to add a text shadow in that color use the text-shadow property, you can generate a text shadow directly with our [CSS Text Shadow Generator](#).

Here you see how black text with a 4 pixel rgb(75, 64, 59) colored shadow looks like.

```
.shadow{ text-shadow: 4px 4px 2px rgb(75, 64, 59) }
```

Border

The CSS property to change the border of an element to HunterLab 23.4060, 1.1704, 3.9620 is called "border". The border property can be set on classes, ids or directly on the HTML element.

This example shows the color as border, it can be applied via the CSS property "border" or "border-color".

```
.border, #border, table{ border:4px solid rgb(75, 64, 59) }
```


If only the border color should be changed use the property `border-color`.

```
.border{ border-color:rgb(75, 64, 59) }
```

If you want to add a box shadow in that color use:

Here you see how a box with a 4 pixel `rgb(75, 64, 59)` colored shadow looks like.

```
.boxshadow{ -moz-box-shadow:4px 4px 4px  
4px rgb(75, 64, 59); -webkit-box-  
shadow:4px 4px 4px 4px rgb(75, 64, 59);  
box-shadow:4px 4px 4px 4px rgb(75, 64, 59)  
}
```

Background

The CSS property to change the background color of an element to HunterLab 23.4060, 1.1704, 3.9620 is called "background". The background property can be set on classes, ids or directly on the HTML element.

```
.background, #background, body{  
background: rgb(75, 64, 59) }
```

If only the background color should be changed can be used:

```
.background{ background-color: rgb(75, 64,  
59) }
```

This example shows the color as background, it is applied via the CSS property "background".

To optimize and compress your CSS code, you can use our [online CSS compressor and optimizer](#) based on csstidy. If you want to create a linear or radial gradient as background or border, check our [CSS Gradient Generator](#).

Hey! You found this booklet interesting? Support Converting Colors with the new Membership Option!

The pro membership hides all ads, plus gives you double the colors in the color bucket, and more awesome pro features!

[Learn more, Memberships starting at \\$2.50/m!](#)

**Follow me
on Twitter!**

@ConvertingColor