

Converting Colors

HunterLab(23.3366, 0.5491,
6.2456)

Have a look what the booklet for
HunterLab(23.3366, 0.5491, 6.2456)
contains.

HunterLab(23.3479, 0.6834, 6.1487)	3
<i>Conversions</i>	4
<i>Details</i>	6
<i>Harmonies</i>	12
<i>Previews</i>	24
<i>Color Blindness Simulation</i>	28
<i>CSS Examples</i>	31

Color

**HunterLab(23.3479, 0.6834,
6.1487)**

Conversions

Conversions Part 1

Format	Color
Hex	4C4034
RGB	76, 64, 52
RGB Percent	30%, 25%, 20%
CMY	0.7020, 0.7490, 0.7961
CMYK	0.00, 0.16, 0.32, 0.70
HSL	30°, 19%, 25%
HSV	30°, 32%, 30%
XYZ	5.4337, 5.4512, 4.0146
YIQ	66.2200, 11.0040, -1.1880

Conversions

Conversions Part 2

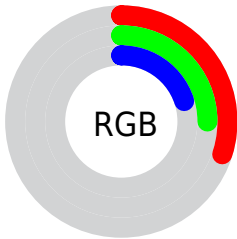
Format	Color
R_{YB}	76, 76, 52
Decimal	4997172
CIE Lab	27.98, 3.03, 9.27
CIE LCh	28, 9.750, 71.896
Yxy	5.4515, 0.3647, 0.3659
Android (android.graphics.Color)	4283187252 (0xFF4C4034)
YUV	66.2200, -7.0105, 8.5771
Hunter-Lab	23.3479, 0.6834, 6.1487

Details

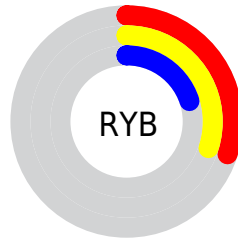
The HunterLab color $[23.3479, 0.6834, 6.1487]$ is a dark color, and the websafe version is hex 333333 . A complement of this color would be $[22.1778, -2.1574, -4.6513]$, and the grayscale version is $[23.4396, -1.2507, 1.2735]$.

A 20% lighter version of the original color is $[41.0246, -0.1911, 8.5758]$, and $[9.4670, 0.7969, 4.5885]$ is the 20% darker color. If you saturate the color by 10%, you get $[22.3033, 1.5395, 7.3302]$, and if you desaturate by 10%, it is $[24.4312, -0.0807, 4.8122]$.

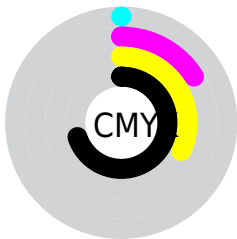
Distribution



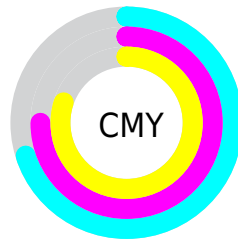
- Red (30%)
- Green (25%)
- Blue (20%)



- Red (30%)
- Yellow (30%)
- Blue (20%)



- Cyan (0%)
- Magenta (16%)
- Yellow (32%)
- Black (70%)



- Cyan (70%)
- Magenta (75%)
- Yellow (80%)

Brightness & Saturation Gradients

These gradients show how the HunterLab color 23.3479, 0.6834, 6.1487 changes by changing the brightness by 10 percent. The first figure shows a shift by +10% for each color and the second figure -10%.

Similar to the brightness gradients but the following saturation gradients show a change of the HunterLab color 23.3479, 0.6834, 6.1487 by changing the saturation by 10% instead.

■ 23.3479, 0.6834,
6.1487

■ 23.3479, 0.6834,
6.1487

■ 124.1347, -3.2981,
16.0198

■ 15.8573, 0.8572,
4.9927

■ 40.9658, 0.1278,
8.3505

■ 9.4016, 0.9417,
4.5977

■ 50.9356, -0.2340,
9.4313

0.0000, NaN, NaN

0.0000, NaN, NaN

■ 61.6040, -0.6440,
10.5108

0.0000, NaN, NaN

■ 72.9281, -1.0982,
11.5941

0.0000, NaN, NaN

■ 84.8719, -1.5932,
12.6846

0.0000, NaN, NaN

0.0000, NaN, NaN

■ 97.4047, -2.1263,

13.7847

0.0000, NaN, NaN

110.5000, -2.6953,
14.8960

■ 23.3479, 0.6834,
6.1487

■ 23.3479, 0.6834,
6.1487

■ 22.3033, 1.5395,
7.3302

■ 24.4312, -0.0807,
4.8122

■ 21.2989, 2.4945,
8.3413

■ 25.5490, -0.7558,
3.3335

■ 20.3383, 3.5506,
9.1678

■ 26.6992, -1.3481,
1.7254

■ 19.4247, 4.7090,
9.7962

■ 27.8796, -1.8635,
-0.0002

■ 18.5617, 5.9676,
10.2149

■ 29.0881, -2.3075,
-1.8330

■ 17.7501, 7.3086,
10.4515

■ 30.3228, -2.6854,
-3.7635

■ 17.0970, 8.4362,
10.6828

■ 31.5821, -3.0023,
-5.7834

■ 32.8644, -3.2629,
-7.8851

■ 34.1683, -3.4716,
-10.0622

Harmonies

Analogous

The Analogous color harmony consists of three colors that are next to each other on the color wheel.



23.3484, 3.4785, 4.8294



23.3479, 0.6834, 6.1487



23.3484, -2.4935, 6.2741

Triad

The Triadic color harmony groups three colors that are evenly spaced from another and form a triangle on the color wheel.



23.3484, 0.6826, 6.1490



23.3484, -6.9314, 0.0405



23.3484, 2.9758, -3.4839

Complementary

The Complementary color scheme is a pair of colors which are on the opposite of each other on the color wheel.



23.3479, 0.6834, 6.1487



22.1778, -2.1574, -4.6513

Split Complementary

Split-complementary colors differ from the complementary color scheme. The scheme consists of three colors, the original color and two neighbors of the complement color.



23.3484, 0.0261, -5.1636



23.3479, 0.6834, 6.1487



23.3484, -5.6243, -2.9542

Square

The Square scheme is like the rectangle color scheme, but the four colors are evenly spaced on the color wheel.



23.3484, 0.6826, 6.1490



23.3484, -6.7767, 3.0063



23.3484, -3.1160, -4.9577



23.3484, 4.8504, -0.6088

Rectangle

The Rectangle color scheme consists of four colors that form a rectangle on the color wheel.



23.3479, 0.6834, 6.1487



23.3484, -4.3893, 5.6876



23.3484, -3.1160, -4.9577



23.3484, 2.0706, -4.2234

Sweetspot

The Sweet Spot groups the original color and five complimentary colors.



23.3484, 0.6826, 6.1490



34.0658, -1.1818, 3.9406



20.8872, 7.3220, -0.7700



17.3960, -0.5692, 2.1132



66.9319, -3.5713, 3.6365



18.1947, -0.9708, 0.9886

Same Dimension

The Same Dimension uses a secret algorithm to generate beautiful new colors.



23.3484, 0.6826, 6.1490



29.7345, 1.7809, 9.3635



26.3693, -4.2796, 8.8687



13.4800, -0.4878, 1.4991



22.7883, 12.3166, 14.2576



53.8038, 33.8265, 33.7459

Inverse Universe

The Inverse Universe completely reimagines the original color for something new.



22.1778, -2.1574, -4.6513



27.8228, -2.8298, -8.3012



19.2560, 2.9063, -9.1367



13.3085, -0.9070, -0.0790



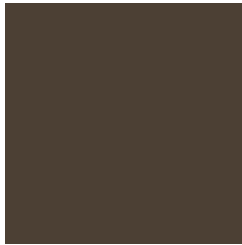
18.2383, 3.1384, -29.5712



42.2919, 11.7247, -78.1714

Previews

White Background



This preview shows how the HunterLab color 23.3479, 0.6834, 6.1487 looks on a white background.

Color Contrast Check

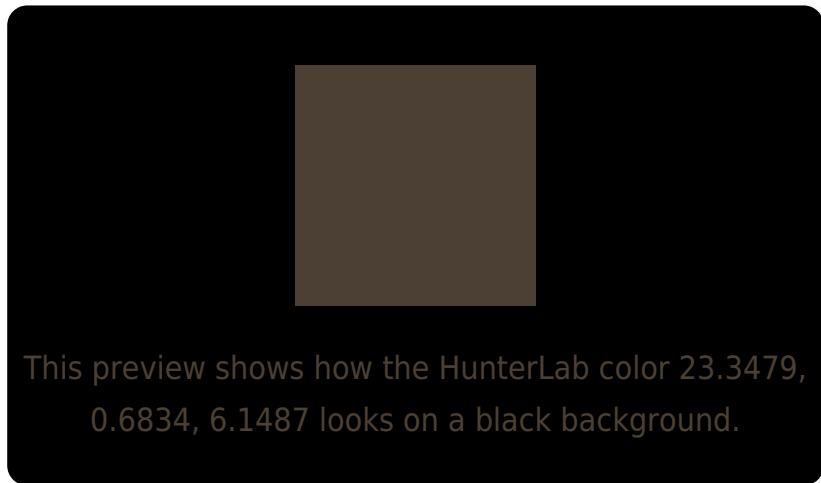
Large Text (above 18pt) WCAG AA ✓ Pass

Any Text WCAG AA ✓ Pass

Large Text (above 18pt) WCAG AAA ✓ Pass

Any Text WCAG AAA ✓ Pass

Black Background



Color Contrast Check

Large Text (above 18pt) WCAG AA × Fail

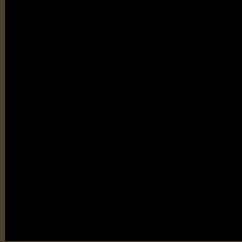
Any Text WCAG AA × Fail

Large Text (above 18pt) WCAG AAA × Fail

Any Text WCAG AAA × Fail

If you want to check with other color combinations, try the [Color Contrast Checker](#).

HunterLab 23.3479, 0.6834, 6.1487 Background



This preview shows how black text looks on a background with the HunterLab color 23.3479, 0.6834, 6.1487.



This preview shows how white text looks on a background with the HunterLab color 23.3479, 0.6834,

Color Blindness Simulation

Color vision deficiency is a very complex topic, and I could not describe the different causes any better than Wikipedia does, so if you want to learn more, you should check out their [article about color blindness](#).

Dichromacy



Original Color

23.3479, 0.6834, 6.1487

Protanopia

23.3571, -1.7729, 5.8118

Deuteranopia

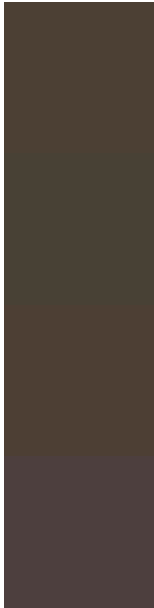
23.1964, 1.4058, 6.0142



Tritanopia

23.3885, 3.9281, 1.0192

Trichromacy



Original Color

23.3479, 0.6834, 6.1487

Protanomaly

23.2709, -0.7961, 5.7440

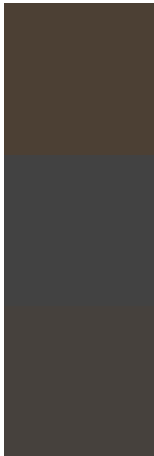
Deuteranomaly

23.1964, 1.4058, 6.0142

Tritanomaly

23.4107, 2.5500, 2.9280

Monochromacy



Original Color

23.3479, 0.6834, 6.1487

Achromatopsia

23.3410, -1.2454, 1.2682

Achromatomaly

23.2800, -0.4213, 3.0938

CSS Examples

Text

The CSS property to change the color of the text to HunterLab 23.3479, 0.6834, 6.1487 is called "color". The color property can be set on classes, ids or directly on the HTML element.

This example shows how text in the color `rgb(76, 64, 52)` looks like.

```
.text, #text, p{  
    color:rgb(76, 64, 52)  
}
```

If you want to add a text shadow in that color use the text-shadow property, you can generate a text shadow directly with our [CSS Text Shadow Generator](#).

Here you see how black text with a 4 pixel rgb(76, 64, 52) colored shadow looks like.

```
.shadow{ text-shadow: 4px 4px 2px rgb(76, 64, 52) }
```

Border

The CSS property to change the border of an element to HunterLab 23.3479, 0.6834, 6.1487 is called "border".

The border property can be set on classes, ids or directly on the HTML element.

This example shows the color as border, it can be applied via the CSS property "border" or "border-color".

```
.border, #border, table{ border:4px solid rgb(76, 64, 52) }
```


If only the border color should be changed use the property border-color.

```
.border{ border-color:rgb(76, 64, 52) }
```

If you want to add a box shadow in that color use:

Here you see how a box with a 4 pixel rgb(76, 64, 52) colored shadow looks like.

```
.boxshadow{ -moz-box-shadow:4px 4px 4px  
4px rgb(76, 64, 52); -webkit-box-  
shadow:4px 4px 4px 4px rgb(76, 64, 52);  
box-shadow:4px 4px 4px 4px rgb(76, 64, 52)  
}
```

Background

The CSS property to change the background color of an element to HunterLab 23.3479, 0.6834, 6.1487 is called "background". The background property can be set on classes, ids or directly on the HTML element.

```
.background, #background, body{  
background: rgb(76, 64, 52) }
```

If only the background color should be changed can be used:

```
.background{ background-color: rgb(76, 64,  
52) }
```

This example shows the color as background, it is applied via the CSS property "background".

To optimize and compress your CSS code, you can use our [online CSS compressor and optimizer](#) based on csstidy. If you want to create a linear or radial gradient as background or border, check our [CSS Gradient Generator](#).

Hey! You found this booklet interesting? Support Converting Colors with the new Membership Option!

The pro membership hides all ads, plus gives you double the colors in the color bucket, and more awesome pro features!

[Learn more, Memberships starting at \\$2.50/m!](#)

**Follow me
on Twitter!**

@ConvertingColor