

Converting Colors

HunterLab(23.3615, 1.1967,
6.4118)

Have a look what the booklet for
HunterLab(23.3615, 1.1967, 6.4118)
contains.

HunterLab(23.4171, 0.8799, 6.5150)	3
<i>Conversions</i>	4
<i>Details</i>	6
<i>Harmonies</i>	12
<i>Previews</i>	24
<i>Color Blindness Simulation</i>	28
<i>CSS Examples</i>	31

Color

**HunterLab(23.4171, 0.8799,
6.5150)**

Conversions

Conversions Part 1

Format	Color
Hex	4D4033
RGB	77, 64, 51
RGB Percent	30%, 25%, 20%
CMY	0.6980, 0.7490, 0.8000
CMYK	0.00, 0.17, 0.34, 0.70
HSL	30°, 20%, 25%
HSV	30°, 34%, 30%
XYZ	5.4915, 5.4836, 3.9010
YIQ	66.4050, 11.9210, -1.2870

Conversions

Conversions Part 2

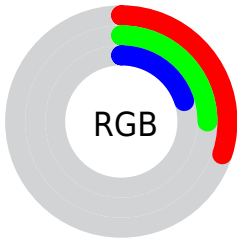
Format	Color
R_{YB}	77, 77, 51
Decimal	5062707
CIE Lab	28.07, 3.34, 10.05
CIE LCh	28, 10.590, 71.641
Yxy	5.4839, 0.3691, 0.3686
Android (android.graphics.Color)	4283252787 (0xFF4D4033)
YUV	66.4050, -7.5947, 9.2918
Hunter-Lab	23.4171, 0.8799, 6.5150

Details

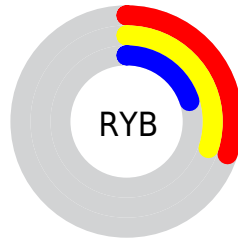
The HunterLab color **23.4171, 0.8799, 6.5150** is a dark color, and the websafe version is hex **333333**. A complement of this color would be **22.1501, -2.1914, -5.1834**, and the grayscale version is **23.5061, -1.2542, 1.2771**.

A 20% lighter version of the original color is **41.0938, 0.0005, 9.0049**, and **9.5295, 0.9590, 4.9955** is the 20% darker color. If you saturate the color by 10%, you get **22.3655, 1.7714, 7.6768**, and if you desaturate by 10%, it is **24.5088, 0.0831, 5.1922**.

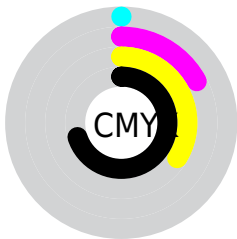
Distribution



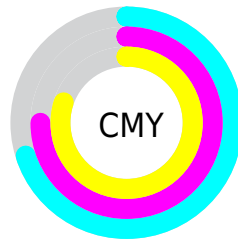
- Red (30%)
- Green (25%)
- Blue (20%)



- Red (30%)
- Yellow (30%)
- Blue (20%)



- Cyan (0%)
- Magenta (17%)
- Yellow (34%)
- Black (70%)



- Cyan (70%)
- Magenta (75%)
- Yellow (80%)

Brightness & Saturation Gradients

These gradients show how the HunterLab color 23.4171, 0.8799, 6.5150 changes by changing the brightness by 10 percent. The first figure shows a shift by +10% for each color and the second figure -10%.

Similar to the brightness gradients but the following saturation gradients show a change of the HunterLab color 23.4171, 0.8799, 6.5150 by changing the saturation by 10% instead.

■ 23.4171, 0.8799,
6.5150

■ 23.4171, 0.8799,
6.5150

■ 124.2555, -2.9652,
16.7789

■ 15.9181, 1.0321,
5.2903

■ 41.0493, 0.3616,
8.8297

■ 9.4527, 1.0921,
4.9222

■ 51.0253, 0.0164,
9.9589

0.0000, NaN, NaN

0.0000, NaN, NaN

■ 61.6997, -0.3781,
11.0831

0.0000, NaN, NaN

■ 73.0293, -0.8177,
12.2081

0.0000, NaN, NaN

■ 84.9783, -1.2987,
13.3378

0.0000, NaN, NaN

0.0000, NaN, NaN

■ 97.5161, -1.8185,

14.4749

0.0000, NaN, NaN

110.6162, -2.3746,
15.6215

■ 23.4171, 0.8799,
6.5150

■ 23.4171, 0.8799,
6.5150

■ 22.3655, 1.7714,
7.6768

■ 24.5088, 0.0831,
5.1922

■ 21.3555, 2.7643,
8.6619

■ 25.6360, -0.6218,
3.7216

■ 20.3908, 3.8606,
9.4560

■ 26.7969, -1.2413,
2.1167

■ 19.4748, 5.0608,
10.0454

■ 27.9890, -1.7811,
0.3896

■ 18.6110, 6.3620,
10.4195

■ 29.2100, -2.2472,
-1.4487

■ 17.7979, 7.7326,
10.6431

■ 30.4582, -2.6448,
-3.3884

■ 17.3106, 8.5809,
10.8169

■ 31.7317, -2.9793,
-5.4208

■ 33.0290, -3.2556,
-7.5380

■ 34.3485, -3.4782,
-9.7332

Harmonies

Analogous

The Analogous color harmony consists of three colors that are next to each other on the color wheel.



23.4176, 3.9247, 5.0978



23.4171, 0.8799, 6.5150



23.4176, -2.5765, 6.6590

Triad

The Triadic color harmony groups three colors that are evenly spaced from another and form a triangle on the color wheel.



23.4176, 0.8791, 6.5153



23.4176, -7.4099, -0.0370



23.4176, 3.3300, -3.9582

Complementary

The Complementary color scheme is a pair of colors which are on the opposite of each other on the color wheel.



23.4171, 0.8799, 6.5150



22.1501, -2.1914, -5.1834

Split Complementary

Split-complementary colors differ from the complementary color scheme. The scheme consists of three colors, the original color and two neighbors of the complement color.



23.4176, 0.1052, -5.7998



23.4171, 0.8799, 6.5150



23.4176, -6.0125, -3.3263

Square

The Square scheme is like the rectangle color scheme, but the four colors are evenly spaced on the color wheel.



23.4176, 0.8791, 6.5153



23.4176, -7.2295, 3.1795



23.4176, -3.3071, -5.5531



23.4176, 5.3953, -0.8049

Rectangle

The Rectangle color scheme consists of four colors that form a rectangle on the color wheel.



23.4171, 0.8799, 6.5150



23.4176, -4.6356, 6.0427



23.4176, -3.3071, -5.5531



23.4176, 2.3380, -4.7704

Sweetspot

The Sweet Spot groups the original color and five complimentary colors.



23.4176, 0.8791, 6.5153



33.9095, -1.0970, 4.1555



20.7742, 8.0666, -0.9014



17.3245, -0.5299, 2.2111



66.9319, -3.5713, 3.6365



18.1947, -0.9708, 0.9886

Same Dimension

The Same Dimension uses a secret algorithm to generate beautiful new colors.



23.4176, 0.8791, 6.5153



29.3120, 2.1508, 9.8192



26.6919, -4.4997, 9.4115



13.4800, -0.4878, 1.4991



22.7883, 12.3165, 14.2577



53.8039, 33.8262, 33.7459

Inverse Universe

The Inverse Universe completely reimagines the original color for something new.



22.1501, -2.1914, -5.1834



27.2580, -2.7887, -9.1747



18.9931, 3.3087, -10.1564



13.3085, -0.9070, -0.0790



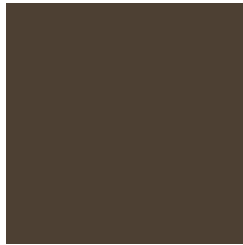
18.2382, 3.1385, -29.5714



42.2917, 11.7250, -78.1719

Previews

White Background



This preview shows how the HunterLab color 23.4171, 0.8799, 6.5150 looks on a white background.

Color Contrast Check

Large Text (above 18pt) WCAG AA ✓ Pass

Any Text WCAG AA ✓ Pass

Large Text (above 18pt) WCAG AAA ✓ Pass

Any Text WCAG AAA ✓ Pass

Black Background



Color Contrast Check

Large Text (above 18pt) WCAG AA × Fail

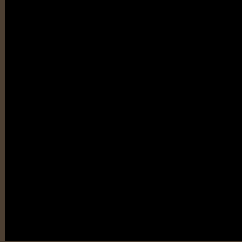
Any Text WCAG AA × Fail

Large Text (above 18pt) WCAG AAA × Fail

Any Text WCAG AAA × Fail

If you want to check with other color combinations, try the [Color Contrast Checker](#).

HunterLab 23.4171, 0.8799, 6.5150 Background



This preview shows how black text looks on a background with the HunterLab color 23.4171, 0.8799, 6.5150.



This preview shows how white text looks on a background with the HunterLab color 23.4171, 0.8799,

6.5150.

Color Blindness Simulation

Color vision deficiency is a very complex topic, and I could not describe the different causes any better than Wikipedia does, so if you want to learn more, you should check out their [article about color blindness](#).

Dichromacy



Original Color

23.4171, 0.8799, 6.5150

Protanopia

23.4178, -1.5995, 6.1765

Deuteranopia

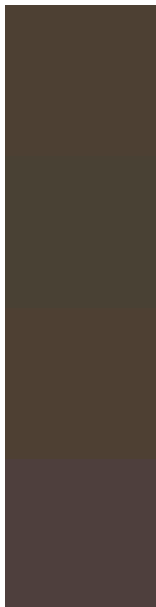
23.5064, 1.1820, 6.6055



Tritanopia

23.4793, 4.2234, 1.1324

Trichromacy



Original Color

23.4171, 0.8799, 6.5150

Protanomaly

23.3345, -0.6154, 6.1130

Deuteranomaly

23.5064, 1.1820, 6.6055

Tritanomaly

23.4769, 2.7230, 3.3644

Monochromacy



Original Color

23.4171, 0.8799, 6.5150

Achromatopsia

23.3410, -1.2454, 1.2682

Achromatomaly

23.2800, -0.4213, 3.0938

CSS Examples

Text

The CSS property to change the color of the text to HunterLab 23.4171, 0.8799, 6.5150 is called "color". The color property can be set on classes, ids or directly on the HTML element.

This example shows how text in the color `rgb(77, 64, 51)` looks like.

```
.text, #text, p{  
    color:rgb(77, 64, 51)  
}
```

If you want to add a text shadow in that color use the text-shadow property, you can generate a text shadow directly with our [CSS Text Shadow Generator](#).

Here you see how black text with a 4 pixel rgb(77, 64, 51) colored shadow looks like.

```
.shadow{ text-shadow: 4px 4px 2px rgb(77, 64, 51) }
```

Border

The CSS property to change the border of an element to HunterLab 23.4171, 0.8799, 6.5150 is called "border". The border property can be set on classes, ids or directly on the HTML element.

This example shows the color as border, it can be applied via the CSS property "border" or "border-color".

```
.border, #border, table{ border:4px solid rgb(77, 64, 51) }
```


If only the border color should be changed use the property `border-color`.

```
.border{ border-color:rgb(77, 64, 51) }
```

If you want to add a box shadow in that color use:

Here you see how a box with a 4 pixel `rgb(77, 64, 51)` colored shadow looks like.

```
.boxshadow{ -moz-box-shadow:4px 4px 4px  
4px rgb(77, 64, 51); -webkit-box-  
shadow:4px 4px 4px 4px rgb(77, 64, 51);  
box-shadow:4px 4px 4px 4px rgb(77, 64, 51)  
}
```

Background

The CSS property to change the background color of an element to HunterLab 23.4171, 0.8799, 6.5150 is called "background". The background property can be set on classes, ids or directly on the HTML element.

```
.background, #background, body{  
background: rgb(77, 64, 51) }
```

If only the background color should be changed can be used:

```
.background{ background-color: rgb(77, 64,  
51) }
```

This example shows the color as background, it is applied via the CSS property "background".

To optimize and compress your CSS code, you can use our [online CSS compressor and optimizer](#) based on csstidy. If you want to create a linear or radial gradient as background or border, check our [CSS Gradient Generator](#).

Hey! You found this booklet interesting? Support Converting Colors with the new Membership Option!

The pro membership hides all ads, plus gives you double the colors in the color bucket, and more awesome pro features!

[Learn more, Memberships starting at \\$2.50/m!](#)

**Follow me
on Twitter!**

@ConvertingColor