

Converting Colors

HunterLab(23.3660, 8.2666,
2.6101)

Have a look what the booklet for
HunterLab(23.3660, 8.2666, 2.6101)
contains.

HunterLab(23.3660, 8.2666, 2.6101)	3
<i>Conversions</i>	4
<i>Details</i>	6
<i>Harmonies</i>	12
<i>Previews</i>	24
<i>Color Blindness Simulation</i>	28
<i>CSS Examples</i>	31

Color

**HunterLab(23.3660, 8.2666,
2.6101)**

Conversions

Conversions Part 1

Format	Color
Hex	583A3F
RGB	88, 58, 63
RGB Percent	35%, 23%, 25%
CMY	0.6549, 0.7725, 0.7529
CMYK	0.00, 0.34, 0.28, 0.65
HSL	350°, 21%, 29%
HSV	350°, 34%, 35%
XYZ	6.4348, 5.4597, 5.4173
YIQ	67.5400, 16.2750, 7.9150

Conversions

Conversions Part 2

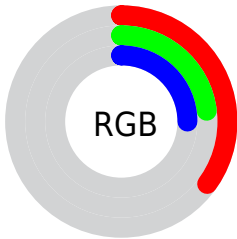
Format	Color
RYB	88, 58, 63
Decimal	5782079
CIELab	28.01, 14.10, 2.31
CIElCh	28, 14.288, 9.321
Yxy	5.4600, 0.3717, 0.3154
Android (android.graphics.Color)	4283972159 (0xFF583A3F)
YUV	67.5400, -2.2382, 17.9434
Hunter-Lab	23.3660, 8.2666, 2.6101

Details

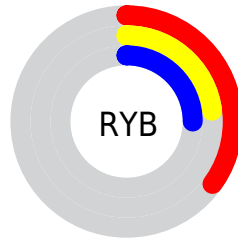
The HunterLab color $[23.3660, 8.2666, 2.6101]$ is a dark color, and the websafe version is hex 663333 . A complement of this color would be $[29.1610, -9.4309, 1.1640]$, and the grayscale version is $[23.8851, -1.2744, 1.2977]$.

A 20% lighter version of the original color is $[40.9143, 9.4092, 3.5826]$, and $[9.4665, 6.7227, 1.5074]$ is the 20% darker color. If you saturate the color by 10%, you get $[21.3789, 11.3220, 3.1140]$, and if you desaturate by 10%, it is $[25.5186, 5.2581, 2.2250]$.

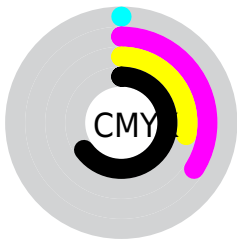
Distribution



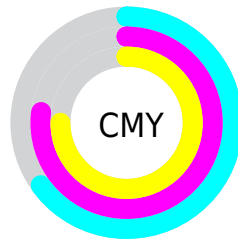
- Red (35%)
- Green (23%)
- Blue (25%)



- Red (35%)
- Yellow (23%)
- Blue (25%)



- Cyan (0%)
- Magenta (34%)
- Yellow (28%)
- Black (65%)



- Cyan (65%)
- Magenta (77%)
- Yellow (75%)

Brightness & Saturation Gradients

These gradients show how the HunterLab color 23.3660, 8.2666, 2.6101 changes by changing the brightness by 10 percent. The first figure shows a shift by +10% for each color and the second figure -10%.

Similar to the brightness gradients but the following saturation gradients show a change of the HunterLab color 23.3660, 8.2666, 2.6101 by changing the saturation by 10% instead.

■ 23.3660, 8.2666,
2.6101

■ 23.3660, 8.2666,
2.6101

■ 124.1663, 9.1743,
9.1433

■ 15.8732, 7.6949,
2.0301

■ 40.9877, 9.0264,
3.8611

■ 9.4149, 6.9566,
1.5314

■ 50.9591, 9.2565,
4.5316

0.0000, INF, NaN

■ 61.6291, 9.4042,
5.2314

0.0000, NaN, NaN

■ 72.9546, 9.4789,
5.9599

0.0000, NaN, NaN

■ 84.8998, 9.4878,
6.7160

0.0000, NaN, NaN

■ 97.4339, 9.4370,

0.0000, NaN, NaN

0.0000, NaN, NaN

110.5305, 9.3311,
8.3085

■ 23.3660, 8.2666,
2.6101

■ 23.3660, 8.2666,
2.6101

■ 21.3789, 11.3220,
3.1140

■ 25.5186, 5.2581,
2.2250

■ 19.5850, 14.3714,
3.7451

■ 27.8106, 2.3253,
1.9439

■ 18.0181, 17.3142,
4.5031

■ 30.2224, -0.5250,
1.7527

■ 16.7130, 19.9982,
5.3693

■ 32.7378, -3.2949,
1.6381

■ 15.7001, 22.2291,
6.2991

■ 35.3435, -5.9914,
1.5887

■ 14.9488, 23.9731,
7.1880

■ 38.0291, -8.6231,
1.5945

■ 14.5198, 25.0966,
7.5921

■ 40.7858, -11.1990,
1.6473

■ 43.6065, -13.7279,
1.7403

■ 46.4853, -16.2172,
1.8681

Harmonies

Analogous

The Analogous color harmony consists of three colors that are next to each other on the color wheel.



23.3666, 7.7379, -1.9420



23.3660, 8.2666, 2.6101



23.3666, 6.0941, 6.0533

Triad

The Triadic color harmony groups three colors that are evenly spaced from another and form a triangle on the color wheel.



23.3666, 8.2656, 2.6105



23.3666, -6.6581, 6.9508



23.3666, -4.3282, -8.1883

Complementary

The Complementary color scheme is a pair of colors which are on the opposite of each other on the color wheel.



23.3660, 8.2666, 2.6101



29.1610, -9.4309, 1.1640

Split Complementary

Split-complementary colors differ from the complementary color scheme. The scheme consists of three colors, the original color and two neighbors of the complement color.



23.3666, -7.7824, -4.7982



23.3660, 8.2666, 2.6101



23.3666, -9.0526, 4.0856

Square

The Square scheme is like the rectangle color scheme, but the four colors are evenly spaced on the color wheel.



23.3666, 8.2656, 2.6105



23.3666, -2.6814, 8.2155



23.3666, -9.4475, -0.1509



23.3666, 0.2207, -8.7971

Rectangle

The Rectangle color scheme consists of four colors that form a rectangle on the color wheel.



23.3660, 8.2666, 2.6101



23.3666, 3.5008, 7.4782



23.3666, -9.4475, -0.1509



23.3666, -5.6455, -7.3085

Sweetspot

The Sweet Spot groups the original color and five complimentary colors.



23.3666, 8.2656, 2.6105



37.9565, 1.6459, 2.4625



23.6008, 10.4466, -8.4685



18.9623, 0.9994, 1.2517



70.1359, -3.7423, 3.8106



20.7927, -1.1094, 1.1297

Same Dimension

The Same Dimension uses a secret algorithm to generate beautiful new colors.



23.3666, 8.2656, 2.6105



28.7084, 14.2701, 3.9908



25.5239, 3.2770, 6.4857



14.5761, 0.3991, 0.9180



17.8190, 30.7578, 9.6365



42.1203, 72.4815, 24.5107

Inverse Universe

The Inverse Universe completely reimagines the original color for something new.



23.3666, 8.2656, 2.6105



28.7084, 14.2701, 3.9908



26.5577, -4.5962, -4.3274



14.5761, 0.3991, 0.9180



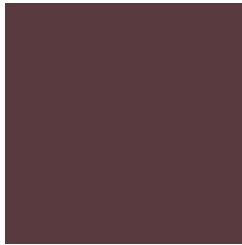
17.8190, 30.7578, 9.6365



42.1203, 72.4815, 24.5107

Previews

White Background



This preview shows how the HunterLab color 23.3660, 8.2666, 2.6101 looks on a white background.

Color Contrast Check

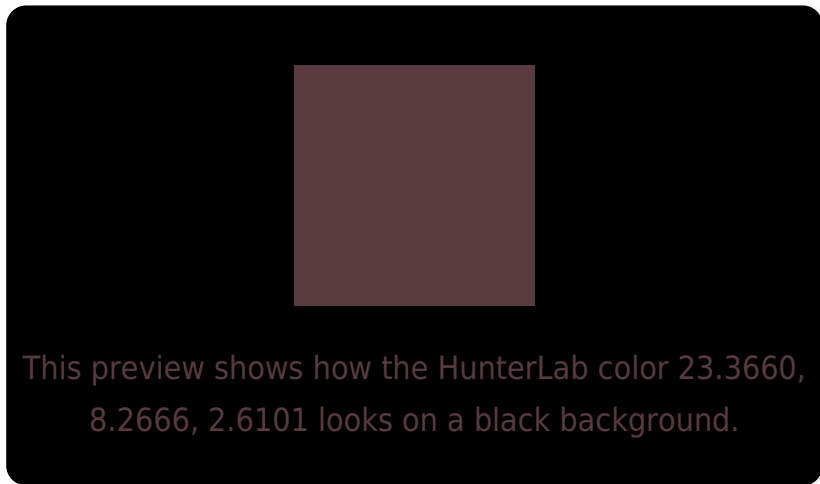
Large Text (above 18pt) WCAG AA ✓ Pass

Any Text WCAG AA ✓ Pass

Large Text (above 18pt) WCAG AAA ✓ Pass

Any Text WCAG AAA ✓ Pass

Black Background



Color Contrast Check

Large Text (above 18pt) WCAG AA × Fail

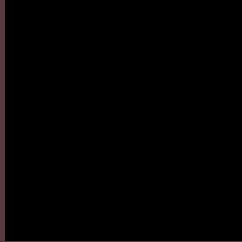
Any Text WCAG AA × Fail

Large Text (above 18pt) WCAG AAA × Fail

Any Text WCAG AAA × Fail

If you want to check with other color combinations, try the [Color Contrast Checker](#).

HunterLab 23.3660, 8.2666, 2.6101 Background



This preview shows how black text looks on a background with the HunterLab color 23.3660, 8.2666, 2.6101.

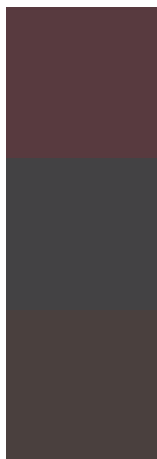


This preview shows how white text looks on a background with the HunterLab color 23.3660, 8.2666,

Color Blindness Simulation

Color vision deficiency is a very complex topic, and I could not describe the different causes any better than Wikipedia does, so if you want to learn more, you should check out their [article about color blindness](#).

Dichromacy



Original Color

23.3660, 8.2666, 2.6101

Protanopia

23.4672, -0.7055, 0.6309

Deuteranopia

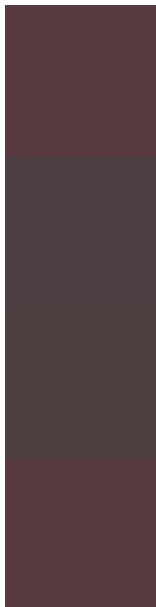
23.3890, 1.2498, 2.8812



Tritanopia

23.3423, 8.1462, 2.9500

Trichromacy



Original Color

23.3660, 8.2666, 2.6101

Protanomaly

23.3328, 2.4868, 1.3239

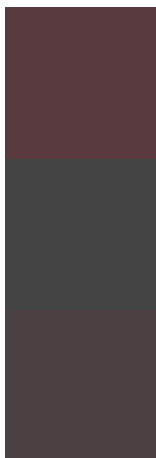
Deuteranomaly

23.3566, 3.5784, 2.8860

Tritanomaly

23.3423, 8.1462, 2.9500

Monochromacy



Original Color

23.3660, 8.2666, 2.6101

Achromatopsia

24.0428, -1.2829, 1.3063

Achromatomaly

23.5712, 2.0550, 1.5956

CSS Examples

Text

The CSS property to change the color of the text to HunterLab 23.3660, 8.2666, 2.6101 is called "color". The color property can be set on classes, ids or directly on the HTML element.

This example shows how text in the color `rgb(88, 58, 63)` looks like.

```
.text, #text, p{  
    color:rgb(88, 58, 63)  
}
```

If you want to add a text shadow in that color use the text-shadow property, you can generate a text shadow directly with our [CSS Text Shadow Generator](#).

Here you see how black text with a 4 pixel rgb(88, 58, 63) colored shadow looks like.

```
.shadow{ text-shadow: 4px 4px 2px rgb(88, 58, 63) }
```

Border

The CSS property to change the border of an element to HunterLab 23.3660, 8.2666, 2.6101 is called "border". The border property can be set on classes, ids or directly on the HTML element.

This example shows the color as border, it can be applied via the CSS property "border" or "border-color".

```
.border, #border, table{ border:4px solid rgb(88, 58, 63) }
```


If only the border color should be changed use the property `border-color`.

```
.border{ border-color:rgb(88, 58, 63) }
```

If you want to add a box shadow in that color use:

Here you see how a box with a 4 pixel `rgb(88, 58, 63)` colored shadow looks like.

```
.boxshadow{ -moz-box-shadow:4px 4px 4px  
4px rgb(88, 58, 63); -webkit-box-  
shadow:4px 4px 4px 4px rgb(88, 58, 63);  
box-shadow:4px 4px 4px 4px rgb(88, 58, 63)  
}
```

Background

The CSS property to change the background color of an element to HunterLab 23.3660, 8.2666, 2.6101 is called "background". The background property can be set on classes, ids or directly on the HTML element.

```
.background, #background, body{  
background: rgb(88, 58, 63) }
```

If only the background color should be changed can be used:

```
.background{ background-color: rgb(88, 58,  
63) }
```

This example shows the color as background, it is applied via the CSS property "background".

To optimize and compress your CSS code, you can use our [online CSS compressor and optimizer](#) based on csstidy. If you want to create a linear or radial gradient as background or border, check our [CSS Gradient Generator](#).

Hey! You found this booklet interesting? Support Converting Colors with the new Membership Option!

The pro membership hides all ads, plus gives you double the colors in the color bucket, and more awesome pro features!

[Learn more, Memberships starting at \\$2.50/m!](#)

**Follow me
on Twitter!**

@ConvertingColor