

Converting Colors

HunterLab(23.4657, 7.5231,
1.2327)

Have a look what the booklet for
HunterLab(23.4657, 7.5231, 1.2327)
contains.

HunterLab(23.4768, 7.6891, 1.1902)	3
<i>Conversions</i>	4
<i>Details</i>	6
<i>Harmonies</i>	12
<i>Previews</i>	24
<i>Color Blindness Simulation</i>	28
<i>CSS Examples</i>	31

Color

**HunterLab(23.4768, 7.6891,
1.1902)**

Conversions

Conversions Part 1

Format	Color
Hex	563B43
RGB	86, 59, 67
RGB Percent	34%, 23%, 26%
CMY	0.6627, 0.7686, 0.7373
CMYK	0.00, 0.31, 0.22, 0.66
HSL	342°, 19%, 28%
HSV	342°, 31%, 34%
XYZ	6.4148, 5.5116, 6.0359
YIQ	67.9850, 13.5240, 8.2120

Conversions

Conversions Part 2

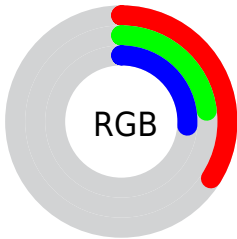
Format	Color
R_{YB}	86, 59, 67
Decimal	5651267
CIE Lab	28.15, 13.29, -0.15
CIE LCh	28, 13.291, 359.371
Yxy	5.5119, 0.3571, 0.3068
Android (android.graphics.Color)	4283841347 (0xFF563B43)
YUV	67.9850, -0.4856, 15.7992
Hunter-Lab	23.4768, 7.6891, 1.1902

Details

The HunterLab color $23.4768, 7.6891, 1.1902$ is a dark color, and the websafe version is hex 663333 . A complement of this color would be $28.5229, -9.1948, 2.4314$, and the grayscale version is $24.0362, -1.2825, 1.3059$.

A 20% lighter version of the original color is $41.2158, 8.0173, 2.2050$, and $9.5810, 6.3424, 0.6672$ is the 20% darker color. If you saturate the color by 10%, you get $21.5187, 10.7570, 1.3040$, and if you desaturate by 10%, it is $25.5861, 4.6543, 1.2197$.

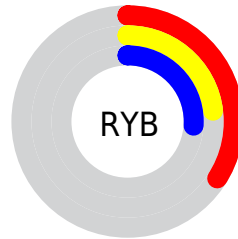
Distribution



Red (34%)

Green (23%)

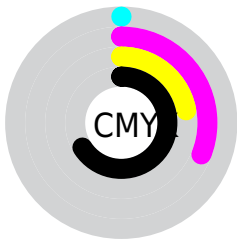
Blue (26%)



Red (34%)

Yellow (23%)

Blue (26%)

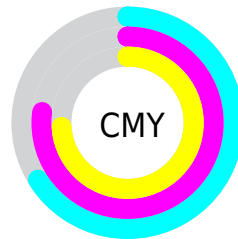


Cyan (0%)

Magenta (31%)

Yellow (22%)

Black (66%)



Cyan (66%)

Magenta (77%)

Yellow (74%)

Brightness & Saturation Gradients

These gradients show how the HunterLab color 23.4768, 7.6891, 1.1902 changes by changing the brightness by 10 percent. The first figure shows a shift by +10% for each color and the second figure -10%.

Similar to the brightness gradients but the following saturation gradients show a change of the HunterLab color 23.4768, 7.6891, 1.1902 by changing the saturation by 10% instead.

■ 23.4768, 7.6891,
1.1902

■ 23.4768, 7.6891,
1.1902

■ 124.3596, 8.2429,
6.6173

■ 15.9706, 7.1695,
0.7925

■ 41.1213, 8.3551,
2.1332

■ 9.4968, 6.4866,
0.4523

■ 51.1027, 8.5424,
2.6686

0.0000, INF, NaN

0.0000, NaN, NaN

■ 61.7821, 8.6497,
3.2426

0.0000, NaN, NaN

■ 73.1165, 8.6859,
3.8526

0.0000, NaN, NaN

■ 85.0700, 8.6581,
4.4967

0.0000, NaN, NaN

0.0000, NaN, NaN

■ 97.6121, 8.5720,

110.7163, 8.4323,
5.8804

■ 23.4768, 7.6891,
1.1902

■ 23.4768, 7.6891,
1.1902

■ 21.5187, 10.7570,
1.3040

■ 25.5861, 4.6543,
1.2197

■ 19.7363, 13.8105,
1.5843

■ 27.8232, 1.6794,
1.3682

■ 18.1600, 16.7604,
2.0531

■ 30.1707, -1.2281,
1.6160

■ 16.8217, 19.4712,
2.7214

■ 32.6143, -4.0689,
1.9464

■ 15.7513, 21.7645,
3.5792

■ 35.1420, -6.8480,
2.3459

■ 14.9546, 23.4993,
4.5723

■ 37.7443, -9.5723,
2.8034

■ 14.3203, 25.0286,
5.3417

■ 40.4133, -12.2494,
3.3102

■ 43.1425, -14.8863,
3.8593

■ 45.9264, -17.4898,
4.4449

Harmonies

Analogous

The Analogous color harmony consists of three colors that are next to each other on the color wheel.



23.4773, 6.3681, -3.1375



23.4768, 7.6891, 1.1902



23.4773, 6.4711, 4.8480

Triad

The Triadic color harmony groups three colors that are evenly spaced from another and form a triangle on the color wheel.



23.4773, 7.6882, 1.1906



23.4773, -5.2089, 7.1974



23.4773, -5.3566, -6.6318

Complementary

The Complementary color scheme is a pair of colors which are on the opposite of each other on the color wheel.



23.4768, 7.6891, 1.1902



28.5229, -9.1948, 2.4314

Split Complementary

Split-complementary colors differ from the complementary color scheme. The scheme consists of three colors, the original color and two neighbors of the complement color.



23.4773, -8.0936, -2.9592



23.4768, 7.6891, 1.1902



23.4773, -8.0128, 4.9737

Square

The Square scheme is like the rectangle color scheme, but the four colors are evenly spaced on the color wheel.



23.4773, 7.6882, 1.1906



23.4773, -1.1623, 7.9115



23.4773, -9.0303, 1.3649



23.4773, -1.3455, -8.1280

Rectangle

The Rectangle color scheme consists of four colors that form a rectangle on the color wheel.



23.4768, 7.6891, 1.1902



23.4773, 4.4316, 6.5403



23.4773, -9.0303, 1.3649



23.4773, -6.4452, -5.5815

Sweetspot

The Sweet Spot groups the original color and five complimentary colors.



23.4773, 7.6882, 1.1906



37.4200, 1.4101, 1.8672



23.2714, 8.1934, -7.9477



18.3426, 0.8746, 0.9091



69.0652, -3.6851, 3.7524



19.9203, -1.0629, 1.0823

Same Dimension

The Same Dimension uses a secret algorithm to generate beautiful new colors.



23.4773, 7.6882, 1.1906



28.9759, 13.3653, 1.6751



24.5082, 4.3310, 5.1671



14.5892, 0.4698, 0.7309



17.9856, 31.3725, 7.1907



42.4618, 73.7437, 19.4801

Inverse Universe

The Inverse Universe completely reimagines the original color for something new.



23.4773, 7.6882, 1.1906



28.9759, 13.3653, 1.6751



27.2533, -5.7996, -2.4617



14.5892, 0.4698, 0.7309



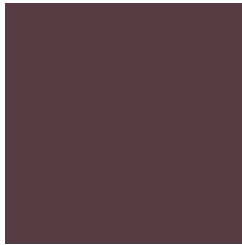
17.9856, 31.3725, 7.1907



42.4618, 73.7437, 19.4801

Previews

White Background



This preview shows how the HunterLab color 23.4768, 7.6891, 1.1902 looks on a white background.

Color Contrast Check

Large Text (above 18pt) WCAG AA ✓ Pass

Any Text WCAG AA ✓ Pass

Large Text (above 18pt) WCAG AAA ✓ Pass

Any Text WCAG AAA ✓ Pass

Black Background



Color Contrast Check

Large Text (above 18pt) WCAG AA × Fail

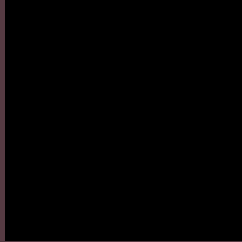
Any Text WCAG AA × Fail

Large Text (above 18pt) WCAG AAA × Fail

Any Text WCAG AAA × Fail

If you want to check with other color combinations, try the [Color Contrast Checker](#).

HunterLab 23.4768, 7.6891, 1.1902 Background



This preview shows how black text looks on a background with the HunterLab color 23.4768, 7.6891, 1.1902.



This preview shows how white text looks on a background with the HunterLab color 23.4768, 7.6891,

Color Blindness Simulation

Color vision deficiency is a very complex topic, and I could not describe the different causes any better than Wikipedia does, so if you want to learn more, you should check out their [article about color blindness](#).

Dichromacy



Original Color

23.4768, 7.6891, 1.1902

Protanopia

23.5471, -0.2702, -0.5051

Deuteranopia

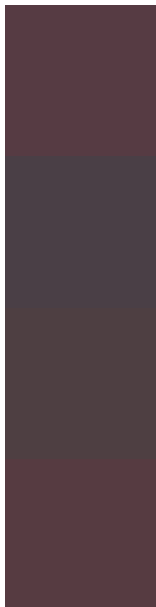
23.6440, 1.0609, 1.6631



Tritanopia

23.4020, 7.3071, 2.2592

Trichromacy



Original Color

23.4768, 7.6891, 1.1902

Protanomaly

23.3518, 2.7587, -0.2743

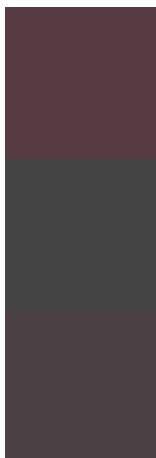
Deuteranomaly

23.5967, 3.3577, 1.6482

Tritanomaly

23.4265, 7.4325, 1.9084

Monochromacy



Original Color

23.4768, 7.6891, 1.1902

Achromatopsia

24.0428, -1.2829, 1.3063

Achromatomaly

23.8617, 1.8939, 1.1480

CSS Examples

Text

The CSS property to change the color of the text to HunterLab 23.4768, 7.6891, 1.1902 is called "color". The color property can be set on classes, ids or directly on the HTML element.

This example shows how text in the color `rgb(86, 59, 67)` looks like.

```
.text, #text, p{  
    color:rgb(86, 59, 67)  
}
```

If you want to add a text shadow in that color use the text-shadow property, you can generate a text shadow directly with our [CSS Text Shadow Generator](#).

Here you see how black text with a 4 pixel rgb(86, 59, 67) colored shadow looks like.

```
.shadow{ text-shadow: 4px 4px 2px rgb(86, 59, 67) }
```

Border

The CSS property to change the border of an element to HunterLab 23.4768, 7.6891, 1.1902 is called "border". The border property can be set on classes, ids or directly on the HTML element.

This example shows the color as border, it can be applied via the CSS property "border" or "border-color".

```
.border, #border, table{ border:4px solid rgb(86, 59, 67) }
```


If only the border color should be changed use the property `border-color`.

```
.border{ border-color:rgb(86, 59, 67) }
```

If you want to add a box shadow in that color use:

Here you see how a box with a 4 pixel `rgb(86, 59, 67)` colored shadow looks like.

```
.boxshadow{ -moz-box-shadow:4px 4px 4px  
4px rgb(86, 59, 67); -webkit-box-  
shadow:4px 4px 4px 4px rgb(86, 59, 67);  
box-shadow:4px 4px 4px 4px rgb(86, 59, 67)  
}
```

Background

The CSS property to change the background color of an element to HunterLab 23.4768, 7.6891, 1.1902 is called "background". The background property can be set on classes, ids or directly on the HTML element.

```
.background, #background, body{  
background: rgb(86, 59, 67) }
```

If only the background color should be changed can be used:

```
.background{ background-color: rgb(86, 59,  
67) }
```

This example shows the color as background, it is applied via the CSS property "background".

To optimize and compress your CSS code, you can use our [online CSS compressor and optimizer](#) based on csstidy. If you want to create a linear or radial gradient as background or border, check our [CSS Gradient Generator](#).

Hey! You found this booklet interesting? Support Converting Colors with the new Membership Option!

The pro membership hides all ads, plus gives you double the colors in the color bucket, and more awesome pro features!

[Learn more, Memberships starting at \\$2.50/m!](#)

**Follow me
on Twitter!**

@ConvertingColor