

Converting Colors

HunterLab(23.6818, 2.0789,
8.0738)

Have a look what the booklet for
HunterLab(23.6818, 2.0789, 8.0738)
contains.

HunterLab(23.7863, 1.9456, 8.2483)	3
<i>Conversions</i>	4
<i>Details</i>	6
<i>Harmonies</i>	12
<i>Previews</i>	24
<i>Color Blindness Simulation</i>	28
<i>CSS Examples</i>	31

Color

**HunterLab(23.7863, 1.9456,
8.2483)**

Conversions

Conversions Part 1

Format	Color
Hex	52402E
RGB	82, 64, 46
RGB Percent	32%, 25%, 18%
CMY	0.6784, 0.7490, 0.8196
CMYK	0.00, 0.22, 0.44, 0.68
HSL	30°, 28%, 25%
HSV	30°, 44%, 32%
XYZ	5.8062, 5.6579, 3.3708
YIQ	67.3300, 16.5060, -1.7820

Conversions

Conversions Part 2

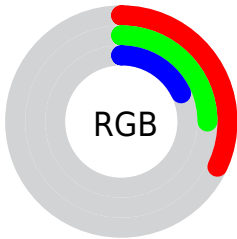
Format	Color
R_{YB}	82, 82, 46
Decimal	5390382
CIE Lab	28.53, 4.97, 13.98
CIE LCh	29, 14.838, 70.439
Yxy	5.6581, 0.3914, 0.3814
Android (android.graphics.Color)	4283580462 (0xFF52402E)
YUV	67.3300, -10.5157, 12.8656
Hunter-Lab	23.7863, 1.9456, 8.2483

Details

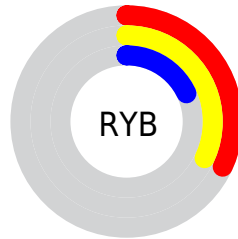
The HunterLab color **23.7863, 1.9456, 8.2483** is a dark color, and the websafe version is hex **333333**. A complement of this color would be **22.0378, -2.2549, -7.9362**, and the grayscale version is **23.8394, -1.2720, 1.2952**.

A 20% lighter version of the original color is **41.5531, 1.3473, 11.1812**, and **9.8343, 1.8457, 6.0922** is the 20% darker color. If you saturate the color by 10%, you get **22.7025, 3.0201, 9.2970**, and if you desaturate by 10%, it is **24.9171, 0.9788, 7.0076**.

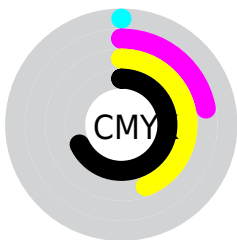
Distribution



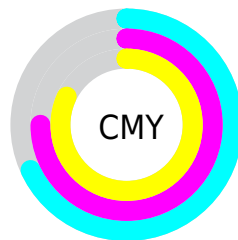
- Red (32%)
- Green (25%)
- Blue (18%)



- Red (32%)
- Yellow (32%)
- Blue (18%)



- Cyan (0%)
- Magenta (22%)
- Yellow (44%)
- Black (68%)



- Cyan (68%)
- Magenta (75%)
- Yellow (82%)

Brightness & Saturation Gradients

These gradients show how the HunterLab color 23.7863, 1.9456, 8.2483 changes by changing the brightness by 10 percent. The first figure shows a shift by +10% for each color and the second figure -10%.

Similar to the brightness gradients but the following saturation gradients show a change of the HunterLab color 23.7863, 1.9456, 8.2483 by changing the saturation by 10% instead.

■ 23.7863, 1.9456,
8.2483

■ 23.7863, 1.9456,
8.2483

■ 124.8983, -1.1781,
20.5176

■ 16.2430, 1.9848,
6.6723

■ 41.4941, 1.6234,
11.1410

■ 9.7262, 1.9171,
6.4968

■ 51.5035, 1.3658,
12.5179

0.0000, NaN, NaN

0.0000, NaN, NaN

■ 62.2090, 1.0535,
13.8704

0.0000, NaN, NaN

■ 73.5680, 0.6917,
15.2080

0.0000, NaN, NaN

■ 85.5448, 0.2847,
16.5373

0.0000, NaN, NaN

0.0000, NaN, NaN

■ 98.1091, -0.1644,

17.8632

0.0000, NaN, NaN

111.2347, -0.6528,
19.1890

■ 23.7863, 1.9456,
8.2483

■ 23.7863, 1.9456,
8.2483

■ 22.7025, 3.0201,
9.2970

■ 24.9171, 0.9788,
7.0076

■ 21.6676, 4.2080,
10.1369

■ 26.0900, 0.1178,
5.5903

■ 20.6860, 5.5087,
10.7533

■ 27.3022, -0.6440,
4.0122

■ 19.7613, 6.9185,
11.1351

■ 28.5510, -1.3128,
2.2878

■ 18.8931, 8.4079,
11.3384

■ 29.8337, -1.8950,
0.4304

■ 18.3849, 9.3111,
11.4917

■ 31.1480, -2.3969,
-1.5479

■ 32.4917, -2.8245,
-3.6364

■ 33.8630, -3.1836,
-5.8254

■ 35.2599, -3.4796,
-8.1065

Harmonies

Analogous

The Analogous color harmony consists of three colors that are next to each other on the color wheel.



23.7869, 6.2795, 6.3756



23.7863, 1.9456, 8.2483



23.7869, -2.9424, 8.4914

Triad

The Triadic color harmony groups three colors that are evenly spaced from another and form a triangle on the color wheel.



23.7869, 1.9447, 8.2486



23.7869, -9.7921, -0.3753



23.7869, 5.1091, -6.5263

Complementary

The Complementary color scheme is a pair of colors which are on the opposite of each other on the color wheel.



23.7863, 1.9456, 8.2483



22.0378, -2.2549, -7.9362

Split Complementary

Split-complementary colors differ from the complementary color scheme. The scheme consists of three colors, the original color and two neighbors of the complement color.



23.7869, 0.4490, -9.2296



23.7863, 1.9456, 8.2483



23.7869, -7.9824, -5.2337

Square

The Square scheme is like the rectangle color scheme, but the four colors are evenly spaced on the color wheel.



23.7869, 1.9447, 8.2486



23.7869, -9.4621, 4.0868



23.7869, -4.3234, -8.7140



23.7869, 8.2057, -1.8829

Rectangle

The Rectangle color scheme consists of four colors that form a rectangle on the color wheel.



23.7863, 1.9456, 8.2483



23.7869, -5.8284, 7.7624



23.7869, -4.3234, -8.7140



23.7869, 3.6587, -7.7305

Sweetspot

The Sweet Spot groups the original color and five complimentary colors.



23.7869, 1.9447, 8.2486



36.1477, -0.8924, 5.2050



20.2929, 11.8293, -1.4603



17.8331, -0.3778, 2.7340



67.9972, -3.6282, 3.6944



19.0543, -1.0167, 1.0353

Same Dimension

The Same Dimension uses a secret algorithm to generate beautiful new colors.



23.7869, 1.9447, 8.2486



29.8615, 4.1373, 12.4056



28.3296, -5.5334, 11.9500



14.2635, -0.5115, 1.6002



23.3607, 12.7096, 14.6173



54.4645, 34.2897, 34.1611

Inverse Universe

The Inverse Universe completely reimagines the original color for something new.



22.0378, -2.2549, -7.9362



27.0209, -2.5862, -13.9771



17.7315, 5.4795, -15.6700



14.0789, -0.9629, -0.0991



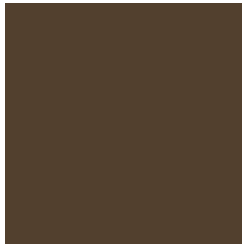
18.6836, 3.2908, -30.4568



42.8048, 11.9102, -79.2129

Previews

White Background



This preview shows how the HunterLab color 23.7863, 1.9456, 8.2483 looks on a white background.

Color Contrast Check

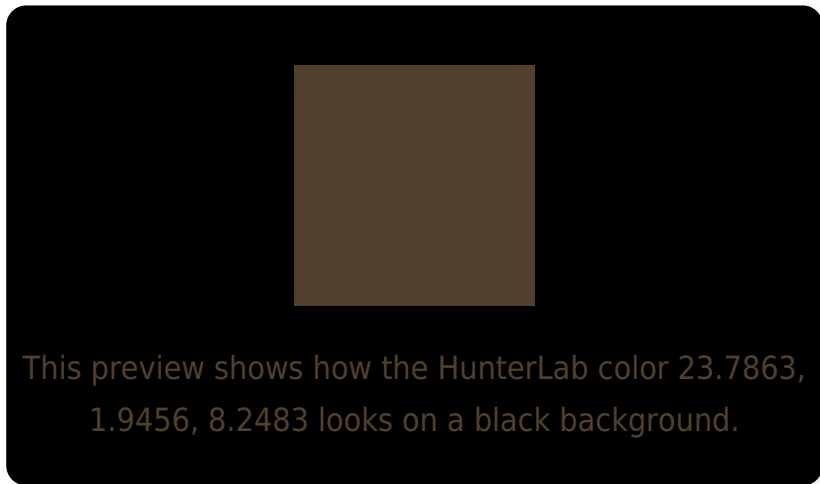
Large Text (above 18pt) WCAG AA ✓ Pass

Any Text WCAG AA ✓ Pass

Large Text (above 18pt) WCAG AAA ✓ Pass

Any Text WCAG AAA ✓ Pass

Black Background



Color Contrast Check

Large Text (above 18pt) WCAG AA × Fail

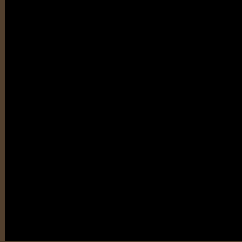
Any Text WCAG AA × Fail

Large Text (above 18pt) WCAG AAA × Fail

Any Text WCAG AAA × Fail

If you want to check with other color combinations, try the [Color Contrast Checker](#).

HunterLab 23.7863, 1.9456, 8.2483 Background



This preview shows how black text looks on a background with the HunterLab color 23.7863, 1.9456, 8.2483.

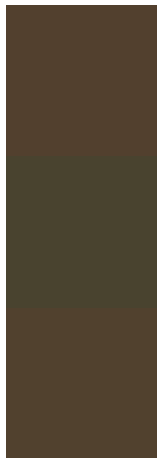


This preview shows how white text looks on a background with the HunterLab color 23.7863, 1.9456,

Color Blindness Simulation

Color vision deficiency is a very complex topic, and I could not describe the different causes any better than Wikipedia does, so if you want to learn more, you should check out their [article about color blindness](#).

Dichromacy



Original Color

23.7863, 1.9456, 8.2483

Protanopia

23.7403, -1.9369, 7.8783

Deuteranopia

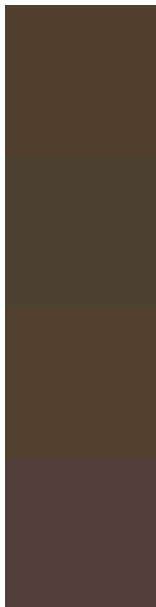
23.9315, 1.2075, 8.3639



Tritanopia

23.6974, 6.0465, 1.8123

Trichromacy



Original Color

23.7863, 1.9456, 8.2483

Protanomaly

23.7448, -0.6451, 7.9050

Deuteranomaly

23.9315, 1.2075, 8.3639

Tritanomaly

23.6644, 4.4436, 4.2929

Monochromacy



Original Color

23.7863, 1.9456, 8.2483

Achromatopsia

23.6915, -1.2641, 1.2872

Achromatomaly

23.6430, -0.5299, 4.1833

CSS Examples

Text

The CSS property to change the color of the text to HunterLab 23.7863, 1.9456, 8.2483 is called "color". The color property can be set on classes, ids or directly on the HTML element.

This example shows how text in the color `rgb(82, 64, 46)` looks like.

```
.text, #text, p{  
    color:rgb(82, 64, 46)  
}
```

If you want to add a text shadow in that color use the text-shadow property, you can generate a text shadow directly with our [CSS Text Shadow Generator](#).

Here you see how black text with a 4 pixel rgb(82, 64, 46) colored shadow looks like.

```
.shadow{ text-shadow: 4px 4px 2px rgb(82, 64, 46) }
```

Border

The CSS property to change the border of an element to HunterLab 23.7863, 1.9456, 8.2483 is called "border".

The border property can be set on classes, ids or directly on the HTML element.

This example shows the color as border, it can be applied via the CSS property "border" or "border-color".

```
.border, #border, table{ border:4px solid rgb(82, 64, 46) }
```


If only the border color should be changed use the property `border-color`.

```
.border{ border-color:rgb(82, 64, 46) }
```

If you want to add a box shadow in that color use:

Here you see how a box with a 4 pixel `rgb(82, 64, 46)` colored shadow looks like.

```
.boxshadow{ -moz-box-shadow:4px 4px 4px  
4px rgb(82, 64, 46); -webkit-box-  
shadow:4px 4px 4px 4px rgb(82, 64, 46);  
box-shadow:4px 4px 4px 4px rgb(82, 64, 46)  
}
```

Background

The CSS property to change the background color of an element to HunterLab 23.7863, 1.9456, 8.2483 is called "background". The background property can be set on classes, ids or directly on the HTML element.

```
.background, #background, body{  
background: rgb(82, 64, 46) }
```

If only the background color should be changed can be used:

```
.background{ background-color: rgb(82, 64,  
46) }
```

This example shows the color as background, it is applied via the CSS property "background".

To optimize and compress your CSS code, you can use our [online CSS compressor and optimizer](#) based on csstidy. If you want to create a linear or radial gradient as background or border, check our [CSS Gradient Generator](#).

Hey! You found this booklet interesting? Support Converting Colors with the new Membership Option!

The pro membership hides all ads, plus gives you double the colors in the color bucket, and more awesome pro features!

[Learn more, Memberships starting at \\$2.50/m!](#)

**Follow me
on Twitter!**

@ConvertingColor