

Converting Colors

HunterLab(23.6881, 1.7930,
6.7888)

Have a look what the booklet for
HunterLab(23.6881, 1.7930, 6.7888)
contains.

HunterLab(23.6881, 1.7930, 6.7888)	3
<i>Conversions</i>	4
<i>Details</i>	6
<i>Harmonies</i>	12
<i>Previews</i>	24
<i>Color Blindness Simulation</i>	28
<i>CSS Examples</i>	31

Color

**HunterLab(23.6881, 1.7930,
6.7888)**

Conversions

Conversions Part 1

Format	Color
Hex	504033
RGB	80, 64, 51
RGB Percent	31%, 25%, 20%
CMY	0.6863, 0.7490, 0.8000
CMYK	0.00, 0.20, 0.36, 0.69
HSL	27°, 22%, 26%
HSV	27°, 36%, 31%
XYZ	5.7392, 5.6113, 3.9125
YIQ	67.3020, 13.7090, -0.6510

Conversions

Conversions Part 2

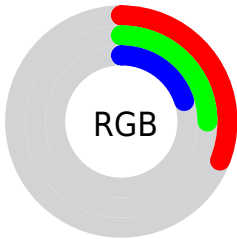
Format	Color
R_{YB}	80, 75, 51
Decimal	5259315
CIE Lab	28.41, 4.74, 10.57
CIE LCh	28, 11.584, 65.868
Yxy	5.6115, 0.3760, 0.3676
Android (android.graphics.Color)	4283449395 (0xFF504033)
YUV	67.3020, -8.0369, 11.1361
Hunter-Lab	23.6881, 1.7930, 6.7888

Details

The HunterLab color **23.6881, 1.7930, 6.7888** is a dark color, and the websafe version is hex **333333**. A complement of this color would be **23.0154, -2.8926, -5.4197**, and the grayscale version is **23.8218, -1.2711, 1.2943**.

A 20% lighter version of the original color is **41.4695, 1.2815, 9.4067**, and **9.7062, 1.5413, 5.1308** is the 20% darker color. If you saturate the color by 10%, you get **22.5138, 2.9288, 7.9052**, and if you desaturate by 10%, it is **24.9117, 0.7580, 5.5159**.

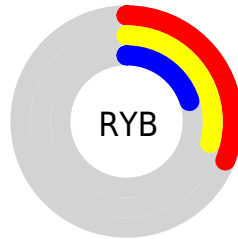
Distribution



 Red (31%)

 Green (25%)

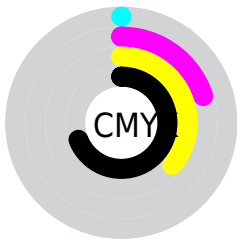
 Blue (20%)



 Red (31%)

 Yellow (29%)

 Blue (20%)

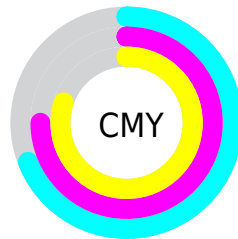


 Cyan (0%)

 Magenta (20%)

 Yellow (36%)

 Black (69%)



 Cyan (69%)

 Magenta (75%)

 Yellow (80%)

Brightness & Saturation Gradients

These gradients show how the HunterLab color 23.6881, 1.7930, 6.7888 changes by changing the brightness by 10 percent. The first figure shows a shift by +10% for each color and the second figure -10%.

Similar to the brightness gradients but the following saturation gradients show a change of the HunterLab color 23.6881, 1.7930, 6.7888 by changing the saturation by 10% instead.

■ 23.6881, 1.7930,
6.7888

■ 23.6881, 1.7930,
6.7888

■ 124.7276, -1.4299,
17.3133

■ 16.1565, 1.8475,
5.5204

■ 41.3759, 1.4441,
9.1771

■ 9.6533, 1.7970,
5.0700

■ 51.3764, 1.1744,
10.3383

0.0000, NaN, NaN

■ 62.0736, 0.8508,
11.4922

0.0000, NaN, NaN

■ 73.4248, 0.4784,
12.6450

0.0000, NaN, NaN

■ 85.3943, 0.0611,
13.8009

0.0000, NaN, NaN

■ 97.9516, -0.3978,

0.0000, NaN, NaN

14.9630

0.0000, NaN, NaN

111.0704, -0.8955,
16.1332

■ 23.6881, 1.7930,
6.7888

■ 23.6881, 1.7930,
6.7888

■ 22.5138, 2.9288,
7.9052

■ 24.9117, 0.7580,
5.5159

■ 21.3914, 4.1722,
8.8469

■ 26.1788, -0.1790,
4.1015

■ 20.3262, 5.5240,
9.5969

■ 27.4866, -1.0254,
2.5604

■ 19.3232, 6.9821,
10.1387

■ 28.8318, -1.7877,
0.9057

■ 18.3875, 8.5392,
10.4589

■ 30.2114, -2.4726,
-0.8512

■ 17.5155, 10.1386,
10.6788

■ 31.6231, -3.0863,
-2.7002

■ 17.2024, 10.7287,
10.7878

■ 33.0643, -3.6347,
-4.6326

■ 34.5333, -4.1235,
-6.6406

■ 36.0280, -4.5577,
-8.7176

Harmonies

Analogous

The Analogous color harmony consists of three colors that are next to each other on the color wheel.



23.6887, 4.9419, 5.0062



23.6881, 1.7930, 6.7888



23.6887, -2.0065, 7.2067

Triad

The Triadic color harmony groups three colors that are evenly spaced from another and form a triangle on the color wheel.



23.6887, 1.7921, 6.7891



23.6887, -8.0949, 0.5689



23.6887, 3.1629, -5.0526

Complementary

The Complementary color scheme is a pair of colors which are on the opposite of each other on the color wheel.



23.6881, 1.7930, 6.7888



23.0154, -2.8926, -5.4197

Split Complementary

Split-complementary colors differ from the complementary color scheme. The scheme consists of three colors, the original color and two neighbors of the complement color.



23.6887, -0.5147, -6.7058



23.6881, 1.7930, 6.7888



23.6887, -6.8925, -3.1482

Square

The Square scheme is like the rectangle color scheme, but the four colors are evenly spaced on the color wheel.



23.6887, 1.7921, 6.7891



23.6887, -7.5627, 3.9551



23.6887, -4.1750, -5.9592



23.6887, 5.7676, -1.7273

Rectangle

The Rectangle color scheme consists of four colors that form a rectangle on the color wheel.



23.6881, 1.7930, 6.7888



23.6887, -4.3651, 6.7230



23.6887, -4.1750, -5.9592



23.6887, 2.0027, -5.8443

Sweetspot

The Sweet Spot groups the original color and five complimentary colors.



23.6887, 1.7921, 6.7891



35.4135, -0.7932, 4.4504



21.1746, 9.4631, -1.8471



17.9729, -0.3634, 2.3397



67.9972, -3.6282, 3.6944



19.0543, -1.0167, 1.0353

Same Dimension

The Same Dimension uses a secret algorithm to generate beautiful new colors.



23.6887, 1.7921, 6.7891



29.9979, 3.6056, 10.2093



27.2080, -4.0850, 9.8688



14.2153, -0.4304, 1.5475



22.3586, 15.0363, 14.0405



52.0312, 40.1640, 32.7645

Inverse Universe

The Inverse Universe completely reimagines the original color for something new.



23.0154, -2.8926, -5.4197



28.9149, -3.8895, -9.4069



19.5529, 3.0592, -10.9112



14.1279, -1.0434, -0.0400



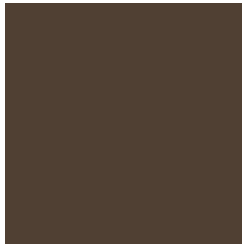
20.0105, 0.8723, -26.8945



46.1200, 5.5729, -69.6761

Previews

White Background



This preview shows how the HunterLab color 23.6881, 1.7930, 6.7888 looks on a white background.

Color Contrast Check

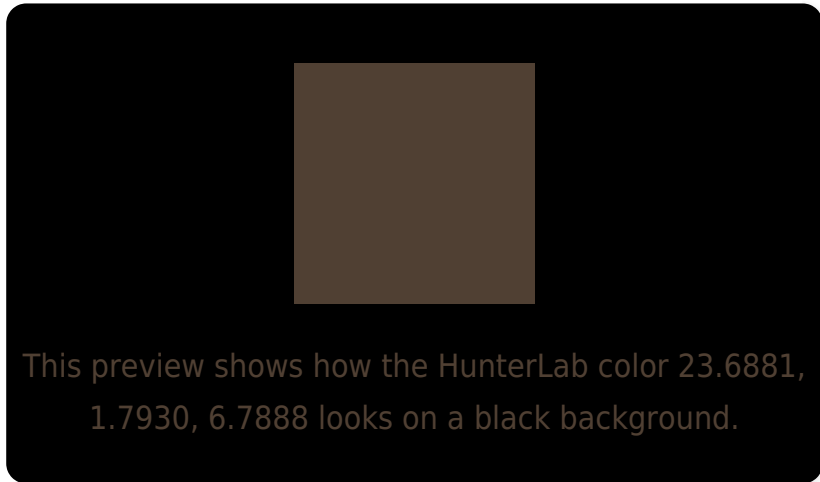
Large Text (above 18pt) WCAG AA ✓ Pass

Any Text WCAG AA ✓ Pass

Large Text (above 18pt) WCAG AAA ✓ Pass

Any Text WCAG AAA ✓ Pass

Black Background



Color Contrast Check

Large Text (above 18pt) WCAG AA × Fail

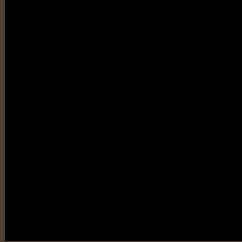
Any Text WCAG AA × Fail

Large Text (above 18pt) WCAG AAA × Fail

Any Text WCAG AAA × Fail

If you want to check with other color combinations, try the [Color Contrast Checker](#).

HunterLab 23.6881, 1.7930, 6.7888 Background



This preview shows how black text looks on a background with the HunterLab color 23.6881, 1.7930, 6.7888.

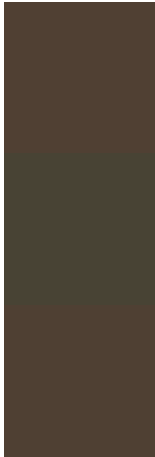


This preview shows how white text looks on a background with the HunterLab color 23.6881, 1.7930,

Color Blindness Simulation

Color vision deficiency is a very complex topic, and I could not describe the different causes any better than Wikipedia does, so if you want to learn more, you should check out their [article about color blindness](#).

Dichromacy



Original Color

23.6881, 1.7930, 6.7888

Protanopia

23.7486, -1.7280, 6.4926

Deuteranopia

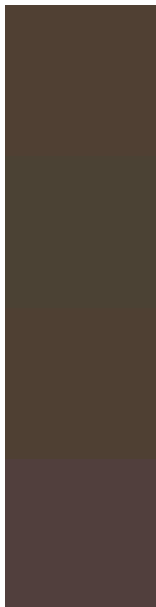
23.5968, 1.4864, 6.6968



Tritanopia

23.7578, 5.1223, 1.4770

Trichromacy



Original Color

23.6881, 1.7930, 6.7888

Protanomaly

23.7491, -0.4504, 6.5155

Deuteranomaly

23.5968, 1.4864, 6.6968

Tritanomaly

23.7513, 3.6261, 3.6782

Monochromacy



Original Color

23.6881, 1.7930, 6.7888

Achromatopsia

23.6915, -1.2641, 1.2872

Achromatomaly

23.6877, -0.2867, 3.5408

CSS Examples

Text

The CSS property to change the color of the text to HunterLab 23.6881, 1.7930, 6.7888 is called "color". The color property can be set on classes, ids or directly on the HTML element.

This example shows how text in the color `rgb(80, 64, 51)` looks like.

```
.text, #text, p{  
    color:rgb(80, 64, 51)  
}
```

If you want to add a text shadow in that color use the text-shadow property, you can generate a text shadow directly with our [CSS Text Shadow Generator](#).

Here you see how black text with a 4 pixel rgb(80, 64, 51) colored shadow looks like.

```
.shadow{ text-shadow: 4px 4px 2px rgb(80, 64, 51) }
```

Border

The CSS property to change the border of an element to HunterLab 23.6881, 1.7930, 6.7888 is called "border". The border property can be set on classes, ids or directly on the HTML element.

This example shows the color as border, it can be applied via the CSS property "border" or "border-color".

```
.border, #border, table{ border:4px solid rgb(80, 64, 51) }
```


If only the border color should be changed use the property `border-color`.

```
.border{ border-color:rgb(80, 64, 51) }
```

If you want to add a box shadow in that color use:

Here you see how a box with a 4 pixel `rgb(80, 64, 51)` colored shadow looks like.

```
.boxshadow{ -moz-box-shadow:4px 4px 4px  
4px rgb(80, 64, 51); -webkit-box-  
shadow:4px 4px 4px 4px rgb(80, 64, 51);  
box-shadow:4px 4px 4px 4px rgb(80, 64, 51)  
}
```

Background

The CSS property to change the background color of an element to HunterLab 23.6881, 1.7930, 6.7888 is called "background". The background property can be set on classes, ids or directly on the HTML element.

```
.background, #background, body{  
background: rgb(80, 64, 51) }
```

If only the background color should be changed can be used:

```
.background{ background-color: rgb(80, 64,  
51) }
```

This example shows the color as background, it is applied via the CSS property "background".

To optimize and compress your CSS code, you can use our [online CSS compressor and optimizer](#) based on csstidy. If you want to create a linear or radial gradient as background or border, check our [CSS Gradient Generator](#).

Hey! You found this booklet interesting? Support Converting Colors with the new Membership Option!

The pro membership hides all ads, plus gives you double the colors in the color bucket, and more awesome pro features!

[Learn more, Memberships starting at \\$2.50/m!](#)

**Follow me
on Twitter!**

@ConvertingColor