

Converting Colors

HunterLab(23.6885, 10.1090,
4.7546)

Have a look what the booklet for
HunterLab(23.6885, 10.1090,
4.7546) contains.

HunterLab(23.6885, 10.1090, 4.7546)	3
<i>Conversions</i>	4
<i>Details</i>	6
<i>Harmonies</i>	12
<i>Previews</i>	24
<i>Color Blindness Simulation</i>	28
<i>CSS Examples</i>	31

Color

**HunterLab(23.6885, 10.1090,
4.7546)**

Conversions

Conversions Part 1

Format	Color
Hex	5E393A
RGB	94, 57, 58
RGB Percent	37%, 22%, 23%
CMY	0.6314, 0.7765, 0.7725
CMYK	0.00, 0.39, 0.38, 0.63
HSL	358°, 25%, 30%
HSV	358°, 39%, 37%
XYZ	6.8430, 5.6115, 4.7255
YIQ	68.1770, 21.7310, 8.1550

Conversions

Conversions Part 2

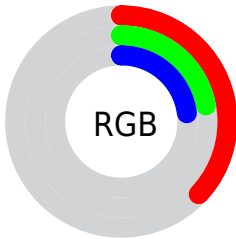
Format	Color
R_{YB}	94, 57, 58
Decimal	6175034
CIE Lab	28.41, 16.58, 6.29
CIE LCh	28, 17.731, 20.764
Yxy	5.6117, 0.3983, 0.3266
Android (android.graphics.Color)	4284365114 (0xFF5E393A)
YUV	68.1770, -5.0173, 22.6468
Hunter-Lab	23.6885, 10.1090, 4.7546

Details

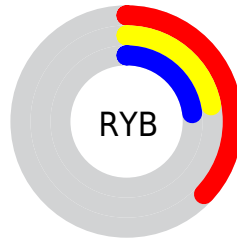
The HunterLab color **23.6885, 10.1090, 4.7546** is a dark color, and the websafe version is hex **663333**. A complement of this color would be **31.0898, -10.3926, -0.7750**, and the grayscale version is **24.1173, -1.2868, 1.3103**.

A 20% lighter version of the original color is **41.5139, 11.0044, 6.6861**, and **9.6406, 8.4947, 3.3098** is the 20% darker color. If you saturate the color by 10%, you get **21.6374, 13.3497, 5.6486**, and if you desaturate by 10%, it is **25.9430, 6.9292, 3.9184**.

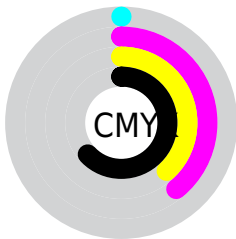
Distribution



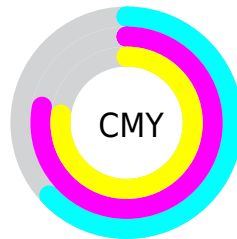
- Red (37%)
- Green (22%)
- Blue (23%)



- Red (37%)
- Yellow (22%)
- Blue (23%)



- Cyan (0%)
- Magenta (39%)
- Yellow (38%)
- Black (63%)



- Cyan (63%)
- Magenta (78%)
- Yellow (77%)

Brightness & Saturation Gradients

These gradients show how the HunterLab color 23.6885, 10.1090, 4.7546 changes by changing the brightness by 10 percent. The first figure shows a shift by +10% for each color and the second figure -10%.

Similar to the brightness gradients but the following saturation gradients show a change of the HunterLab color 23.6885, 10.1090, 4.7546 by changing the saturation by 10% instead.

■ 23.6885, 10.1090,
4.7546

■ 23.6885, 10.1090,
4.7546

■ 124.7283, 12.0298,
13.1653

■ 16.1569, 9.3948,
3.8559

■ 41.3764, 11.1320,
6.5361

■ 9.6536, 8.5104,
3.2298

■ 51.3769, 11.4837,
7.4368

0.0000, INF, NaN

0.0000, NaN, NaN

■ 62.0742, 11.7472,
8.3502

0.0000, NaN, NaN

■ 73.4254, 11.9326,
9.2788

0.0000, NaN, NaN

■ 85.3949, 12.0477,
10.2238

0.0000, NaN, NaN

0.0000, NaN, NaN

■ 97.9523, 12.0989,

11.1863

0.0000, NaN, NaN

111.0711, 12.0915,
12.1667

■ 23.6885, 10.1090,
4.7546

■ 23.6885, 10.1090,
4.7546

■ 21.6374, 13.3497,
5.6486

■ 25.9430, 6.9292,
3.9184

■ 19.8246, 16.5736,
6.5798

■ 28.3679, 3.8520,
3.1448

■ 18.2905, 19.6395,
7.5099

■ 30.9380, 0.8882,
2.4328

■ 17.0730, 22.3464,
8.3772

■ 33.6325, -1.9649,
1.7773

■ 16.1989, 24.4640,
9.1052

■ 36.4348, -4.7169,
1.1717

■ 15.4907, 26.3554,
9.6636

■ 39.3314, -7.3799,
0.6096

■ 15.4443, 26.4847,
9.7009

■ 42.3114, -9.9663,
0.0849

■ 45.3660, -12.4878,
-0.4079

■ 48.4878, -14.9547,
-0.8734

Harmonies

Analogous

The Analogous color harmony consists of three colors that are next to each other on the color wheel.



23.6891, 10.7964, -0.4799



23.6885, 10.1090, 4.7546



23.6891, 6.2206, 8.1304

Triad

The Triadic color harmony groups three colors that are evenly spaced from another and form a triangle on the color wheel.



23.6891, 10.1079, 4.7550



23.6891, -9.3096, 7.0730



23.6891, -3.0313, -11.7758

Complementary

The Complementary color scheme is a pair of colors which are on the opposite of each other on the color wheel.



23.6885, 10.1090, 4.7546



31.0898, -10.3926, -0.7750

Split Complementary

Split-complementary colors differ from the complementary color scheme. The scheme consists of three colors, the original color and two neighbors of the complement color.



23.6891, -7.9234, -8.5032



23.6885, 10.1090, 4.7546



23.6891, -11.3113, 2.9320

Square

The Square scheme is like the rectangle color scheme, but the four colors are evenly spaced on the color wheel.



23.6891, 10.1079, 4.7550



23.6891, -5.0959, 9.2276



23.6891, -10.8295, -2.7945



23.6891, 2.8254, -10.9504

Rectangle

The Rectangle color scheme consists of four colors that form a rectangle on the color wheel.



23.6885, 10.1090, 4.7546



23.6891, 2.5276, 9.2869



23.6891, -10.8295, -2.7945



23.6891, -4.8336, -11.0940

Sweetspot

The Sweet Spot groups the original color and five complimentary colors.



23.6891, 10.1079, 4.7550



39.8953, 2.3415, 3.4950



24.5961, 14.8282, -10.1114



19.4088, 1.2829, 1.7434



71.2094, -3.7996, 3.8689



21.6712, -1.1563, 1.1774

Same Dimension

The Same Dimension uses a secret algorithm to generate beautiful new colors.



23.6891, 10.1079, 4.7550



28.8637, 17.2782, 7.3656



27.5837, 2.3428, 8.7168



15.3267, 0.3583, 1.1808



18.1633, 31.1410, 11.4601



42.4787, 72.7790, 27.1929

Inverse Universe

The Inverse Universe completely reimagines the original color for something new.



23.6891, 10.1079, 4.7550



28.8637, 17.2782, 7.3656



26.3606, -3.1779, -7.6307



15.3267, 0.3583, 1.1808



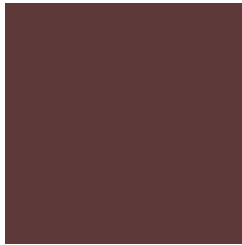
18.1633, 31.1410, 11.4601



42.4787, 72.7790, 27.1929

Previews

White Background



This preview shows how the HunterLab color 23.6885, 10.1090, 4.7546 looks on a white background.

Color Contrast Check

Large Text (above 18pt) WCAG AA ✓ Pass

Any Text WCAG AA ✓ Pass

Large Text (above 18pt) WCAG AAA ✓ Pass

Any Text WCAG AAA ✓ Pass

Black Background



This preview shows how the HunterLab color 23.6885, 10.1090, 4.7546 looks on a black background.

Color Contrast Check

Large Text (above 18pt) WCAG AA × Fail

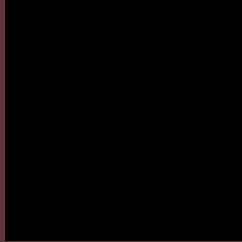
Any Text WCAG AA × Fail

Large Text (above 18pt) WCAG AAA × Fail

Any Text WCAG AAA × Fail

If you want to check with other color combinations, try the [Color Contrast Checker](#).

HunterLab 23.6885, 10.1090, 4.7546 Background



This preview shows how black text looks on a background with the HunterLab color 23.6885, 10.1090, 4.7546.



This preview shows how white text looks on a background with the HunterLab color 23.6885, 10.1090,

Color Blindness Simulation

Color vision deficiency is a very complex topic, and I could not describe the different causes any better than Wikipedia does, so if you want to learn more, you should check out their [article about color blindness](#).

Dichromacy



Original Color

23.6885, 10.1090, 4.7546

Protanopia

23.8229, -1.0030, 2.9581

Deuteranopia

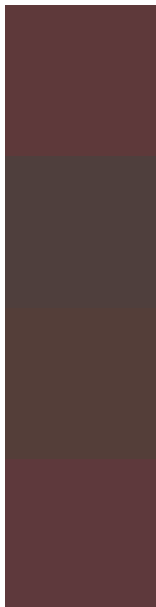
23.8657, 1.3962, 5.1138



Tritanopia

23.7547, 10.4397, 3.8011

Trichromacy



Original Color

23.6885, 10.1090, 4.7546

Protanomaly

23.5674, 3.0218, 3.4682

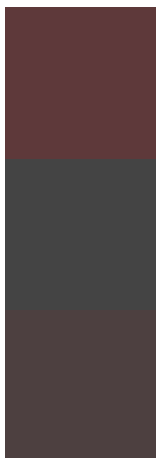
Deuteranomaly

23.7181, 4.5316, 5.0179

Tritanomaly

23.7322, 10.3275, 4.1244

Monochromacy



Original Color

23.6885, 10.1090, 4.7546

Achromatopsia

24.0428, -1.2829, 1.3063

Achromatomaly

23.6954, 2.3709, 2.5058

CSS Examples

Text

The CSS property to change the color of the text to HunterLab 23.6885, 10.1090, 4.7546 is called "color". The color property can be set on classes, ids or directly on the HTML element.

This example shows how text in the color `rgb(94, 57, 58)` looks like.

```
.text, #text, p{  
    color:rgb(94, 57, 58)  
}
```

If you want to add a text shadow in that color use the text-shadow property, you can generate a text shadow directly with our [CSS Text Shadow Generator](#).

Here you see how black text with a 4 pixel rgb(94, 57, 58) colored shadow looks like.

```
.shadow{ text-shadow: 4px 4px 2px rgb(94, 57, 58) }
```

Border

The CSS property to change the border of an element to HunterLab 23.6885, 10.1090, 4.7546 is called "border". The border property can be set on classes, ids or directly on the HTML element.

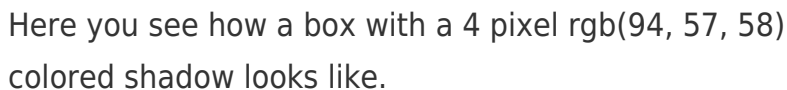
This example shows the color as border, it can be applied via the CSS property "border" or "border-color".

```
.border, #border, table{ border:4px solid rgb(94, 57, 58) }
```


If only the border color should be changed use the property `border-color`.

```
.border{ border-color:rgb(94, 57, 58) }
```

If you want to add a box shadow in that color use:



Here you see how a box with a 4 pixel `rgb(94, 57, 58)` colored shadow looks like.

```
.boxshadow{ -moz-box-shadow:4px 4px 4px  
4px rgb(94, 57, 58); -webkit-box-  
shadow:4px 4px 4px 4px rgb(94, 57, 58);  
box-shadow:4px 4px 4px 4px rgb(94, 57, 58)  
}
```

Background

The CSS property to change the background color of an element to HunterLab 23.6885, 10.1090, 4.7546 is called "background". The background property can be set on classes, ids or directly on the HTML element.

```
.background, #background, body{  
background: rgb(94, 57, 58) }
```

If only the background color should be changed can be used:

```
.background{ background-color: rgb(94, 57,  
58) }
```

This example shows the color as background, it is applied via the CSS property "background".

To optimize and compress your CSS code, you can use our [online CSS compressor and optimizer](#) based on csstidy. If you want to create a linear or radial gradient as background or border, check our [CSS Gradient Generator](#).

Hey! You found this booklet interesting? Support Converting Colors with the new Membership Option!

The pro membership hides all ads, plus gives you double the colors in the color bucket, and more awesome pro features!

[Learn more, Memberships starting at \\$2.50/m!](#)

**Follow me
on Twitter!**

@ConvertingColor