

Converting Colors

HunterLab(23.6932, 1.2460,
3.5623)

Have a look what the booklet for
HunterLab(23.6932, 1.2460, 3.5623)
contains.

HunterLab(23.7782, 1.2757, 3.6660)	3
<i>Conversions</i>	4
<i>Details</i>	6
<i>Harmonies</i>	12
<i>Previews</i>	24
<i>Color Blindness Simulation</i>	28
<i>CSS Examples</i>	31

Color

**HunterLab(23.7782, 1.2757,
3.6660)**

Conversions

Conversions Part 1

Format	Color
Hex	4C413D
RGB	76, 65, 61
RGB Percent	30%, 25%, 24%
CMY	0.7020, 0.7451, 0.7608
CMYK	0.00, 0.14, 0.20, 0.70
HSL	16°, 11%, 27%
HSV	16°, 20%, 30%
XYZ	5.7131, 5.6540, 5.2051
YIQ	67.8330, 7.8400, 1.0880

Conversions

Conversions Part 2

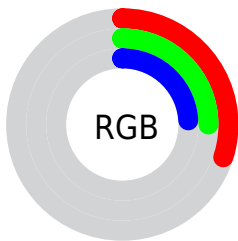
Format	Color
R_{YB}	76, 66, 61
Decimal	4997437
CIE Lab	28.52, 3.95, 4.18
CIE LCh	29, 5.751, 46.575
Yxy	5.6543, 0.3447, 0.3412
Android (android.graphics.Color)	4283187517 (0xFF4C413D)
YUV	67.8330, -3.3687, 7.1625
Hunter-Lab	23.7782, 1.2757, 3.6660

Details

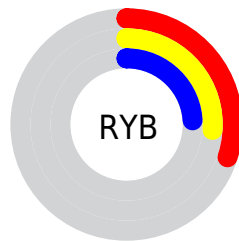
The HunterLab color **23.7782, 1.2757, 3.6660** is a dark color, and the websafe version is hex **333333**. A complement of this color would be **24.7962, -3.4671, -1.1306**, and the grayscale version is **23.9940, -1.2803, 1.3036**.

A 20% lighter version of the original color is **41.5367, 0.6648, 5.3551**, and **9.8330, 1.3011, 2.3670** is the 20% darker color. If you saturate the color by 10%, you get **22.2925, 2.7739, 4.6979**, and if you desaturate by 10%, it is **25.3255, -0.1369, 2.5737**.

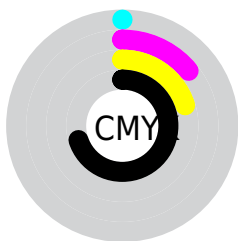
Distribution



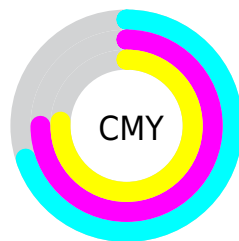
- Red (30%)
- Green (25%)
- Blue (24%)



- Red (30%)
- Yellow (26%)
- Blue (24%)



- Cyan (0%)
- Magenta (14%)
- Yellow (20%)
- Black (70%)



- Cyan (70%)
- Magenta (75%)
- Yellow (76%)

Brightness & Saturation Gradients

These gradients show how the HunterLab color 23.7782, 1.2757, 3.6660 changes by changing the brightness by 10 percent. The first figure shows a shift by +10% for each color and the second figure -10%.

Similar to the brightness gradients but the following saturation gradients show a change of the HunterLab color 23.7782, 1.2757, 3.6660 by changing the saturation by 10% instead.

■ 23.7782, 1.2757,
3.6660

■ 23.7782, 1.2757,
3.6660

■ 124.8842, -2.3067,
11.0757

■ 16.2358, 1.3872,
2.9392

■ 41.4843, 0.8286,
5.1629

■ 9.7201, 1.4013,
2.3188

■ 51.4930, 0.5153,
5.9407

0.0000, NaN, NaN

0.0000, NaN, NaN

■ 62.1978, 0.1507,
6.7403

0.0000, NaN, NaN

■ 73.5561, -0.2605,
7.5623

0.0000, NaN, NaN

■ 85.5324, -0.7146,
8.4070

0.0000, NaN, NaN

0.0000, NaN, NaN

■ 98.0961, -1.2085,

9.2742

0.0000, NaN, NaN

111.2211, -1.7399,
10.1639

■ 23.7782, 1.2757,
3.6660

■ 23.7782, 1.2757,
3.6660

■ 22.2925, 2.7739,
4.6979

■ 25.3255, -0.1369,
2.5737

■ 20.8740, 4.3649,
5.6556

■ 26.9264, -1.4686,
1.4299

■ 19.5320, 6.0502,
6.5235

■ 28.5760, -2.7274,
0.2429

■ 18.2763, 7.8261,
7.2824

■ 30.2698, -3.9206,
-0.9810

■ 17.1179, 9.6804,
7.9097

■ 32.0037, -5.0552,
-2.2371

■ 16.0686, 11.5881,
8.3810

■ 33.7744, -6.1376,
-3.5214

■ 15.1399, 13.5033,
8.6883

■ 35.5789, -7.1737,
-4.8310

■ 14.3258, 15.2914,
9.0714

■ 37.4148, -8.1685,
-6.1632

■ 14.3059, 15.3359,
9.0837

■ 39.2798, -9.1268,
-7.5162

Harmonies

Analogous

The Analogous color harmony consists of three colors that are next to each other on the color wheel.



23.7787, 2.3072, 2.2577



23.7782, 1.2757, 3.6660



23.7787, -0.4221, 4.4118

Triad

The Triadic color harmony groups three colors that are evenly spaced from another and form a triangle on the color wheel.



23.7787, 1.2750, 3.6664



23.7787, -4.6962, 2.0816



23.7787, -0.2265, -2.2558

Complementary

The Complementary color scheme is a pair of colors which are on the opposite of each other on the color wheel.



23.7782, 1.2757, 3.6660



24.7962, -3.4671, -1.1306

Split Complementary

Split-complementary colors differ from the complementary color scheme. The scheme consists of three colors, the original color and two neighbors of the complement color.



23.7787, -2.1063, -2.3123



23.7782, 1.2757, 3.6660



23.7787, -4.6475, 0.2889

Square

The Square scheme is like the rectangle color scheme, but the four colors are evenly spaced on the color wheel.



23.7787, 1.2750, 3.6664



23.7787, -3.8474, 3.5461



23.7787, -3.7123, -1.3504



23.7787, 1.4220, -1.2017

Rectangle

The Rectangle color scheme consists of four colors that form a rectangle on the color wheel.



23.7782, 1.2757, 3.6660



23.7787, -1.6839, 4.4732



23.7787, -3.7123, -1.3504



23.7787, -0.8533, -2.3948

Sweetspot

The Sweet Spot groups the original color and five complimentary colors.



23.7787, 1.2750, 3.6664



34.1685, -0.8090, 2.8752



23.1127, 4.4932, -1.4069



17.4867, -0.3898, 1.4951



66.9319, -3.5713, 3.6365



18.1947, -0.9708, 0.9886

Same Dimension

The Same Dimension uses a secret algorithm to generate beautiful new colors.



23.7787, 1.2750, 3.6664



30.3662, 2.6932, 5.5567



25.6381, -1.8907, 5.5551



13.2787, -0.1474, 1.2780



19.0220, 21.8538, 12.1039



44.8352, 57.5126, 28.6341

Inverse Universe

The Inverse Universe completely reimagines the original color for something new.



24.7962, -3.4671, -1.1306



32.0502, -5.1685, -2.3876



22.8854, -0.3429, -3.6183



13.5144, -1.2435, 0.1677



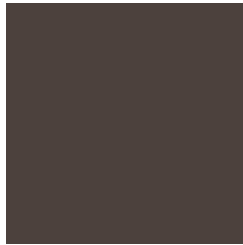
24.4190, -6.9144, -15.5954



58.1309, -14.9331, -40.4222

Previews

White Background



This preview shows how the HunterLab color 23.7782, 1.2757, 3.6660 looks on a white background.

Color Contrast Check

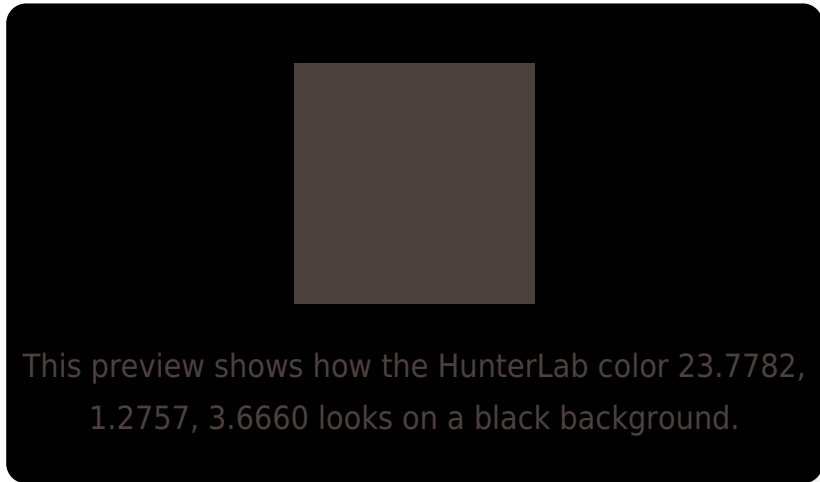
Large Text (above 18pt) WCAG AA ✓ Pass

Any Text WCAG AA ✓ Pass

Large Text (above 18pt) WCAG AAA ✓ Pass

Any Text WCAG AAA ✓ Pass

Black Background



Color Contrast Check

Large Text (above 18pt) WCAG AA × Fail

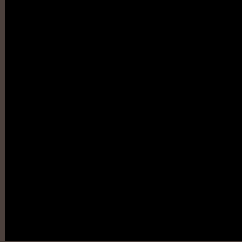
Any Text WCAG AA × Fail

Large Text (above 18pt) WCAG AAA × Fail

Any Text WCAG AAA × Fail

If you want to check with other color combinations, try the [Color Contrast Checker](#).

HunterLab 23.7782, 1.2757, 3.6660 Background



This preview shows how black text looks on a background with the HunterLab color 23.7782, 1.2757, 3.6660.



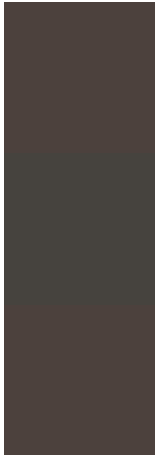
This preview shows how white text looks on a background with the HunterLab color 23.7782, 1.2757,

3.6660.

Color Blindness Simulation

Color vision deficiency is a very complex topic, and I could not describe the different causes any better than Wikipedia does, so if you want to learn more, you should check out their [article about color blindness](#).

Dichromacy



Original Color

23.7782, 1.2757, 3.6660

Protanopia

23.7996, -1.1302, 3.2918

Deuteranopia

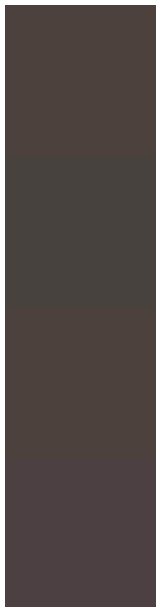
23.7782, 1.2757, 3.6660



Tritanopia

23.8207, 3.0360, 0.7176

Trichromacy



Original Color

23.7782, 1.2757, 3.6660

Protanomaly

23.7106, -0.1619, 3.2114

Deuteranomaly

23.7782, 1.2757, 3.6660

Tritanomaly

23.7443, 2.6309, 1.8069

Monochromacy



Original Color

23.7782, 1.2757, 3.6660

Achromatopsia

24.0428, -1.2829, 1.3063

Achromatomaly

23.9490, -0.4716, 2.3681

CSS Examples

Text

The CSS property to change the color of the text to HunterLab 23.7782, 1.2757, 3.6660 is called "color". The color property can be set on classes, ids or directly on the HTML element.

This example shows how text in the color `rgb(76, 65, 61)` looks like.

```
.text, #text, p{  
    color:rgb(76, 65, 61)  
}
```

If you want to add a text shadow in that color use the text-shadow property, you can generate a text shadow directly with our [CSS Text Shadow Generator](#).

Here you see how black text with a 4 pixel rgb(76, 65, 61) colored shadow looks like.

```
.shadow{ text-shadow: 4px 4px 2px rgb(76, 65, 61) }
```

Border

The CSS property to change the border of an element to HunterLab 23.7782, 1.2757, 3.6660 is called "border". The border property can be set on classes, ids or directly on the HTML element.

This example shows the color as border, it can be applied via the CSS property "border" or "border-color".

```
.border, #border, table{ border:4px solid rgb(76, 65, 61) }
```


If only the border color should be changed use the property `border-color`.

```
.border{ border-color:rgb(76, 65, 61) }
```

If you want to add a box shadow in that color use:

Here you see how a box with a 4 pixel `rgb(76, 65, 61)` colored shadow looks like.

```
.boxshadow{ -moz-box-shadow:4px 4px 4px  
4px rgb(76, 65, 61); -webkit-box-  
shadow:4px 4px 4px 4px rgb(76, 65, 61);  
box-shadow:4px 4px 4px 4px rgb(76, 65, 61)  
}
```

Background

The CSS property to change the background color of an element to HunterLab 23.7782, 1.2757, 3.6660 is called "background". The background property can be set on classes, ids or directly on the HTML element.

```
.background, #background, body{  
background: rgb(76, 65, 61) }
```

If only the background color should be changed can be used:

```
.background{ background-color: rgb(76, 65,  
61) }
```

This example shows the color as background, it is applied via the CSS property "background".

To optimize and compress your CSS code, you can use our [online CSS compressor and optimizer](#) based on csstidy. If you want to create a linear or radial gradient as background or border, check our [CSS Gradient Generator](#).

Hey! You found this booklet interesting? Support Converting Colors with the new Membership Option!

The pro membership hides all ads, plus gives you double the colors in the color bucket, and more awesome pro features!

[Learn more, Memberships starting at \\$2.50/m!](#)

**Follow me
on Twitter!**

@ConvertingColor