

Converting Colors

HunterLab(23.8293, 6.0741,
3.1848)

Have a look what the booklet for
HunterLab(23.8293, 6.0741, 3.1848)
contains.

HunterLab(23.8218, 6.2955, 3.0848)	3
<i>Conversions</i>	4
<i>Details</i>	6
<i>Harmonies</i>	12
<i>Previews</i>	24
<i>Color Blindness Simulation</i>	28
<i>CSS Examples</i>	31

Color

**HunterLab(23.8218, 6.2955,
3.0848)**

Conversions

Conversions Part 1

Format	Color
Hex	563D3F
RGB	86, 61, 63
RGB Percent	34%, 24%, 25%
CMY	0.6627, 0.7608, 0.7529
CMYK	0.00, 0.29, 0.27, 0.66
HSL	355°, 17%, 29%
HSV	355°, 29%, 34%
XYZ	6.4037, 5.6748, 5.4604
YIQ	68.7030, 14.2580, 5.9220

Conversions

Conversions Part 2

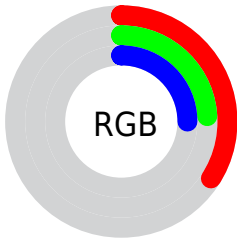
Format	Color
RYB	86, 61, 63
Decimal	5651775
CIELab	28.58, 11.31, 3.10
CIElCh	29, 11.730, 15.339
Yxy	5.6750, 0.3651, 0.3236
Android (android.graphics.Color)	4283841855 (0xFF563D3F)
YUV	68.7030, -2.8116, 15.1695
Hunter-Lab	23.8218, 6.2955, 3.0848

Details

The HunterLab color **23.8218, 6.2955, 3.0848** is a dark color, and the websafe version is hex **663333**. A complement of this color would be **28.7887, -7.8910, 0.3265**, and the grayscale version is **24.2967, -1.2964, 1.3201**.

A 20% lighter version of the original color is **41.6164, 6.4835, 4.3317**, and **9.8540, 5.2774, 1.8956** is the 20% darker color. If you saturate the color by 10%, you get **21.7880, 9.1872, 3.7208**, and if you desaturate by 10%, it is **26.0057, 3.4820, 2.5280**.

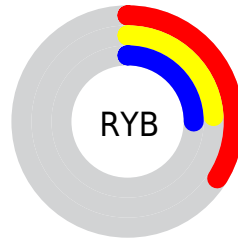
Distribution



Red (34%)

Green (24%)

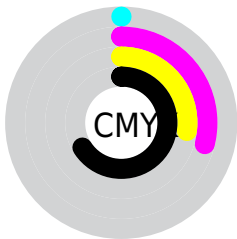
Blue (25%)



Red (34%)

Yellow (24%)

Blue (25%)

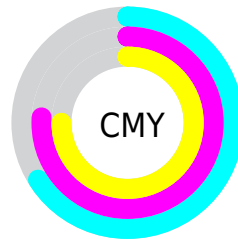


Cyan (0%)

Magenta (29%)

Yellow (27%)

Black (66%)



Cyan (66%)

Magenta (76%)

Yellow (75%)

Brightness & Saturation Gradients

These gradients show how the HunterLab color 23.8218, 6.2955, 3.0848 changes by changing the brightness by 10 percent. The first figure shows a shift by +10% for each color and the second figure -10%.

Similar to the brightness gradients but the following saturation gradients show a change of the HunterLab color 23.8218, 6.2955, 3.0848 by changing the saturation by 10% instead.

■ 23.8218, 6.2955,
3.0848

■ 23.8218, 6.2955,
3.0848

■ 124.9600, 5.9724,
9.9953

■ 16.2742, 5.9070,
2.4425

■ 41.5368, 6.7272,
4.4410

■ 9.7525, 5.3657,
1.8600

■ 51.5494, 6.8086,
5.1576

0.0000, INF, NaN

0.0000, NaN, NaN

■ 62.2579, 6.8157,
5.9004

0.0000, NaN, NaN

■ 73.6197, 6.7568,
6.6692

0.0000, NaN, NaN

■ 85.5992, 6.6384,
7.4636

0.0000, NaN, NaN

0.0000, NaN, NaN

■ 98.1660, 6.4654,

111.2940, 6.2423,
9.1272

■ 23.8218, 6.2955,
3.0848

■ 23.8218, 6.2955,
3.0848

■ 21.7880, 9.1872,
3.7208

■ 26.0057, 3.4820,
2.5280

■ 19.9293, 12.1260,
4.4366

■ 28.3160, 0.7610,
2.0425

■ 18.2775, 15.0415,
5.2251

■ 30.7355, -1.8694,
1.6205

■ 16.8670, 17.8151,
6.0630

■ 33.2497, -4.4162,
1.2536

■ 15.7313, 20.2761,
6.9061

■ 35.8470, -6.8890,
0.9340

■ 14.8948, 22.2278,
7.6892

■ 38.5179, -9.2978,
0.6549

■ 14.1864, 24.0967,
8.2499

■ 41.2549, -11.6522,
0.4105

■ 14.1191, 24.2862,
8.2964

■ 44.0514, -13.9607,
0.1958

■ 46.9023, -16.2311,
0.0067

Harmonies

Analogous

The Analogous color harmony consists of three colors that are next to each other on the color wheel.



23.8224, 6.3200, -0.5552



23.8218, 6.2955, 3.0848



23.8224, 4.1571, 5.7811

Triad

The Triadic color harmony groups three colors that are evenly spaced from another and form a triangle on the color wheel.



23.8224, 6.2946, 3.0852



23.8224, -6.3121, 5.7342



23.8224, -3.1170, -6.5708

Complementary

The Complementary color scheme is a pair of colors which are on the opposite of each other on the color wheel.



23.8218, 6.2955, 3.0848



28.7887, -7.8910, 0.3265

Split Complementary

Split-complementary colors differ from the complementary color scheme. The scheme consists of three colors, the original color and two neighbors of the complement color.



23.8224, -6.2553, -4.2751



23.8218, 6.2955, 3.0848



23.8224, -8.0189, 3.0109

Square

The Square scheme is like the rectangle color scheme, but the four colors are evenly spaced on the color wheel.



23.8224, 6.2946, 3.0852



23.8224, -3.1990, 7.1369



23.8224, -7.9988, -0.6422



23.8224, 0.7175, -6.5424

Rectangle

The Rectangle color scheme consists of four colors that form a rectangle on the color wheel.



23.8218, 6.2955, 3.0848



23.8224, 1.8955, 6.8494



23.8224, -7.9988, -0.6422



23.8224, -4.2829, -6.0311

Sweetspot

The Sweet Spot groups the original color and five complimentary colors.



23.8224, 6.2946, 3.0852



37.3606, 1.0901, 2.7145



24.2706, 8.9889, -6.3946



18.3105, 0.7013, 1.3686



69.0652, -3.6851, 3.7524



19.9203, -1.0629, 1.0823

Same Dimension

The Same Dimension uses a secret algorithm to generate beautiful new colors.



23.8224, 6.2946, 3.0852



29.5576, 11.0345, 4.6659



26.2206, 1.4952, 6.1996



14.5674, 0.3522, 1.0419



17.7504, 30.5038, 10.6506



42.0004, 72.0369, 26.2874

Inverse Universe

The Inverse Universe completely reimagines the original color for something new.



23.8224, 6.2946, 3.0852



29.5576, 11.0345, 4.6659



26.0305, -3.3105, -4.0714



14.5674, 0.3522, 1.0419



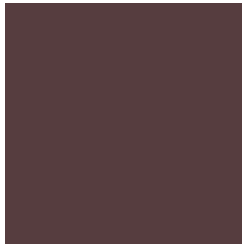
17.7504, 30.5038, 10.6506



42.0004, 72.0369, 26.2874

Previews

White Background



This preview shows how the HunterLab color 23.8218, 6.2955, 3.0848 looks on a white background.

Color Contrast Check

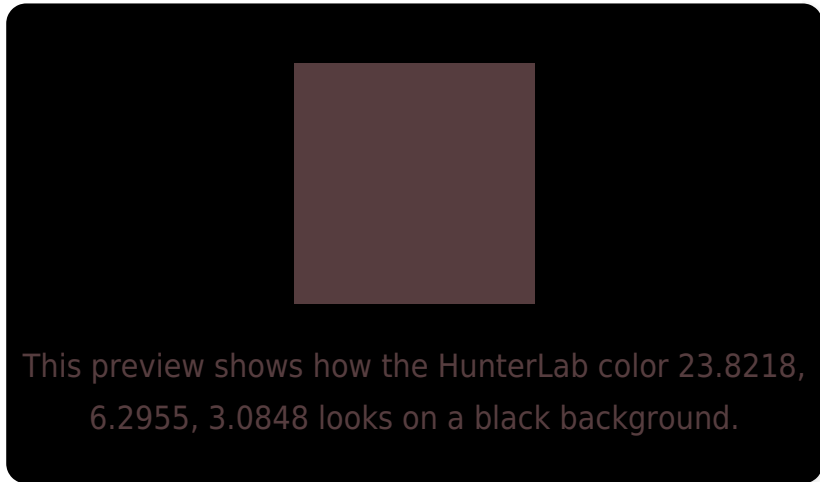
Large Text (above 18pt) WCAG AA ✓ Pass

Any Text WCAG AA ✓ Pass

Large Text (above 18pt) WCAG AAA ✓ Pass

Any Text WCAG AAA ✓ Pass

Black Background



Color Contrast Check

Large Text (above 18pt) WCAG AA × Fail

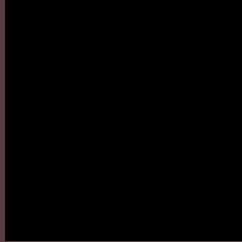
Any Text WCAG AA × Fail

Large Text (above 18pt) WCAG AAA × Fail

Any Text WCAG AAA × Fail

If you want to check with other color combinations, try the [Color Contrast Checker](#).

HunterLab 23.8218, 6.2955, 3.0848 Background



This preview shows how black text looks on a background with the HunterLab color 23.8218, 6.2955, 3.0848.

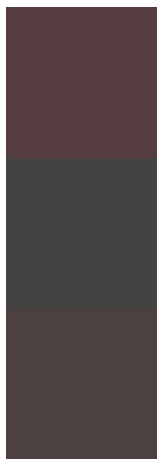


This preview shows how white text looks on a background with the HunterLab color 23.8218, 6.2955,

Color Blindness Simulation

Color vision deficiency is a very complex topic, and I could not describe the different causes any better than Wikipedia does, so if you want to learn more, you should check out their [article about color blindness](#).

Dichromacy



Original Color

23.8218, 6.2955, 3.0848

Protanopia

23.8178, -0.8758, 1.8305

Deuteranopia

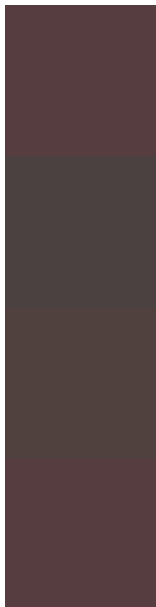
23.8010, 1.3985, 3.3377



Tritanopia

23.8696, 6.5417, 2.4007

Trichromacy



Original Color

23.8218, 6.2955, 3.0848

Protanomaly

23.7868, 1.4927, 2.2181

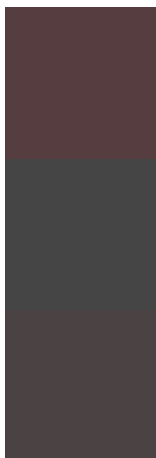
Deuteranomaly

23.9167, 3.0097, 3.4920

Tritanomaly

23.8455, 6.4176, 2.7455

Monochromacy



Original Color

23.8218, 6.2955, 3.0848

Achromatopsia

24.3949, -1.3017, 1.3254

Achromatomaly

24.0781, 1.3280, 1.7842

CSS Examples

Text

The CSS property to change the color of the text to HunterLab 23.8218, 6.2955, 3.0848 is called "color". The color property can be set on classes, ids or directly on the HTML element.

This example shows how text in the color rgb(86, 61, 63) looks like.

```
.text, #text, p{  
    color:rgb(86, 61, 63)  
}
```

If you want to add a text shadow in that color use the text-shadow property, you can generate a text shadow directly with our [CSS Text Shadow Generator](#).

Here you see how black text with a 4 pixel rgb(86, 61, 63) colored shadow looks like.

```
.shadow{ text-shadow: 4px 4px 2px rgb(86, 61, 63) }
```

Border

The CSS property to change the border of an element to HunterLab 23.8218, 6.2955, 3.0848 is called "border".

The border property can be set on classes, ids or directly on the HTML element.

This example shows the color as border, it can be applied via the CSS property "border" or "border-color".

```
.border, #border, table{ border:4px solid rgb(86, 61, 63) }
```


If only the border color should be changed use the property `border-color`.

```
.border{ border-color:rgb(86, 61, 63) }
```

If you want to add a box shadow in that color use:

Here you see how a box with a 4 pixel `rgb(86, 61, 63)` colored shadow looks like.

```
.boxshadow{ -moz-box-shadow:4px 4px 4px  
4px rgb(86, 61, 63); -webkit-box-  
shadow:4px 4px 4px 4px rgb(86, 61, 63);  
box-shadow:4px 4px 4px 4px rgb(86, 61, 63)  
}
```

Background

The CSS property to change the background color of an element to HunterLab 23.8218, 6.2955, 3.0848 is called "background". The background property can be set on classes, ids or directly on the HTML element.

```
.background, #background, body{  
background: rgb(86, 61, 63) }
```

If only the background color should be changed can be used:

```
.background{ background-color: rgb(86, 61,  
63) }
```

This example shows the color as background, it is applied via the CSS property "background".

To optimize and compress your CSS code, you can use our [online CSS compressor and optimizer](#) based on csstidy. If you want to create a linear or radial gradient as background or border, check our [CSS Gradient Generator](#).

Hey! You found this booklet interesting? Support Converting Colors with the new Membership Option!

The pro membership hides all ads, plus gives you double the colors in the color bucket, and more awesome pro features!

[Learn more, Memberships starting at \\$2.50/m!](#)

**Follow me
on Twitter!**

@ConvertingColor