

Converting Colors

HunterLab(23.8821, 1.6039,
5.6660)

Have a look what the booklet for
HunterLab(23.8821, 1.6039, 5.6660)
contains.

HunterLab(23.9138, 1.4762, 5.8001)	3
<i>Conversions</i>	4
<i>Details</i>	6
<i>Harmonies</i>	12
<i>Previews</i>	24
<i>Color Blindness Simulation</i>	28
<i>CSS Examples</i>	31

Color

**HunterLab(23.9138, 1.4762,
5.8001)**

Conversions

Conversions Part 1

Format	Color
Hex	4F4137
RGB	79, 65, 55
RGB Percent	31%, 25%, 22%
CMY	0.6902, 0.7451, 0.7843
CMYK	0.00, 0.18, 0.30, 0.69
HSL	25°, 18%, 26%
HSV	25°, 30%, 31%
XYZ	5.8043, 5.7187, 4.4123
YIQ	68.0460, 11.5540, -0.1420

Conversions

Conversions Part 2

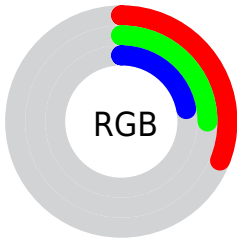
Format	Color
R_{YB}	79, 72, 55
Decimal	5194039
CIE Lab	28.69, 4.26, 8.36
CIE LCh	29, 9.382, 62.986
Yxy	5.7190, 0.3642, 0.3589
Android (android.graphics.Color)	4283384119 (0xFF4F4137)
YUV	68.0460, -6.4317, 9.6067
Hunter-Lab	23.9138, 1.4762, 5.8001

Details

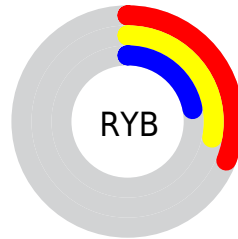
The HunterLab color **23.9138, 1.4762, 5.8001** is a dark color, and the websafe version is hex **333333**. A complement of this color would be **23.7335, -3.0646, -3.9084**, and the grayscale version is **24.0784, -1.2848, 1.3082**.

A 20% lighter version of the original color is **41.7573, 1.1194, 7.9019**, and **9.6854, 1.6095, 4.0581** is the 20% darker color. If you saturate the color by 10%, you get **22.6749, 2.6409, 6.9586**, and if you desaturate by 10%, it is **25.2026, 0.4076, 4.5080**.

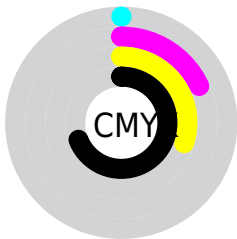
Distribution



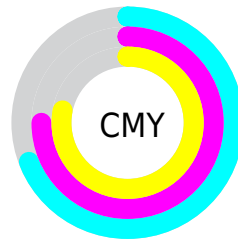
- Red (31%)
- Green (25%)
- Blue (22%)



- Red (31%)
- Yellow (28%)
- Blue (22%)



- Cyan (0%)
- Magenta (18%)
- Yellow (30%)
- Black (69%)



- Cyan (69%)
- Magenta (75%)
- Yellow (78%)

Brightness & Saturation Gradients

These gradients show how the HunterLab color 23.9138, 1.4762, 5.8001 changes by changing the brightness by 10 percent. The first figure shows a shift by +10% for each color and the second figure -10%.

Similar to the brightness gradients but the following saturation gradients show a change of the HunterLab color 23.9138, 1.4762, 5.8001 by changing the saturation by 10% instead.

■ 23.9138, 1.4762,
5.8001

■ 23.9138, 1.4762,
5.8001

■ 125.1198, -1.9739,
15.2222

■ 16.3553, 1.5671,
4.7269

■ 41.6476, 1.0649,
7.8698

■ 9.8208, 1.5581,
4.0772

■ 51.6684, 0.7676,
8.8949

0.0000, NaN, NaN

0.0000, NaN, NaN

■ 62.3846, 0.4181,
9.9234

0.0000, NaN, NaN

■ 73.7536, 0.0212,
10.9595

0.0000, NaN, NaN

■ 85.7400, -0.4192,
12.0059

0.0000, NaN, NaN

0.0000, NaN, NaN

■ 98.3135, -0.9002,

13.0643

0.0000, NaN, NaN

111.4477, -1.4192,
14.1361

■ 23.9138, 1.4762,
5.8001

■ 23.9138, 1.4762,
5.8001

■ 22.6749, 2.6409,
6.9586

■ 25.2026, 0.4076,
4.5080

■ 21.4891, 3.9090,
7.9658

■ 26.5355, -0.5686,
3.0964

■ 20.3620, 5.2826,
8.8041

■ 27.9092, -1.4598,
1.5787

■ 19.2994, 6.7608,
9.4551

■ 29.3204, -2.2728,
-0.0334

■ 18.3073, 8.3377,
9.9019

■ 30.7662, -3.0142,
-1.7300

■ 17.3906, 9.9950,
10.1469

■ 32.2439, -3.6903,
-3.5024

■ 16.5702, 11.5728,
10.4131

■ 33.7512, -4.3068,
-5.3433

■ 35.2861, -4.8690,
-7.2462

■ 36.8467, -5.3819,
-9.2057

Harmonies

Analogous

The Analogous color harmony consists of three colors that are next to each other on the color wheel.



23.9143, 3.9012, 4.1729



23.9138, 1.4762, 5.8001



23.9143, -1.5853, 6.2763

Triad

The Triadic color harmony groups three colors that are evenly spaced from another and form a triangle on the color wheel.



23.9143, 1.4754, 5.8004



23.9143, -6.9141, 1.0061



23.9143, 2.0365, -3.9281

Complementary

The Complementary color scheme is a pair of colors which are on the opposite of each other on the color wheel.



23.9138, 1.4762, 5.8001



23.7335, -3.0646, -3.9084

Split Complementary

Split-complementary colors differ from the complementary color scheme. The scheme consists of three colors, the original color and two neighbors of the complement color.



23.9143, -0.9677, -5.0424



23.9138, 1.4762, 5.8001



23.9143, -6.0495, -1.9765

Square

The Square scheme is like the rectangle color scheme, but the four colors are evenly spaced on the color wheel.



23.9143, 1.4754, 5.8004



23.9143, -6.3328, 3.7241



23.9143, -3.9108, -4.2869



23.9143, 4.2365, -1.4040

Rectangle

The Rectangle color scheme consists of four colors that form a rectangle on the color wheel.



23.9138, 1.4762, 5.8001



23.9143, -3.5485, 5.9331



23.9143, -3.9108, -4.2869



23.9143, 1.0820, -4.4935

Sweetspot

The Sweet Spot groups the original color and five complimentary colors.



23.9143, 1.4754, 5.8004



34.7793, -0.8697, 3.8325



21.9645, 7.5992, -1.5307



17.2859, -0.3833, 1.9938



66.9319, -3.5713, 3.6365



18.1947, -0.9708, 0.9886

Same Dimension

The Same Dimension uses a secret algorithm to generate beautiful new colors.



23.9143, 1.4754, 5.8004



30.0545, 2.9557, 8.6213



26.9182, -3.5534, 8.5634



13.4079, -0.3664, 1.4202



21.2532, 15.9339, 13.3751



50.0411, 43.0656, 31.5890

Inverse Universe

The Inverse Universe completely reimagines the original color for something new.



23.7335, -3.0646, -3.9084



29.7660, -4.2329, -6.7710



20.7438, 1.9906, -8.3255



13.3818, -1.0274, 0.0093



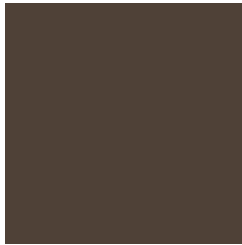
20.3422, -0.6078, -24.1139



47.6401, 1.7511, -63.3261

Previews

White Background



This preview shows how the HunterLab color 23.9138, 1.4762, 5.8001 looks on a white background.

Color Contrast Check

Large Text (above 18pt) WCAG AA ✓ Pass

Any Text WCAG AA ✓ Pass

Large Text (above 18pt) WCAG AAA ✓ Pass

Any Text WCAG AAA ✓ Pass

Black Background



Color Contrast Check

Large Text (above 18pt) WCAG AA × Fail

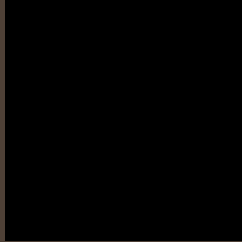
Any Text WCAG AA × Fail

Large Text (above 18pt) WCAG AAA × Fail

Any Text WCAG AAA × Fail

If you want to check with other color combinations, try the [Color Contrast Checker](#).

HunterLab 23.9138, 1.4762, 5.8001 Background



This preview shows how black text looks on a background with the HunterLab color 23.9138, 1.4762, 5.8001.

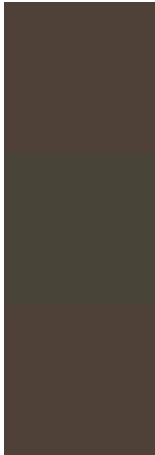


This preview shows how white text looks on a background with the HunterLab color 23.9138, 1.4762,

Color Blindness Simulation

Color vision deficiency is a very complex topic, and I could not describe the different causes any better than Wikipedia does, so if you want to learn more, you should check out their [article about color blindness](#).

Dichromacy



Original Color

23.9138, 1.4762, 5.8001

Protanopia

24.0780, -1.7080, 5.5940

Deuteranopia

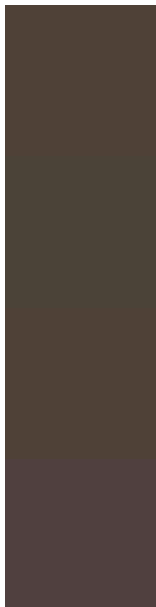
23.9138, 1.4762, 5.8001



Tritanopia

23.8282, 4.2149, 1.1489

Trichromacy



Original Color

23.9138, 1.4762, 5.8001

Protanomaly

24.0742, -0.4407, 5.6125

Deuteranomaly

23.9138, 1.4762, 5.8001

Tritanomaly

23.9398, 3.1323, 3.1598

Monochromacy



Original Color

23.9138, 1.4762, 5.8001

Achromatopsia

24.0428, -1.2829, 1.3063

Achromatomaly

23.9811, -0.4563, 3.1424

CSS Examples

Text

The CSS property to change the color of the text to HunterLab 23.9138, 1.4762, 5.8001 is called "color". The color property can be set on classes, ids or directly on the HTML element.

This example shows how text in the color `rgb(79, 65, 55)` looks like.

```
.text, #text, p{  
    color:rgb(79, 65, 55)  
}
```

If you want to add a text shadow in that color use the text-shadow property, you can generate a text shadow directly with our [CSS Text Shadow Generator](#).

Here you see how black text with a 4 pixel rgb(79, 65, 55) colored shadow looks like.

```
.shadow{ text-shadow: 4px 4px 2px rgb(79, 65, 55) }
```

Border

The CSS property to change the border of an element to HunterLab 23.9138, 1.4762, 5.8001 is called "border". The border property can be set on classes, ids or directly on the HTML element.

This example shows the color as border, it can be applied via the CSS property "border" or "border-color".

```
.border, #border, table{ border:4px solid rgb(79, 65, 55) }
```


If only the border color should be changed use the property border-color.

```
.border{ border-color:rgb(79, 65, 55) }
```

If you want to add a box shadow in that color use:

Here you see how a box with a 4 pixel rgb(79, 65, 55) colored shadow looks like.

```
.boxshadow{ -moz-box-shadow:4px 4px 4px  
4px rgb(79, 65, 55); -webkit-box-  
shadow:4px 4px 4px 4px rgb(79, 65, 55);  
box-shadow:4px 4px 4px 4px rgb(79, 65, 55)  
}
```

Background

The CSS property to change the background color of an element to HunterLab 23.9138, 1.4762, 5.8001 is called "background". The background property can be set on classes, ids or directly on the HTML element.

```
.background, #background, body{  
background: rgb(79, 65, 55) }
```

If only the background color should be changed can be used:

```
.background{ background-color: rgb(79, 65,  
55) }
```

This example shows the color as background, it is applied via the CSS property "background".

To optimize and compress your CSS code, you can use our [online CSS compressor and optimizer](#) based on csstidy. If you want to create a linear or radial gradient as background or border, check our [CSS Gradient Generator](#).

Hey! You found this booklet interesting? Support Converting Colors with the new Membership Option!

The pro membership hides all ads, plus gives you double the colors in the color bucket, and more awesome pro features!

[Learn more, Memberships starting at \\$2.50/m!](#)

**Follow me
on Twitter!**

@ConvertingColor