

Converting Colors

HunterLab(23.9870, 7.8977,
3.6525)

Have a look what the booklet for
HunterLab(23.9870, 7.8977, 3.6525)
contains.

HunterLab(23.9858, 7.8991, 3.6528)	3
<i>Conversions</i>	4
<i>Details</i>	6
<i>Harmonies</i>	12
<i>Previews</i>	24
<i>Color Blindness Simulation</i>	28
<i>CSS Examples</i>	31

Color

**HunterLab(23.9858, 7.8991,
3.6528)**

Conversions

Conversions Part 1

Format	Color
Hex	5A3C3E
RGB	90, 60, 62
RGB Percent	35%, 24%, 24%
CMY	0.6471, 0.7647, 0.7569
CMYK	0.00, 0.33, 0.31, 0.65
HSL	356°, 20%, 29%
HSV	356°, 33%, 35%
XYZ	6.7018, 5.7532, 5.3147
YIQ	69.1980, 17.2380, 6.9820

Conversions

Conversions Part 2

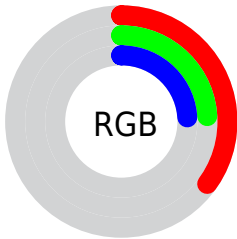
Format	Color
RYB	90, 60, 62
Decimal	5913662
CIELab	28.78, 13.54, 4.12
CIELCh	29, 14.153, 16.913
Yxy	5.7535, 0.3771, 0.3238
Android (android.graphics.Color)	4284103742 (0xFF5A3C3E)
YUV	69.1980, -3.5486, 18.2434
Hunter-Lab	23.9858, 7.8991, 3.6528

Details

The HunterLab color **23.9858, 7.8991, 3.6528** is a dark color, and the websafe version is hex **663333**. A complement of this color would be **29.9628, -9.0571, 0.0343**, and the grayscale version is **24.4731, -1.3058, 1.3297**.

A 20% lighter version of the original color is **41.8234, 8.3583, 5.4075**, and **9.8234, 6.8486, 2.1786** is the 20% darker color. If you saturate the color by 10%, you get **21.9183, 10.9694, 4.3901**, and if you desaturate by 10%, it is **26.2250, 4.9026, 2.9950**.

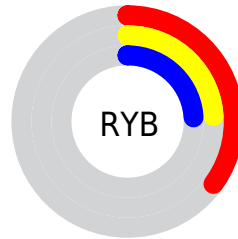
Distribution



Red (35%)

Green (24%)

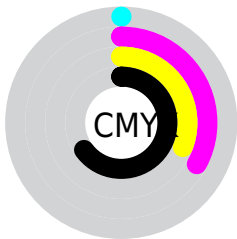
Blue (24%)



Red (35%)

Yellow (24%)

Blue (24%)

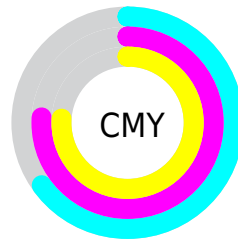


Cyan (0%)

Magenta (33%)

Yellow (31%)

Black (65%)



Cyan (65%)

Magenta (76%)

Yellow (76%)

Brightness & Saturation Gradients

These gradients show how the HunterLab color 23.9858, 7.8991, 3.6528 changes by changing the brightness by 10 percent. The first figure shows a shift by +10% for each color and the second figure -10%.

Similar to the brightness gradients but the following saturation gradients show a change of the HunterLab color 23.9858, 7.8991, 3.6528 by changing the saturation by 10% instead.

■ 23.9858, 7.8991,
3.6528

■ 23.9858, 7.8991,
3.6528

■ 125.2448, 8.5175,
11.0396

■ 16.4187, 7.3731,
2.9305

■ 41.7342, 8.5793,
5.1428

■ 9.8744, 6.6854,
2.2846

■ 51.7614, 8.7741,
5.9177

0.0000, INF, NaN

0.0000, NaN, NaN

■ 62.4837, 8.8888,
6.7147

0.0000, NaN, NaN

■ 73.8584, 8.9324,
7.5344

0.0000, NaN, NaN

■ 85.8502, 8.9118,
8.3768

0.0000, NaN, NaN

0.0000, NaN, NaN

■ 98.4288, 8.8329,

111.5680, 8.7002,
10.1297

■ 23.9858, 7.8991,
3.6528

■ 23.9858, 7.8991,
3.6528

■ 21.9183, 10.9694,
4.3901

■ 26.2250, 4.9026,
2.9950

■ 20.0519, 14.0657,
5.2018

■ 28.6085, 2.0037,
2.4115

■ 18.4224, 17.0908,
6.0711

■ 31.1158, -0.7952,
1.8956

■ 17.0669, 19.8913,
6.9609

■ 33.7300, -3.5001,
1.4389

■ 16.0184, 22.2646,
7.8110

■ 36.4375, -6.1206,
1.0334

■ 15.2628, 24.1114,
8.5255

■ 39.2272, -8.6676,
0.6719

■ 14.7878, 25.4135,
8.8670

■ 42.0903, -11.1518,
0.3480

■ 45.0193, -13.5831,
0.0562

■ 48.0081, -15.9701,
-0.2080

Harmonies

Analogous

The Analogous color harmony consists of three colors that are next to each other on the color wheel.



23.9864, 8.0755, -0.7036



23.9858, 7.8991, 3.6528



23.9864, 5.1451, 6.7292

Triad

The Triadic color harmony groups three colors that are evenly spaced from another and form a triangle on the color wheel.



23.9864, 7.8981, 3.6532



23.9864, -7.4748, 6.4246



23.9864, -3.2745, -8.5576

Complementary

The Complementary color scheme is a pair of colors which are on the opposite of each other on the color wheel.



23.9858, 7.8991, 3.6528



29.9628, -9.0571, 0.0343

Split Complementary

Split-complementary colors differ from the complementary color scheme. The scheme consists of three colors, the original color and two neighbors of the complement color.



23.9864, -7.0948, -5.7830



23.9858, 7.8991, 3.6528



23.9864, -9.3923, 3.1548

Square

The Square scheme is like the rectangle color scheme, but the four colors are evenly spaced on the color wheel.



23.9864, 7.8981, 3.6532



23.9864, -3.8302, 8.1074



23.9864, -9.2588, -1.3062



23.9864, 1.3791, -8.3537

Rectangle

The Rectangle color scheme consists of four colors that form a rectangle on the color wheel.



23.9858, 7.8991, 3.6528



23.9864, 2.3309, 7.8924



23.9864, -9.2588, -1.3062



23.9864, -4.6913, -7.9229

Sweetspot

The Sweet Spot groups the original color and five complimentary colors.



23.9864, 7.8981, 3.6532



38.8205, 1.5235, 2.9755



24.5864, 11.3230, -7.9779



18.9454, 0.9086, 1.4929



70.1359, -3.7423, 3.8106



20.7927, -1.1094, 1.1297

Same Dimension

The Same Dimension uses a secret algorithm to generate beautiful new colors.



23.9864, 7.8981, 3.6532



29.5271, 13.6767, 5.5999



26.9541, 1.9338, 7.2385



15.3309, 0.3809, 1.1209



18.1895, 31.2381, 11.0716



42.5055, 72.8785, 26.7949

Inverse Universe

The Inverse Universe completely reimagines the original color for something new.



23.9864, 7.8981, 3.6532



29.5271, 13.6767, 5.5999



26.4704, -3.4148, -5.4147



15.3309, 0.3809, 1.1209



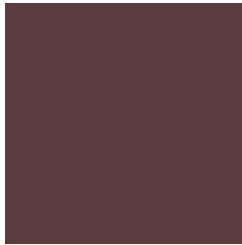
18.1895, 31.2381, 11.0716



42.5055, 72.8785, 26.7949

Previews

White Background



This preview shows how the HunterLab color 23.9858, 7.8991, 3.6528 looks on a white background.

Color Contrast Check

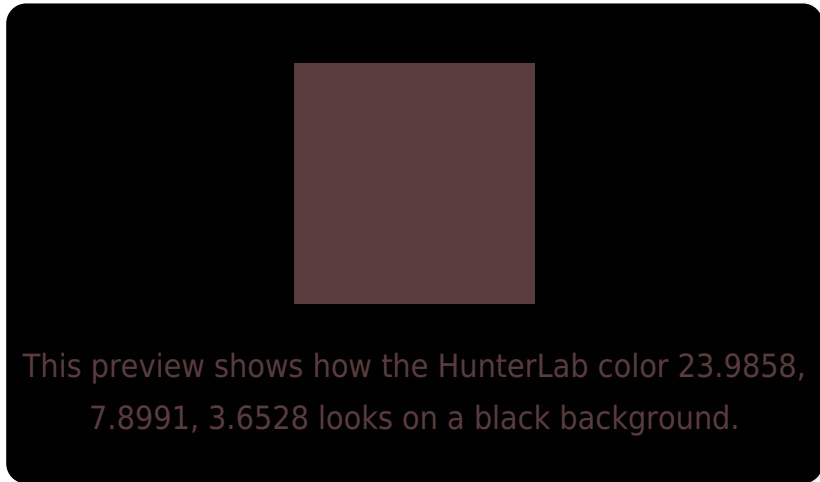
Large Text (above 18pt) WCAG AA ✓ Pass

Any Text WCAG AA ✓ Pass

Large Text (above 18pt) WCAG AAA ✓ Pass

Any Text WCAG AAA ✓ Pass

Black Background



Color Contrast Check

Large Text (above 18pt) WCAG AA × Fail

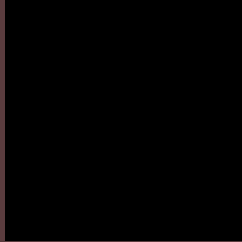
Any Text WCAG AA × Fail

Large Text (above 18pt) WCAG AAA × Fail

Any Text WCAG AAA × Fail

If you want to check with other color combinations, try the [Color Contrast Checker](#).

HunterLab 23.9858, 7.8991, 3.6528 Background



This preview shows how black text looks on a background with the HunterLab color 23.9858, 7.8991, 3.6528.

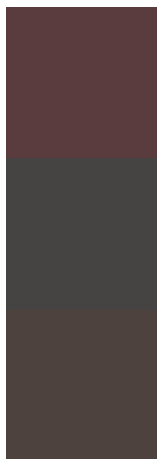


This preview shows how white text looks on a background with the HunterLab color 23.9858, 7.8991,

Color Blindness Simulation

Color vision deficiency is a very complex topic, and I could not describe the different causes any better than Wikipedia does, so if you want to learn more, you should check out their [article about color blindness](#).

Dichromacy



Original Color

23.9858, 7.8991, 3.6528

Protanopia

24.1447, -1.0283, 2.2030

Deuteranopia

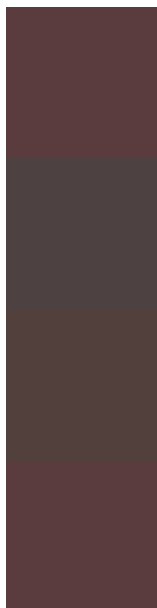
24.1063, 1.1396, 4.0156



Tritanopia

24.0324, 8.1363, 2.9845

Trichromacy



Original Color

23.9858, 7.8991, 3.6528

Protanomaly

23.9584, 2.0676, 2.4231

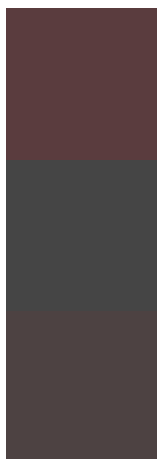
Deuteranomaly

24.0781, 3.4954, 4.0268

Tritanomaly

24.0089, 8.0167, 3.3213

Monochromacy



Original Color

23.9858, 7.8991, 3.6528

Achromatopsia

24.3949, -1.3017, 1.3254

Achromatomaly

24.2230, 1.7659, 2.3411

CSS Examples

Text

The CSS property to change the color of the text to HunterLab 23.9858, 7.8991, 3.6528 is called "color". The color property can be set on classes, ids or directly on the HTML element.

This example shows how text in the color rgb(90, 60, 62) looks like.

```
.text, #text, p{  
    color:rgb(90, 60, 62)  
}
```

If you want to add a text shadow in that color use the text-shadow property, you can generate a text shadow directly with our [CSS Text Shadow Generator](#).

Here you see how black text with a 4 pixel rgb(90, 60, 62) colored shadow looks like.

```
.shadow{ text-shadow: 4px 4px 2px rgb(90, 60, 62) }
```

Border

The CSS property to change the border of an element to HunterLab 23.9858, 7.8991, 3.6528 is called "border".

The border property can be set on classes, ids or directly on the HTML element.

This example shows the color as border, it can be applied via the CSS property "border" or "border-color".

```
.border, #border, table{ border:4px solid rgb(90, 60, 62) }
```


If only the border color should be changed use the property border-color.

```
.border{ border-color:rgb(90, 60, 62) }
```

If you want to add a box shadow in that color use:

Here you see how a box with a 4 pixel rgb(90, 60, 62) colored shadow looks like.

```
.boxshadow{ -moz-box-shadow:4px 4px 4px  
4px rgb(90, 60, 62); -webkit-box-  
shadow:4px 4px 4px 4px rgb(90, 60, 62);  
box-shadow:4px 4px 4px 4px rgb(90, 60, 62)  
}
```

Background

The CSS property to change the background color of an element to HunterLab 23.9858, 7.8991, 3.6528 is called "background". The background property can be set on classes, ids or directly on the HTML element.

```
.background, #background, body{  
background: rgb(90, 60, 62) }
```

If only the background color should be changed can be used:

```
.background{ background-color: rgb(90, 60,  
62) }
```

This example shows the color as background, it is applied via the CSS property "background".

To optimize and compress your CSS code, you can use our [online CSS compressor and optimizer](#) based on csstidy. If you want to create a linear or radial gradient as background or border, check our [CSS Gradient Generator](#).

Hey! You found this booklet interesting? Support Converting Colors with the new Membership Option!

The pro membership hides all ads, plus gives you double the colors in the color bucket, and more awesome pro features!

[Learn more, Memberships starting at \\$2.50/m!](#)

**Follow me
on Twitter!**

@ConvertingColor