

Converting Colors

HunterLab(24.1859, 3.2504,
8.5637)

Have a look what the booklet for
HunterLab(24.1859, 3.2504, 8.5637)
contains.

HunterLab(24.1712, 3.2225, 8.6104)	3
<i>Conversions</i>	4
<i>Details</i>	6
<i>Harmonies</i>	12
<i>Previews</i>	24
<i>Color Blindness Simulation</i>	28
<i>CSS Examples</i>	31

Color

**HunterLab(24.1712, 3.2225,
8.6104)**

Conversions

Conversions Part 1

Format	Color
Hex	56402E
RGB	86, 64, 46
RGB Percent	34%, 25%, 18%
CMY	0.6627, 0.7490, 0.8196
CMYK	0.00, 0.26, 0.47, 0.66
HSL	27°, 30%, 26%
HSV	27°, 47%, 34%
XYZ	6.1643, 5.8425, 3.3876
YIQ	68.5260, 18.8900, -0.9340

Conversions

Conversions Part 2

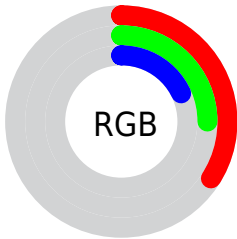
Format	Color
R_{YB}	86, 79, 46
Decimal	5652526
CIE Lab	29.01, 6.87, 14.70
CIE LCh	29, 16.229, 64.956
Yxy	5.8427, 0.4004, 0.3795
Android (android.graphics.Color)	4283842606 (0xFF56402E)
YUV	68.5260, -11.1053, 15.3247
Hunter-Lab	24.1712, 3.2225, 8.6104

Details

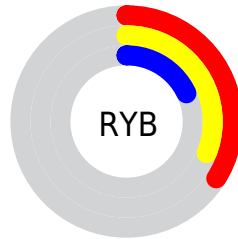
The HunterLab color **24.1712, 3.2225, 8.6104** is a dark color, and the websafe version is hex **663333**. A complement of this color would be **23.2094, -3.1354, -8.2440**, and the grayscale version is **24.2615, -1.2945, 1.3182**.

A 20% lighter version of the original color is **42.0469, 3.0129, 11.6844**, and **9.9370, 3.1463, 6.1782** is the 20% darker color. If you saturate the color by 10%, you get **22.9577, 4.5779, 9.6208**, and if you desaturate by 10%, it is **25.4436, 1.9827, 7.4069**.

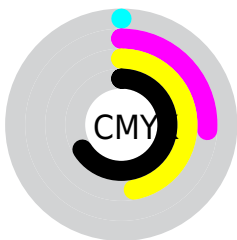
Distribution



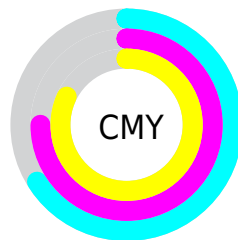
- Red (34%)
- Green (25%)
- Blue (18%)



- Red (34%)
- Yellow (31%)
- Blue (18%)



- Cyan (0%)
- Magenta (26%)
- Yellow (47%)
- Black (66%)



- Cyan (66%)
- Magenta (75%)
- Yellow (82%)

Brightness & Saturation Gradients

These gradients show how the HunterLab color 24.1712, 3.2225, 8.6104 changes by changing the brightness by 10 percent. The first figure shows a shift by +10% for each color and the second figure -10%.

Similar to the brightness gradients but the following saturation gradients show a change of the HunterLab color 24.1712, 3.2225, 8.6104 by changing the saturation by 10% instead.

■ 24.1712, 3.2225,
8.6104

■ 24.1712, 3.2225,
8.6104

■ 125.5662, 0.9277,
21.2456

■ 16.5822, 3.1341,
6.9743

■ 41.9571, 3.1240,
11.6058

■ 10.0125, 2.9240,
6.6631

■ 52.0009, 2.9668,
13.0277

0.0000, INF, NaN

0.0000, NaN, NaN

■ 62.7386, 2.7490,
14.4220

0.0000, NaN, NaN

■ 74.1280, 2.4768,
15.7988

0.0000, NaN, NaN

■ 86.1336, 2.1551,
17.1650

0.0000, NaN, NaN

0.0000, NaN, NaN

■ 98.7254, 1.7876,

18.5259

0.0000, NaN, NaN

111.8772, 1.3776,
19.8851

■ 24.1712, 3.2225,
8.6104

■ 24.1712, 3.2225,
8.6104

■ 22.9577, 4.5779,
9.6208

■ 25.4436, 1.9827,
7.4069

■ 21.8067, 6.0536,
10.4178

■ 26.7685, 0.8571,
6.0285

■ 20.7243, 7.6459,
10.9838

■ 28.1419, -0.1615,
4.4931

■ 19.7160, 9.3460,
11.3047

■ 29.5600, -1.0800,
2.8172

■ 18.7793, 11.0975,
11.4939

■ 31.0191, -1.9057,
1.0152

■ 18.4665, 11.6992,
11.5838

■ 32.5161, -2.6461,
-0.9001

■ 34.0482, -3.3080,
-2.9174

■ 35.6128, -3.8981,
-5.0270

■ 37.2077, -4.4225,
-7.2203

Harmonies

Analogous

The Analogous color harmony consists of three colors that are next to each other on the color wheel.



24.1718, 7.7350, 6.2794



24.1712, 3.2225, 8.6104



24.1718, -2.1736, 9.1780

Triad

The Triadic color harmony groups three colors that are evenly spaced from another and form a triangle on the color wheel.



24.1718, 3.2215, 8.6107



24.1718, -10.7130, 0.4547



24.1718, 4.8922, -8.1616

Complementary

The Complementary color scheme is a pair of colors which are on the opposite of each other on the color wheel.



24.1712, 3.2225, 8.6104



23.2094, -3.1354, -8.2440

Split Complementary

Split-complementary colors differ from the complementary color scheme. The scheme consists of three colors, the original color and two neighbors of the complement color.



24.1718, -0.3956, -10.6103



24.1712, 3.2225, 8.6104



24.1718, -9.1606, -4.9920

Square

The Square scheme is like the rectangle color scheme, but the four colors are evenly spaced on the color wheel.



24.1718, 3.2215, 8.6107



24.1718, -9.9258, 5.1039



24.1718, -5.4950, -9.3399



24.1718, 8.7569, -3.2061

Rectangle

The Rectangle color scheme consists of four colors that form a rectangle on the color wheel.



24.1712, 3.2225, 8.6104



24.1718, -5.4816, 8.6149



24.1718, -5.4950, -9.3399



24.1718, 3.2060, -9.3490

Sweetspot

The Sweet Spot groups the original color and five complimentary colors.



24.1718, 3.2215, 8.6107



37.5820, -0.4712, 5.5032



20.8562, 13.6392, -2.4566



18.4401, -0.1491, 2.8611



69.0652, -3.6851, 3.7524



19.9203, -1.0629, 1.0823

Same Dimension

The Same Dimension uses a secret algorithm to generate beautiful new colors.



24.1718, 3.2215, 8.6107



30.1352, 6.3129, 12.8823



29.1827, -5.1877, 12.6399



15.0043, -0.4513, 1.6478



22.9398, 15.4181, 14.4053



52.7412, 40.5092, 33.2081

Inverse Universe

The Inverse Universe completely reimagines the original color for something new.



23.2094, -3.1354, -8.2440



28.5746, -3.8758, -14.3886



18.3485, 5.4746, -17.0467



14.9072, -1.1028, -0.0581



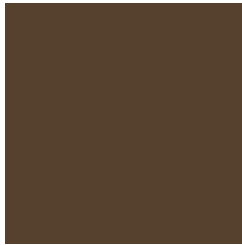
20.4481, 1.0358, -27.7942



46.5620, 5.8850, -70.9025

Previews

White Background



This preview shows how the HunterLab color 24.1712, 3.2225, 8.6104 looks on a white background.

Color Contrast Check

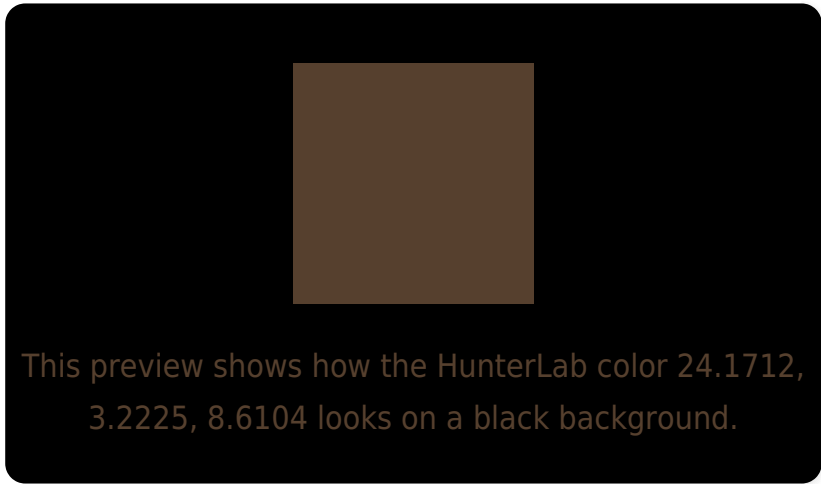
Large Text (above 18pt) WCAG AA ✓ Pass

Any Text WCAG AA ✓ Pass

Large Text (above 18pt) WCAG AAA ✓ Pass

Any Text WCAG AAA ✓ Pass

Black Background



Color Contrast Check

Large Text (above 18pt) WCAG AA × Fail

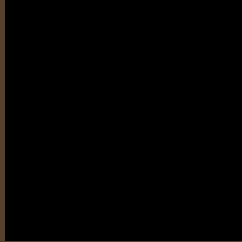
Any Text WCAG AA × Fail

Large Text (above 18pt) WCAG AAA × Fail

Any Text WCAG AAA × Fail

If you want to check with other color combinations, try the [Color Contrast Checker](#).

HunterLab 24.1712, 3.2225, 8.6104 Background



This preview shows how black text looks on a background with the HunterLab color 24.1712, 3.2225, 8.6104.



This preview shows how white text looks on a background with the HunterLab color 24.1712, 3.2225,

8.6104.

Color Blindness Simulation

Color vision deficiency is a very complex topic, and I could not describe the different causes any better than Wikipedia does, so if you want to learn more, you should check out their [article about color blindness](#).

Dichromacy



Original Color

24.1712, 3.2225, 8.6104

Protanopia

24.3423, -2.3732, 8.1472

Deuteranopia

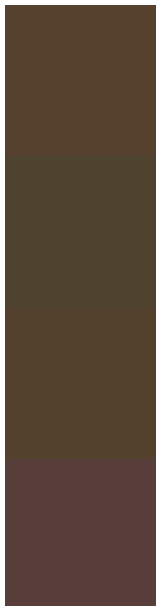
24.2642, 1.0957, 8.6548



Tritanopia

24.0947, 7.2965, 2.2917

Trichromacy



Original Color

24.1712, 3.2225, 8.6104

Protanomaly

24.1645, -0.4626, 8.2835

Deuteranomaly

24.1181, 1.8349, 8.5394

Tritanomaly

24.0567, 5.7041, 4.7258

Monochromacy



Original Color

24.1712, 3.2225, 8.6104

Achromatopsia

24.3949, -1.3017, 1.3254

Achromatomaly

24.1808, 0.1378, 4.0774

CSS Examples

Text

The CSS property to change the color of the text to HunterLab 24.1712, 3.2225, 8.6104 is called "color". The color property can be set on classes, ids or directly on the HTML element.

This example shows how text in the color `rgb(86, 64, 46)` looks like.

```
.text, #text, p{  
    color:rgb(86, 64, 46)  
}
```

If you want to add a text shadow in that color use the text-shadow property, you can generate a text shadow directly with our [CSS Text Shadow Generator](#).

Here you see how black text with a 4 pixel rgb(86, 64, 46) colored shadow looks like.

```
.shadow{ text-shadow: 4px 4px 2px rgb(86, 64, 46) }
```

Border

The CSS property to change the border of an element to HunterLab 24.1712, 3.2225, 8.6104 is called "border". The border property can be set on classes, ids or directly on the HTML element.

This example shows the color as border, it can be applied via the CSS property "border" or "border-color".

```
.border, #border, table{ border:4px solid rgb(86, 64, 46) }
```


If only the border color should be changed use the property `border-color`.

```
.border{ border-color:rgb(86, 64, 46) }
```

If you want to add a box shadow in that color use:

Here you see how a box with a 4 pixel `rgb(86, 64, 46)` colored shadow looks like.

```
.boxshadow{ -moz-box-shadow:4px 4px 4px  
4px rgb(86, 64, 46); -webkit-box-  
shadow:4px 4px 4px 4px rgb(86, 64, 46);  
box-shadow:4px 4px 4px 4px rgb(86, 64, 46)  
}
```

Background

The CSS property to change the background color of an element to HunterLab 24.1712, 3.2225, 8.6104 is called "background". The background property can be set on classes, ids or directly on the HTML element.

```
.background, #background, body{  
background: rgb(86, 64, 46) }
```

If only the background color should be changed can be used:

```
.background{ background-color: rgb(86, 64,  
46) }
```

This example shows the color as background, it is applied via the CSS property "background".

To optimize and compress your CSS code, you can use our [online CSS compressor and optimizer](#) based on csstidy. If you want to create a linear or radial gradient as background or border, check our [CSS Gradient Generator](#).

Hey! You found this booklet interesting? Support Converting Colors with the new Membership Option!

The pro membership hides all ads, plus gives you double the colors in the color bucket, and more awesome pro features!

[Learn more, Memberships starting at \\$2.50/m!](#)

**Follow me
on Twitter!**

@ConvertingColor