

Converting Colors

HunterLab(24.2247, 2.0839,
3.6504)

Have a look what the booklet for
HunterLab(24.2247, 2.0839, 3.6504)
contains.

HunterLab(24.3033, 1.8471, 3.8897)	3
<i>Conversions</i>	4
<i>Details</i>	6
<i>Harmonies</i>	12
<i>Previews</i>	24
<i>Color Blindness Simulation</i>	28
<i>CSS Examples</i>	31

Color

**HunterLab(24.3033, 1.8471,
3.8897)**

Conversions

Conversions Part 1

Format	Color
Hex	4F423E
RGB	79, 66, 62
RGB Percent	31%, 26%, 24%
CMY	0.6902, 0.7412, 0.7569
CMYK	0.00, 0.16, 0.22, 0.69
HSL	14°, 12%, 28%
HSV	14°, 22%, 31%
XYZ	6.0422, 5.9065, 5.3790
YIQ	69.4310, 9.0320, 1.5120

Conversions

Conversions Part 2

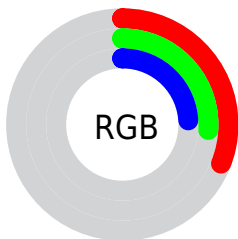
Format	Color
R_YB	79, 67, 62
Decimal	5194302
CIE Lab	29.18, 4.83, 4.50
CIE LCh	29, 6.603, 43.002
Yxy	5.9068, 0.3487, 0.3409
Android (android.graphics.Color)	4283384382 (0xFF4F423E)
YUV	69.4310, -3.6635, 8.3920
Hunter-Lab	24.3033, 1.8471, 3.8897

Details

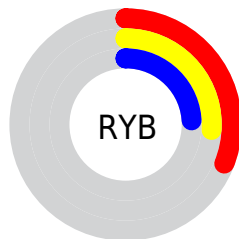
The HunterLab color **24.3033, 1.8471, 3.8897** is a dark color, and the websafe version is hex **333333**. A complement of this color would be **25.7306, -4.0021, -1.2601**, and the grayscale version is **24.5577, -1.3103, 1.3343**.

A 20% lighter version of the original color is **42.1046, 1.2692, 5.5936**, and **10.0169, 1.9360, 2.2889** is the 20% darker color. If you saturate the color by 10%, you get **22.7096, 3.5402, 4.9115**, and if you desaturate by 10%, it is **25.9682, 0.2455, 2.8138**.

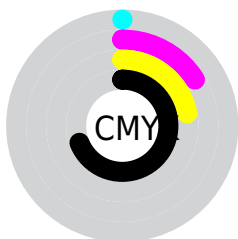
Distribution



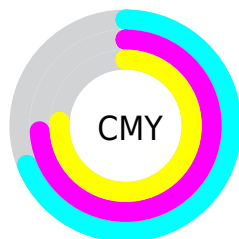
- Red (31%)
- Green (26%)
- Blue (24%)



- Red (31%)
- Yellow (26%)
- Blue (24%)



- Cyan (0%)
- Magenta (16%)
- Yellow (22%)
- Black (69%)



- Cyan (69%)
- Magenta (74%)
- Yellow (76%)

Brightness & Saturation Gradients

These gradients show how the HunterLab color 24.3033, 1.8471, 3.8897 changes by changing the brightness by 10 percent. The first figure shows a shift by +10% for each color and the second figure -10%.

Similar to the brightness gradients but the following saturation gradients show a change of the HunterLab color 24.3033, 1.8471, 3.8897 by changing the saturation by 10% instead.

■ 24.3033, 1.8471,
3.8897

■ 24.3033, 1.8471,
3.8897

■ 125.7948, -1.3682,
11.4646

■ 16.6987, 1.9022,
3.1365

■ 42.1158, 1.4990,
5.4321

■ 10.1110, 1.8535,
2.4380

■ 52.1713, 1.2300,
6.2299

0.0000, INF, NaN

0.0000, NaN, NaN

■ 62.9201, 0.9073,
7.0484

0.0000, NaN, NaN

■ 74.3198, 0.5358,
7.8882

0.0000, NaN, NaN

■ 86.3353, 0.1195,
8.7497

0.0000, NaN, NaN

0.0000, NaN, NaN

■ 98.9364, -0.3383,

9.6330

0.0000, NaN, NaN

112.0972, -0.8349,
10.5380

■ 24.3033, 1.8471,
3.8897

■ 24.3033, 1.8471,
3.8897

■ 22.7096, 3.5402,
4.9115

■ 25.9682, 0.2455,
2.8138

■ 21.1947, 5.3314,
5.8647

■ 27.6949, -1.2690,
1.6929

■ 19.7695, 7.2194,
6.7323

■ 29.4774, -2.7052,
0.5351

■ 18.4465, 9.1957,
7.4929

■ 31.3102, -4.0710,
-0.6536

■ 17.2390, 11.2391,
8.1209

■ 33.1885, -5.3741,
-1.8687

■ 16.1619, 13.3113,
8.5883

■ 35.1084, -6.6217,
-3.1069

■ 15.2273, 15.3424,
8.9025

■ 37.0663, -7.8203,
-4.3655

■ 14.5412, 16.9102,
9.2563

■ 39.0593, -8.9756,
-5.6425

■ 41.0849, -10.0928,
-6.9362

Harmonies

Analogous

The Analogous color harmony consists of three colors that are next to each other on the color wheel.



24.3038, 2.9256, 2.2037



24.3033, 1.8471, 3.8897



24.3038, -0.0596, 4.8379

Triad

The Triadic color harmony groups three colors that are evenly spaced from another and form a triangle on the color wheel.



24.3038, 1.8463, 3.8901



24.3038, -5.1809, 2.4608



24.3038, -0.3471, -2.8951

Complementary

The Complementary color scheme is a pair of colors which are on the opposite of each other on the color wheel.



24.3033, 1.8471, 3.8897



25.7306, -4.0021, -1.2601

Split Complementary

Split-complementary colors differ from the complementary color scheme. The scheme consists of three colors, the original color and two neighbors of the complement color.



24.3038, -2.5122, -2.8108



24.3033, 1.8471, 3.8897



24.3038, -5.2517, 0.4079

Square

The Square scheme is like the rectangle color scheme, but the four colors are evenly spaced on the color wheel.



24.3038, 1.8463, 3.8901



24.3038, -4.0933, 4.0640



24.3038, -4.2903, -1.5589



24.3038, 1.6295, -1.7800

Rectangle

The Rectangle color scheme consists of four colors that form a rectangle on the color wheel.



24.3033, 1.8471, 3.8897



24.3038, -1.5174, 4.9799



24.3038, -4.2903, -1.5589



24.3038, -1.0780, -3.0088

Sweetspot

The Sweet Spot groups the original color and five complimentary colors.



24.3038, 1.8463, 3.8901



35.0369, -0.7412, 2.8990



23.6982, 5.3657, -1.9725



17.4603, -0.3450, 1.4656



66.9319, -3.5713, 3.6365



18.1947, -0.9708, 0.9886

Same Dimension

The Same Dimension uses a secret algorithm to generate beautiful new colors.



24.3038, 1.8463, 3.8901



30.5487, 3.5828, 5.7995



26.4012, -1.7545, 6.0027



13.2518, -0.1015, 1.2482



18.6507, 22.9321, 11.8939



44.0237, 59.9773, 28.1772

Inverse Universe

The Inverse Universe completely reimagines the original color for something new.



25.7306, -4.0021, -1.2601



32.8575, -5.9001, -2.5394



23.5537, -0.4661, -4.1149



13.5422, -1.2886, 0.2008



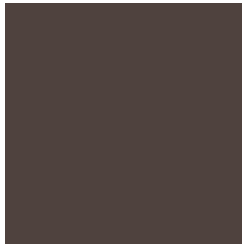
25.3113, -8.1740, -13.9916



60.4409, -18.2484, -36.1528

Previews

White Background



This preview shows how the HunterLab color 24.3033, 1.8471, 3.8897 looks on a white background.

Color Contrast Check

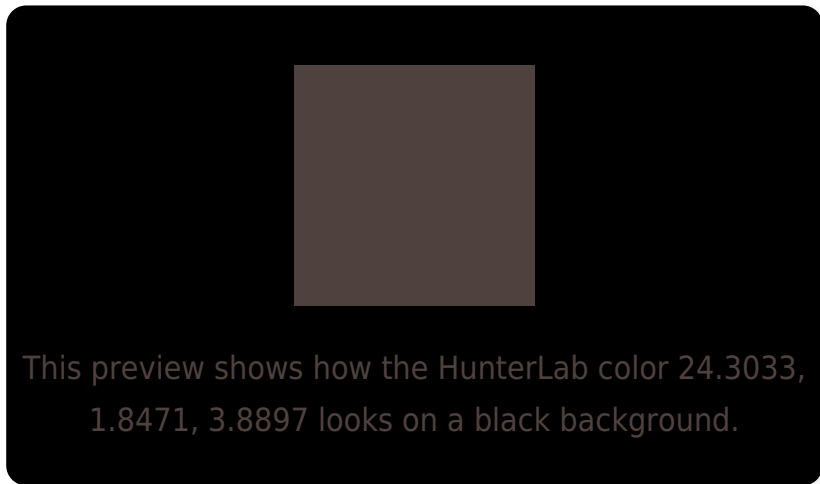
Large Text (above 18pt) WCAG AA ✓ Pass

Any Text WCAG AA ✓ Pass

Large Text (above 18pt) WCAG AAA ✓ Pass

Any Text WCAG AAA ✓ Pass

Black Background



Color Contrast Check

Large Text (above 18pt) WCAG AA × Fail

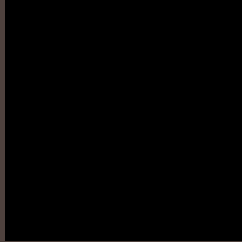
Any Text WCAG AA × Fail

Large Text (above 18pt) WCAG AAA × Fail

Any Text WCAG AAA × Fail

If you want to check with other color combinations, try the [Color Contrast Checker](#).

HunterLab 24.3033, 1.8471, 3.8897 Background



This preview shows how black text looks on a background with the HunterLab color 24.3033, 1.8471, 3.8897.

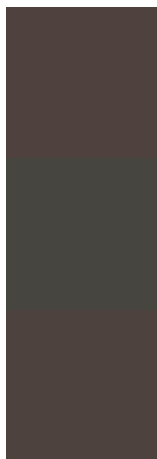


This preview shows how white text looks on a background with the HunterLab color 24.3033, 1.8471,

Color Blindness Simulation

Color vision deficiency is a very complex topic, and I could not describe the different causes any better than Wikipedia does, so if you want to learn more, you should check out their [article about color blindness](#).

Dichromacy



Original Color

24.3033, 1.8471, 3.8897

Protanopia

24.4023, -1.5661, 3.5832

Deuteranopia

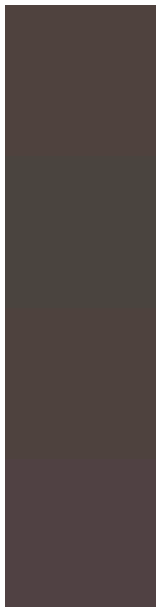
24.2156, 1.5528, 3.7902



Tritanopia

24.3480, 3.6072, 0.9564

Trichromacy



Original Color

24.3033, 1.8471, 3.8897

Protanomaly

24.3905, -0.3217, 3.5922

Deuteranomaly

24.2156, 1.5528, 3.7902

Tritanomaly

24.2720, 3.2055, 2.0411

Monochromacy



Original Color

24.3033, 1.8471, 3.8897

Achromatopsia

24.3949, -1.3017, 1.3254

Achromatomaly

24.3804, -0.2150, 2.4849

CSS Examples

Text

The CSS property to change the color of the text to HunterLab 24.3033, 1.8471, 3.8897 is called "color". The color property can be set on classes, ids or directly on the HTML element.

This example shows how text in the color `rgb(79, 66, 62)` looks like.

```
.text, #text, p{  
    color:rgb(79, 66, 62)  
}
```

If you want to add a text shadow in that color use the text-shadow property, you can generate a text shadow directly with our [CSS Text Shadow Generator](#).

Here you see how black text with a 4 pixel rgb(79, 66, 62) colored shadow looks like.

```
.shadow{ text-shadow: 4px 4px 2px rgb(79, 66, 62) }
```

Border

The CSS property to change the border of an element to HunterLab 24.3033, 1.8471, 3.8897 is called "border". The border property can be set on classes, ids or directly on the HTML element.

This example shows the color as border, it can be applied via the CSS property "border" or "border-color".

```
.border, #border, table{ border:4px solid rgb(79, 66, 62) }
```


If only the border color should be changed use the property `border-color`.

```
.border{ border-color:rgb(79, 66, 62) }
```

If you want to add a box shadow in that color use:

Here you see how a box with a 4 pixel `rgb(79, 66, 62)` colored shadow looks like.

```
.boxshadow{ -moz-box-shadow:4px 4px 4px  
4px rgb(79, 66, 62); -webkit-box-  
shadow:4px 4px 4px 4px rgb(79, 66, 62);  
box-shadow:4px 4px 4px 4px rgb(79, 66, 62)  
}
```

Background

The CSS property to change the background color of an element to HunterLab 24.3033, 1.8471, 3.8897 is called "background". The background property can be set on classes, ids or directly on the HTML element.

```
.background, #background, body{  
background: rgb(79, 66, 62) }
```

If only the background color should be changed can be used:

```
.background{ background-color: rgb(79, 66,  
62) }
```

This example shows the color as background, it is applied via the CSS property "background".

To optimize and compress your CSS code, you can use our [online CSS compressor and optimizer](#) based on csstidy. If you want to create a linear or radial gradient as background or border, check our [CSS Gradient Generator](#).

Hey! You found this booklet interesting? Support Converting Colors with the new Membership Option!

The pro membership hides all ads, plus gives you double the colors in the color bucket, and more awesome pro features!

[Learn more, Memberships starting at \\$2.50/m!](#)

**Follow me
on Twitter!**

@ConvertingColor